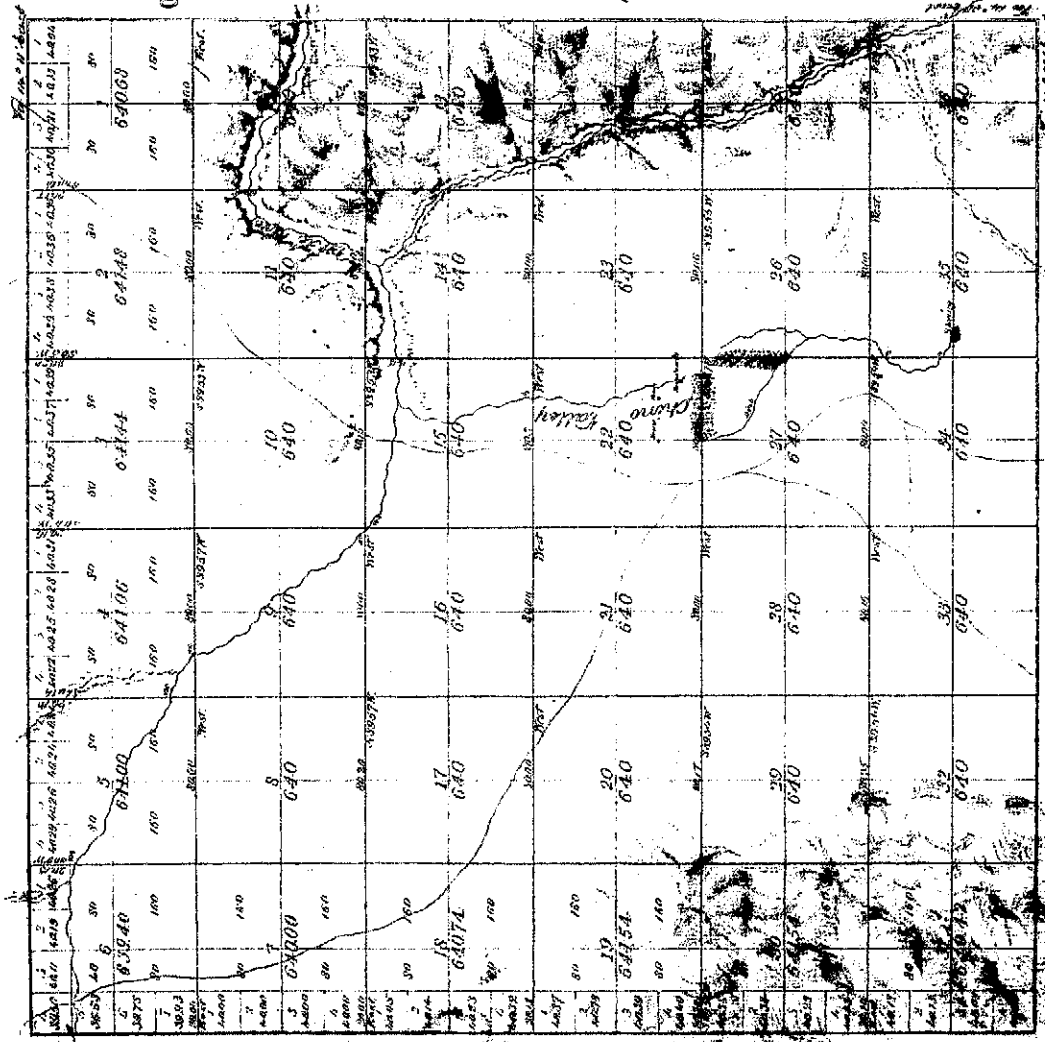


OFFICIALLY FILED 3-18-1892

Total number of Acres 20000.00

TOWNSHIP N^o 17 NORTH RANGE N^o 2 WEST
GILA AND SALT RIVER MERIDIAN



Subdivision lines run in the direction of 11' 00' East.

The above map of Township N17 North Range N2 West of the Salt and Gila Rivers is hereby submitted to the public for survey, maps to be in this office and the same must be approved by the Surveyor General's Office
 Tucson Arizona February 1892
 J. H. Johnson
 Surveyor General

Surveyed	Section	Acres	Value
1	1	3600	36000.00
2	2	3600	36000.00
3	3	3600	36000.00
4	4	3600	36000.00
5	5	3600	36000.00
6	6	3600	36000.00
7	7	3600	36000.00
8	8	3600	36000.00
9	9	3600	36000.00
10	10	3600	36000.00
11	11	3600	36000.00
12	12	3600	36000.00
13	13	3600	36000.00
14	14	3600	36000.00
15	15	3600	36000.00
16	16	3600	36000.00
17	17	3600	36000.00
18	18	3600	36000.00
19	19	3600	36000.00
20	20	3600	36000.00
21	21	3600	36000.00
22	22	3600	36000.00
23	23	3600	36000.00
24	24	3600	36000.00
25	25	3600	36000.00
26	26	3600	36000.00
27	27	3600	36000.00
28	28	3600	36000.00
29	29	3600	36000.00
30	30	3600	36000.00
31	31	3600	36000.00
32	32	3600	36000.00
33	33	3600	36000.00
34	34	3600	36000.00
35	35	3600	36000.00
36	36	3600	36000.00

X078