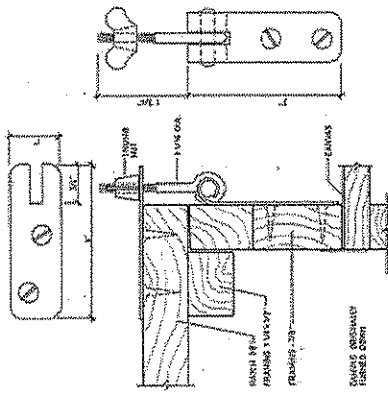
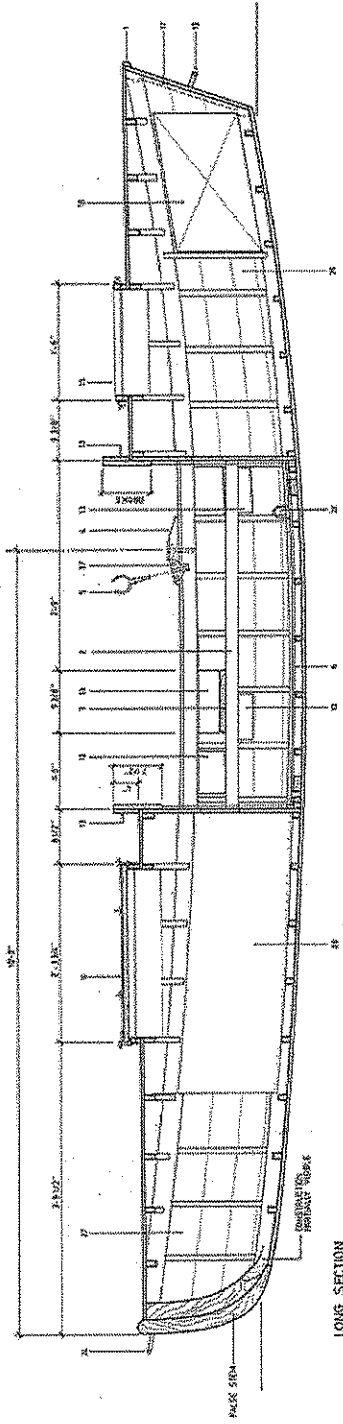


30

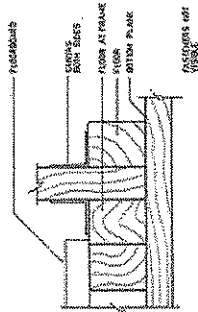
EDITH

"EDITH"
GALLOWAY TYPE CATARACT BOAT
BUILT BY RACINE BOAT BUILDING CO., c.1910

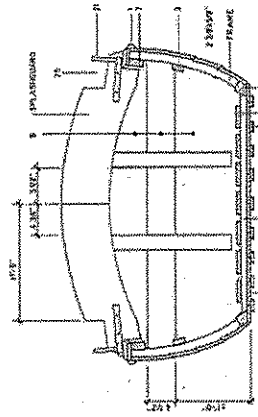
PLANS III
ONE-EIGHTEENTH SCALE
SCALE 1/8" = 1'-0"



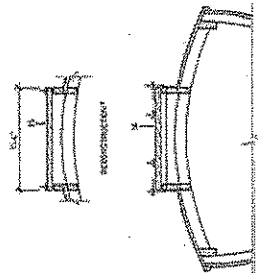
HATCH DETAILS
1/8" = 1'-0"



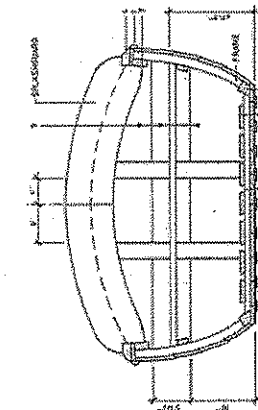
BOTTOM OF BULKHEAD
1/8" = 1'-0"



MID-SHIPS SECTION LOOKING AFT



SECTION AT HATCH
AS MEASURED



MID-SHIPS SECTION LOOKING FORWARD

Boat Name: EDITH
Catalog No.: _____
Acq. No.: GRCA -

LOA ~~16-4-2~~
16-7-3

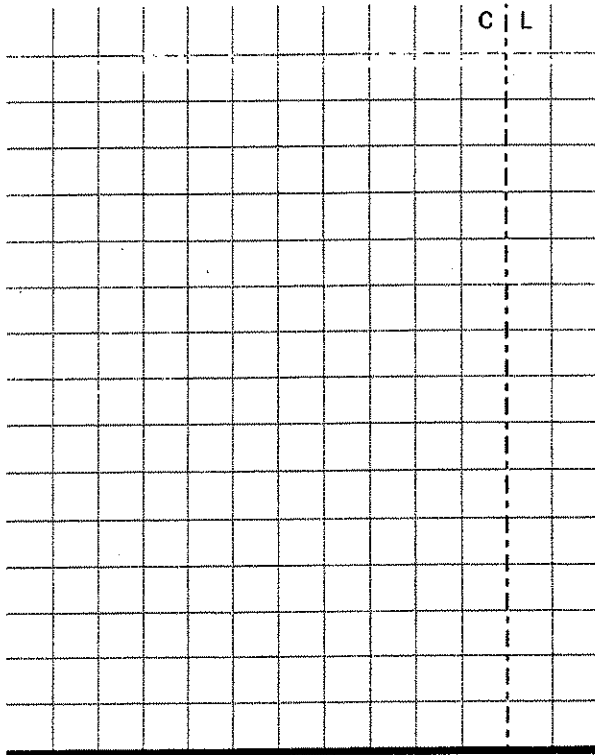
Station No.: _____
STATIONS IN FEET
FROM THE BOW (HALF
ROUND)

Station Notes:

- SEE OVER
- DAMAGE TO BOTH SIDES OF HULL @ COCKPIT MAY BE CAUSING HOG
- DAMAGE TO DECK HAS CAUSED SAG

1
2
3
5
7
9
11
13
14
15
16

Point	Vert.	Horz.
Rabbit		
Keel		0-0



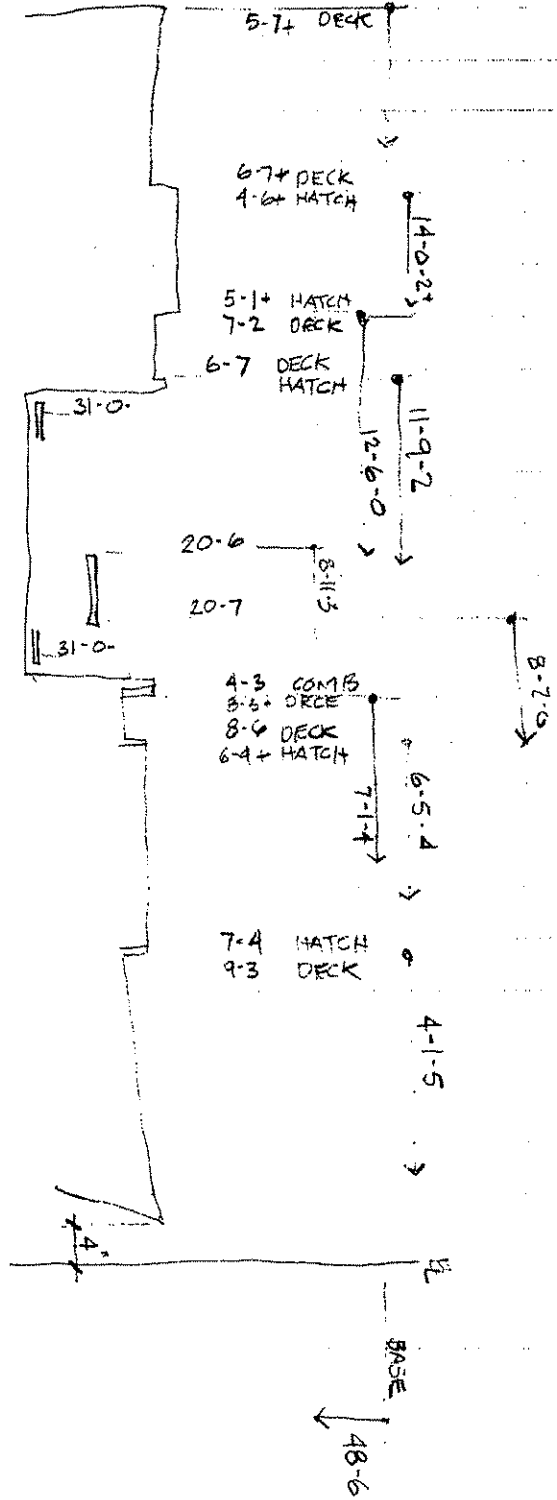
Measurement Notes:

- STEM HALF RD = $\frac{1}{4}$ "
- "TO. SHR" IS TOP OF DECK, DECK PLANK = $\frac{3}{8}$ " (MEASURED AT DAMAGE)
- DECK AT COCKPIT SIDES = $\frac{1}{2}$ "
- MEASURE JIG WAS TILTED - 1" OUT AT 48" FROM FLR. & $\frac{7}{16}$ UP @ $25\frac{1}{2}$ "

* CORRECT DECK & SHR. NOS. BY $\frac{1}{8}$ (MEASURE STICK)

Measured by: TODD BLOCH, CAMERON STAVELEY Date: AUG. 9, 2003

EDITH



Grand Canyon National Park – Small Craft Collection
Documentation Project – August 8 – 13, 2003

Boat Name: EDITH

Catalog No.: _____

Acq. No.: GRCA -

Station No.: 1

Station Notes:

BASE OFFSET = 25"

Point	Vert.	Horz.									C	L
T.O. DECK	40-6											
T.O. SHR	39-3	20-0	5									
BTM SHR	31-0	20-0	5									
2	27-6	20-4+	20.5									
3	23-5+	21-4+	3.5									
CHINE	20-0	23-3+	(OENT) 16.25									
Rabbit												
Keel		0-0										

Base

Measurement Notes:

Measured by: _____

Date: _____

Grand Canyon National Park – Small Craft Collection
 Documentation Project – August 8 – 13, 2003

Boat Name: EDITH

Catalog No.: _____

Acq. No.: GRCA-

Station No.: 3

Station Notes:

BASE OFFSET = 26"

Point	Vert.	Horz.		C	L
T.O. DECK	40-5	4			
T.O. SHR	36-3	11-6	14.25		
BTM SHR	28-7	11-7+	14.125		
2	24-6+	13-0	13		
3	20-7	14-5+	11.375		
CHINE	17-7	16-7	9.125		
Rabbit					
Keel		0-0			

Base

Measurement Notes:

Measured by: _____ Date: _____

Grand Canyon National Park – Small Craft Collection
Documentation Project – August 8 – 13, 2003

Boat Name: EDITH

Catalog No.: _____

Acq. No.: GRCA-

Station No.: 5

Station Notes:

BASE OFFSET = 26-2

Point	Vert.	Horz.						C	L
DECK AT HATCH	39-5+	18-0+	8.25						
T.O. SHR	3A-4	6-4	19.75						
BTM SHR	27-1+	6-7	19.375						
2	23-2	8-1+	18.125						
3	19-2+	10-1	16.125						
CHINE	16-1+	12-4	13.75						
Rabbit									
Keel		0-0							

Base

Measurement Notes:

Measured by: _____ Date: _____

Grand Canyon National Park – Small Craft Collection
Documentation Project – August 8 – 13, 2003

Boat Name: EDITH

Catalog No.: _____

Acq. No.: GRCA-

Station No.: 7

Station Notes:

BASE OFFSET = 26.2

Point	Vert.	Horz.											C	L
T.O. DECK/ RAIL	34-6+	6-4	19.75											
T.O. SHR	34-2-	4-0	22.25											
BTM. SHR	26-7+	4-0	22.25											
2	22-4+	5-2+	21											
3	18-4	7-1+	19.125											
CHINE	15-2	9-4+	16.75											
Rabbit														
Keel		0-0												

Base

Measurement Notes:

Measured by: _____ Date: _____

Grand Canyon National Park – Small Craft Collection
Documentation Project – August 8 – 13, 2003

Boat Name: EDITH

Catalog No.: _____

Acq. No.: GRCA-

Station No.: 9

Station Notes:

BASE OFFSET = 26-2

Point	Vert.	Horz.		C	L
T.O. DECK/ RAIL	34-5	5-2	21		
T.O. SHR	34-2+	2-6	23.5		
BTM. SHR	26-5+	2-7-	23.375		
2	22-4	3-7-	22.375		
3	18-3+	5-3+	20.875		
CHINE	15-0+	7-6+	18.5		
Rabbit					
Keel		0-0			

Base

Measurement Notes:

Measured by: _____ Date: _____

Grand Canyon National Park - Small Craft Collection
 Documentation Project - August 8 - 13, 2003

Boat Name: EDITH

Catalog No.: _____

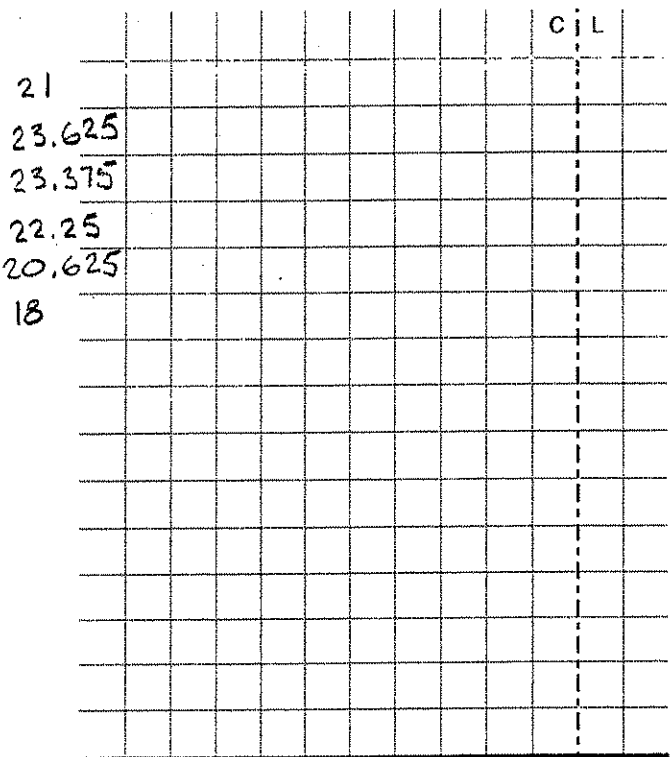
Acq. No.: GRCA- _____

Station No.: 11

Station Notes:

BASE OFFSET = 26.2

Point	Vert.	Horz.
T.O. DECK RAIL	34.7+	5.2+
T.O. SHR	34.4+	2.5+
BTM. SHR	27.2	2.7
2	23.1-	4.0
3	19.0	5.5+
CHINE	15.4	8.2+
Rabbit		
Keel		0-0



Measurement Notes:

Measured by: _____ Date: _____

Grand Canyon National Park – Small Craft Collection
 Documentation Project – August 8 – 13, 2003

Boat Name: EDITH

Catalog No.: _____

Acq. No.: GRCA -

Station No.: 13

Station Notes:

BASE OFFSET = 26-3

Point	Vert.	Horz.																C	L
DECK AT HATCH	41-7	18-6	7.625																
TOP SHR	36-0	4-3+	22																
BTM SHR	28-7	4-7	21.5																
2	24-6-	6-2	20.125																
3	20-7+	8-1	18.25																
CHINE	17-7-	10-4+	15.875																
Rabbit																			
Keel		0-0																	

Base

Measurement Notes:

Measured by: _____ Date: _____

Grand Canyon National Park – Small Craft Collection
 Documentation Project – August 8 – 13, 2003

Boat Name: EDITH

Catalog No.: _____

Acq. No.: GRCA-

Station No.: 14

Station Notes:

BASE OFFSET = 26-4

Point	Vert.	Horz.									C	L
T.O. DECK	42-7											
T.O. SHR	37-3	6-0+	20.5									
BTM. SHR	30-1+	6-5-	19.875									
2	25-7+	8-0+	18.5									
3	22-1+	10-0	16.5									
CHINE	19-0+	12-4"	14									
Rabbit												
Keel		0-0										

Measurement Notes:

STEM HALF RD = 1/4"

"T.O. SHR" IS TOP OF DECK, DECK PLANKING =

Measured by: _____ Date: _____

Grand Canyon National Park - Small Craft Collection
 Documentation Project - August 8 - 13, 2003

Boat Name: EDITH

Catalog No.: _____

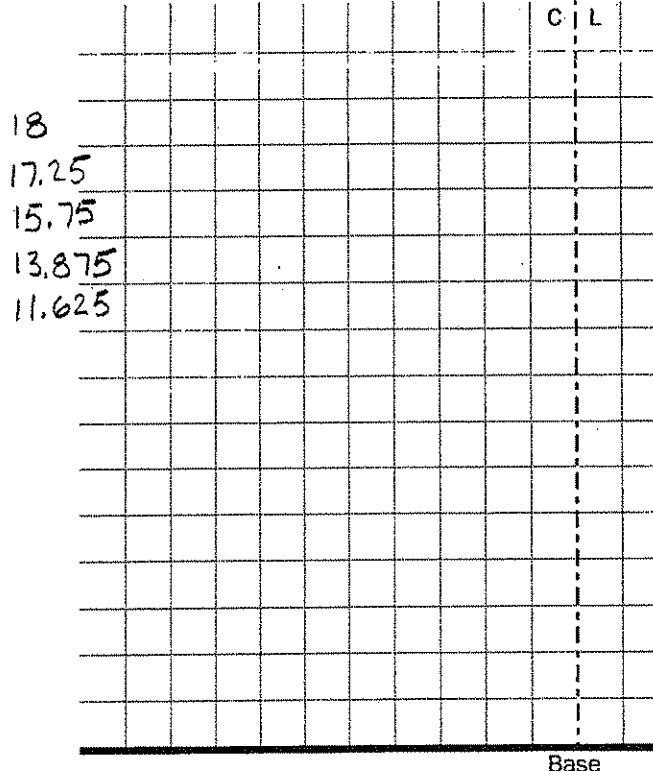
Acq. No.: GRCA-

Station No.: 15
 AFT 2 1/8"

Station Notes:

BASE OFFSET = 27.3

Point	Vert.	Horz.
T.O. DECK	47-6-	0
T.O. SHR	39-6	9-3
BTM SHR	32-4+	10-1-
2	28-1-	11-5+
3	24-2+	13-4+
CHINE	21-2+	15-6
Rabbit		
Keel		0-0



Base

Measurement Notes:

Measured by: _____ Date: _____

Grand Canyon National Park – Small Craft Collection
Documentation Project – August 8 – 13, 2003

Boat Name: EDITH

Catalog No.: _____

Acq. No.: GRCA-

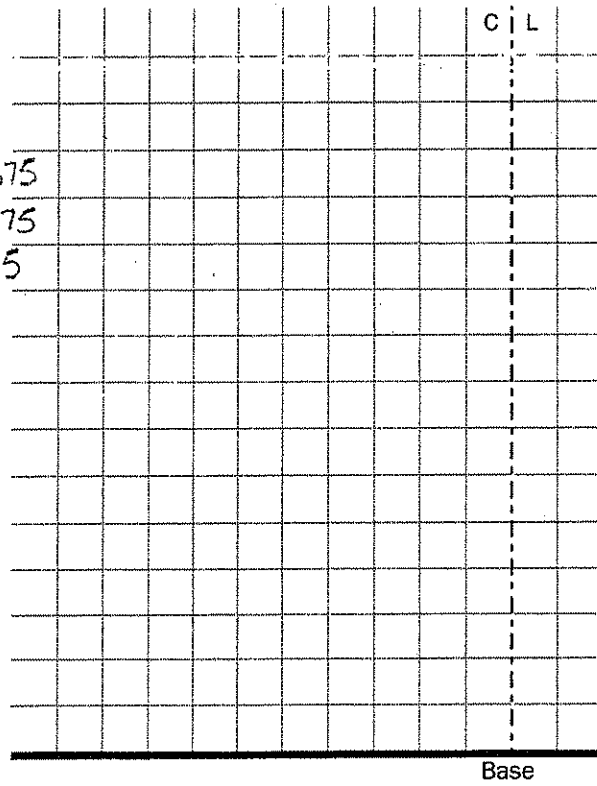
Station No.: 16

Station Notes:

BASE OFFSET = 24-1 +

Point	Vert.	Horz.
T.O. DECK	44-1	e
T.O. SHR	41-4-	8-1
BTM. SHR	34-3-	8-6+
2	29-5-	10-2-
3	25-6-	12-3-
CHINE	-	-
Rabbit		
Keel		0-0

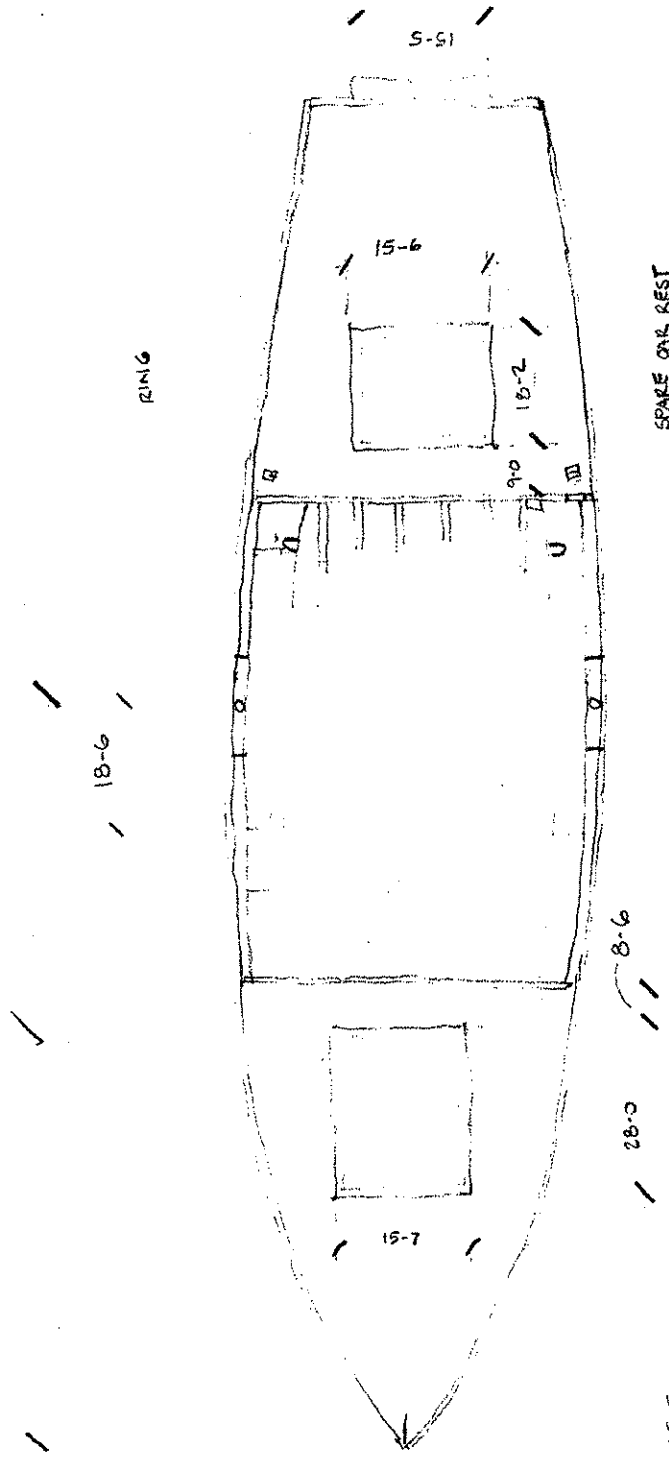
16
15.375
13.875
11.75



Measurement Notes:

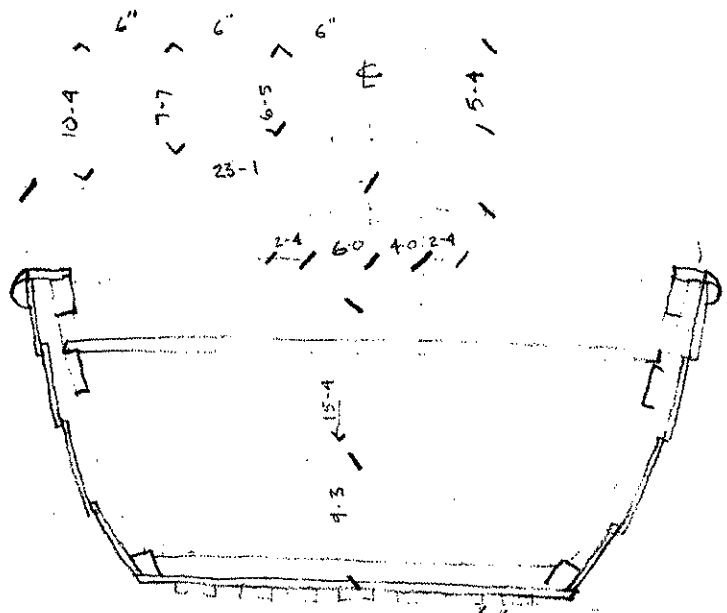
Measured by: _____ Date: _____

EDITH
 T. BLOCH
 8-12-03



- SCANTLINGS
- FRAMES $\frac{1}{8} \times \frac{7}{8}$
 - DECK BEAMS $\frac{1}{2} \times \frac{7}{8}$
 - DECK PLANKING $\frac{3}{8}$
 - COMINGS $\frac{5}{8}$
 - RUB RAIL $\frac{1}{8} \times \frac{1}{2}$
 - PLANKING $\frac{1}{2}$
 - RISER $\frac{1}{8} \times \frac{7}{8}$
 - SHEAR CLAMP $2\frac{1}{8} \times \frac{1}{8}$
 - SHELF $2\frac{1}{4} \times \frac{1}{2}$
 - STM PLANKING
 - THICKET $\frac{7}{8}$
 - FLOORS $\frac{1}{8} \times \frac{7}{8}$
 - CHINE LOG $2 \times \frac{1}{4}$

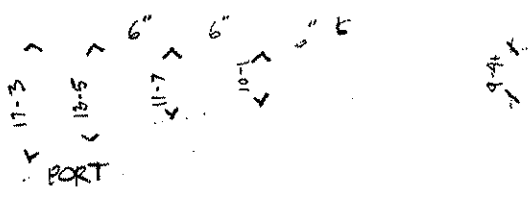
EDITH
 T. BLOCH
 8-12-03



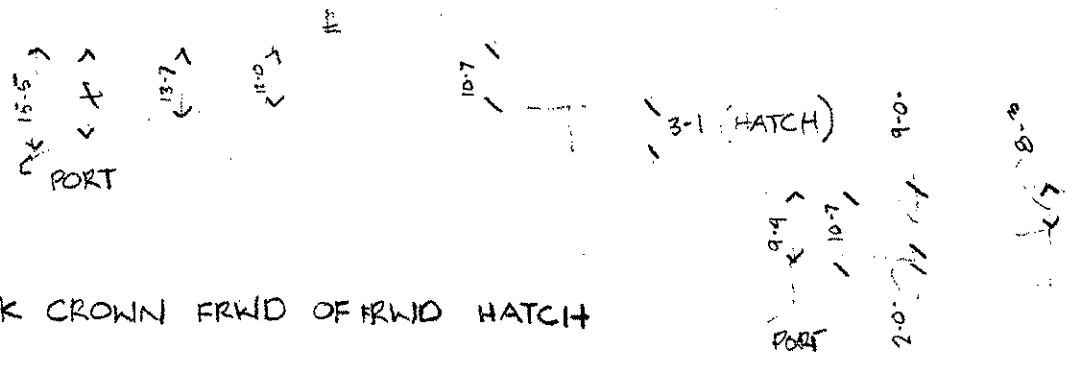
SECTION AFT OF THWAIRT - VIEW FRWD

$\frac{3}{4} \times \frac{1}{4}$

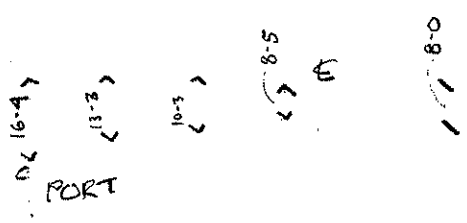
CENTERED OVER
 PLANK JTS.



DECK CROWN FRWD. OF FRWD SPLASH GUARD

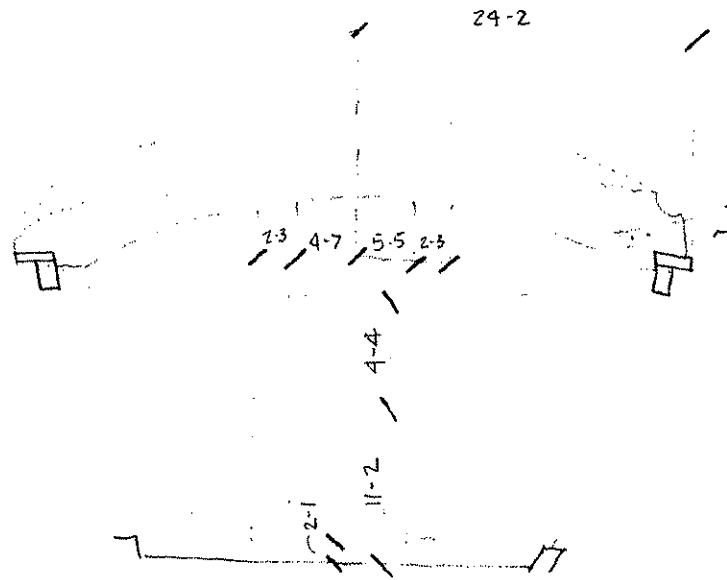


DECK CROWN FRWD OF FRWD HATCH

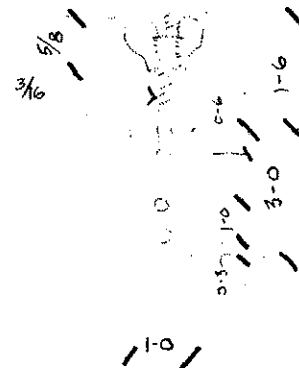
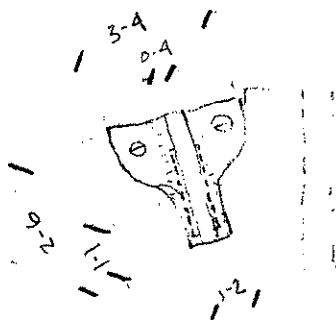
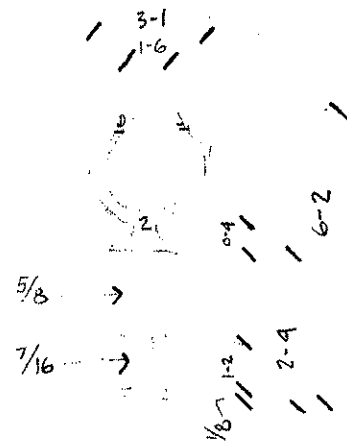
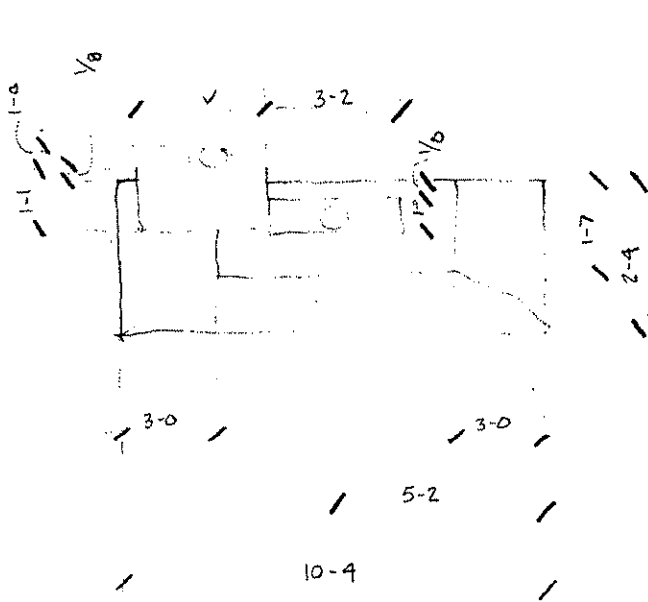


DECK CROWN AFT OF AFT SPLASH GUARD

EDITH
T. BLOCH
8-12-03

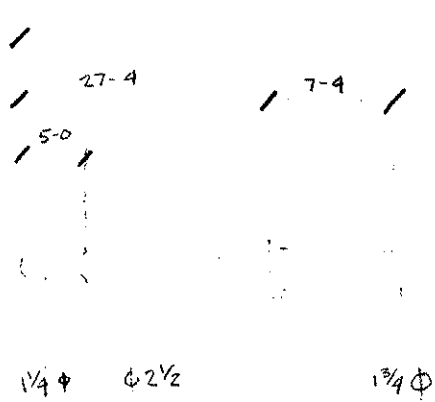
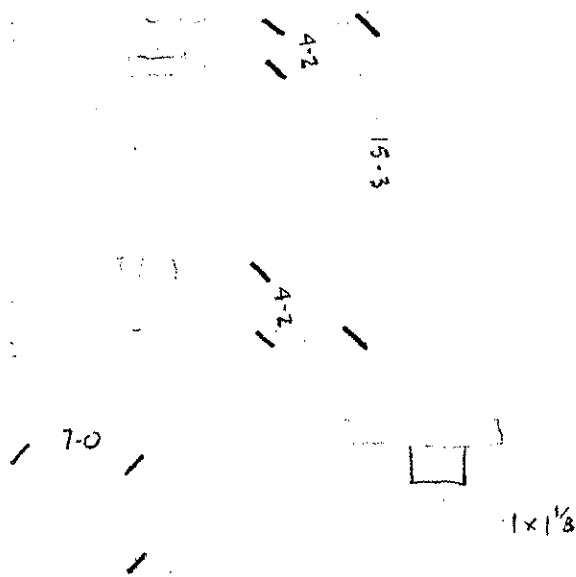
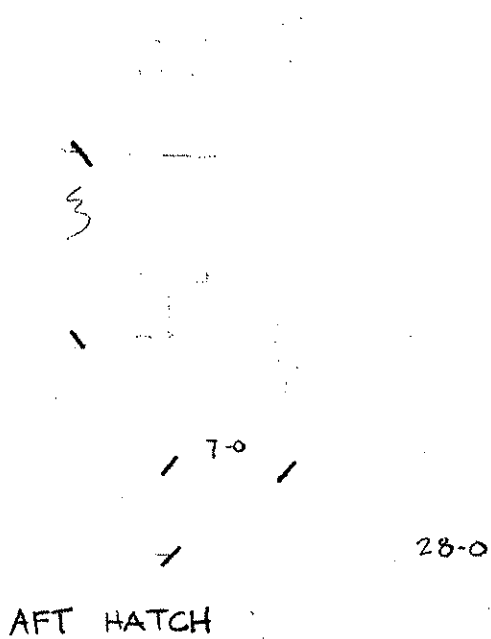


SECTION AFT OF THWART, VIEW AFT



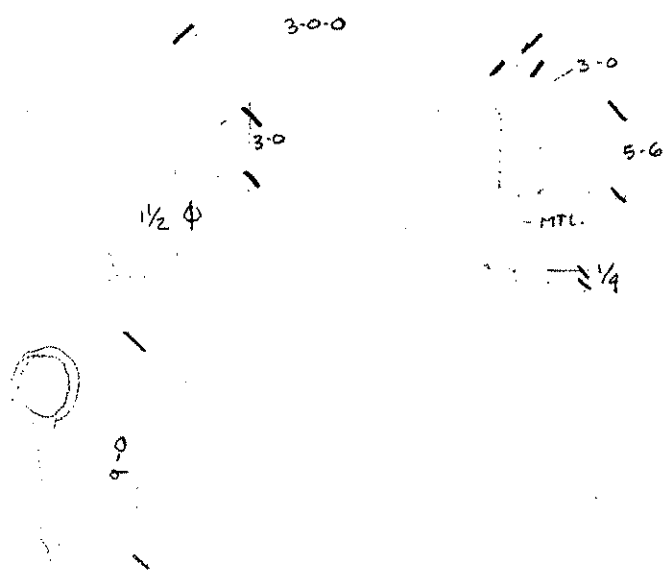
LATCH

EDITH
T. BLOCH
8-12-03



OAR (STONE)

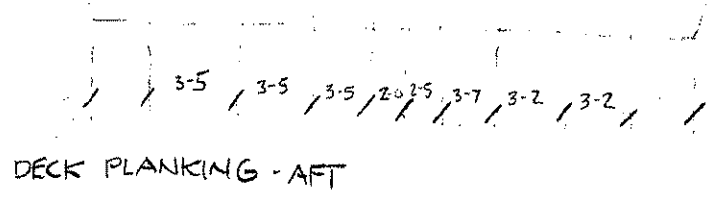
9-0-0



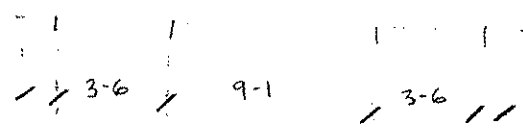
EDITH
T. BLOCH
8-12-03

3-2 5-4

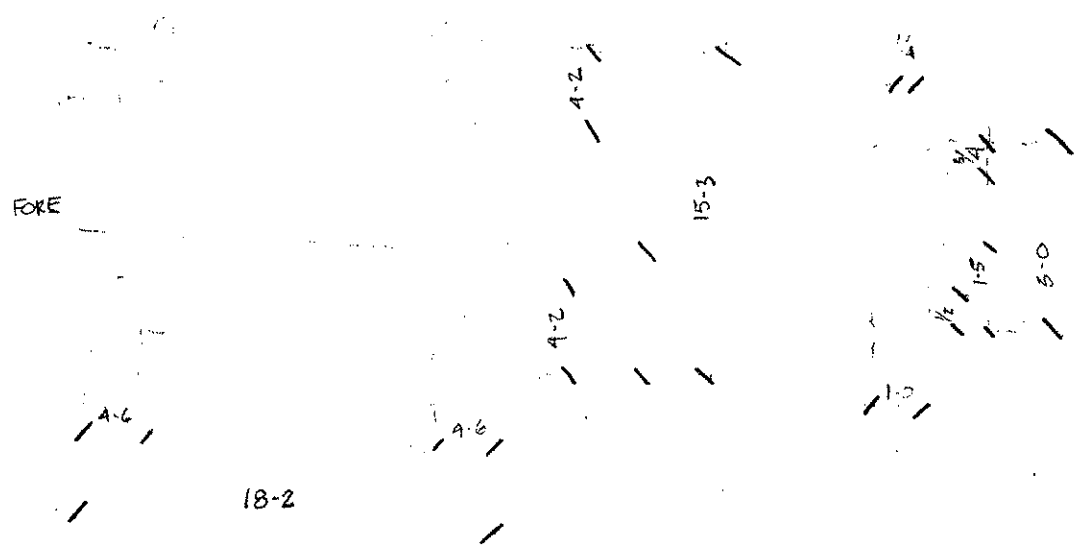
AT AFT COMING



DECK PLANKING - AFT



BOTTOM PLANKING



FORWARD HATCH COVER

EDITH
T. BLOCH
8-12-03

MEASURED ON CURVE

7.2 10.0

6.0
4.4
4.0
1.1-4
1.10-4
2.7-4
3-5-0
4.1-6
4-10-6
5.7-5
6.4-6

MEASURED ON CURVE

8-3-0
6-0
4-2
4-2
7-2-4
11-0-0

5-6
4-6
4-2

9.0 8.6 9.1 9.6 9.4
19.6

MEASURED ON CURVE

5.0

2.0

5.0

19.4

4.0

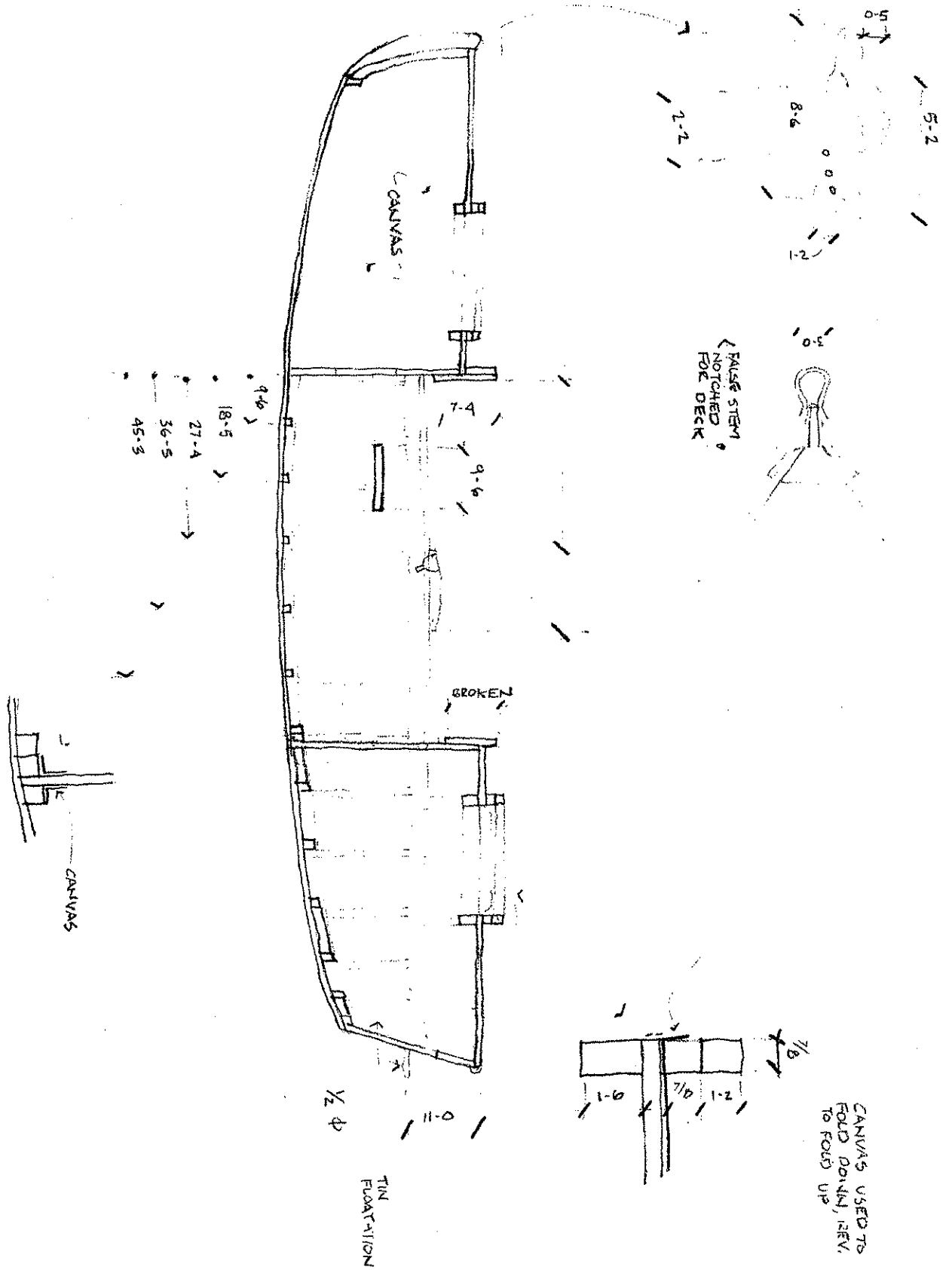
10.2

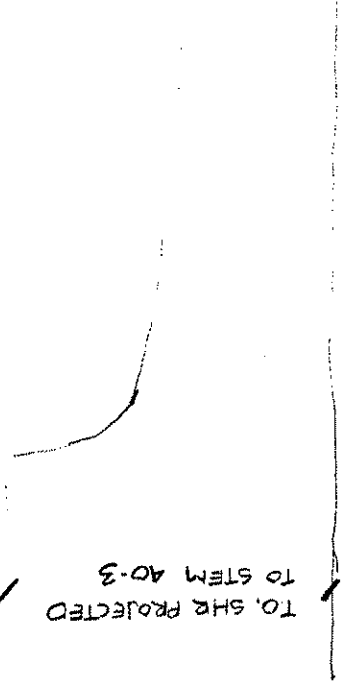
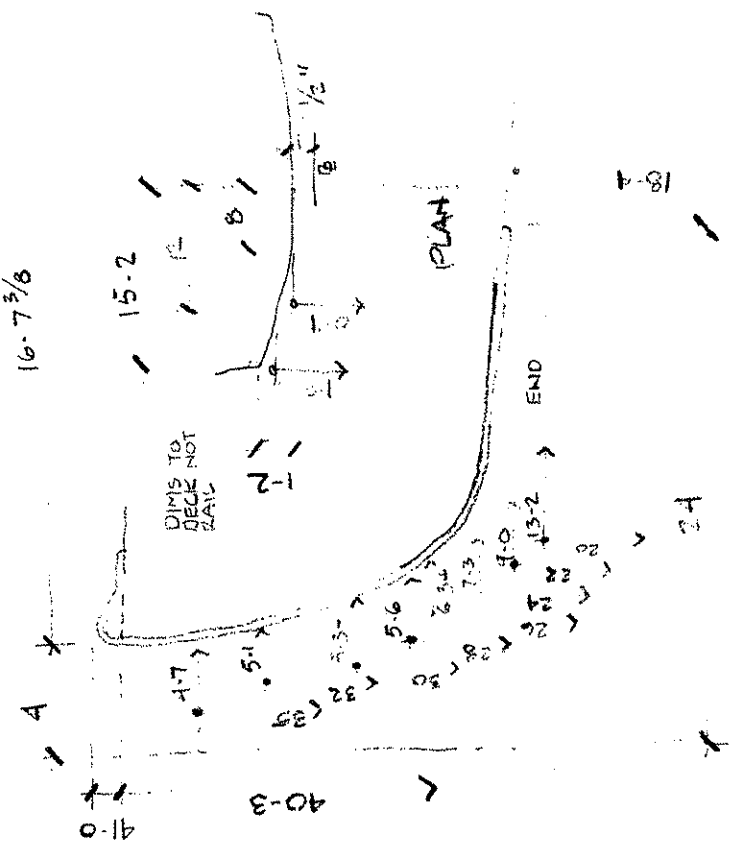
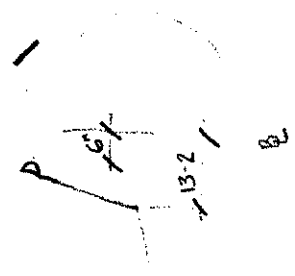
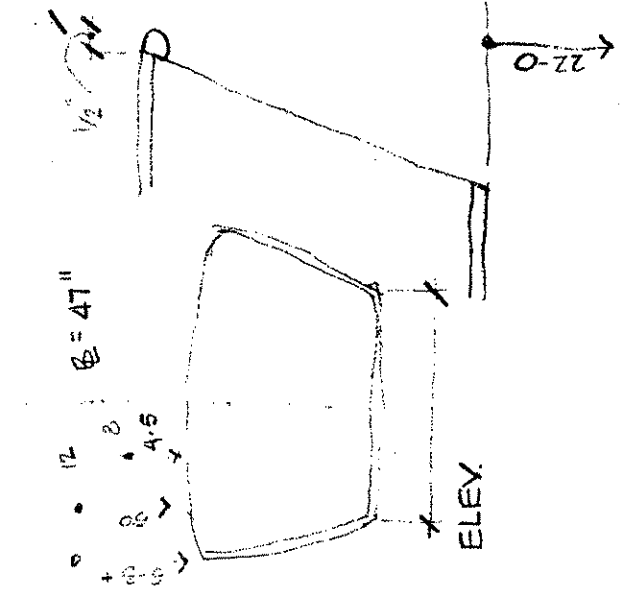
2.14

2.15

STARBOARD
REPAIR AREA

EDITH
T. BLOCH
8.12.03

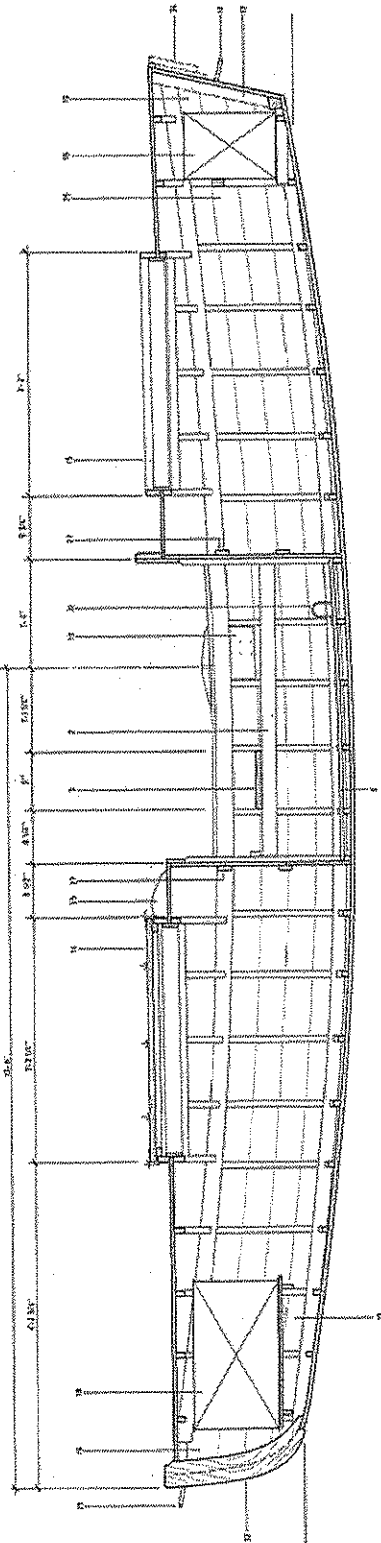




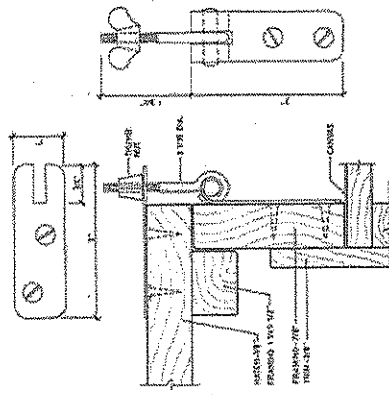
GLEN

"GLEN"
GALLOWAY TYPE CATARACT BOAT
BUILT BY FELLOWS & STEWART (architects), c. 1921

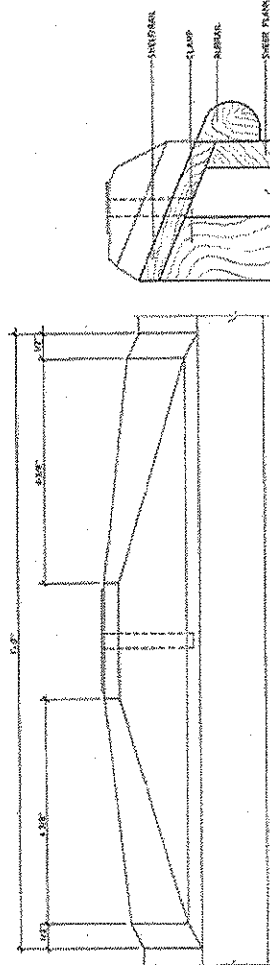
WELLSVILLE, OH
DRAWING NUMBER: BT200-66CP
SCALE: 1/8" = 1'-0"



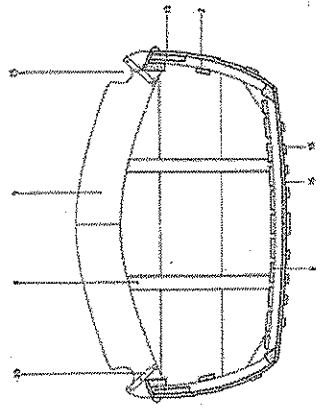
LONG SECTION



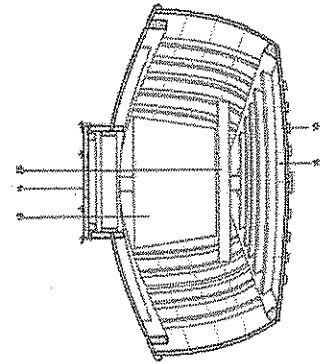
HATCH DETAILS



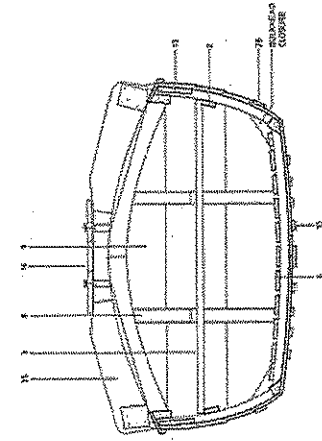
OARLOCK PAD DETAILS



MID-SHIP'S SECTION LOOKING AFT



SECTION AT HATCH



MID-SHIP'S SECTION LOOKING FORWARD

Grand Canyon National Park - Small Craft Collection
 Documentation Project - August 8 - 13, 2003

Boat Name: GLEN

18'-6 1/4"
 AFT TRANSOM TO STEM HALF ROUND

Catalog No.: _____

Acq. No.: GRCA -

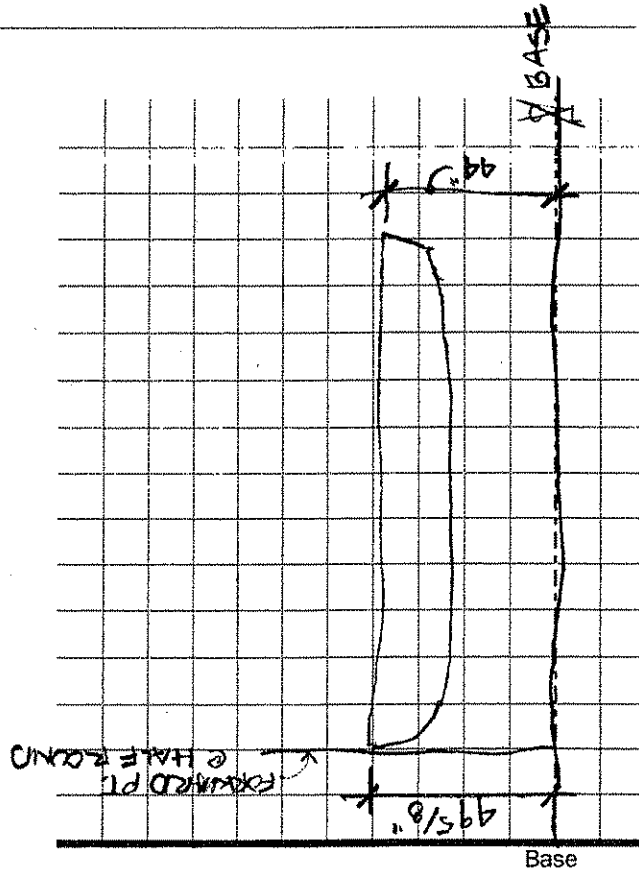
Station No.: _____ →

Station Notes:

• HORIZ. BASE = 36" FROM E

- 1
- 2
- 3
- 5
- 7
- 9
- 11
- 13
- 15
- 17
- 18

Point	Vert.	Horz.
Rabbit		
Keel		0-0

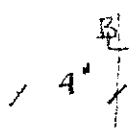


Measurement Notes:

- STEM HALF ROUND - 1/4"
- "T.O. SHEAR" IS TOP OF DECK
- KEEL MEASUREMENTS TO BTM OF RUNNER - SUBTRACT 3/8"
- MEASUREMENTS IN INCHES - 8THS, TO OUTSIDE OF PLANK
- BTM OF PLANKS DEFORMED OUT

Measured by: TODD BLOCH, CAMERON STAVELEY Date: AUG. 8 2003

GLEN



51-10 TO. OF STEM (HALF ROUND)

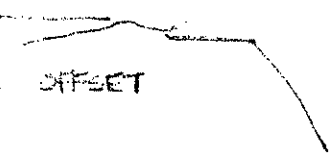
STEM

V	H
44-4	4-3
45	4-4+
42	4-5
41	4-6-
40	4-6+
38	5
36	5-4
34	6-2-
32	7-3+
30	9-4
28-5-	12-5

V = 28-7

H = 13-7

OFFSET



Grand Canyon National Park - Small Craft Collection
Documentation Project - August 8 - 13, 2003

Boat Name: GLENI

Catalog No.: _____

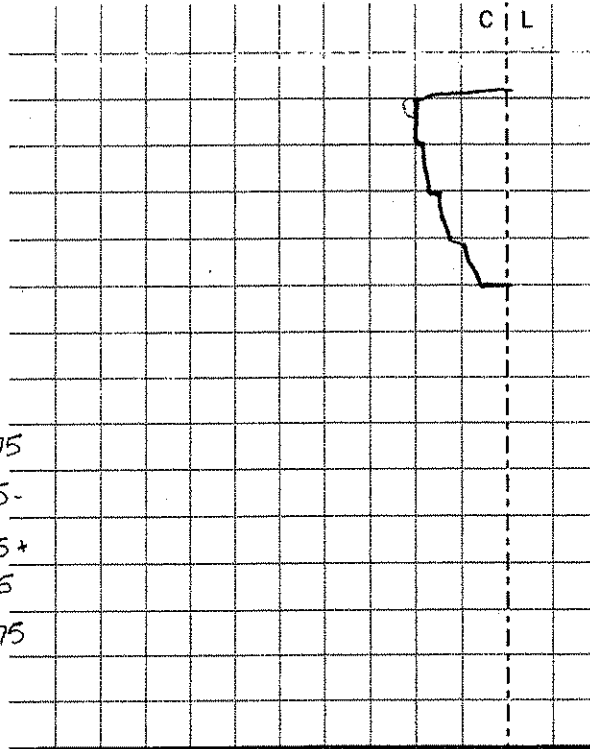
Acq. No.: GRCA -

Station No.: 1

Station Notes:

Ø 36"

Point	H Vert	V Horz
TO. SHEAR	31-0	47-2
BTM SHEAR	31-0	40-6
2	30-7	36-1+
3	32-0	32-0+
CHINE		
<hr/>		
TO. DECK @ 4	44-3	
TO SHEAR	7-2	47-4-
8. SHEAR	7-4-	40-7+
6	7-4+	36-3
3	8-6	31-3
CHINE Rabbit	11-1	27-5+
CHINE		0-0



4.
BASE @
13"

5.75
55-
5.5+
4.25
1.875

Base

Measurement Notes:

Measured by: _____ Date: _____

Grand Canyon National Park – Small Craft Collection
Documentation Project – August 8 – 13, 2003

Boat Name: GLEN

Catalog No.: _____

Acq. No.: GRCA -

Station No.: 2

Station Notes:

HORIZ BASE = 28"

Point	Vert.	Horz.																		C	L
TO. SH	45-4+	17-41	10.5																		
BTM. SH	38-3	17-2	10.75																		
2	32-1	18-1-	9.875																		
3	28-1	19-5	8.375																		
CHINE	24-3	22-1	5.875																		
Rabbit																					
Keel	25-5	0-0																			

Base

Measurement Notes:

Measured by: _____ Date: _____

Grand Canyon National Park – Small Craft Collection
Documentation Project – August 8 – 13, 2003

Boat Name: GLEN

Catalog No.: _____

Acq. No.: GRCA -

Station No.: 3

Station Notes:

HORIZ. BASE @ 28"

Point	Vert.	Horz.										C I L
TD SH	44-7	12-7	15.125									
STM SH	36-7+	12-6	15.25									
2	13-6 ⁺	32-4	14.25									
3	28-6	15-7	12.125									
CHINE	24-7	18-7	9.125									
TD. DECK	47-3											
Rabbet												
Keel		0-0										

Base

Measurement Notes:

DECK & FRO HATH = 46.7 (VERT.)

Measured by: _____ Date: _____

Grand Canyon National Park – Small Craft Collection
Documentation Project – August 8 – 13, 2003

Boat Name: GLEN

Catalog No.: _____

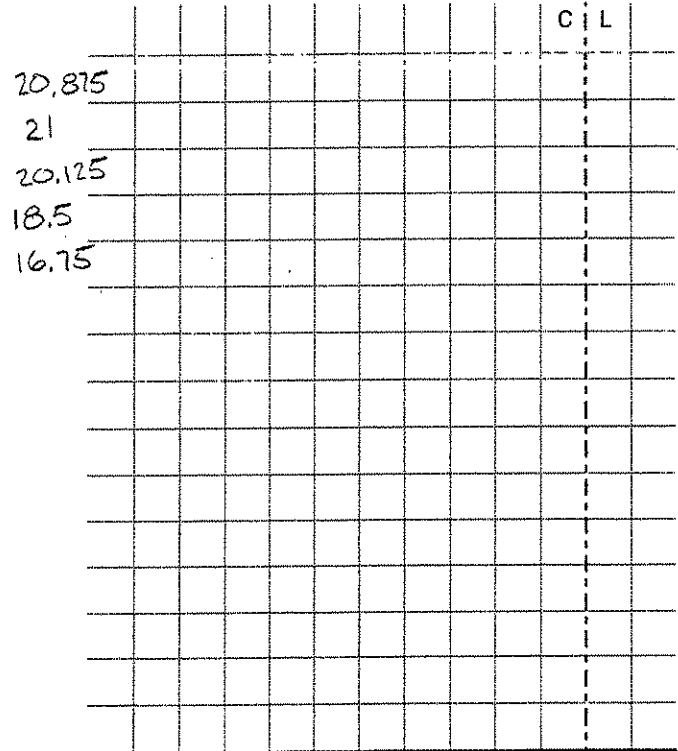
Acq. No.: GRCA-

Station No.: 5

Station Notes:

HORIZ BASE = 29"

Point	Vert.	Horz.
TO SHR	41-1	8-1
BTM SHR	34-2+	8-0
2	29-7	8-7+
3	25-6	10-4
CHINE	21-7	12-2
Rabbit		
Keel	20-2+	0-0



Measurement Notes:

Measured by: _____ Date: _____

Grand Canyon National Park – Small Craft Collection
Documentation Project – August 8 – 13, 2003

Boat Name: GLEN

Catalog No.: _____

Acq. No.: GRCA-

Station No.: 7

Station Notes:

HORIZ. BASE @ 29"

Point	Vert.	Horz.								C L
T.O. DECK AT HATCH	44-5+									
T.O. HATCH	48-1	19-4-	9.5							
T.O. SHR	39-2+	4-5	24.375							
BTM SHR	32-7	4-3	24.625							
2	28-3	5-3	23.625							
3	24-3	6-7	22.125							
CHINE	20-0	9-6	19.25							
Rabbit										
Keel	18-0	0-0								

Base

Measurement Notes:

Measured by: _____

Date: _____

Grand Canyon National Park - Small Craft Collection
Documentation Project - August 8 - 13, 2003

Boat Name: GLEN

Catalog No.: _____

Acq. No.: GRCA-

Station No.: 9

Station Notes:

HORIZ. BASE @ 30"

Point	Vert.	Horz.											C	L
T.O. INNER BLOCK	39-5+	6-5-	23.375											
T.O. SHR	39-2	4-0	26											
BTM SHR	32-0	3-6	26.25											
2	27-4	4-4	25.5											
3	23-3	6-0	24											
CHINE	18-5+	9-0	21											
Rabbit														
Keel	16-6	0-0												

Base

Measurement Notes:

Measured by: _____ Date: _____

Grand Canyon National Park – Small Craft Collection
 Documentation Project – August 8 – 13, 2003

Boat Name: GLEN

Catalog No.: _____

Acq. No.: GRCA-

Station No.: 11

Station Notes:

HORZ. BASE E 31"

Point	Vert.	Horz.															C	L
TD. SHR	37-6+	4-4	26.5															
BTM SHR	31-5+	4-2	26.75															
2	27-1	5-0	26															
3	23-7+	6-4	24.5															
CHINE	17-7+	9-6	21.25															
Rabbit																		
Keel	16-4	0-0																

Measurement Notes:

Measured by: _____ Date: _____

Grand Canyon National Park -- Small Craft Collection
Documentation Project -- August 8 - 13, 2003

Boat Name: GLEN

Catalog No.: _____

Acq. No.: GRCA -

Station No.: 13

Station Notes:

HORIZ. BASE @ 31"

Point	Vert.	Horz.									C	L
TO. HATCH	46-4											
DECK @ HATCH	43-5+	21-5	9.375									
TO. SHR	37-6+	5-2+	25.75									
BTM SHR	32-0	5-0+	26									
2	27-1	8-7	22.125									
3	22-6	7-3	23.625									
CHINE	18-0	10-4	20.5									
Rabbit												
Keel	16-4	0-0										

Base

Measurement Notes:

Measured by: _____ Date: _____

Grand Canyon National Park – Small Craft Collection
 Documentation Project – August 8 – 13, 2003

Boat Name: GLEN

Catalog No.: _____

Acq. No.: GRCA-

Station No.: 15

Station Notes:

HORZ. BASE @ 30"

Point	Vert.	Horz.										C	L
T.O. HATCH													
DECK @ HATCH	43-1	20-3+	9.625										
TD, SHR	38-5	6-2	23.75										
BTM SHR	32-6+	6-0+	24										
2	27-5+	7-0	23										
3	23-3	8-7+	21.125										
CHINE	19-3+	11-7	18.125										
Rabbit													
Keel	18-0	0-0											

Measurement Notes:

Measured by: _____ Date: _____

Grand Canyon National Park – Small Craft Collection
 Documentation Project – August 8 – 13, 2003

Boat Name: GLEN

Catalog No.: _____

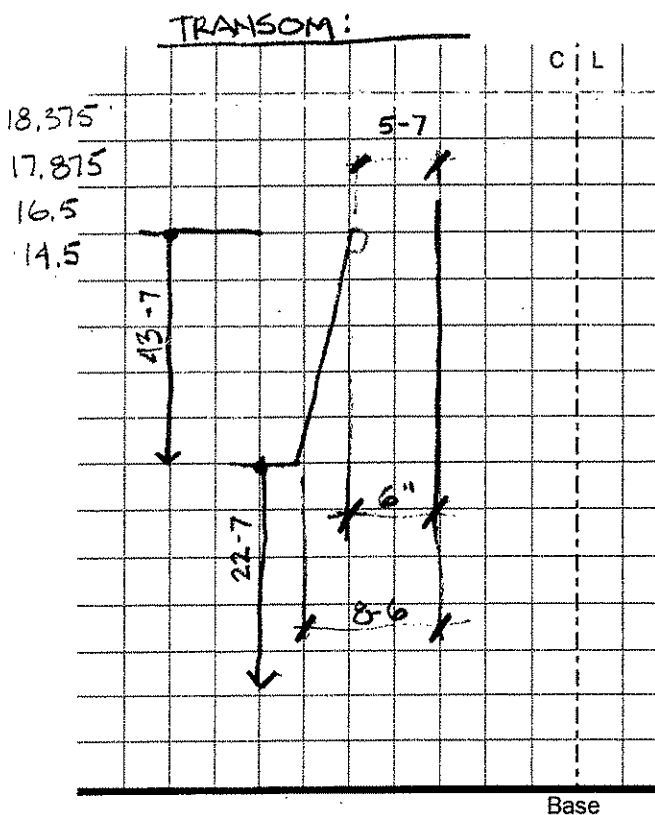
Acq. No.: GRCA -

Station No.: 18

Station Notes:

HOKZ. BASE AT 25"

Point	Vert.	Horz.
T.O. SHR	41-4	6-5+
BTM SHR.	35-0	7-1
2	29-7	8-4
3	25-5+	10-4
CHINE	22-4	
Rabbit		
Keel		0-0



Measurement Notes:

TRANSOM - WIDTH AT BTM. (CHINE) = 12-4

Measured by: _____

Date: _____

Grand Canyon National Park – Small Craft Collection
Documentation Project – August 8 – 13, 2003

Boat Name: GLENA

Catalog No.: _____

Acq. No.: GRCA-

Station No.: 17

Station Notes:

HORIZ. BASE @ 27°

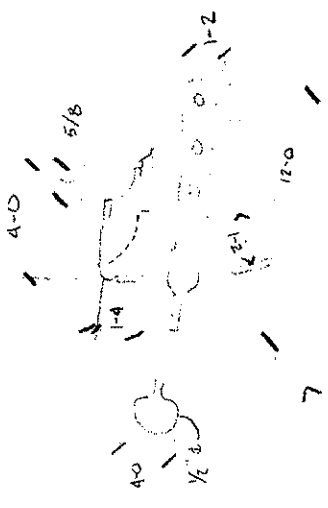
Point	Vert.	Horz.															C	L
TO. DECK	43-7																	
TO. SHR	40-3+	6-6	20.25															
BTM. SHR	34-2	6-7	20.125															
2	29-0	8-1+	18.875															
3	24-7	10-0+	17															
CHINE	21-6	12-5	14.375															
Rabbit																		
Keel	20-7+	0-0																

Base

Measurement Notes:

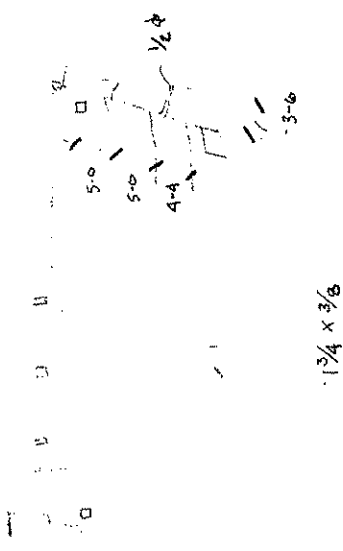
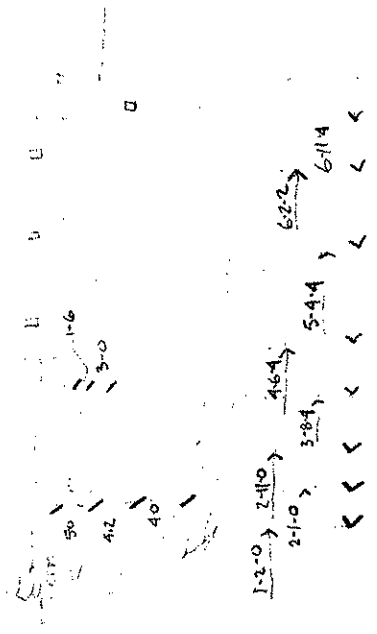
Measured by: _____ Date: _____

GLEN
T. BLOCH
8-13-03

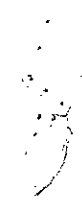


LETTERS - 1/2"

14-0 10-4

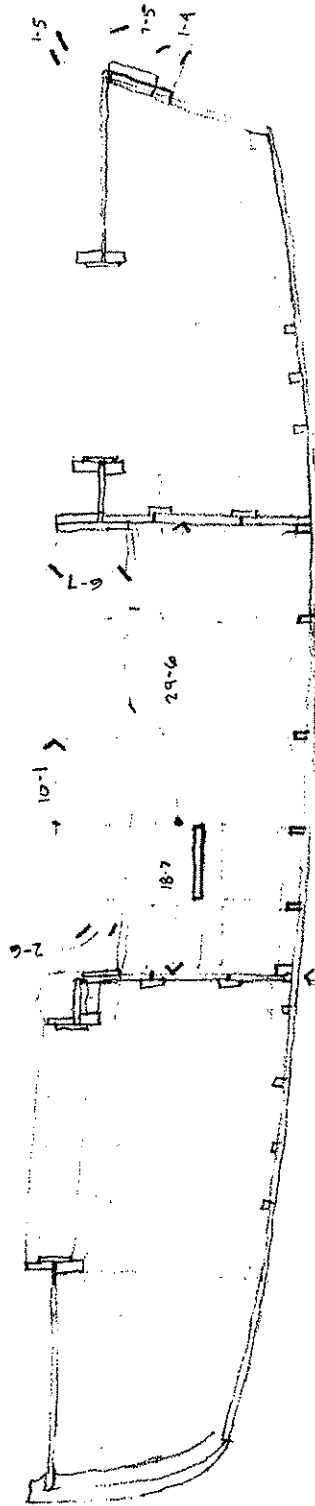


5-0 4-4 4-3



GLEN
T. BLOCH
8-13-03

HATCH BEAM IS CONT.
DECK BM. FRAMES INTO
HATCH BM.



SCANTLINGS

PLANKING = 1/2"

RUBRAIL = 3/4 x 1 1/4"

DECK = 1 3/8" WIDE

TIPART = 7/8"

FRAMES 1/4 x 7/8"

FLOORS 1/4 x 7/8"

CHINE /

FR BDS, 2" x 5/8" (3/4" SPACING)

RISER = 2 1/4 x 3/4"

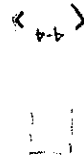
SHLEF = 3" x 3/8"

CLAMP = 3 x 1 1/4"

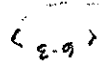
~~DECK PLANKS~~

DECK BEAM = 7/8"

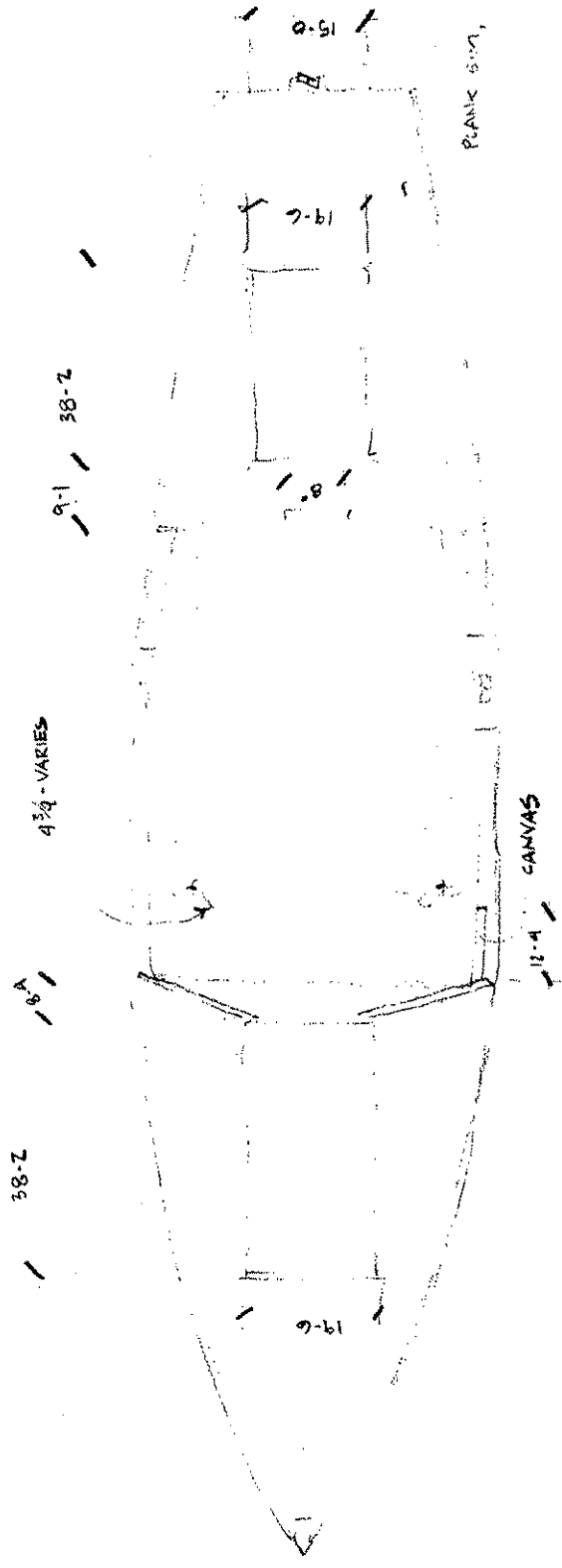
CANVAS SIM.
TO EDITA



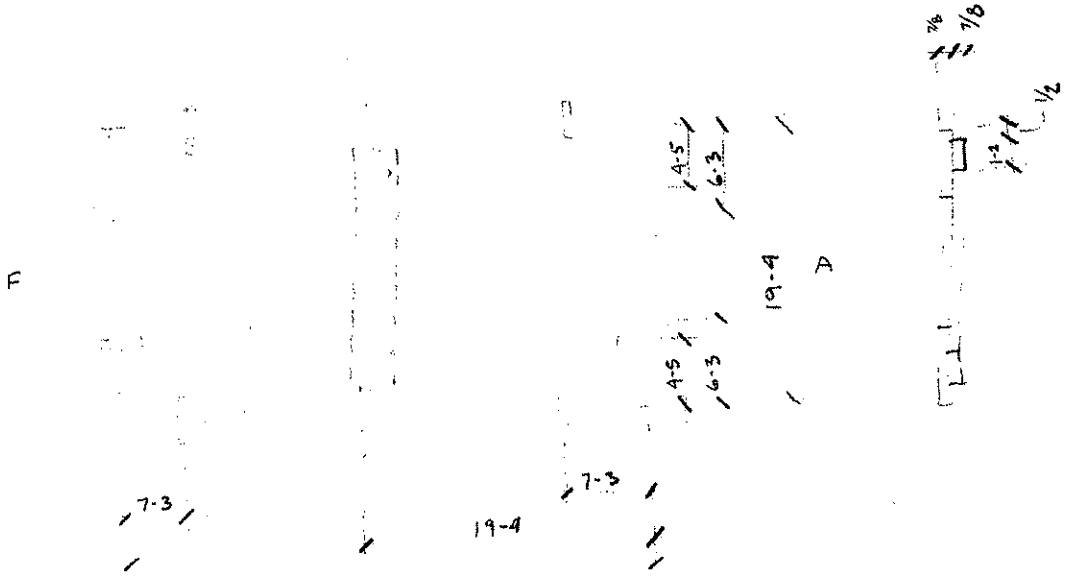
SPLASH GUARD



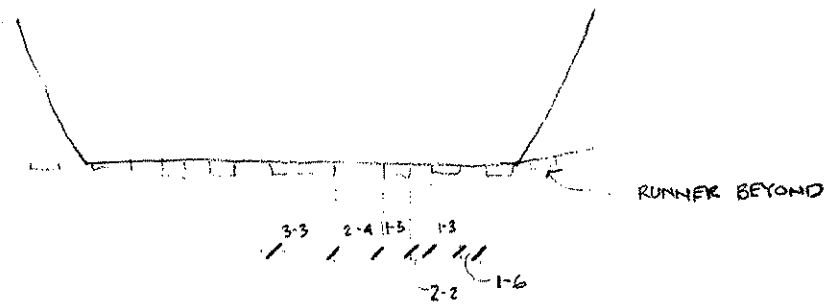
GLEN
T. BLOCH
8.13.03



GLEN
T. BLOCH
8-13-03

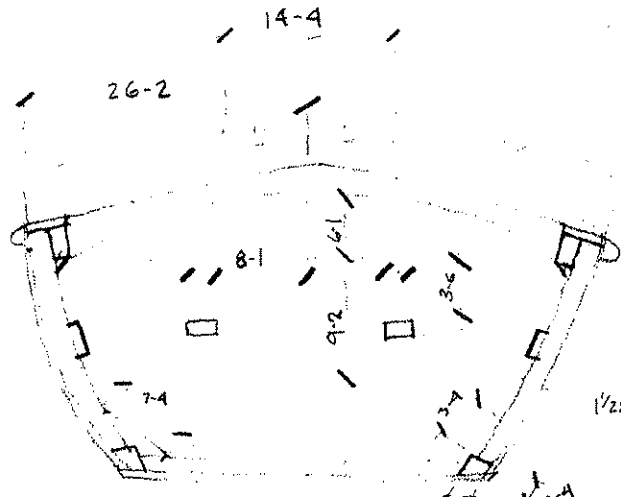


FORWARD HATCH COVER



BOTTOM RUNNERS

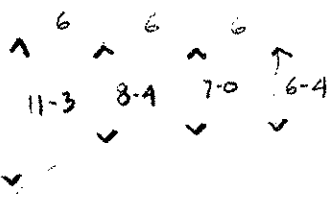
GLEN
 T. BLOCH
 8-13-03



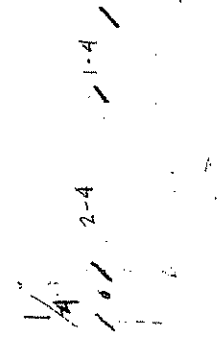
2-0 X 3/4 (BEVELED EDGES)

1/2 x 2 1/2 x 3/8 3/8 7/8

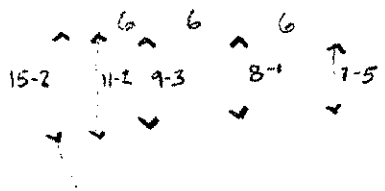
SECTION FRWD OF THWART, VIEW FRWD.



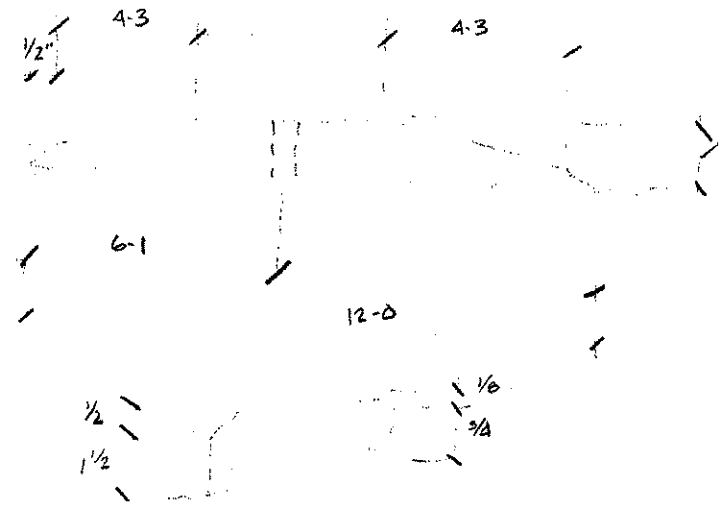
DECK FRWD OF FRWD HATCH



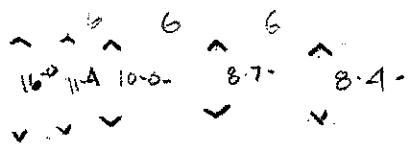
HATCH



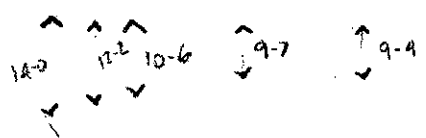
DECK AT FRWD. BLKHD.



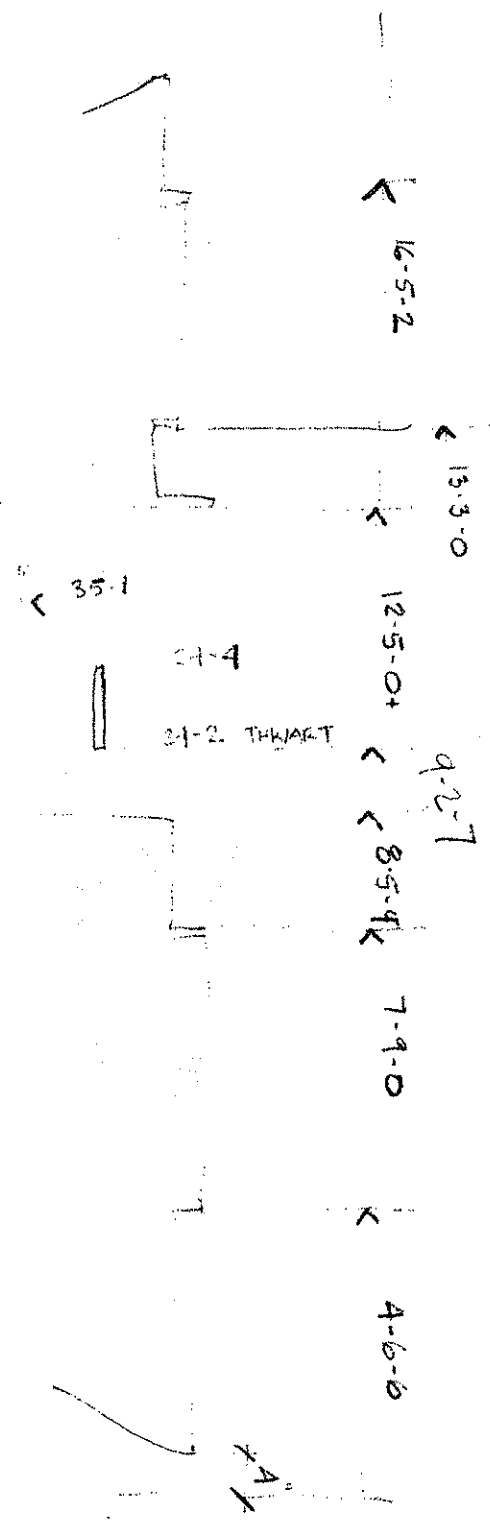
OAR LOCK PAD



DECK AT AFT BLKHD.



DECK AT AFT HATCH



12-4 DECK

12-2 DECK
9-7 HATCH

9-2 HATCH
11-3 COMBING
11-2 DECK
7-1 COMBING

10-1X DECK

9-7 DECK
7-5 HATCH

6-5 HATCH
8-5 DECK

55-4

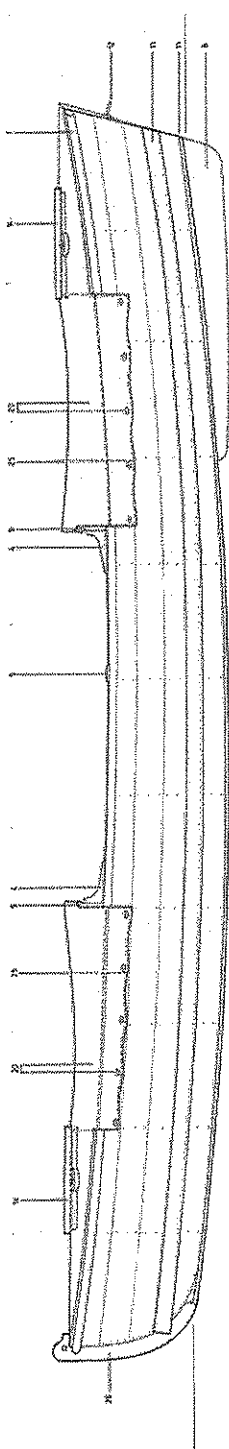
STONE

NOTES

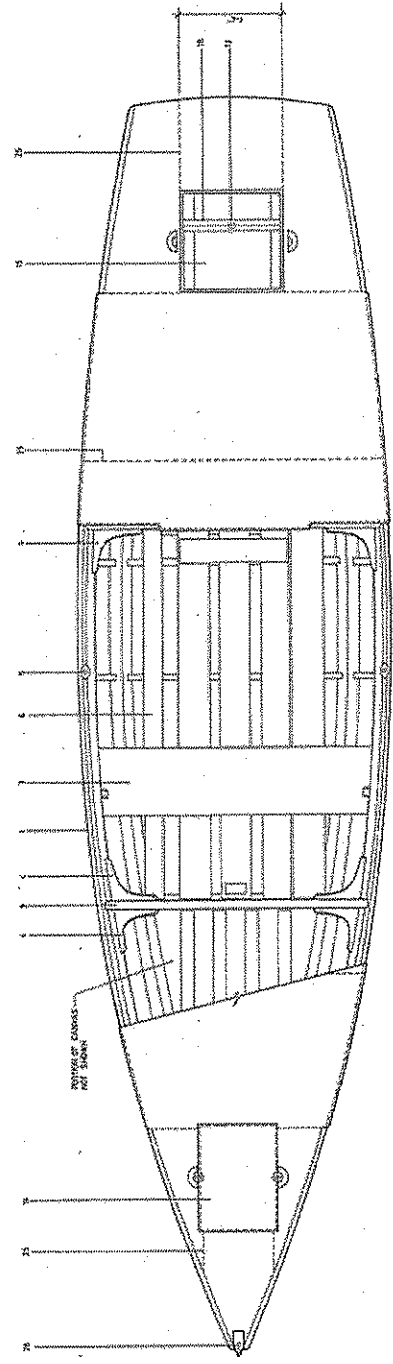
1. MATERIAL DIMENSIONS ARE TO BE GIVEN AND DIMENSIONS AND FINISH. EACH ITEM IS MARKED WITH AN "X".
2. THE STRENGTH MARKS TO BE THERE AND MARK A FOOT WITH ANY OTHER MARKS.
3. IN CASE THERE ARE MARKS AND MARKS WITH OTHER MARKS OF THE FINISH.

KEY

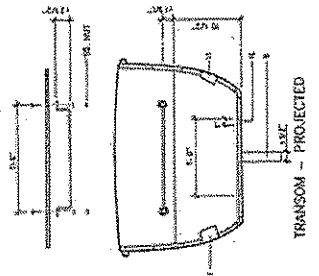
1. HULL
2. DECK
3. SWAY
4. BULKHEADS NOT SHOWN
5. BULKHEAD
6. BULKHEAD
7. BULKHEAD
8. BULKHEAD
9. BULKHEAD
10. BULKHEAD
11. BULKHEAD
12. BULKHEAD
13. BULKHEAD
14. BULKHEAD
15. BULKHEAD
16. BULKHEAD
17. BULKHEAD
18. BULKHEAD
19. BULKHEAD
20. BULKHEAD
21. BULKHEAD
22. BULKHEAD
23. BULKHEAD
24. BULKHEAD
25. BULKHEAD
26. BULKHEAD
27. BULKHEAD
28. BULKHEAD
29. BULKHEAD
30. BULKHEAD
31. BULKHEAD
32. BULKHEAD
33. BULKHEAD
34. BULKHEAD
35. BULKHEAD
36. BULKHEAD
37. BULKHEAD
38. BULKHEAD
39. BULKHEAD
40. BULKHEAD
41. BULKHEAD
42. BULKHEAD
43. BULKHEAD
44. BULKHEAD
45. BULKHEAD
46. BULKHEAD
47. BULKHEAD
48. BULKHEAD
49. BULKHEAD
50. BULKHEAD
51. BULKHEAD
52. BULKHEAD
53. BULKHEAD
54. BULKHEAD
55. BULKHEAD
56. BULKHEAD
57. BULKHEAD
58. BULKHEAD
59. BULKHEAD
60. BULKHEAD
61. BULKHEAD
62. BULKHEAD
63. BULKHEAD
64. BULKHEAD
65. BULKHEAD
66. BULKHEAD
67. BULKHEAD
68. BULKHEAD
69. BULKHEAD
70. BULKHEAD
71. BULKHEAD
72. BULKHEAD
73. BULKHEAD
74. BULKHEAD
75. BULKHEAD
76. BULKHEAD
77. BULKHEAD
78. BULKHEAD
79. BULKHEAD
80. BULKHEAD
81. BULKHEAD
82. BULKHEAD
83. BULKHEAD
84. BULKHEAD
85. BULKHEAD
86. BULKHEAD
87. BULKHEAD
88. BULKHEAD
89. BULKHEAD
90. BULKHEAD
91. BULKHEAD
92. BULKHEAD
93. BULKHEAD
94. BULKHEAD
95. BULKHEAD
96. BULKHEAD
97. BULKHEAD
98. BULKHEAD
99. BULKHEAD
100. BULKHEAD



PROFILE - MAIN RECONSTRUCTION



DECK PLAN



TRANSOM - PROJECTED

SCANTLINES

- PLANKING, SOLID - 5/8" WIDE PINE
- PLANKING, BOTTOM - 1 1/2" WIDE, PINE
- DECK - 1 1/2" WIDE PINE
- FRAMES - 2" X 4" SPACED AT 16" OC
- ROCKERS - 2" X 4" SPACED AT 16" OC
- COCKPIT - 1" WIDE PINE, ONE SIDE
- COCKPIT - 2" X 4" ONE
- ROCKERS - 1 1/2" X 4" ONE
- ROCKERS - 1 1/2" X 4" ONE
- CLAMP - 1 1/2" X 4" ONE
- ROCKERS - 1 1/2" WIDE PINE
- ROCKERS - 1 1/2" WIDE PINE
- ROCKERS - 1 1/2" WIDE PINE

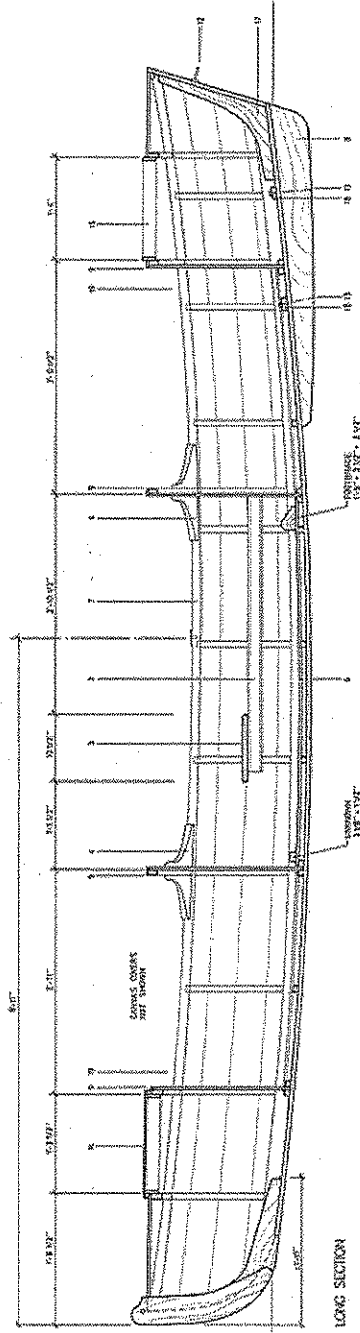
FINISHES

- PLANKING, SOLID - COPPER NAILS/SCREWS
- PLANKING, BOTTOM - COPPER NAILS/SCREWS
- ROCKERS - COPPER NAILS/SCREWS
- CLAMP - COPPER NAILS/SCREWS

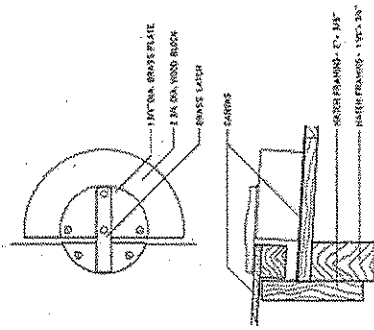
**THE STONE BOAT
GALLOWAY TYPE CATARACT BOAT**

BUILT BY POLIHOI BOAT CO., 1988
NEWPORT, RI

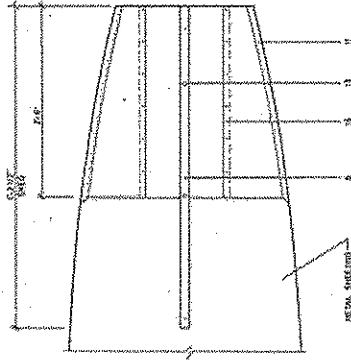
NAME OF BOAT: STONE BOAT
DRAWN AND BUILT BY: POLIHOI BOAT CO.



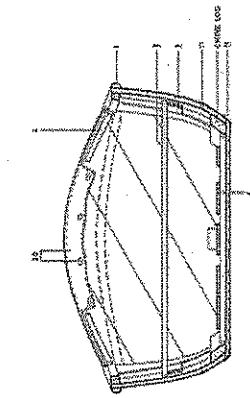
LONG SECTION



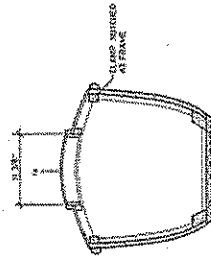
HATCH DETAILS
1/4\"/>



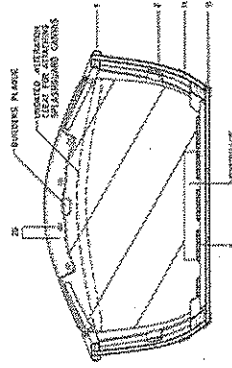
PARTIAL BOTTOM PLAN



MID-SHIP SECTION LOOKING FORWARD



SECTION AT HATCH



MID-SHIP SECTION LOOKING AFT

THE STONE BOAT
GALLOWAY TYPE CATARACT BOAT

BUILT BY POLYNOTION CO., c. 1918

REPRODUCTION

DESIGNED BY
GALLOWAY & CO. LTD.
GLASGOW, SCOTLAND
SCALE 1/8\"/>

Grand Canyon National Park - Small Craft Collection
Documentation Project - August 8 - 13, 2003

L.O.A. 16'-5 3/16"

Boat Name: STONE

Catalog No.: _____

Acq. No.: GRCA-

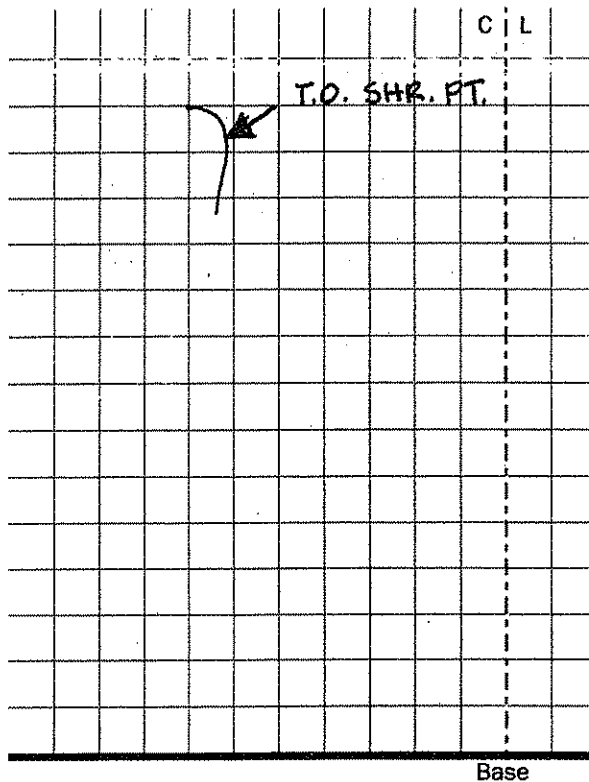
Station No.: _____
STATIONS IN FEET
FROM BOW (HALF ROUND)

Station Notes:

CANVAS HATCH COVERS SEEM TO HAVE SUPPORT BATTENS

1
2
3
4
5
6
7
8
9
10
11
12
13
14
15
16

Point	Vert.	Horz.
Rabbit		
Keel		0-0

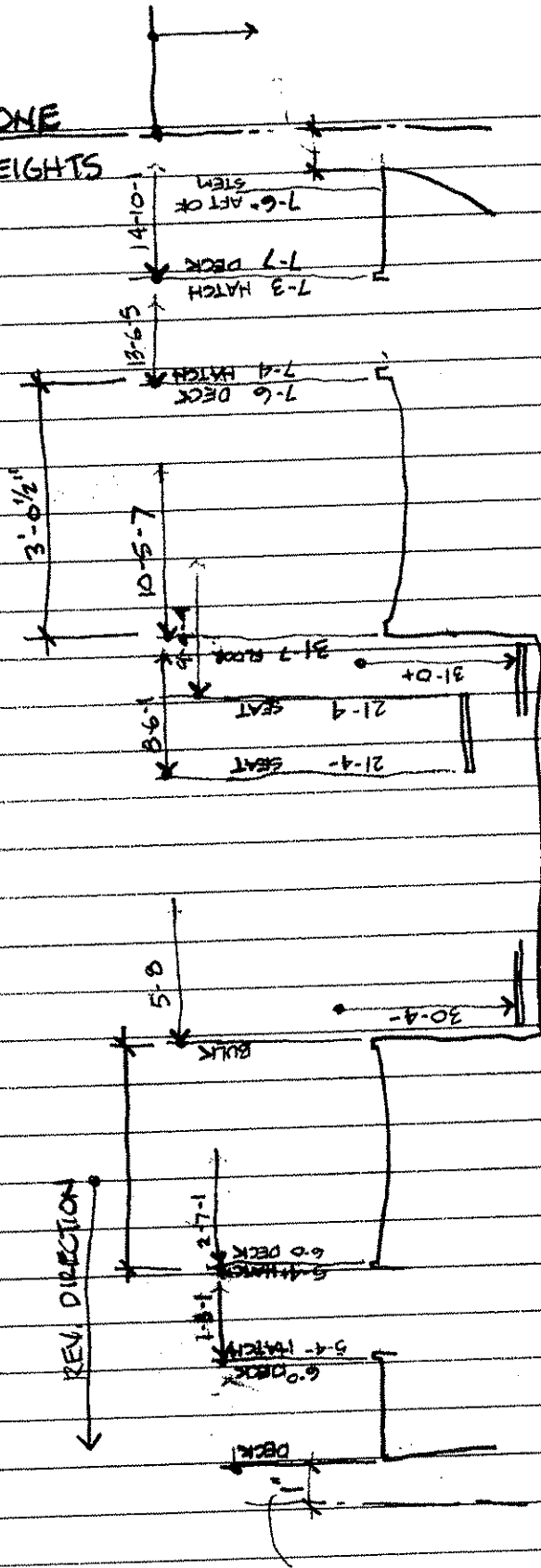


Measurement Notes:

PLANK 3 PTS. ARE ACTUAL AT TOP OF MTL. PLATE
SHEAR POSITION VARIES - HIGH AT BOW & STERN

Measured by: TODD BLOCH, CAMERON STAVELLEY Date: AUG. 2

STONE
HEIGHTS



Grand Canyon National Park – Small Craft Collection
Documentation Project – August 8 – 13, 2003

Boat Name: STONE

Catalog No.: _____

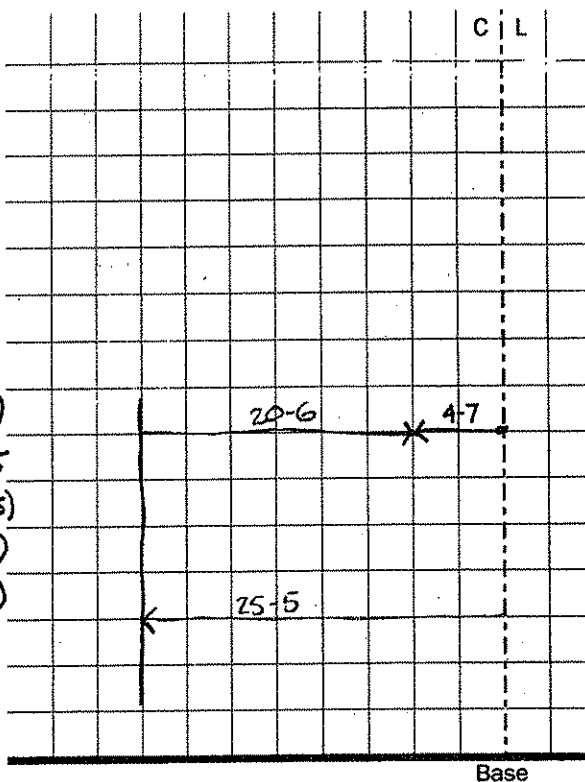
Acq. No.: GRCA-

Station No.: 1

Station Notes:

BASE OFFSET = 25-5

Point	Vert.	Horz.
T.O. DECK	41-3-	
T.O. SHR	40-3-	21-2
BTM. SHR.	34-3	20-7
2	29-5+	21-1
3(PLT)	25-4-	22-1-
CHINE	20-4	24-6+
T.O. DECK	41-3	
T.O. SHR	40-0+	20-6 (4.875)
BTM SHR	34-3-	20-6 (4.875)
2	29-5	21-0- (4.625)
3(PLT)	25-4	21-7 (5.75)
CHINE	20-3	24-4 (1.125)
Rabbit		
Keel		0-0



Measurement Notes:

Measured by: _____

Date: _____

Grand Canyon National Park – Small Craft Collection
Documentation Project – August 8 – 13, 2003

Boat Name: STONE

Catalog No.: _____

Acq. No.: GRCA-

Station No.: 2

ADJ. TWD, BOW 2-4

Station Notes:

BASE OFFSET = 26-1

Point	Vert.	Horz.																	C	L
DECK HATCH	41-3+																			
T.O. SHR.	39-0+	17-6	(8.375)																	
BTM SHR.	33-4-	18-0-	(8.125)																	
2	28-3+	18-4-	(7.625)																	
3(PLT.)	24-1	19-4+	(6.625)																	
CHWE	19-2	22-6+	(3.375)																	
Rabbit																				
Keel		0-0																		

Base

Measurement Notes:

Measured by: _____ Date: _____

Grand Canyon National Park – Small Craft Collection
 Documentation Project – August 8 – 13, 2003

Boat Name: STONE

Catalog No.: _____

Acq. No.: GRCA -

Station No.: 3

Station Notes:

BASE OFFSET 25-7

Point	Vert.	Horz.										C	L
T.O. HATCH	39-1												
T.O. SHR	36-6	12-6+	(13.125)										
BTM. SHR	32-0	12-7+	(13)										
2	26-6	13-6+	(12.125)										
3	22-3+	15-0	(10.875)										
CHINE	17-6+	18-0+	(7.875)										
Rabbit													
Keel		0-0											

Base

Measurement Notes:

Measured by: _____ Date: _____

Grand Canyon National Park – Small Craft Collection
Documentation Project – August 8 – 13, 2003

Boat Name: STONE

Catalog No.: _____

Acq. No.: GRCA-

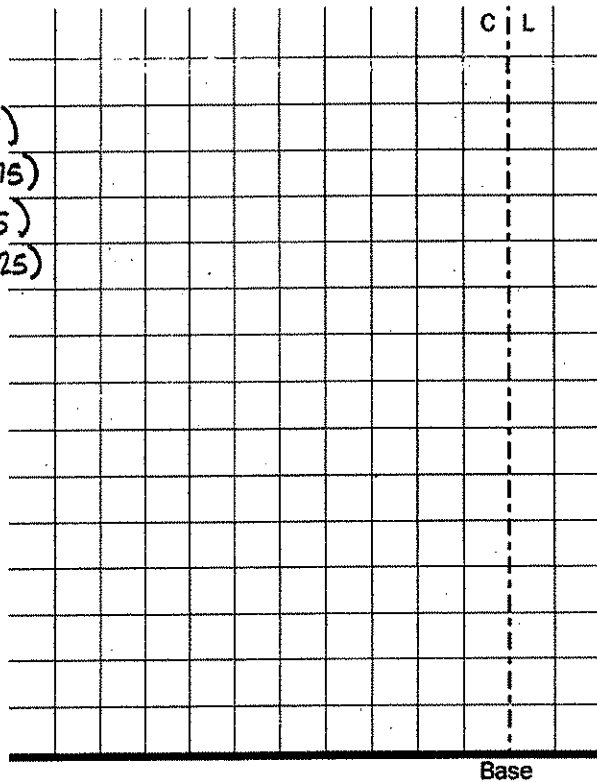
Station No.: 4

Station Notes:

BASE OFFSET = 25-3

SHEAR POSITION CHANGES TO JOINT AT RAIL/PLANK

Point	Vert.	Horz.
T.O. SHR	35-3-	8-5
BTM SHR	31-2-	9-0
2	25-7-	9-7+
3	21-2	11-2+
CHINE	16-5	14-3+
Rabbit		
Keel		0-0



Measurement Notes:

Measured by: _____

Date: _____

Grand Canyon National Park – Small Craft Collection
Documentation Project – August 8 – 13, 2003

Boat Name: STONE

Catalog No.: _____

Acq. No.: GRCA -

Station No.: b

Station Notes:

BASE OFFSET = 25-2

41-7
1-1

Point	Vert.	Horz.																C	L
T.O. BULKHD.	40-6-																		
T.O. SHR	35-0-	4-0-	(21.25)																
BTM. SHR	29-7+	4-5-	(20.625)																
2	24-6	5-3+	(19.875)																
3	20-3	6-5+	(18.625)																
CHINE	15-7	9-6	(15.5)																
Rabbet																			
Keel		0-0																	

Base

Measurement Notes:

Measured by: _____ Date: _____

Grand Canyon National Park - Small Craft Collection
 Documentation Project - August 8 - 13, 2003

Boat Name: STONE

Catalog No.: _____

Acq. No.: GRCA-

Station No.: 8

Station Notes:

BASE OFFSET = 25-3+

Point	Vert.	Horz.								C	L
T.O. INNER RAIL	<u>35-0+</u>	3-7- (21.5)									
T.O. SHR.	34-3+	2-3- (23)									
BTM. SHR	29-1-	2-4- (22.875)									
2	24-3	3-2+ (22.125)									
3	20-5	4-3 (21)									
CHINE	15-2+	7-6- (17.625)									
Rabbet											
Keel		0-0									

Base

Measurement Notes:

Measured by: _____ Date: _____

Grand Canyon National Park – Small Craft Collection
Documentation Project – August 8 – 13, 2003

Boat Name: STONE

Catalog No.: _____

Acq. No.: GRCA -

Station No.: 1D

Station Notes:

BASE OFFSET = 25-5

Point	Vert.	Horz.										C	L
T	34-0+												
T.O. SHR.	33-6	2-6	(22.875)										
BTM. SHR.	29-4-	2-3-	(23.25)										
2	25-1+	3-0+	(22.625)										
3	21-6-	3-7+	(21.75)										
CHINE	16-0	7-1-	(18.5)										
Rabbit													
Keel		0-0											

Measurement Notes:

Measured by: _____ Date: _____

Grand Canyon National Park -- Small Craft Collection
 Documentation Project -- August 8 -- 13, 2003

Boat Name: STONE

Catalog No.: _____

Acq. No.: GRCA-

Station No.: 12

Station Notes:

BASE OFFSET = 26-0

Point	Vert.	Horz.											C	L
T.O. SHR	39-5+	3-5	(22.375)											
BTM. SHR	30-7	4-0-	(22)											
2	26-4+	4-4-	(21.5)											
3	23-1+	5-1	(20.875)											
CHINE	17-1	8-3	(17.625)											
Rabbit														
Keel	15-4-	0-0												

Base

Measurement Notes:

Measured by: _____

Date: _____

Grand Canyon National Park – Small Craft Collection
 Documentation Project – August 8 – 13, 2003

Boat Name: STONE

Catalog No.: _____

Acq. No.: GRCA -

Station No.: 14

Station Notes:

BASE OFFSET = 26-1

47-7
1-1
3-2

Point	Vert.	Horz.		C	L
T.O. MATCH COMB.	46-6-				
T.O. SHR	37-4+	6-6	(19.375)		
BTM. SHR	33-3	6-7-	(19.25)		
2	28-7+	7-3-	(18.75)		
3	25-4	8-1	(18)		
CHINE	19-6	11-1	(15)		
Rabbit					
Keel	15-6+	0-0			

Base

Measurement Notes:

Measured by: _____ Date: _____

Grand Canyon National Park - Small Craft Collection
 Documentation Project - August 8 - 13, 2003

Boat Name: STONE

Catalog No.: _____

Acq. No.: GRCA-

Station No.: 15
 OFFSET $\frac{5}{8}$ AFT

Station Notes:

BASE OFFSET = 26-6

47-2
 1-1

Point	Vert.	Horz.										C	L
T.O. HATCH	46-1												
T.O. SHR	39-2	9-2 (17.5)											
BTM. SHR	35-1-	9-3- (17.375)											
2	30-4+	9-7- (16.875)											
3	27-1+	10-7- (15.875)											
CHINE	21-6	13-7 (12.875)											
Rabbet													
Keel		0-0											

Base

Measurement Notes:

• FOR KEEL, MEASURE DOWN FROM BTM. OF HULL

Measured by: _____ Date: _____

Grand Canyon National Park – Small Craft Collection
Documentation Project – August 8 – 13, 2003

Boat Name: STONE

Catalog No.: _____

Acq. No.: GRCA -

Station No.: 16

Station Notes:

BASE OFFSET = 24-0

43-3
1-1

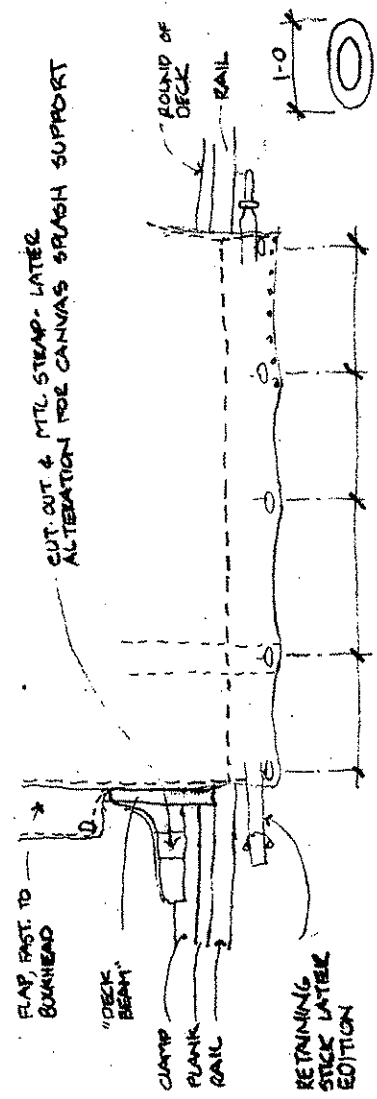
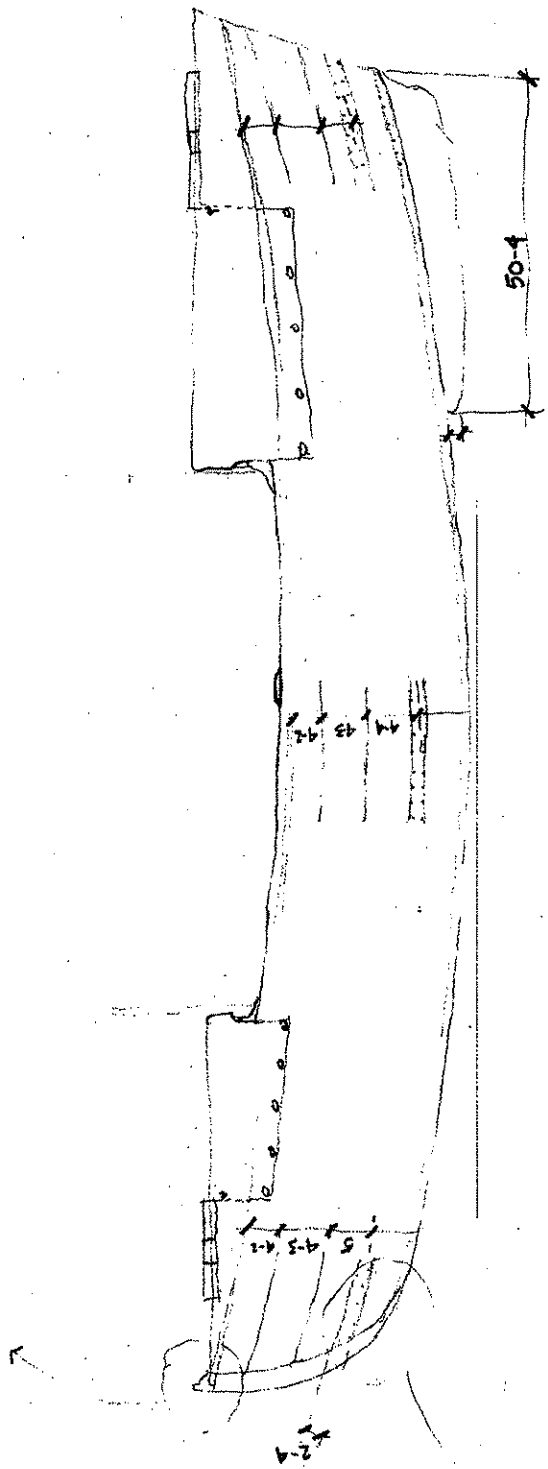
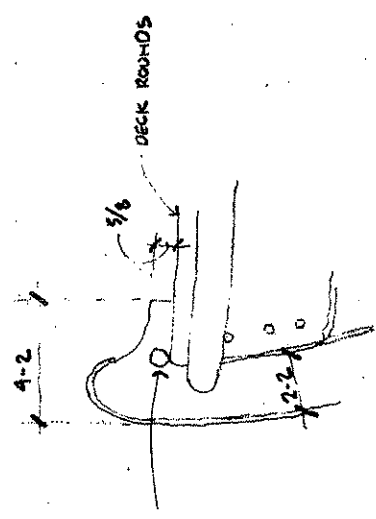
Point	Vert.	Horz.								C	L
TO. DECK	42-2										
TO. SHR.	40-6-	8-2	(15.75)								
BTM. SHR.	36-4	8-4+	(15.5)								
2	33-6+	9-2+	(14.75)								
3	28-3	10-1+	(13.875)								
CHINE	-	-									
Rabbit											
Keel		0-0									

Base

Measurement Notes:

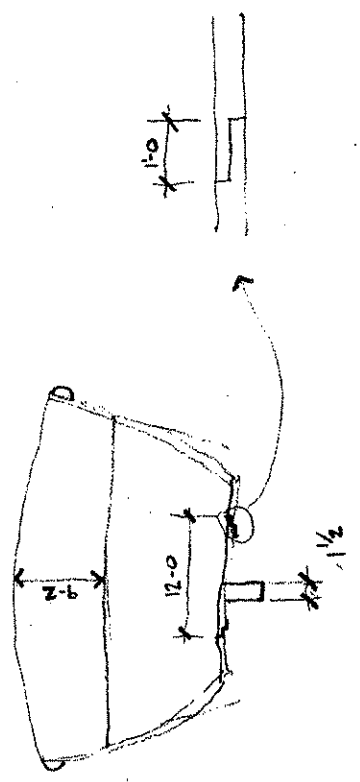
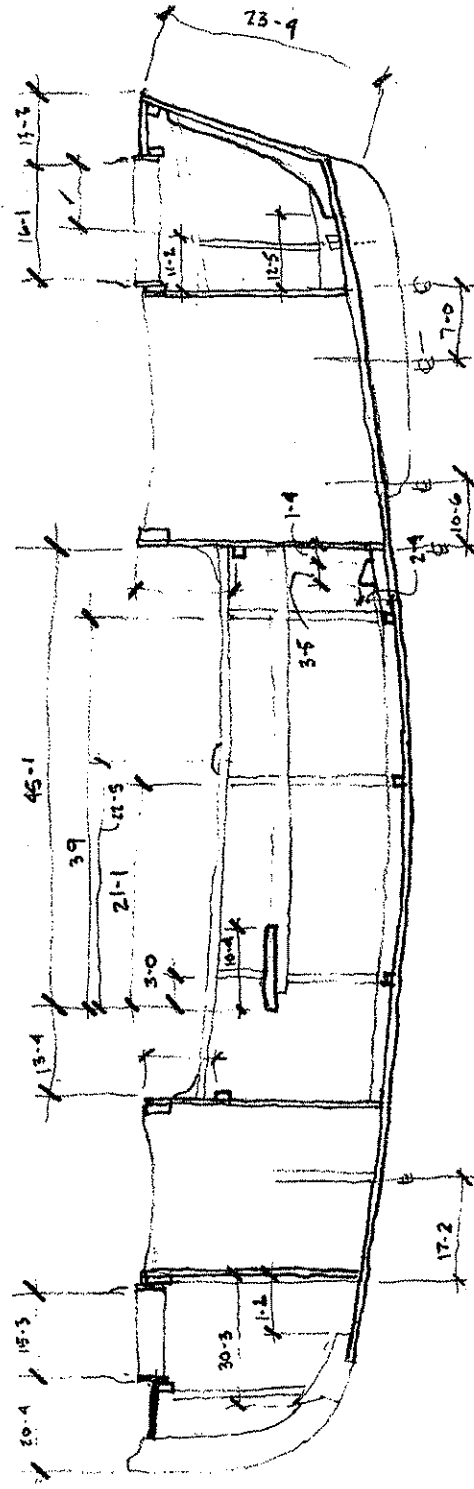
Measured by: _____ Date: _____

STONE
T. BLOCH
8.13.03

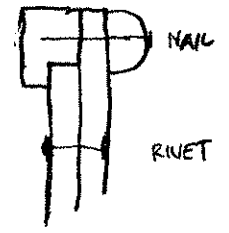
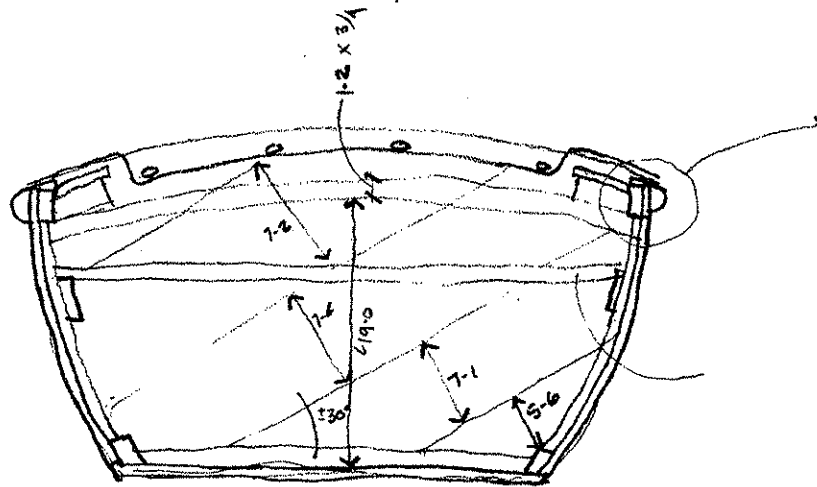


CANNAS CONNECTION, PORT, AFT

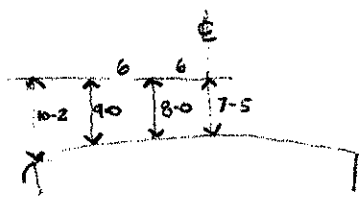
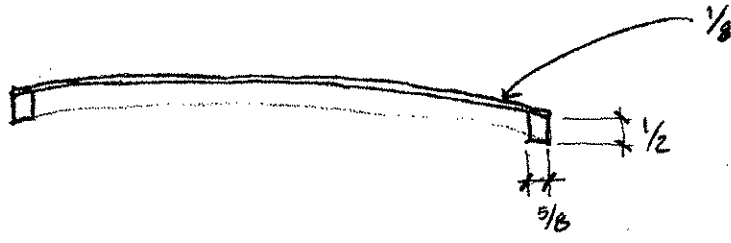
STONE
T. BLOCH
8-15-03



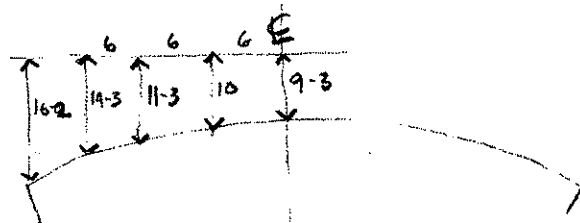
STONE
T. BLOCH
8.13.03



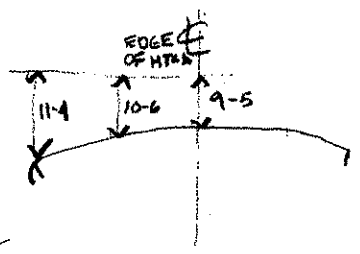
SECTION AFT OF THWART LOOKING FORWARD



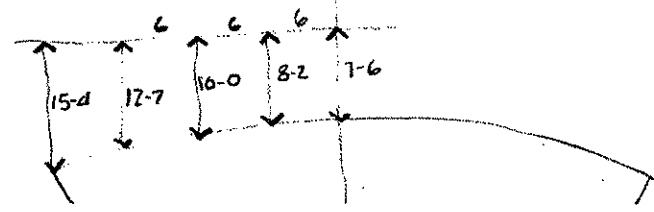
DECK CROWN AFT OF AFT HATCH



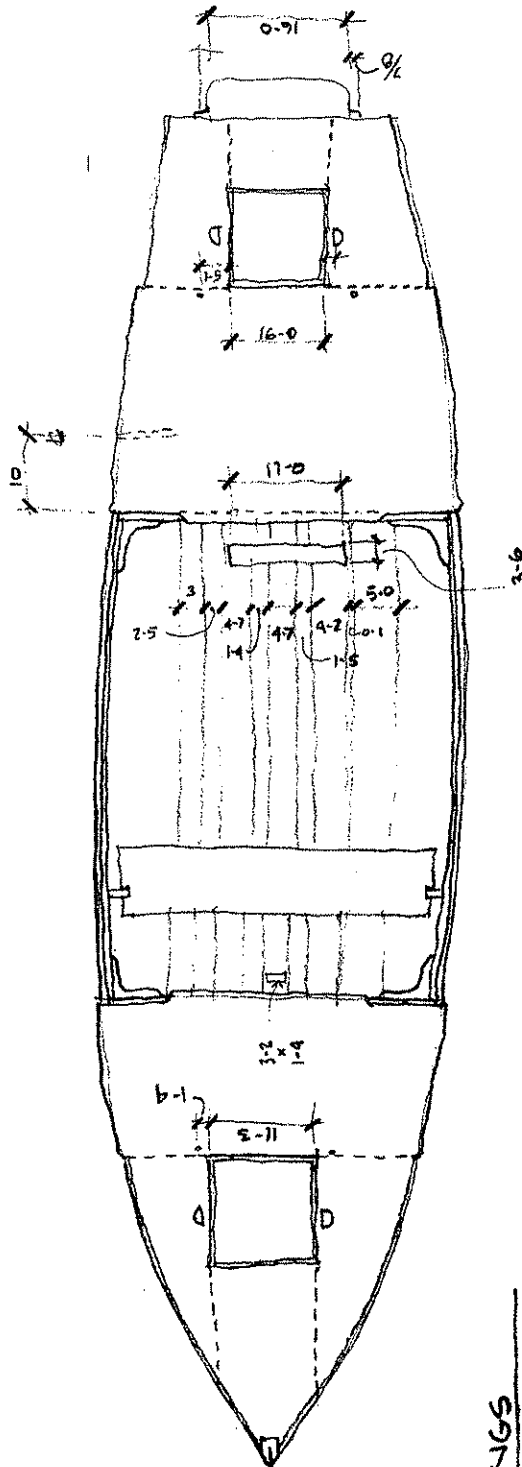
FRND BULKHD.



AFT BULKHD.



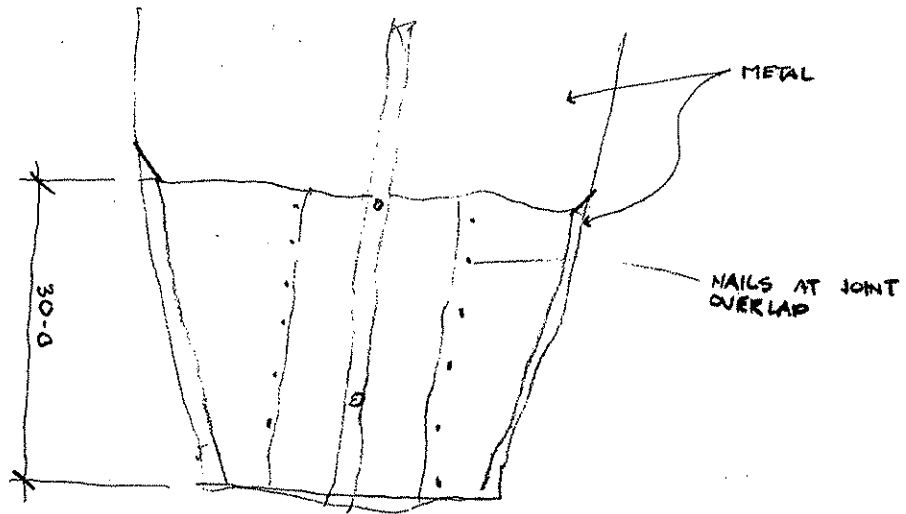
STONE
8-13-03
T. BLOCH



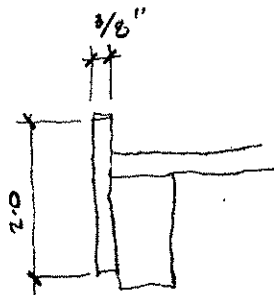
SCANTLINGS

PLANKING	5/8
RUB RAIL	1/4 x 3/4
DECK BEAMS	1/4 x 3/4
FRAMES	7/8 x 3/4
FLOORS	7/8 x 3/4
DECK	?
BOTTOM	5/8
FLOORBO	5/8
THWART	5/8
SWEEP	
CLAMB	1/8 x 1 1/4"
RISER	2 1/4 x 1/2
BUSHHEADS	2 1/4
CHINE	2 1/4 x 1 1/8

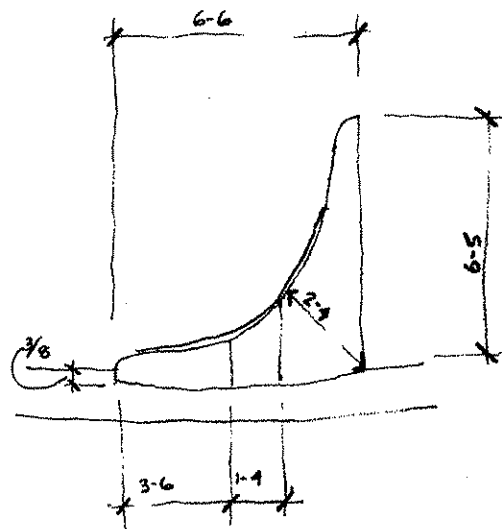
STONE
T. BLOCH
8-13-03



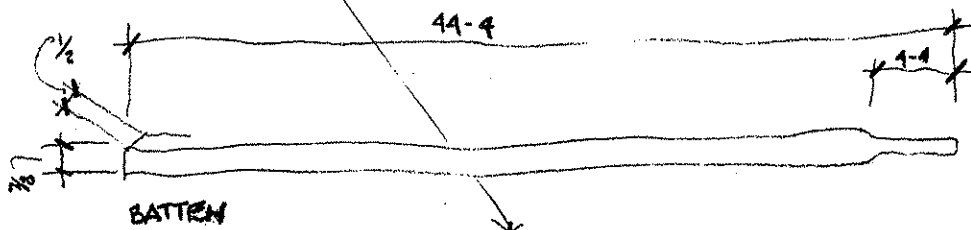
BOTTOM AT STERN



HATCH TRIM



KNEE



BATTEN

