

# Discharge Measurement Summary

Date Generated: Tue Dec 30 2014

## File Information

File Name 09503702.wad  
Start Date and Time 2007/08/02 14:31:21

## Site Details

Site Name  
Operator(s)

## System Information

Sensor Type FlowTracker  
Serial # P1201  
CPU Firmware Version 2.6  
Software Ver 2.30  
Mounting Correction 0.0%

## Units (English Units)

Distance ft  
Velocity ft/s  
Area ft<sup>2</sup>  
Discharge cfs

## Discharge Uncertainty

Category	ISO	Stats
Accuracy	1.0%	1.0%
Depth	0.1%	0.8%
Velocity	0.4%	1.4%
Width	0.1%	0.1%
Method	1.1%	-
# Stations	1.5%	-
<b>Overall</b>	<b>2.1%</b>	<b>1.9%</b>

## Summary

Averaging Int.	40	# Stations	35
Start Edge	LEW	Total Width	25.500
Mean SNR	46.9 dB	Total Area	31.019
Mean Temp	78.21 °F	Mean Depth	1.216
Disch. Equation	Mid-Section	Mean Velocity	2.4807
		<b>Total Discharge</b>	<b>76.9481</b>

# Discharge Measurement Summary

Date Generated: Tue Dec 30 2014

## File Information

File Name 09503702.wad  
Start Date and Time 2007/08/02 14:31:21

## Site Details

Site Name  
Operator(s)

## Measurement Results

St	Clock	Loc	Method	Depth	%Dep	MeasD	Vel	CorrFact	MeanV	Area	Flow	%Q
0	14:31	26.40	None	0.000	0.0	0.000	0.0000	1.00	0.0000	0.000	0.0000	0.0
<i>1</i>	<i>14:31</i>	<i>25.90</i>	<i>0.6</i>	<i>0.220</i>	<i>0.6</i>	<i>0.088</i>	<i>0.5056</i>	<i>1.00</i>	<i>0.5056</i>	<i>0.154</i>	<i>0.0778</i>	<i>0.1</i>
2	14:33	25.00	0.6	0.340	0.6	0.136	1.2064	1.00	1.2064	0.323	0.3895	0.5
3	14:34	24.00	0.6	0.570	0.6	0.228	1.2014	1.00	1.2014	0.570	0.6847	0.9
4	14:35	23.00	0.6	0.840	0.6	0.336	1.3750	1.00	1.3750	0.840	1.1549	1.5
5	14:37	22.00	0.6	0.840	0.6	0.336	1.8248	1.00	1.8248	0.840	1.5326	2.0
6	14:38	21.00	0.6	0.920	0.6	0.368	2.0207	1.00	2.0207	0.920	1.8589	2.4
7	14:39	20.00	0.6	1.010	0.6	0.404	2.2920	1.00	2.2920	0.909	2.0833	2.7
8	14:40	19.20	0.6	1.130	0.6	0.452	2.3983	1.00	2.3983	0.904	2.1684	2.8
9	14:41	18.40	0.6	1.250	0.6	0.500	2.6047	1.00	2.6047	1.000	2.6053	3.4
10	14:43	17.60	0.6	1.280	0.6	0.512	2.5610	1.00	2.5610	1.024	2.6228	3.4
11	14:44	16.80	0.6	1.330	0.6	0.532	2.3156	1.00	2.3156	1.064	2.4639	3.2
12	14:45	16.00	0.6	1.210	0.6	0.484	2.6040	1.00	2.6040	0.968	2.5212	3.3
13	14:46	15.20	0.6	1.200	0.6	0.480	2.8081	1.00	2.8081	0.960	2.6960	3.5
14	14:48	14.40	0.6	1.150	0.6	0.460	2.9219	1.00	2.9219	0.920	2.6887	3.5
15	14:49	13.60	0.6	1.070	0.6	0.428	2.9108	1.00	2.9108	0.856	2.4919	3.2
16	14:50	12.80	0.6	1.320	0.6	0.528	2.6368	1.00	2.6368	1.056	2.7849	3.6
17	14:51	12.00	0.6	1.380	0.6	0.552	2.7828	1.00	2.7828	1.104	3.0728	4.0
18	14:52	11.20	0.6	1.480	0.6	0.592	2.7782	1.00	2.7782	1.109	3.0797	4.0
19	14:54	10.50	0.6	1.490	0.6	0.596	2.9619	1.00	2.9619	1.116	3.3052	4.3
20	14:56	9.70	0.2/0.8	1.620	0.2	1.296	3.1414	1.00	2.8761	1.215	3.4940	4.5
20	14:57	9.70	0.2/0.8	1.620	0.8	0.324	2.6109					
21	14:59	9.00	0.8/0.2	1.860	0.2	1.488	3.1099	1.00	2.6112	1.209	3.1565	4.1
21	14:58	9.00	0.8/0.2	1.860	0.8	0.372	2.1125					
22	15:00	8.40	0.2/0.8	1.890	0.2	1.512	3.0948	1.00	2.8404	1.134	3.2209	4.2
22	15:01	8.40	0.2/0.8	1.890	0.8	0.378	2.5860					
23	15:04	7.80	0.8/0.2	1.980	0.2	1.584	3.0640	1.00	2.3962	1.188	2.8469	3.7
23	15:03	7.80	0.8/0.2	1.980	0.8	0.396	1.7283					
24	15:05	7.20	0.2/0.8	1.900	0.2	1.520	3.0866	1.00	2.5766	1.140	2.9376	3.8
24	15:06	7.20	0.2/0.8	1.900	0.8	0.380	2.0666					
25	15:08	6.60	0.8/0.2	1.730	0.2	1.384	3.0846	1.00	2.4126	1.038	2.5045	3.3
25	15:07	6.60	0.8/0.2	1.730	0.8	0.346	1.7405					
26	15:10	6.00	0.2/0.8	1.830	0.2	1.464	3.0046	1.00	2.5674	1.098	2.8189	3.7
26	15:11	6.00	0.2/0.8	1.830	0.8	0.366	2.1302					
27	15:12	5.40	0.8/0.2	1.830	0.2	1.464	3.0371	1.00	2.3891	1.098	2.6231	3.4
27	15:12	5.40	0.8/0.2	1.830	0.8	0.366	1.7411					
28	15:14	4.80	0.2/0.8	1.800	0.2	1.440	3.0554	1.00	2.5773	1.080	2.7835	3.6
28	15:15	4.80	0.2/0.8	1.800	0.8	0.360	2.0991					
29	15:18	4.20	0.2/0.6/0.8	1.700	0.2	1.360	2.9475	1.00	2.3637	1.020	2.4109	3.1
29	15:19	4.20	0.2/0.6/0.8	1.700	0.6	0.680	2.8865					
29	15:17	4.20	0.2/0.6/0.8	1.700	0.8	0.340	0.7343					
30	15:24	3.60	0.8/0.6/0.2	1.380	0.2	1.104	2.8698	1.00	3.1030	0.828	2.5694	3.3
30	15:23	3.60	0.8/0.6/0.2	1.380	0.6	0.552	3.1631					
30	15:20	3.60	0.8/0.6/0.2	1.380	0.8	0.276	3.2162					
31	15:25	3.00	0.6	1.400	0.6	0.560	2.9751	1.00	2.9751	0.840	2.4992	3.2
32	15:27	2.40	0.6	1.240	0.6	0.496	1.9272	1.00	1.9272	0.744	1.4338	1.9
33	15:28	1.80	0.6	1.000	0.6	0.400	1.8222	1.00	1.8222	0.750	1.3660	1.8
34	15:28	0.90	None	0.000	0.0	0.000	0.0000	1.00	0.0000	0.000	0.0000	0.0

Rows in italics indicate a QC warning. See the Quality Control page of this report for more information.

# Discharge Measurement Summary

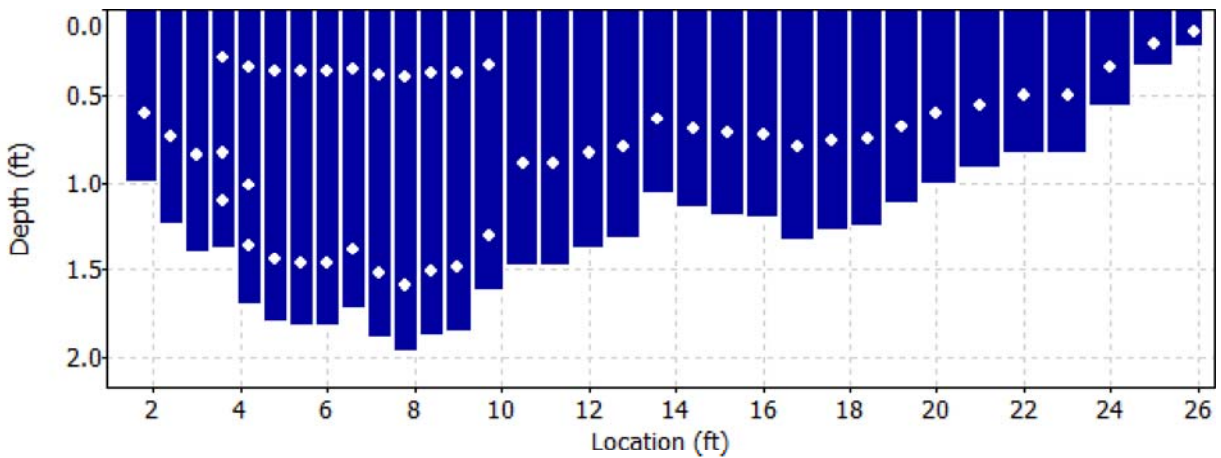
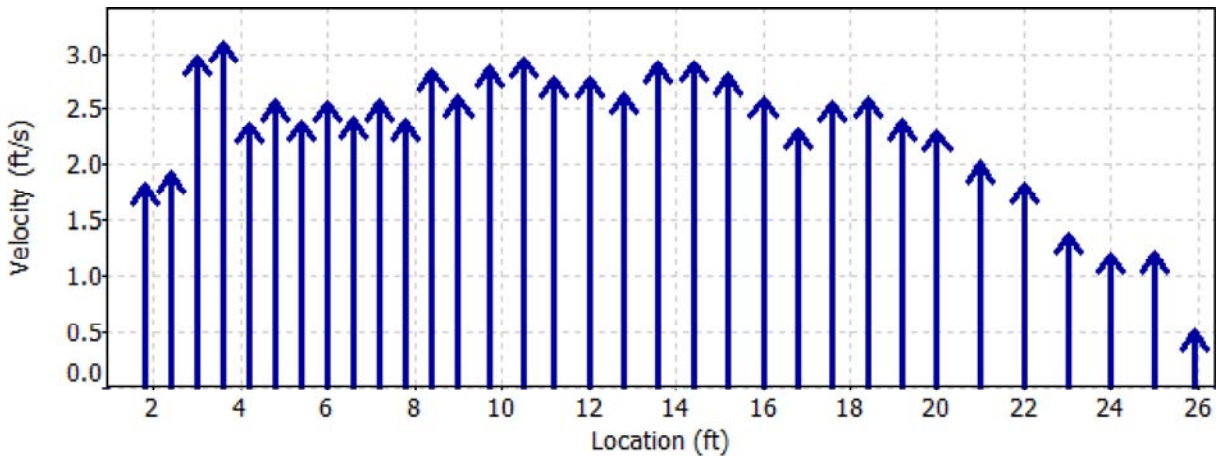
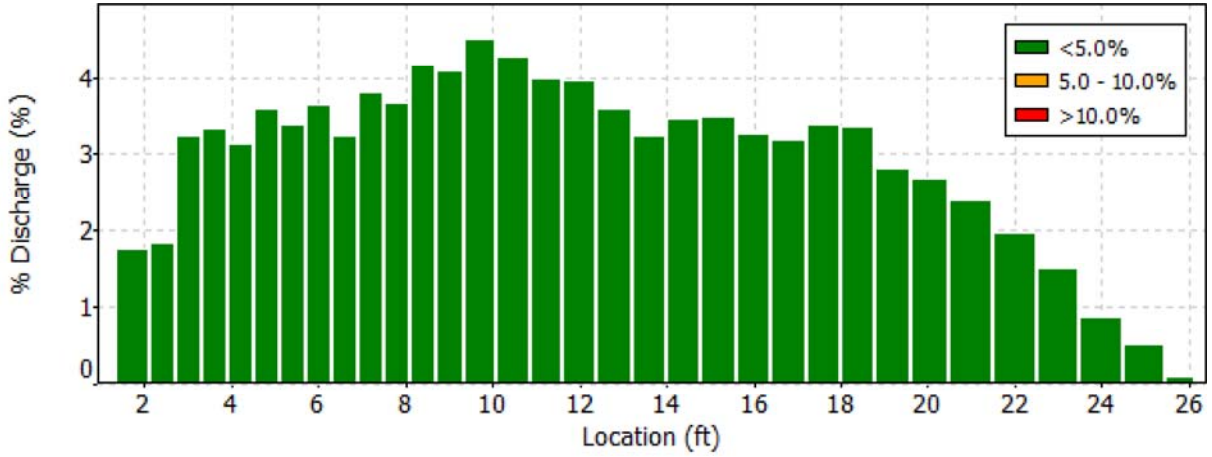
Date Generated: Tue Dec 30 2014

## File Information

File Name 09503702.wad  
Start Date and Time 2007/08/02 14:31:21

## Site Details

Site Name  
Operator(s)



# Discharge Measurement Summary

Date Generated: Tue Dec 30 2014

**File Information**

File Name 09503702.wad  
Start Date and Time 2007/08/02 14:31:21

**Site Details**

Site Name  
Operator(s)

**Quality Control**

St	Loc	%Dep	Message
1	25.90	0.6	Boundary QC is Fair; possible boundary interference
23	7.80	0.8	High standard error: 0.096
24	7.20	0.8	High standard error: 0.106
25	6.60	0.8	High standard error: 0.139
26	6.00	0.8	High standard error: 0.121
27	5.40	0.8	High standard error: 0.127
29	4.20	0.8	High standard error: 0.111