

FIG. 29.—Depth to standing water, Tempe sheet—less than 10 feet, from 10 to 20 feet, and from 20 to 50 feet.

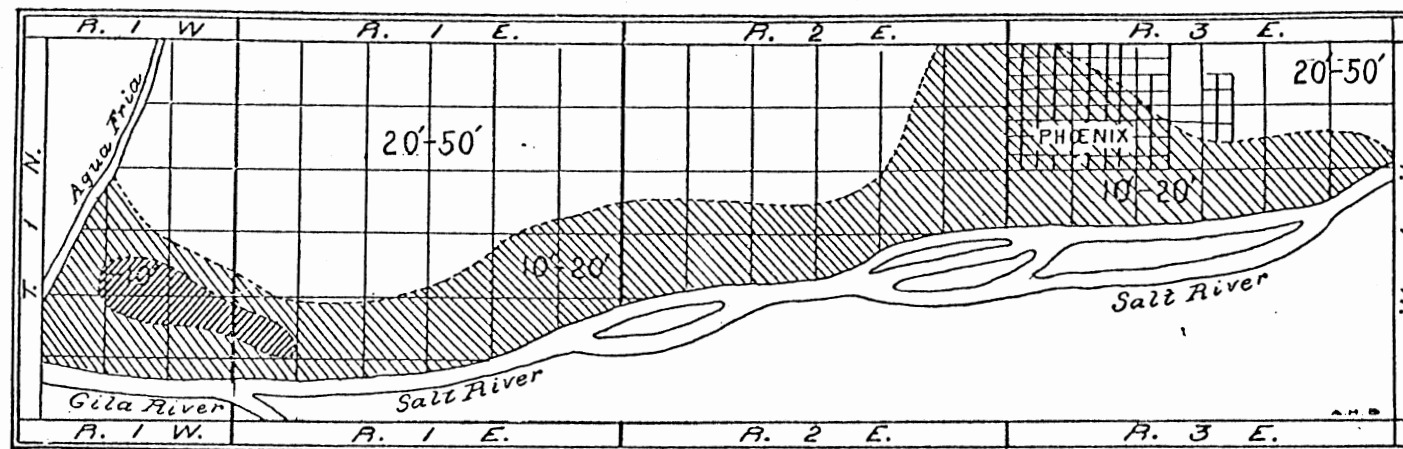


FIG. 30.—Depth to standing water, Phoenix sheet—less than 10 feet, from 10 to 20 feet, and from 20 to 50 feet.

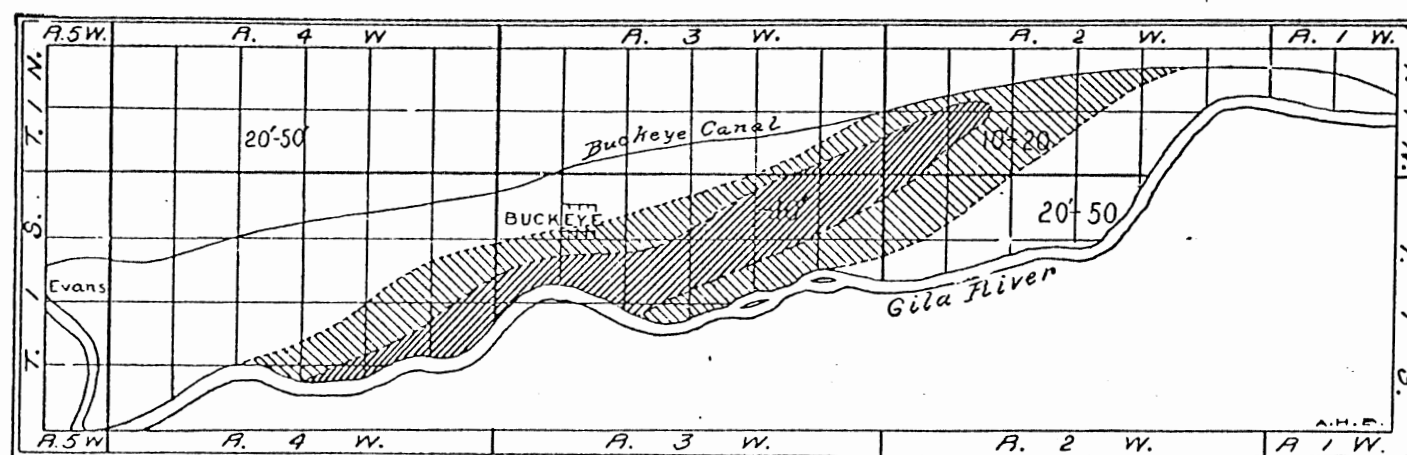


FIG. 31.—Depth to standing water, Buckeye sheet—less than 10 feet, from 10 to 20 feet, and from 20 to 50 feet.

SOURCE: Thomas H. Means, Soil Survey in Salt River Valley, Arizona (Washington, 1900).