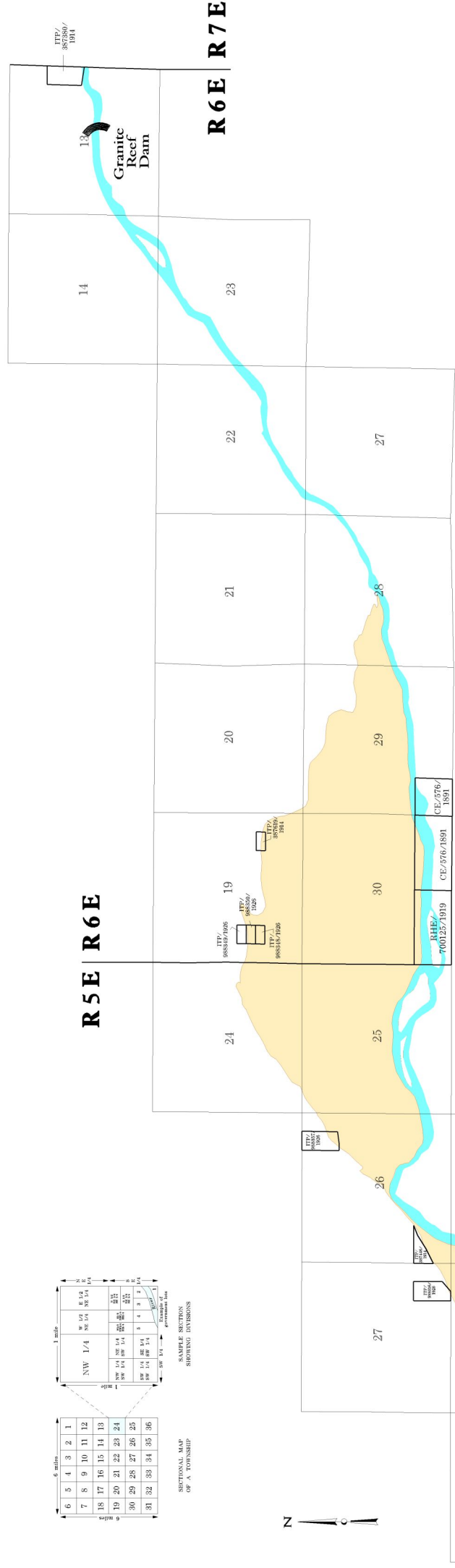


SECTIONAL MAP OF A TOWNSHIP

SECTIONAL MAP SHOWING DIMENSIONS



LEGEND

- Township / Range line drawn according to United States Geological Survey
- Section line drawn according to United States Geological Survey quadrangles * dated 1904-1914
- Township number
- Range number
- Section number
- Salt River according to United States Geological Survey quadrangles * dated 1904 - 1914
- Dry river bed according to United States Geological Survey quadrangles * dated 1904-1914
- Patent *** ITP / 1906/897 / 1933
- Patent number
- Date of patent
- Patent type

- Bureau of Land Management Patent Abbreviations
- AC Act of Congress
 - ARPT Airport patent
 - BLM Bureau of Land Management
 - DE Desert land entry
 - FE Forest exchange
 - FX Forest exchange
 - ITP Indian trust patent
 - MIN Mineral entry
 - PK Private exchange
 - RE Recreation and public purposes
 - RHE Reclamation homestead entry
 - REPP Recreation and public purposes
 - TC Timber culture

* United States Geological Survey Quadrangles
 *Camoluck, Ariz., 142,500, 1904
 *Desert Well, Ariz., 142,500, 1904
 *Ft. McDowell, Ariz., 142,500, 1904
 *Mesa, Ariz., 142,500, 1913
 *Phoenix, Ariz., 142,500, 1914 reprinted 1946

T2N R5E												T2N R6E												T2N R7E											
6	5	4	3	2	1	6	5	4	3	2	1	6	5	4	3	2	1	6	5	4	3	2	1												
7	8	9	10	11	12	7	8	9	10	11	12	7	8	9	10	11	12	7	8	9	10	11	12												
13	14	15	16	17	18	13	14	15	16	17	18	13	14	15	16	17	18	13	14	15	16	17	18												
19	20	21	22	23	24	19	20	21	22	23	24	19	20	21	22	23	24	19	20	21	22	23	24												
25	26	27	28	29	30	25	26	27	28	29	30	25	26	27	28	29	30	25	26	27	28	29	30												
31	32	33	34	35	36	31	32	33	34	35	36	31	32	33	34	35	36	31	32	33	34	35	36												
T1N R5E												T1N R6E												T1N R7E											
6	5	4	3	2	1	6	5	4	3	2	1	6	5	4	3	2	1	6	5	4	3	2	1												
7	8	9	10	11	12	7	8	9	10	11	12	7	8	9	10	11	12	7	8	9	10	11	12												
13	14	15	16	17	18	13	14	15	16	17	18	13	14	15	16	17	18	13	14	15	16	17	18												
19	20	21	22	23	24	19	20	21	22	23	24	19	20	21	22	23	24	19	20	21	22	23	24												
25	26	27	28	29	30	25	26	27	28	29	30	25	26	27	28	29	30	25	26	27	28	29	30												
31	32	33	34	35	36	31	32	33	34	35	36	31	32	33	34	35	36	31	32	33	34	35	36												

AREA OF STUDY



FEDERAL LAND PATENTS ALONG THE HISTORIC SALT RIVER CHANNEL (1904-1912) T2N R6E AND T1N R5E.