

31

WE GUARANTEE

That each and every article in this catalog is exactly as described and illustrated.

We guarantee that any article purchased from us will satisfy you perfectly; that it will give the service you have a right to expect; that it represents full value for the price you pay.

If for any reason whatever you are dissatisfied with any article purchased from us we expect you to return it to us at our expense. We will then exchange it for exactly what you want, or will return your money, including any transportation charges you have paid.

Sears, Roebuck and Co.
Chicago

How to Measure for Men's, Women's and Children's Wearing Apparel

A page of instructions showing how to measure and what measurements to give, tables of sizes and other necessary information for all the various kinds of Wearing Apparel—Clothing, Working Garments, Hats, Gloves, Underwear and Hosiery. This page must not be used as an order blank but as a page for information only.

Measurements for Men's Suits or Overcoats and Boys' or Youths' Long Pants Suits or Overcoats.



Height	Weight	Age
COAT OR OVERCOAT		
Be sure to state suit or overcoat style number.		
Stand in your natural way, breathe regularly, and don't expand chest; also take everything bulky out of your pockets.		
BREAST —Around body at breast, close up under arms at 1, snug but not tight. Tape should be over shoulder blades at the back (measure over vest only).....		
Waist —All around body at waist at 2. Waist line is just above hip bones. Always feel sides for location of hip bones (measure over vest only).....		
Waist —All around body at waist at 2. Waist line is just above hip bones. Always feel sides for location of hip bones (measure over vest only).....		
Sleeve —Take sleeve measurements with your coat on. From middle of back at 3 to elbow at 4.....		
Sleeve —From middle of back at 3 to wrist joint at 5, giving full length of arm.....		
VEST.		
(These measurements must be taken over the vest.)		
BREAST —Around the body at breast, close up under arms at 1, snug but not tight. Tape should be over the shoulder blades at back (measure over vest only).....		
Waist —All around body at waist at 2. Waist line is just above hip bones. Always feel sides for location of hip bones (measure over vest only).....		
PANTS.		
(Now turn up your vest.)		
Now stand erect and draw pants waist up in the overcoat.....		
Waist —All around body at waist over pants at 4. Waist line is just above hip bones. Always feel sides for location of hip bones.....		
Inseam —From crotch up to heel seam of shoe at 8.....		

NECESSARY INFORMATION FOR BOYS' CLOTHING.

TWO-PIECE OR THREE-PIECE KNEE PANTS SUITS, OVERCOATS, LITTLE FELLOWS' SUITS OR OVERCOATS—Simply state age and say whether the boy is large, small or of average size for his age.

MEASUREMENTS FOR MEN'S AND YOUTHS' CLOTHING.

SUITS.	VESTS.	MACKINTOSHES, RUBBER COATS, HUNTING CLOTHING, DUCK, FUR AND LEATHER COATS AND OTHER WORKING COATS.
State all the measurements for coat, vest and pants as shown on the form to the left.	State breast and waist measurements.	State breast measurement.
State breast, waist and sleeve measurements.	State waist measurement and length of inseam.	In addition to the foregoing measurements specify state height, weight and age.
State breast, waist and sleeve measurements.	State waist measurement and length of inseam.	

MEASUREMENTS FOR MEN'S UNDERWEAR.

UNDERSHIRTS.	UNION SUITS.
State breast measure.	State breast measure; also measurement from center of right shoulder down the front through crotch and up the back around to starting point (center of right shoulder) thus giving trunk measure.
State waist measure.	

MEN'S SOCKS—State Size of Socks.

Size of shoe.....	5 1/2-6	6 1/2-7	7 1/2-8	8 1/2-9	9 1/2-10	10 1/2-11	11
Size of sock.....	5 1/2	6 1/2	7 1/2	8 1/2	9 1/2	10 1/2	11

MEASUREMENTS FOR MEN'S AND BOYS' HATS.

Measure your head as here illustrated and send us either this measurement in inches or compare the number of inches your head measures with this scale of hat sizes and send us the hat size you wear.

Hat Size	Head Circumference	Hat Size	Head Circumference
6 3/4	20 1/2	7 1/4	22 1/2
6 3/8	20	7 3/8	23
6 3/2	20 1/2	7 3/4	23 1/2
6 3/4	21	7 3/2	24

MEASUREMENTS FOR MEN'S OR LADIES' GLOVES.

HOLD HAND OUT FLAT WITH FINGERS TOUCHING, THUMB RAISED; draw tape close but not tight, as shown in illustration (do not include thumb). The number of inches that your hand measures around at the knuckles is the correct size of your gloves. ALWAYS STATE SIZE AND COLOR WANTED.

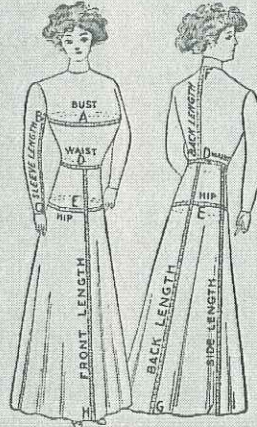
Sizes for gloves are as follows:

Ladies' Sizes in Fabric, Knitted Yarn and Fleece Lined Kid Gloves:	Men's Sizes, 6 1/2 to 7 1/4.
6, 6 1/2, 7, 7 1/2, 8, 8 1/2.	6 1/2, 6 3/4, 7, 7 1/4, 7 1/2, 8, 8 1/2, 8 3/4, 9, 9 1/2, 10, 10 1/2.

Measurement Form for Ladies' and Misses' Tailored Suits, Cloaks, Skirts, Dresses, Waists and Capes.

First, tie a tape or cord around your waist in order that you may properly locate the natural waist line. This is important.

Second, be sure that your tape line is accurate. Then measure over a tight fitting waist or blouse, making no allowance for seams, according to the following directions:



Height	Weight	Age
Measurements for Coat, Cloak, Waist, Dressing Sacque, Etc.		
BUST MEASURE —Measure all around body as per line marked A, over the fullest part of bust, under-neath arms and well up on the shoulder blades at back. Don't take this measure just across the front, but take it all around body.....		
WAIST MEASURE —Measure all around body at hips as per line marked B. Do not allow for lap or dip front.....		
HIP MEASURE —Measure all around body at hips as per line marked C. This line is about 4 inches below waist line. Be careful that tape does not slip up or down.....		
FRONT LENGTH OF SKIRT —Measure from waist line D down the front of skirt to H. This measurement should be taken from waist to within 2 or 3 inches from the floor for ladies' skirts, and 8 to 10 inches from the floor for misses' skirts. Do not take measure from waist line to the floor, as this makes the skirt entirely too long.....		
LENGTH OF SKIRT —Measure from waist line D down side of skirt to I.....		
BACK LENGTH OF SKIRT —Measure from waist line D down back of skirt to J.....		
SLEEVE LENGTH —Measure from armpit at B along inside sleeve 2 x m to wrist at C with arm held as shown in illustration.....		
LENGTH OF BACK —Measure from back of neck at F down back to waist line D.....		

IMPORTANT—Always observe the sizes we furnish. We can furnish only the sizes we specify on the various pages of wearing apparel.

This Page Must Not Be Used as an Order Blank but as a Page for Information Only.

MEASUREMENTS FOR LADIES' AND MISSES' CLOTHING.

SUITS.	COATS OR JACKETS (Cloak or Fur).	CAPE (Cloak or Fur).	SKIRTS.	Waists.	WRAPPERS.	NIGHTGOWNS.	CORSET COVERS.	DRESSING SACQUES, KIMONOS AND ROBES.	MUSLIN DRAWERS.	PETTICOATS AND UNDERSKIRTS.
State all the measurements in the form shown to the left.	State bust and waist measurements, sleeve length and length in back.	State bust measure and number of inches around neck.	State waist and hip measurements and length of skirt.	State bust measure.	State bust measure.	State bust measure.	State bust measure.	State bust measure.	State length and style desired when open and closed styles are wanted.	State length.

LADIES' AND MISSES' KNIT UNDERWEAR.

Size 4 for bust 32 inches.	Size 5 for bust 34 and 36 inches.	Size 6 for bust 38 and 40 inches.	Size 7 for bust 42 inches.	Size 8 for bust 44 inches.	Size 9 for bust 46 and 48 inches.
Size of shoe.....	1 and 2	3 and 4	5 and 6	7	8
Size of heel.....	1 1/2	2	2 1/2	3	3 1/2

NECESSARY MEASUREMENTS OR INFORMATION FOR GIRLS' CLOTHING.

COATS AND REEFERS.	SWEATERS.	DRAWERS.
State age and whether large or small for age; also state bust measure.	State age.	State age.
	State age.	Head the scale of sizes for each age on the dress pages and order accordingly.

CHILDREN'S AND MISSES' UNDERWEAR.

Size.	For Age.	Size.	For Age.	Size.	For Age.	Size.	For Age.
18	1 to 1 1/2	28	8 to 10	18	1 1/2 to 2	28	10 to 12
20	1 1/2 to 2	30	10 to 12	20	2 to 4	30	12 to 14
22	2 to 4	32	12 to 14	22	4 to 6	32	14 to 16
24	4 to 6	34	14 to 16	24	6 to 8	34	16 to 18
26	6 to 8	36	16 to 18	26	8 to 10	36	18 to 20

CHILDREN'S STOCKINGS—State Size of Stockings.

Size of shoe.....	4 1/2	5	5 1/2	6	6 1/2	7	7 1/2	8	8 1/2	9	9 1/2	10
Size of stocking.....	4 1/2	5	5 1/2	6	6 1/2	7	7 1/2	8	8 1/2	9	9 1/2	10

NECESSARY INFORMATION FOR INFANTS' CLOTHING.

CLOAKS.	BONNETS AND HOODS.
State age and length desired.	State age of child and state whether large or small head.

INFANTS' STOCKINGS—State Size of Stockings.

Size of shoe.....	1 1/2	2	2 1/2	3	3 1/2	4	4 1/2	5	5 1/2	6
Size of stocking.....	1 1/2	2	2 1/2	3	3 1/2	4	4 1/2	5	5 1/2	6

INFANTS' VESTS AND SHIRTS—State Size.

Size.	1	2	3	4	5	6	7
Length, inches.....	1	2	3	4	5	6	7
To fit infants, age.....	1 to 3 months	3 to 6 months	6 to 9 months	9 to 12 months	1 to 2 years	2 to 3 years	3 to 4 years

SEARS, ROEBUCK AND CO., CHICAGO, ILL. Our Grocery Business Grows Tremendously. Why? OUR Groceries Are DIFFERENT.

ORDER BLANK OF SEARS, ROEBUCK AND CO. CHICAGO

YOUR MONEY AND ANY TRANSPORTATION CHARGES YOU PAID WILL BE IMMEDIATELY RETURNED TO YOU FOR ANY GOODS NOT PERFECTLY SATISFACTORY.

STATE HOW YOU WANT GOODS SHIPPED BY PLACING AN X IN PROPER SQUARE BELOW.

OPEN MAIL Allow 1 cent an ounce extra for postage on orders to be sent by open mail.
 INSURED MAIL Allow 1 cent an ounce extra for postage, also an insurance fee of 5 cents for orders up to \$5.00 in value; 10 cents for orders amounting to over \$5.00 and under \$10.00, and 5 cents for each \$5.00 in value for orders amounting to over \$10.00. We guarantee safe delivery of all insured mail packages.
 REGISTERED MAIL Allow 1 cent an ounce extra for postage and 10 cents additional for registration fee.
 EXPRESS **FREIGHT** **PREPAID FREIGHT**
Read Explanation Below.

IF THERE IS NO FREIGHT AGENT at your shipping point you must send money to prepay freight charges. If there is an agent you can pay the freight when shipment reaches you. It is only necessary to prepay when there is no agent at your station.
HOW TO SEND MONEY. The best and safest way to send money is by Postoffice Money Order, Express Money Order, Bank Draft or Check.
DO NOT SEND COIN: It is liable to break through the envelope and be lost. If absolutely necessary to send coin **BE SURE** to wrap it in strong paper before putting it in the envelope, and then send by **REGISTERED MAIL**.
SEE THE INTRODUCTORY PAGES of our big General Catalog for information about freight, express and postage rates, how to send money, methods of shipment, and other information.

DO NOT WRITE IN THIS SPACE

SIGN FULL NAME _____ DATE _____ 191__

NAME _____

POSTOFFICE _____

R. F. D. No. _____ STATE _____

P. O. BOX No. _____ STREET AND No. _____

GIVE SHIPPING POINT IF DIFFERENT FROM POSTOFFICE.

NAME _____ (Give name here only when shipment is to be made to another party. If to yourself leave space blank.)

SHIPPING POINT _____

COUNTY _____ STATE _____

RAILROAD CO. _____ EXPRESS CO. _____

STATE TOTAL AMOUNT OF MONEY SENT WITH THIS ORDER	DOLLARS	CENTS

Please give name of HEAD OF HOUSEHOLD to avoid sending more than one catalog to the same family.

NAME _____

Number of Article in Catalog	Quantity Desired	NAME OF ARTICLE WANTED	Sizes, Colors, Etc.	Price of Each, or per Dozen	Extend Totals Here and Then Add This Column
			SIZES, COLORS, ETC.		
			SIZES, COLORS, ETC.		
			SIZES, COLORS, ETC.		
			SIZES, COLORS, ETC.		
			SIZES, COLORS, ETC.		
			SIZES, COLORS, ETC.		
			SIZES, COLORS, ETC.		
			SIZES, COLORS, ETC.		
			SIZES, COLORS, ETC.		
			SIZES, COLORS, ETC.		
			SIZES, COLORS, ETC.		
			SIZES, COLORS, ETC.		
			SIZES, COLORS, ETC.		
			SIZES, COLORS, ETC.		
			SIZES, COLORS, ETC.		
			SIZES, COLORS, ETC.		
			SIZES, COLORS, ETC.		
			SIZES, COLORS, ETC.		
			SIZES, COLORS, ETC.		
			SIZES, COLORS, ETC.		
			SIZES, COLORS, ETC.		
			SIZES, COLORS, ETC.		
			SIZES, COLORS, ETC.		

IF YOU DO NOT USE THIS ORDER BLANK AT ONCE, PRESERVE IT FOR FUTURE USE.
HAVE YOU STATED SIZE AND COLOR?
IF YOU DO NOT USE THIS ORDER BLANK AT ONCE, PRESERVE IT FOR FUTURE USE.

Brief Index of Lines of Merchandise

FOR ITEMIZED INDEX SEE FOLLOWING PAGES 2 TO 16

If you wish to refer to any particular line of merchandise use the brief alphabetically arranged index on this page. It is usually easy to find any article after locating the general

line, as the headings, illustrations and descriptions readily direct you to the various items you want. To find any particular item refer to complete itemized index on following pages 2 to 16.

PAGE	PAGE	PAGE	PAGE
Acetylene Gas Plants.....1178	Cooking and Kitchen Utensils.....416, 1022-1030	Infants' Wear.....81, 230-242, 244, 255, 365, 377	Rubber Footwear.....391-399
Agricultural Implements.....514-518, 538, 939, 1031-1051, 1051-1057, 1088-1123, 1134-1137, 1131-1134, 1174-1180, 1184-1191, 1211-1212	Corsets, Hose Supporters, Belts, Hand Bags, Purse, 97, 130-135, 833	Invalid Chairs.....513	Rubber Hose.....1031, 1061
Amputation.....909-912	Cream Separators.....1031, 1131-1144	Irrigation Outfits.....1179	Rugs and Carpets.....122-143
Athletic Goods.....202, 375, 394, 920-925	Cutlery.....816-853, 861-874	Jewelry.....776-845	Saddles.....1215, 1319-1222
Automobiles.....1213	Cutters, Sleighs—Write for Prices.	Laces, Embroidery, Ribbons.....80-85, 93-95	Skates, Fireproof.....1010-1011
Automobile Clothing and Furnishings.....90-93, 121, 139, 198, 202, 315, 321, 345	Dairy Supplies.....416, 769, 1031, 1131-1144	Lace Curtains, Drapery.....411-463, 467-475	Scales, Household and Counter.....1030
Automobile Sundries.....547-550, 771-772, 875, 1153, 1231	Diamonds.....825-830	Lamps.....411-463, 467-475	Scales, Platform, Wagon.....1126-1127
Babies' Supplies.....91, 230-242, 244, 255, 365, 377	Draperies.....101-104, 414-462, 467-470	Laundry Supplies.....418-421	Scarfs and Veils.....50-92, 203
Baby Carriages.....652-656	Drawing Instruments and Materials.....764-765	Lighting Rods.....772, 992-993, 1013-1020	School Furniture.....1130
Band Instruments.....702-709	Drugs and Toilet Articles.....33-36, 41, 49, 62-89, 92	Linings, Dress.....1108	Shawls.....657-684
Barbers' Supplies.....46, 290, 485-490, 492-495, 870-874	Dry Goods.....177-195, 503-512	Linoleum, Oilcloth.....32, 410-412	Sheep Shearing Machines.....518
Baseball and Football Goods.....922-925	Duck Clothing, Men's—Write for Working Clothing Catalog.	Lumber.....1239	Shoes, Boots.....35, 56, 58, 72-78, 92-93
Bathers' Supplies.....202, 925	Electrical Goods.....420, 476, 762-763, 770-775, 1017, 1019	Lumbermen's Supplies.....253, 396, 1054-1055, 1058-1059	Silks.....35, 56, 58, 72-78, 92-93
Beds, Mattresses, Springs, Pillows.....604-607, 619-635, 937	Embroideries, Fancy Goods and Needlework.....81-89, 94-95, 97-105	Mantels, Consoles, Fireplaces.....1145	Silverware.....683, 813, 816-858
Bedding—Blankets, Bedspreads, Comforters, Quilts, Sheets, Pillow Cases.....29, 31-32, 41, 50-51, 101-102, 457, 473-475	Engines, Gasoline, Farm, Shop.....1184-1191	Masons' and Bricklayers' Tools.....1036, 1056, 1079	Sleighs, Outfitters—Write for Prices.
Bee Keepers' Supplies.....1123	Engines, Gasoline, Marine.....835	Mill and Factory Supplies.....547-550, 1058-1061, 1114, 1181-1191	Sporting Goods.....889-911
Bells, Door.....171, 1082-1083	Engines, Steam—Write for Prices.	Mill Work.....1145-1153	Spraying Apparatus.....443, 538, 1173-1180
Bells, Schoolhouse, Church.....1114	Fancy Goods, Art Needle Work.....91-95, 97-105	Millinery.....90-91, 93, 107-127	Spraying Materials.....470, 482, 484
Bells, Stock and Farm.....1033, 1231	Farm and Garden Tools.....514, 517-518, 1033-1041, 1051-1057, 1231-1232	Monuments, Tombstones.....1125	Stairways.....956-958
Bicycles and Supplies.....877-888	Fencing Wire.....1118-1122, 1124	Motocycles.....875	Stove Repairs for our Stoves—Write for Stove Repair Price List.
Binder Twine. (Write for Binder Twine Price List.)	Fireless Cookers.....1022	Musical Instruments.....685-709, 714-733, 738	Stamp Pullers.....1114
Blacksmiths' Tools and Supplies.....1040-1043, 1057, 1059, 1065-1073	Fishing Tackle.....928-934, 936-937	Muslin Wear, Ladies, Girls' and Infants'.....203-213, 223-229, 236-239, 242	Sweaters.....330
Boats.....934	Floor Tile.....1145	Neckwear.....395, 542-546, 777, 1036, 1050-1057, 1062-1087, 1172-1173, 1231-1232	Swimming Goods.....202, 925
Boats and Stationery.....942-953	Fountain Pens, Cheap.....957	Notions.....91-95, 123, 331-335	Table Covers and Linens.....37-13, 102-101, 472
Boats, Shoes.....352-393, 921	Frames, Men's, Women's and Children's—Write for Fur Catalog.	Office Furniture and Equipment.....813-845, 859-860, 956-958, 1019-1011	Talking Machines, Records.....732-738
Buggies and Surreys.....1192-1210	Furnishing Goods, Men's and Boys'.....253, 255-262, 322-346	Optical Goods.....763, 766-769	Telephone Instruments.....775
Builders' Hardware.....1050-1053, 1153-1159	Furniture.....561-651, 927, 937, 1130	Paints, Oils, Varnishes, Patenting and Paperhanging Supplies.....525-550	Telephone Supplies.....710-711
Building Materials, Mill Work, Plans, Etc.....1145-1155, 1233-1239	Gas and Electric Fixtures.....429, 476	Photographs, Records.....732-738	Telescopes.....707-708
Butchers' Supplies.....290, 855-896, 1023, 1028, 1030, 1112, 1210	Glassware.....309, 414-415, 418-421, 568	Photographic Goods.....739-761, 939	Tents, Awnings and Camp Supplies.....919, 927, 937-939
Cameras and Photo Supplies.....739-761, 939	Gloves, Mittens.....138-140, 339, 341-346	Pianos and Organs.....714-731	Thermometers, Compasses.....769
Carpenters' Tools and Supplies.....1074-1087	Groceries.....1128-1129	Pictures.....496	Tile, Floor and Wall.....1115
Carpets and Rugs.....422-443	Guns, Rifles, Revolvers.....889-909	Pipes, Smoking.....940-941	Tinware.....1019-1020, 1022, 1027-1031
Cement Block Machines, Molds and Cement Workers' Tools.....1056, 1160-1161	Hair Goods, Ornaments.....128-129, 136-137, 491, 834-835, 837	Plans, Building.....1116-1117	Toilet Ware.....417, 1031, 1024-1029
Children's Headwear.....112, 116, 127, 228, 230-231, 297, 305, 310, 339	Hammocks, Swings.....568, 926-927	Plumbing Supplies.....1102-1178, 1182-1183	Tombstones, Monuments.....1125
China, Crockery, Glassware.....399-421	Handkerchiefs.....96, 333, 338	Portable Houses.....1163	Traps and Traps.....814-815
Clocks.....695, 772, 859-863	Hardware.....864-874, 1012-1087	Post Card Projectors.....702-763	Trunks, Traveling Bags.....817-851
Clothing, Boys', Youths'.....291-312, 318-318, 913	Harness, Saddles, Horse Covers, Lap Robes, Saddlery and Stable Supplies.....618, 1214-1237	Poultry Raisers' Supplies.....180, 515, 1032-1033, 1114-1115, 1120	Trusses.....510-511
Clothing, Hunting.....917-918	Hats, Caps, Men's and Boys'.....112, 297, 305, 310, 339-343	Pumps.....1174-1180	Umbrellas.....166
Clothing, Ladies', Girls' and Infants' Ready to Wear.....142-242	Hay Tools.....1035, 1037, 1105	Pyrography.....503	Underwear, Knif.....211-249, 259-262
Clothing, Ladies' Made to Order.....141	Heating Plants, Steam, Hot Water, Warm Air.....1181-1183	Raincoats, Ladies', Girls'.....189, 158	Underwear, Muslin, Petticoats, Aprons, House Dresses, Women's, Girls', Infants'.....203-221, 226-229, 236-242
Clothing, Men's Made to Order.....263-264	Horse Clipping Machines.....518	Raincoats, Men's.....286-287, 319-321	Vacuum Cleaners.....1021
Clothing, Men's Ready Made.....265-290, 313-321	Hose, Rubber.....1034, 1061	Raincoats, Young Men's, Boys'.....318	Vehicles, Buggies, Wagons.....1192-1212
Clothing, Men's Working.....289-290, 316-318, 320-321	Hosiery.....250-253, 395	Razors and Shaving Supplies.....46, 290, 485-490, 492-495, 870-874	Velvet and Velvetens.....79
	Hospital and Hotel Supplies.....31, 37-43, 45-47, 399, 622-635	Records, Photograph.....731-738	Veterinary Goods.....514-517
	Incubators and Brooders.....1115	Refrigerators, Ice Chests.....571-575	Wagons, Business, Farm and Spring.....1209-1212
		Ribbons.....93	Wagons, Toy.....876
		Road Orders, Scrapers.....1113	Wagon and Carriage Hardware.....1011-1049
		Roofing.....536, 1152, 1164-1169	Wall Paper.....519-524
			Washing Machines.....1013-1017
			Watches and Chains.....776-814
			Water Supply Outfits.....1116-1117, 1178-1179, 1189
			Windmills and Tanks.....1116-1117
			Window Shades.....464-466
			Wire Fencing.....1118-1122, 1124
			Wood Working Machinery.....1059, 1051, 1085
			Wringers, Clothes.....1018

2c TO 12c ITEMS ARE ON PAGES 19 TO 28

SIMPLE RULES FOR ORDERING

TO FIND WHAT YOU WANT TO BUY, refer to Brief Index above or to Itemized Index on pages 2 to 16. USE OUR ORDER BLANK, IF YOU HAVE ONE. If you haven't one, use any kind of plain paper. TELL US IN YOUR OWN WAY WHAT YOU WANT, always giving, if possible, the catalog number of each article, the price, and also the size and color, where these are necessary. ENCLOSE IN THE LETTER the proper amount of money in the form of a postoffice money order, which you can buy at the postoffice, or an express money order, which you can buy from any express agent, or a draft, which you can buy at any bank, or you can put the money itself in a letter and take it to the postoffice and tell your postmaster that you want him to register it to us. If you have a checking account Do not fail to give size, color, weight, etc., if required, when writing your order.

at a bank, you may, if you prefer, send us your personal check. IF YOU LIVE ON A RURAL MAIL ROUTE, just give the letter and the money to the mail carrier and ask him to buy a money order at the postoffice for you and to put it in the envelope with your order and mail it to us. DON'T BE AFRAID YOU WILL MAKE A MISTAKE IN MAKING OUT THE ORDER. We receive hundreds of orders every day from young and old, who never before sent away orders for goods. We are accustomed to handling all kinds of orders. WRITE US IN YOUR OWN WAY, IN ANY LANGUAGE. We have translators who read all languages. Don't worry if you think your writing is poor. We will be able to read it and your goods will be promptly sent.

IF THERE IS ANY OTHER INFORMATION YOU DESIRE, such as methods of shipping, postage, express or freight rates, you will undoubtedly find it by referring to pages 17 and 18 of this catalog.

Visit Us When You Come to Chicago. We'll Show You Through Our Buildings. SEARS, ROEBUCK AND CO., CHICAGO, ILL. 31

PAGE		PAGE		PAGE		PAGE	
470	Blacksmiths	1077	Bobbin Cases	584	Boys' Saddles	1019	1201
470	Blacksmiths	1077	Bobbin Cases	584	Boys' Saddles	1019	1201
471	Blacksmiths	1077	Bobbin Cases	584	Boys' Saddles	1019	1201
472	Blacksmiths	1077	Bobbin Cases	584	Boys' Saddles	1019	1201
473	Blacksmiths	1077	Bobbin Cases	584	Boys' Saddles	1019	1201
474	Blacksmiths	1077	Bobbin Cases	584	Boys' Saddles	1019	1201
475	Blacksmiths	1077	Bobbin Cases	584	Boys' Saddles	1019	1201
476	Blacksmiths	1077	Bobbin Cases	584	Boys' Saddles	1019	1201
477	Blacksmiths	1077	Bobbin Cases	584	Boys' Saddles	1019	1201
478	Blacksmiths	1077	Bobbin Cases	584	Boys' Saddles	1019	1201
479	Blacksmiths	1077	Bobbin Cases	584	Boys' Saddles	1019	1201
480	Blacksmiths	1077	Bobbin Cases	584	Boys' Saddles	1019	1201
481	Blacksmiths	1077	Bobbin Cases	584	Boys' Saddles	1019	1201
482	Blacksmiths	1077	Bobbin Cases	584	Boys' Saddles	1019	1201
483	Blacksmiths	1077	Bobbin Cases	584	Boys' Saddles	1019	1201
484	Blacksmiths	1077	Bobbin Cases	584	Boys' Saddles	1019	1201
485	Blacksmiths	1077	Bobbin Cases	584	Boys' Saddles	1019	1201
486	Blacksmiths	1077	Bobbin Cases	584	Boys' Saddles	1019	1201
487	Blacksmiths	1077	Bobbin Cases	584	Boys' Saddles	1019	1201
488	Blacksmiths	1077	Bobbin Cases	584	Boys' Saddles	1019	1201
489	Blacksmiths	1077	Bobbin Cases	584	Boys' Saddles	1019	1201
490	Blacksmiths	1077	Bobbin Cases	584	Boys' Saddles	1019	1201
491	Blacksmiths	1077	Bobbin Cases	584	Boys' Saddles	1019	1201
492	Blacksmiths	1077	Bobbin Cases	584	Boys' Saddles	1019	1201
493	Blacksmiths	1077	Bobbin Cases	584	Boys' Saddles	1019	1201
494	Blacksmiths	1077	Bobbin Cases	584	Boys' Saddles	1019	1201
495	Blacksmiths	1077	Bobbin Cases	584	Boys' Saddles	1019	1201
496	Blacksmiths	1077	Bobbin Cases	584	Boys' Saddles	1019	1201
497	Blacksmiths	1077	Bobbin Cases	584	Boys' Saddles	1019	1201
498	Blacksmiths	1077	Bobbin Cases	584	Boys' Saddles	1019	1201
499	Blacksmiths	1077	Bobbin Cases	584	Boys' Saddles	1019	1201
500	Blacksmiths	1077	Bobbin Cases	584	Boys' Saddles	1019	1201

MOSQUITO AND BEE HEAD NET
No. 6H9100 To be worn over the hat or cap. Made of good material. Fitted with four light steel springs, bottom weighted with shot so as to set close to shoulders. Can be folded up and put in an ordinary hat pocket. Shipping weight, 5 ounces. Price, complete, 35c.

Kenny's Mosquito Chaser
An effective, harmless, pleasant smelling preventive against mosquitoes and other insects. Made of pure ingredients free from poisons or acids, according to a government formula. A few drops on the hands and face or on a towel hung over the head of bed will keep away mosquitoes and other insects. The most effective preparation of its kind on the market, sold everywhere by all. Put up in 1-ounce bottles. Shipping weight, 5 ounces. No. 6H9108 Kenny's Malaria Chaser. Price, 1-ounce bottle, 1.00

Keystone Fish Stringer
No. 6H9036 Brass needle at one end to string fish and a ring at the other end to loop the first fish. The fish stringer is 6 feet long. Shipping weight, 4 ounces. Price, complete, 1.10

Chain Fish Stringer
Stronglink, heavy metal plated, strong and durable. Will hold 100 pounds of fish and not break. Length, 4 feet. Shipping weight, 3 ounces. No. 6H9038 Price, 9c

Minnow Net
No. 6H9091 Solid round mesh, 14x14 inches, fitted with 20-inch net, top mesh 1/2-inch, bottom mesh 1/4-inch. Can be used for other landing large fish or as minnow net. Fitted with 4-foot twisted handle. Shipping weight, 27 ounces. Price, complete, 68c

Steel Pliers
No. 6H9101 Length, 4 inches. Shipping weight, 3 ounces. Price, 9c

Acino Spring Balance
No. 6H9150 Weights from 1 to 15 pounds. Made of brass with yellow lacquer. Shipping weight, 2 ounces. Price, 2.10

The Superior Folding Net
Complete with net and handle. Can be taken apart in a moment's time. No parts to get lost. Put up in neat, partitioned cloth bag.
No. 6H9095 No. 1 Edge, 12x14x18 inches, mounted with a 20-inch square bottom. Shipping weight, 20 ounces. Price, 11.24

Trout Baskets With Metal Clasp
Our baskets are made from select French willow, very strong and light.
No. 6H9103 Capacity, 10 pounds, measuring 7x14 inches on back. Shipping weight, 13 ounces. Price, .95c
No. 6H9104 Capacity, 12 pounds, measuring 8x14 inches on back. Shipping weight, 20 ounces. Price, 1.12

Patent Trout Basket Strap
No. 6H9109 The best made; made of walking and leather; leaves the arms free. Shipping weight, 4 ounces. Price, 20c

Our Keep Alive Nets
No. 6H9088 These nets are made with wire hoops and are collapsible and take up very little room. As excellent thing to keep fish alive and fresh when caught. Shipping weight, 14 to 18 ounces.
Price, 10 inches diameter, 25c
Price, 12 inches diameter, 30c
Price, 14 inches diameter, 35c

Foard's No. 2 Disgorger
No. 6H9146 Simple end, for extracting fish hooks when too far in mouth of fish and cannot be taken out by hand. Shipping weight, 2 ounces. Price, 6c
No. 6H9147 Double End Aluminum Disgorger. Very light, will not rust. Shipping weight, 3 ounces. Price, 15c

Minnow Dip Nets
No. 6H9089 Made of No. 20 six-ply Sea Island cotton, 3/16-inch mesh bottom, 3/8-inch mesh top; superior in strength and durability to linen nets and for less expensive. Price are for nets only; do not include frames. Shipping weight, 2 to 6 ounces.
16 inches deep, 17c 20 inches deep, \$0.41
18 inches deep, 21c 22 inches deep, .50
24 inches deep, 25c 28 inches deep, .65
34 inches deep, 31c 40 inches deep, 1.20

Linen Landing Nets
No. 6H9090 Price is for netting only, and does not include frame. Made in 31-inch mesh only. For landing large fish. Shipping weight, 2 ounces.
Depth..... 20 24 30
Price..... 15c 20c 30c

Folding Catch All Minnow Net
No. 6H9092 This net has a steel frame 2 1/2 feet square. This frame can be folded in any direction's that when folded occupies a space 2 1/2 feet long by 2 inches square. The net itself is heavy good mesh netting, 3/16 inch mesh, reinforced at corners. Puts with a brass ring at each corner to attach to frame. This net is put up with handle; frame and rope can be attached. Shipping weight, 28 ounces. Price, complete with handle, 95c

THE CHARLES FISH TRAP
\$1.60 STANDARD SIZE
CARRIED IN STOCK SHIPPED PROMPTLY
No. 6H9756 This Fish Trap is made on the order of a fyke net, and of extra heavy woven netting, 3/16 inch square mesh, the loop at mouth of trap is 14 inches in diameter, the body of trap is 3 feet long, the wings measure 18 feet from end to end. This net can be set in any stream with stakes, and is an excellent trap for capturing minnows and small fish. Shipping weight, 30 ounces. Price, complete with handle, \$1.60

Superior Cotton Trot Line
Cotton Trot Lines, to use as set lines, top and bottom lines on small nets; in foot banks, air launch connected or set. Best quality. Sold in any quantity at rates. Mention number when ordering.
No. 6H9900 Superior Cotton Trot Line. Price, per doz. Black or 600 Ft. 10.29
No. 6H9901 12 oz. 10.29
No. 6H9902 12 oz. 10.29
No. 6H9903 12 oz. 10.29
No. 6H9904 12 oz. 10.29
No. 6H9905 12 oz. 10.29
No. 6H9906 12 oz. 10.29
No. 6H9907 12 oz. 10.29
No. 6H9908 12 oz. 10.29
No. 6H9909 12 oz. 10.29
No. 6H9910 12 oz. 10.29
No. 12 is 3/16 inch diameter.

Superior Square Cotton Dip Net
No. 6H9153 These nets are made with 1/2 inch square mesh of No. 20 cotton. No frame comes with them. Give size wanted. These are carried in stock and can be shipped promptly.
Price, per doz. 10.29
4x4 feet, square shape, 10.29
4x5 feet, square shape, 10.29
4x6 feet, square shape, 10.29
4x8 feet, square shape, 10.29
4x12 feet, square shape, 10.29
4x16 feet, square shape, 10.29

Set Line Snaps
No. 6H9153 These are made with 1/2 inch square mesh of No. 20 cotton. No frame comes with them. Give size wanted. These are carried in stock and can be shipped promptly.
Price, per doz. 10.29

BOATS AND SUPPLIES. Note—Freight Rate on Boats Is Four Times First Class.

Flat Bottom Fishing Boats.
The best fishing boats made. Absolutely safe, comfortable and easily managed. Made of selected seasoned material by expert boat builders. These boats are made for us under contract and are sold by us exclusively. There are several that bottom beam on the market, but we claim ours are far superior in design, workmanship and material. They are made of steel. The sides are made of one-piece 3/4-inch cypress, oak stem, bottom boards laid crosswise, caulked with cotton. Keel strip of yellow pine, thoroughly fastened through each cross string. The gunwale, cleats and uprights are of yellow pine or spruce. Inside of boat is finished with two coats of slate color lead paint, outside with two coats of the best green marine paint. Fittings: One pair copper tipped oars, fitted with oak plates and North River carlocks. The 14-foot, 18-foot and 20-foot boats are fitted with one pair of carlocks and two pair of sockets. Shipped from factory in Chicago.

Catalog No.	Length, Feet	Width, Beam, Inches	Height, Inches	No. Seats	Weight, Pounds	Price
6H9213 1/2	12	40	15	3	160	\$16.00
6H9214 1/2	14	42	15	4	170	18.00
6H9215 1/2	15	44	15	4	180	19.25
6H9216 1/2	16	44	15	4	205	18.48

15-Foot Smooth Skin Double Pointer Boat.
A handsome, safe, easy rowing boat at a very low price. The body of this boat is made of narrow strips of cedar or cypress, edge fastened, making a smooth surface inside and out. The ribs are of selected oak, steam bent. The floor boards are of cedar or cypress, steam fastened. Painted inside with two coats of slate color lead paint; outside, with two coats of best green marine paint. The gunwale, uprights, breast hooks and seats are fitted and finished with three coats of the best marine varnish. Fittings: One pair of selected copper tipped varnished oars, fitted with oak plates and North River carlocks, two pair galvanized sockets and galvanized stem band, painter ring with painter. A high grade, easy rowing boat. Could not be purchased elsewhere for less than \$30.00. Shipped from factory in Chicago.

Catalog No.	Length, Feet	Width, Beam, Inches	No. Seats	Weight, Pounds	Price
6H9206 1/2	15	42	4	185	\$22.75

Extra pair oars, same as furnished with above boat, complete with attached carlocks, 1.50

Square Stern Clinker Row Boat.
None better. Made of the best material by expert builders. A strong, handsome, easy rowing boat of white pine, stem, keel and transom of oak, seasoned oak. The bottom is of cypress and the plating or siding, of cedar; lap strakes thoroughly fitted and secured; ribs of oak steam bent to place; floor boards of cedar or cypress, steam fastened. Finish: The inside painted with three coats of the best lead paint; outside, with three coats of marine paint, except three top strakes, which have three coats of varnish. The gunwale, uprights, breast hooks, seats and floor are fitted and finished with three coats of the best marine varnish. Fittings: One pair of varnished copper tipped oars, fitted with oak plates, galvanized North River carlocks, two pair galvanized sockets, galvanized head seat braces, painter ring and pedaler. Shipped from factory in Chicago.

Catalog No.	Length, Feet	Width, Beam, Inches	No. Seats	Weight, Pounds	Price
6H9217 1/2	14	42	4	175	\$26.00
6H9218 1/2	16	44	4	179	\$30.48

Extra pair oars, same as furnished with above boat, with carlocks complete, 3.50

Northern Fir Copper Tipped Oars.
They weigh but little more than a spruce, have greater uniform strength and are far lighter than ash. They are guaranteed to be selected straight grain, well turned and finished. One pair of 6-foot oars weighs about 5 pounds and a pair of 8-foot oars about 7 pounds. The length given is the length of each oar.
No. 6H9308 1/2 Length given is the length of each oar.
Length..... 6 ft. 8 1/2 ft. 7 ft. 8 ft. 8 1/2 ft. 9 ft.
Price, per pair, .22c 98c \$1.07 \$1.14 \$1.22 \$1.30

Spruce Paddle, 90 Cents.
No. 6H9314 1/2 Single, straight grained, first made. Weight, 1 1/2 pounds. Price, each, 90c
Northern fir copper tipped push paddles, about 10 feet long, finely varnished; properly shaped ball end. Weight, 3 1/2 pounds. Shipping weight, about 4 pounds.
No. 6H9316 Price, 1.20

Oar Plates.
Will double the serviceability of your oars and prevent lock pins from wearing large holes in the oars. Stamped from heavy galvanized steel, galvanized and shaped to fit the oar. Easily attached with screws. Weight, per set of four, about 10 ounces.
No. 6H9228 Oar Plates. Price, per set of four plates 1.50

Copper Tipped Ash Oars.
Our Ash Oars are made of the best selected straight grain stock. We do not handle second, or what is known as culled, we handle only selected ones. One pair of 6-foot oars weighs about 10 pounds. The length given is the length of each oar.
No. 6H9311 1/2 Copper Tipped.
Length..... 6 ft. 7 ft. 8 ft. 8 1/2 ft. 9 ft.
Price, per pair, \$1.06 \$1.28 \$1.42 \$1.50

Oarlocks.
No. 6H9424 Galvanized malleable iron, 2 inches between horns. Weight, per pair, about 1 1/2 pounds.
Price, per pair, 1.50

Petro Pitch, 89 Cents.
No. 6H10461 An excellent calling for boats, canoes, launches, tanks and troughs. Far superior to oakum, tar or ordinary pitch. Simple to use; simply pour into the seams or openings and allow to dry. Shipping weight, 2 1/2 pounds. Price, per quart, 89c

Selected Copper Tipped Spruce Oars.
No. 6H9313 1/2 Lighter than ash oars and very strong; copper tipped.
Weight, pounds..... 3 1/2 5 1/2 6 1/2
Length, feet..... 6 7 8
Price, per pair, \$1.12 \$1.32 \$1.48

Safety Oarlocks, 32 Cents.
No. 6H9426 Fitted with a spring, which with the shock of the horns makes it impossible to pull the horns out of the socket accidentally. Can be used with or without pin.
Made of galvanized malleable iron, 2 inches between horns. Weight, per pair, 2 pounds. Price, per pair, 32c

Life Preserver.
No. 6H9420 1/2 Life made of sour milk curd; to be worn around body. One of the best on the market; safe and durable. The government inspection stamp on each one. Weight 7 pounds. Price, 3.10

934 SEARS, ROEBUCK AND CO., CHICAGO, ILL. Our New Line of Imported Film Cameras at Remarkably Low Prices Demands Attention

Fit Your Boat With a Motorgo

THIRTY DAYS' TRIAL—GUARANTEED FOR LIFE

Motorgo Marine Engines have attained a nation wide reputation for their simplicity, reliability and power.

We guarantee the Motorgo Marine Engines to be equal in every way to any marine engine you can buy regardless of make or price.

There are other good marine engines for sale, but none better, and those that are not to the Motorgo will cost you twice our price.

The material, workmanship, finish and equipment on the Motorgo Marine Engines are of high grade in every respect. We defy any manufacturer to produce a better engine at any price.

Motorgo Marine Engines develop more than their rated horse power and will give you as much, if not more, speed in your boat than any marine engine of equal rating.

Buy your marine engine where you know you will be treated properly. We live up to our guarantee and trial offer to the letter.

What We Guarantee

We guarantee every Motorgo Marine Engine to be absolutely perfect in every respect and to be equal in every way to any marine engine you can buy, material, construction, equipment, power and finish considered. We will replace at any time any part giving out due to defect in material or workmanship. We guarantee that you will be entirely satisfied with your purchase, or if you are not, we will send you back your money and any freight charges you have paid.

Buy a Motorgo Marine Engine in Your Boat Thirty Days at Our Expense

This is no idle offer just to get your order but is a frank statement of the confidence we have in the Motorgo Marine Engines. We only ask that you give the Motorgo a chance to prove its worth to you. Send us your order with the money for the size you want and we will ship the engine immediately. You can put it in your boat, try it thirty days before you decide to keep it. If you don't want it, we don't want you to keep it. Compare the engine with others in your neighborhood as to material, construction, power, equipment and finish. If you do not feel that the Motorgo is as good, if not better, than any other marine engine on the market, regardless of price, if you are not perfectly satisfied in every way, you may return the engine and we will send you back every dollar paid out, the price of the engine and freight charges.

What We Furnish With Motorgo Marine Engines

The 2½-horse power engines are equipped with Lankehlmer mixing valve; the 3, 5, 6, 8 and 12-horse power engines with Schebler carburetor. Each engine is furnished with oiler, grease cups, drain cock for cylinder, priming cups, inspection port, crank case, thrust bearing, upright gear timer and plunger pump (except the 2-horse power, which has lever timer; and the 12-horse power, which has a gear driven pump). Each engine is furnished with spark coil and spark plugs, wiring with terminals, fire dry cable with connectors, switch, expansion chamber, 6 feet of shafting, two-blade bronze speed propeller (woodless if desired), bronze stuffing box, one lb. of cylinder oil, one box of grease and complete book of instructions.

We do not recommend or guarantee these engines for stationary work, as they are designed for use in a boat. If purchased for stationary work we cannot accept their return if they do not prove satisfactory.

Horse Power	Bore, Inches	Stroke, Inches	Speed, R. P. M.	Crank Shaft, Inches	Propeller Shaft, Inches	Propeller Diameter, Inches	Blades	Pitch, Inches	Actual Weight, Pounds	Shipping Weight, Pounds
2½	3¼	3¼	800	1¼	¾	9	2	12	110	185
3	4	4	800	1½	¾	9	2	14	109	240
4	4	4	800	1½	¾	10	2	14	200	230
5	3½	3½	800	1½	¾	10	2	14	160	235
6	3½	3½	800	1½	¾	10	2	14	160	235
8	4	4	800	1½	¾	12	2	16	215	325
12	4½	4½	800	1½	¾	16	2	24	320	450

STAND-BY MULTIPLE BATTERY.

Moisture Proof, Cannot Short Circuit, Perfect Ignition.

We are at last able to offer you a battery that will give you perfect ignition, maintaining ignition enables almost entirely. We recommend its use with Motorgo Marine Engines. This battery consists of ten dry cells completely covered with paraffin, enclosed in a strong wooden box; special seating process protects the terminals, holds the connections securely and, as the battery is moisture proof, there is absolutely no chance for short circuit. One of these batteries could last you at least a year and will wear from two to five sets of ordinary batteries.

Shipped from factory in Southern Michigan.
 No. 11H256 Stand-By Multiple Battery only. Weight, 25 pounds. \$4.00
 No. 11H256B Stand-By Multiple Battery with any Motorgo in place of regular battery, add to the price of the \$3.30

MOTORGEO REVERSE GEAR.

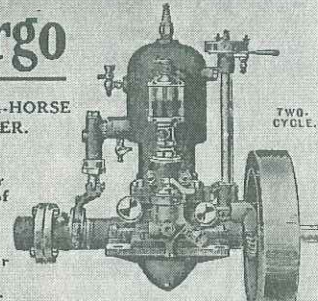
A reverse gear is a great convenience in operating a motor boat, as it gives you perfect control with quick results.

We have been handling this gear for four years and every one who has proven absolutely satisfactory. Shipped on thirty days' trial, covered by our binding guarantee, a perfectly reliable reverse gear, costing you only from \$8.00 to \$16.00. We are sure that you will get a better service than the Motorgo regardless of make or price.

Shipped from factory in Southern Michigan.
 No. 11H4720 For marine engines up to 5-horse power. Weight, 10 pounds. \$12.00
 No. 11H4725 For marine engines from 8 to 15-horse power. Weight, 10 pounds. \$17.00
 No. 11H4726 For marine engines from 15 to 30-horse power. Weight, 16 pounds. \$35.00
 No. 11H4727 Couplings for any of the above gears. \$2.00
 NOTE—In ordering couplings for engine you must be sure and give us also of engine shaft and size of propeller shaft.

2½ AND 4-HORSE POWER.

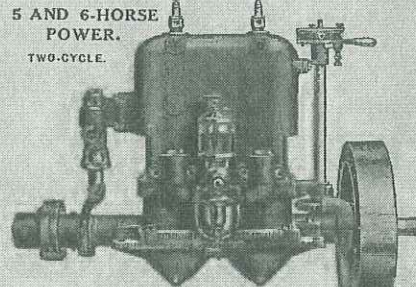
Schebler carburetor in place of mixing valve on 2½-horsepower engine, add \$5.00.



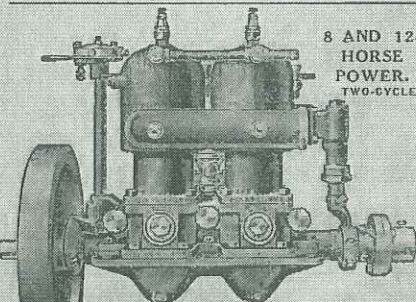
No.	Engine Description	FRESH WATER	SALT WATER
No. 11H3030	2½-Horse Power Engine, with mixing valve and full equipment. Price.	\$44.35	\$47.15
No. 11H3031	2½-Horse Power Engine, with mixing valve and full equipment, except the propeller, propeller shaft and stuffing box. Price.		41.85
No. 11H3036	4-Horse Power Engine, with Schebler carburetor and full equipment. Price.	\$63.95	\$67.75
No. 11H3037	4-Horse Power Engine, with Schebler carburetor and full equipment, except the propeller, propeller shaft and stuffing box. Price.		61.25

5 AND 6-HORSE POWER.

TWO-CYCLE.



No.	Engine Description	FRESH WATER	SALT WATER
No. 11H3033	5-Horse Power Engine, with Schebler carburetor and full equipment, except the propeller. Price.	\$85.50	\$89.45
No. 11H3034	5-Horse Power Engine, with Schebler carburetor and full equipment, except the propeller, propeller shaft and stuffing box. Price.		81.75
No. 11H3027	6-Horse Power Engine, with Schebler carburetor and full equipment. Price.	\$98.45	\$101.65
No. 11H3028	6-Horse Power Engine, with Schebler carburetor and full equipment, except the propeller, propeller shaft and stuffing box. Price.		94.75



No.	Engine Description	FRESH WATER	SALT WATER
No. 11H3039	8-Horse Power Engine, with Schebler carburetor and full equipment. Price.	\$125.65	\$129.75
No. 11H3040	8-Horse Power Engine, with Schebler carburetor and full equipment, except the propeller, propeller shaft and stuffing box. Price.		119.15
No. 11H3042	12-Horse Power Engine, with Schebler carburetor and full equipment. Price.	\$168.75	\$172.75
No. 11H3043	12-Horse Power Engine, with Schebler carburetor and full equipment, except the propeller, propeller shaft and stuffing box. Price.		162.45



**THIS BOOK IS
FREE**

**80 Feet of Samples!
Prices Below Dealers' Costs**

Paper for a Whole Room for Less Than a Dollar!

Fill out the Coupon on the other side and mail this Post Card today

SEARS, ROEBUCK AND CO.

Place 2-cent stamp here and write your name and address in the space provided.

Post Card

PHILADELPHIA, PA.

Sears, Roebuck and Co.
ON THE WORLD'S LARGEST STORE

(OVER)

WRITE YOUR NAME AND ADDRESS HERE
Please Write Plainly

Send Me Your 1928 Wall Paper Sample
Book 637X on the Date Checked

DATE JAN. FEB. MARCH

NAME _____

POSTOFFICE _____

STATE _____

RURAL ROUTE _____ BOX _____

Give Rural Route and Box Number if on a Rural Route

STREET ADDRESS _____ PH7635

Digitized by the Internet Archive
in 2010 with funding from
Lyrisis Members and Sloan Foundation

<http://www.archive.org/details/catalogno12400sear>