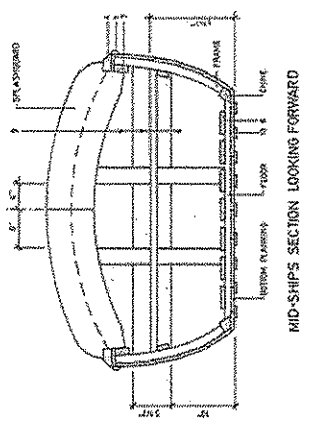
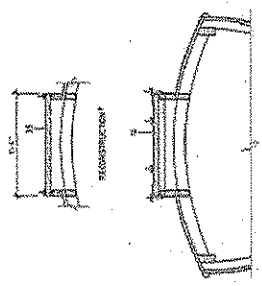
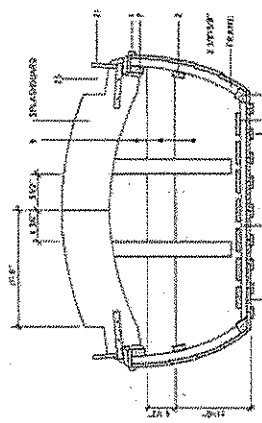
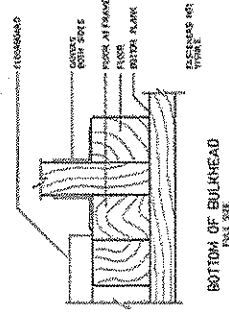
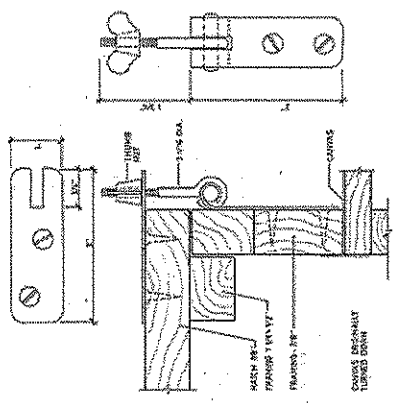
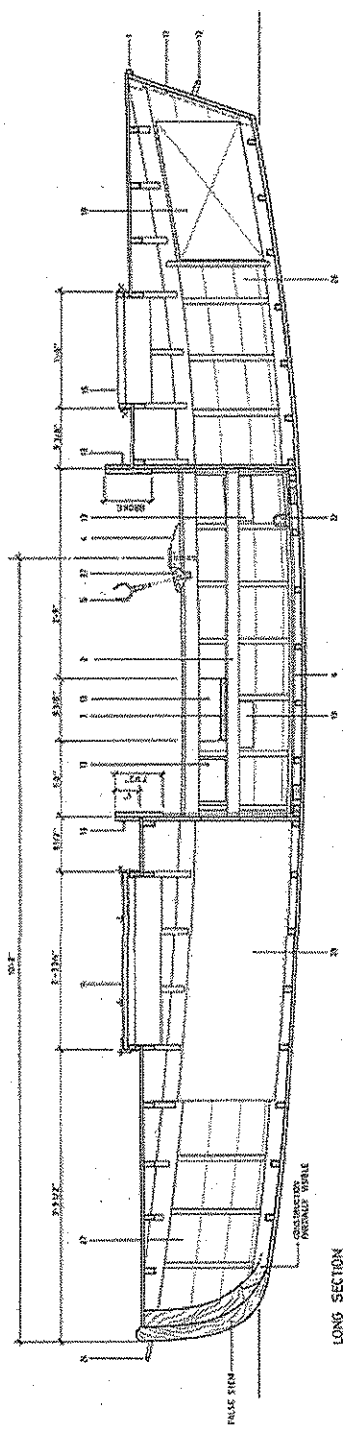


64

EDITH

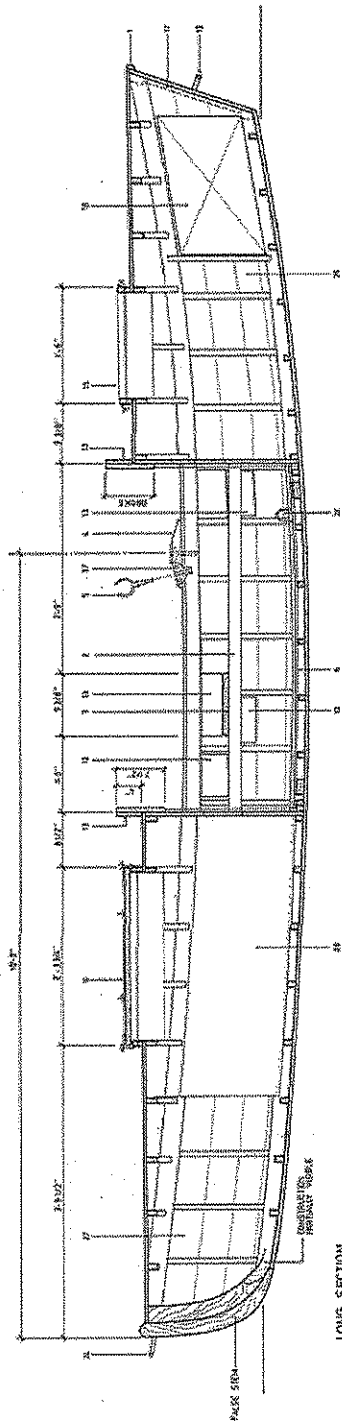
**"EDITH"
GALLOWAY TYPE CATARACT BOAT**
BUILT BY RACING BOAT BUILDING CO., 1910
RACINE, WI
DRAWINGS PREPARED BY GOOD BLOCK
SHEET 1/2"-1/4"



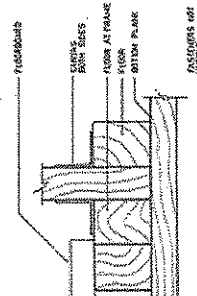
"EDITH"
GALLOWAY TYPE CATARACT BOAT
BUILT BY RACINE BOAT BUILDING CO., © 1910

RACINE, WI

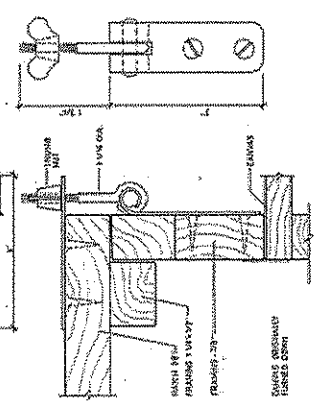
OWNERS: MR. & MRS. J. F. COOPER
NO. 127-17



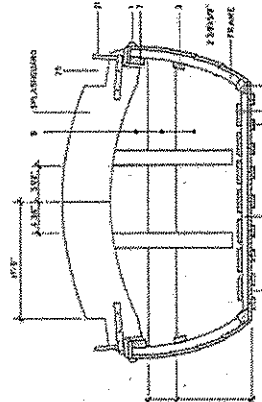
LONG SECTION



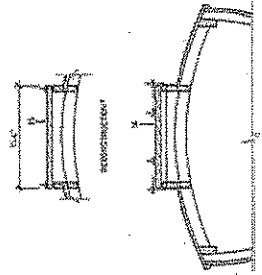
BOTTOM OF BULKHEAD
1/8" SCALE



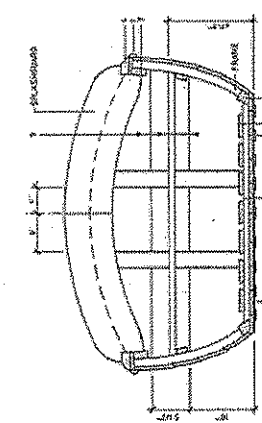
HATCH DETAILS
1/8" SCALE



MID-SHIP SECTION LOOKING AFT



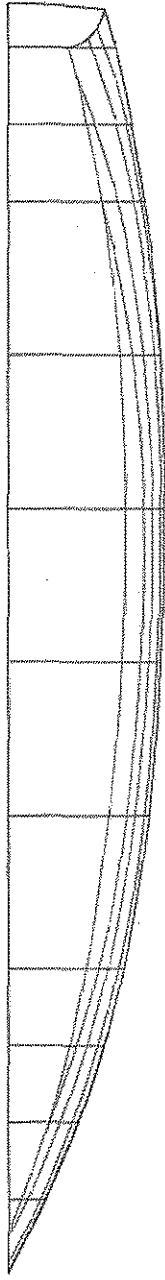
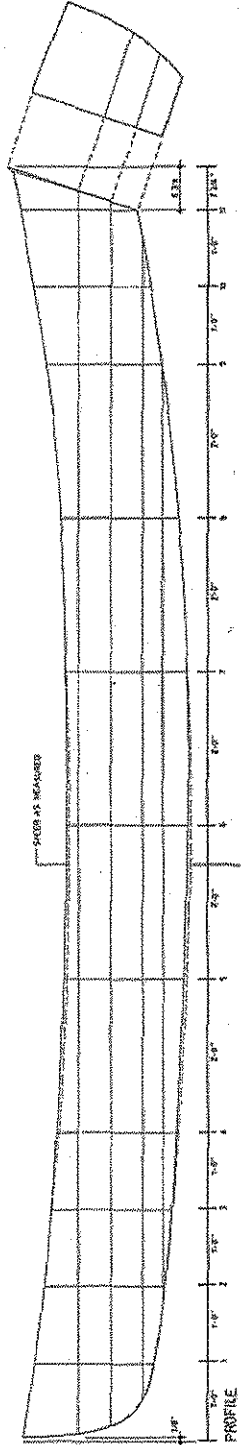
SECTION AT HATCH
AS MEASURED



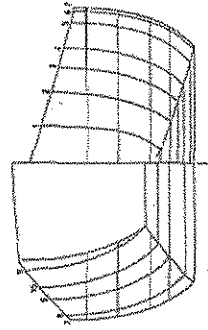
MID-SHIP SECTION LOOKING FORWARD

NOTES

1. SHOWN THE MEASUREMENTS IN THE DRAWING.
2. TOTAL AREA AND EXTENTIONS OF MATERIALS ON THE BOATS. THE DRAWING MATERIALS AND EXTENDING WOULD BE APPROXIMATE.
3. THE DIMENSIONS ARE FROM THE GUNWALE AND INTERSECTIONS A SHOULD BEHOLD THE BOAT WITH A PORTION OF THE STERN AND FORWARD PARTS OF THE BOAT. THE POSITION IS INDICATED WITH A CENTER LINE.



HALF BREADTHS PLAN



BODY PLAN

TABLE OF OFFSETS

STATION	PORT SIDE		STARBOARD SIDE		TOTAL WIDTH
	FEET	INCHES	FEET	INCHES	
1	14.00	0	14.00	0	28.00
2	13.80	6	13.80	6	27.60
3	13.40	12	13.40	12	26.80
4	12.90	18	12.90	18	25.80
5	12.30	24	12.30	24	24.60
6	11.60	30	11.60	30	23.20
7	10.80	36	10.80	36	21.60
8	9.90	42	9.90	42	19.80
9	8.90	48	8.90	48	17.80
10	7.80	54	7.80	54	15.60
11	6.60	60	6.60	60	13.20
12	5.40	66	5.40	66	10.80
TOTAL	144.00	540	144.00	540	288.00

SHOWN THE MEASUREMENTS IN THE DRAWING.
 TOTAL AREA AND EXTENTIONS OF MATERIALS ON THE BOATS.
 THE DIMENSIONS ARE FROM THE GUNWALE AND INTERSECTIONS A SHOULD BEHOLD THE BOAT WITH A PORTION OF THE STERN AND FORWARD PARTS OF THE BOAT.
 THE POSITION IS INDICATED WITH A CENTER LINE.

"EDITH"
GALLOWAY TYPE CATARACT BOAT
 BUILT BY RACINE BOAT BUILDING CO., L.P. INC.
 RACINE, WI.
 DRAWING GENERATED BY FOOD54XCH
 SCALE 1/2" = 1'-0"

Boat Name: EDITH

LOA ~~16-4-2~~
16-7-3

Catalog No.: _____

Acq. No.: GRCA- _____

Station No.: _____

Station Notes:

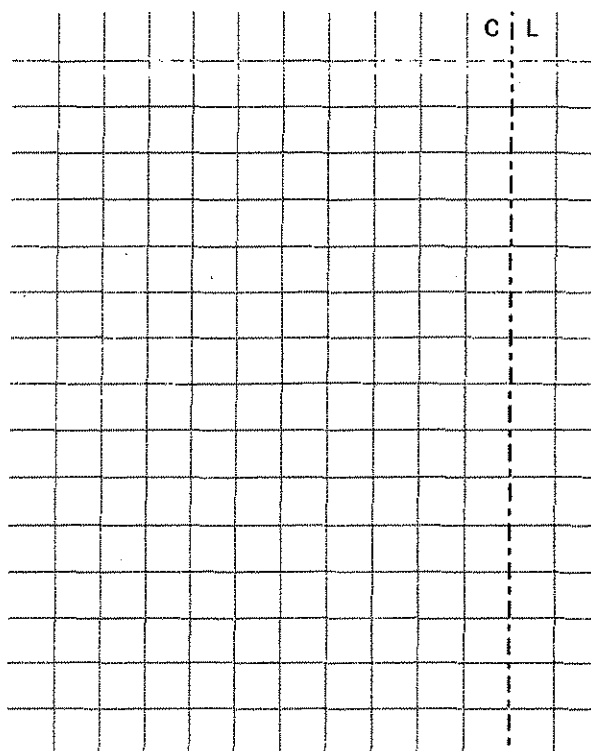
SEE OVER

STATIONS IN FEET
FROM THE BOW (HALF
ROUND)

- DAMAGE TO BOTH SIDES OF HULL @ COCKPIT MAY BE CAUSING HOG
- DAMAGE TO DECK HAS CAUSED SAG

1
2
3
5
7
9
11
13
14
15
16

Point	Vert.	Horz.
Rabbit		
Keel		0-0

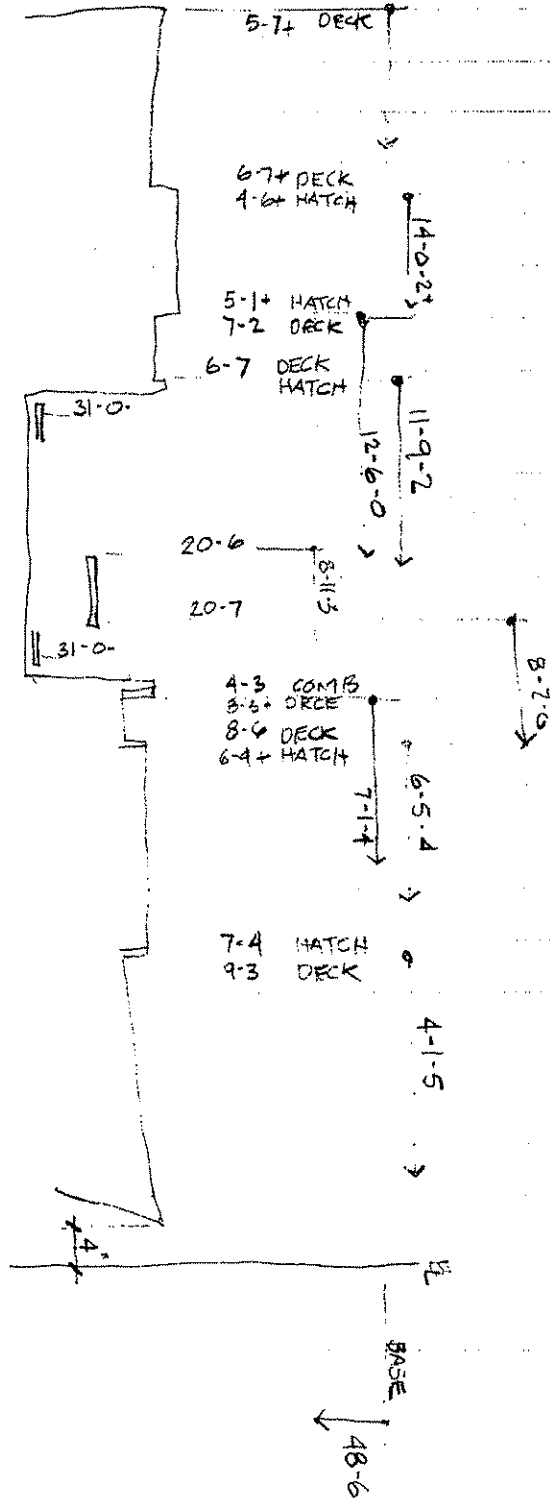


Measurement Notes:

- STEM HALF RD = 1/4"
- "TD. SHR" IS TOP OF DECK, DECK PLANK = 3/8" (MEASURED AT DAMAGE)
- DECK AT COCKPIT SIDES = 1/2"
- MEASURE JIG WAS TILTED - 1" OUT AT 48" FROM FLR. & 7/16 UP @ 25 1/2"
- * CORRECT DECK & SHR. NOS, BY 1/8 (MEASURE STICK)

Measured by: TODD BLOCH, CAMERON STAVELEY Date: AUG. 9, 2003

EDITH



Grand Canyon National Park - Small Craft Collection
Documentation Project - August 8 - 13, 2003

Boat Name: FORTH

Catalog No.: _____

Acq. No.: GRCA-

Station No.: 1

Station Notes:

BASE OFFSET = 25"

Point	Vert.	Horz.										C	L
T.O. DECK	40-6												
T.O. SHR	39-3	20-0	5										
BTM SHR	31-0	20-0	5										
2	27-6	20-4+	20.5										
3	23-5+	21-4+	3.5										
CHINE	20-0	23-3+	(CENT) 16.25										
Rabbit													
Keel		0-0											

Base

Measurement Notes:

Measured by: _____ Date: _____

Grand Canyon National Park – Small Craft Collection
 Documentation Project – August 8 – 13, 2003

Boat Name: EDITH

Catalog No.: _____

Acq. No.: GRCA -

Station No.: 2
 MOVED AFT 3 1/8"

Station Notes:

BASE OFFSET = 27"

Point	Vert.	Horz.									C	L
TO. DECK	→ 37-3	15-5	11.375									
T.O. SHR	→ 29-7	15-6	11.25									
BTM SHR	→ 25-6	16-5	10.375									
2												
3	27-7+	18-1	8.875									
CHINE	19-6	19-7	7.125									
Rabbit												
Keel		0-0										

Base

Measurement Notes:

Measured by: _____ Date: _____

Grand Canyon National Park – Small Craft Collection
Documentation Project – August 8 – 13, 2003

Boat Name: EDITH

Catalog No.: _____

Acq. No.: GRCA- _____

Station No.: 3

Station Notes:

BASE OFFSET = 26"

Point	Vert.	Horz.								C	L
T.O. DECK	40-5	4									
T.O. SHR	36-3	11-6	14.25								
BTM SHR	28-7	11-7+	14.125								
2	24-6+	13-0	13								
3	20-7	14-5+	11.375								
CHINE	17-7	16-7	9.125								
Rabbit											
Keel		0-0									

Base

Measurement Notes:

Measured by: _____ Date: _____

Grand Canyon National Park – Small Craft Collection
Documentation Project – August 8 – 13, 2003

Boat Name: EDITH

Catalog No.: _____

Acq. No.: GRCA-

Station No.: 5

Station Notes:

BASE OFFSET = 26.2

Point	Vert.	Horz.						C	L
DECK AT HATCH	39-5+	18-0+		8.25					
T.O. SHR	3A-4	6-4		19.75					
BTM SHR	27-1+	6-7		19.375					
2	23-2	8-1+		18.125					
3	19-2+	10-1		16.125					
CHINE	16-1+	12-4		13.75					
Rabbit									
Keel		0-0							
Base									

Measurement Notes:

Measured by: _____ Date: _____

Grand Canyon National Park – Small Craft Collection
Documentation Project – August 8 – 13, 2003

Boat Name: EDITH

Catalog No.: _____

Acq. No.: GRCA-

Station No.: 7

Station Notes:

BASE OFFSET = 26-2

Point	Vert.	Horz.																			C	L
TO. DECK RAIL	34-6+	6-4	19.75																			
TO. SHR	34-2-	4-0	22.25																			
BTM. SHR	26-7+	4-0	22.25																			
2	22-4+	5-2+	21																			
3	18-4	7-1+	19.125																			
CHINE	15-2	9-4+	16.75																			
Rabbit																						
Keel						0-0																

Base

Measurement Notes:

Measured by: _____ Date: _____

Grand Canyon National Park – Small Craft Collection
Documentation Project – August 8 – 13, 2003

Boat Name: EDITH

Catalog No.: _____

Acq. No.: GRCA -

Station No.: 9

Station Notes:

BASE OFFSET = 26-2

Point	Vert.	Horz.								C	L
T.O. DECK/ RAIL	34-5	5-2	21								
T.O. SHR	34-2+	2-6	23.5								
BTM. SHR	26-5+	2-7-	23.375								
2	22-4	3-7-	22.375								
3	18-3+	5-3+	20.875								
CHINE	15-0+	7-6+	18.5								
Rabbet											
Keel		0-0									

Base

Measurement Notes:

Measured by: _____ Date: _____

Boat Name: EDITH
 Catalog No.: _____
 Acq. No.: GRCA- _____

Station No.: 11

Station Notes:
BASE OFFSET = 26-2

Point	Vert.	Horz.		CIL	
T.O. DECK RAIL	34-7+	5-2+	21		
T.O. SHR	34-4+	2-5+	23.625		
BTM. SHR	27-2	2-7	23.375		
2	23-1-	4-0	22.25		
3	19-0	5-5+	20.625		
CHINE	15-4	8-2+	18		
Rabbit					
Keel		0-0			

Measurement Notes:

Measured by: _____ Date: _____

Grand Canyon National Park – Small Craft Collection
 Documentation Project – August 8 – 13, 2003

Boat Name: EDITH

Catalog No.: _____

Acq. No.: GRCA -

Station No.: 13

Station Notes:

BASE OFFSET = 26-3

Point	Vert.	Horz.																	C	L
DECK AT HATCH	41-7	18-6	7.625																	
T.O. SHR	36-0	4-3+	22																	
BTM SHR	28-7	4-7	21.5																	
2	24-6-	6-2	20.125																	
3	20-7+	8-1	18.25																	
CHINE	17-7-	10-4+	15.875																	
Rabbit																				
Keel		0-0																		

Base

Measurement Notes:

Measured by: _____ Date: _____

Grand Canyon National Park – Small Craft Collection
Documentation Project – August 8 – 13, 2003

Boat Name: EDITH

Catalog No.: _____

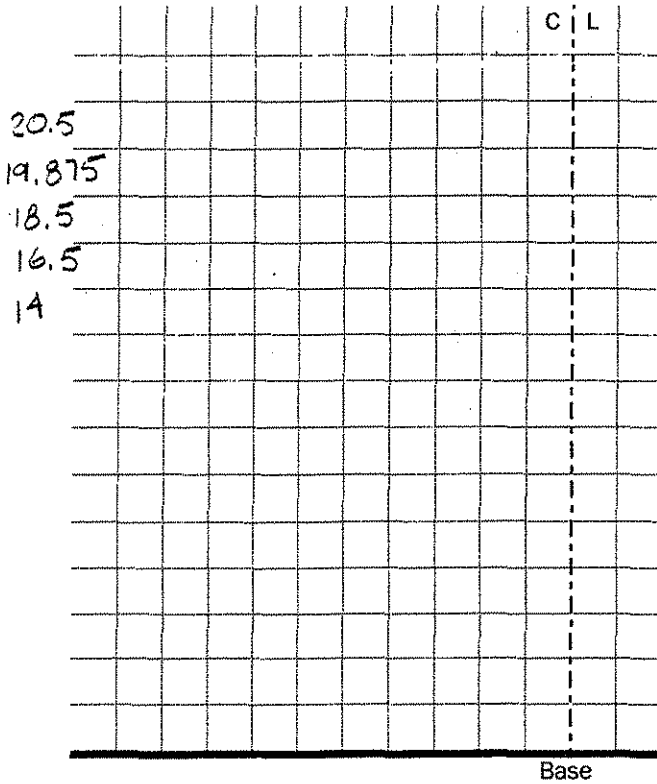
Acq. No.: GRCA-

Station No.: 14

Station Notes:

BASE OFFSET = 26-4

Point	Vert.	Horz.
T.O. DECK	42-7	
T.O. SHR	37-3	6-0+
BTM. SHR	30-1+	6-5-
2	25-7+	8-0+
3	22-1+	10-0
CHINE	19-0+	12-4"
Rabbit		
Keel		0-0



Measurement Notes:

STEM HALF RD = 1/4"

"T.O. SHR" IS TOP OF DECK, DECK PLANKING =

Measured by: _____ Date: _____

Grand Canyon National Park – Small Craft Collection
 Documentation Project – August 8 – 13, 2003

Boat Name: EDITH

Catalog No.: _____

Acq. No.: GRCA-

Station No.: 15
 AFT 2 7/8"

Station Notes:

BASE OFFSET = 27.3

Point	Vert.	Horz.		C	L
T.O. DECK	47-6-	4			
T.O. SHR	39-6	9-3	18		
BTM SHR	32-4+	10-1-	17.25		
2	28-1-	11-5+	15.75		
3	24-2+	13-4+	13.875		
CHINE	21-2+	15-6	11.625		
Rabbit					
Keel		0-0			

Base

Measurement Notes:

Measured by: _____ Date: _____

Grand Canyon National Park – Small Craft Collection
Documentation Project – August 8 – 13, 2003

Boat Name: EDITH

Catalog No.: _____

Acq. No.: GRCA-

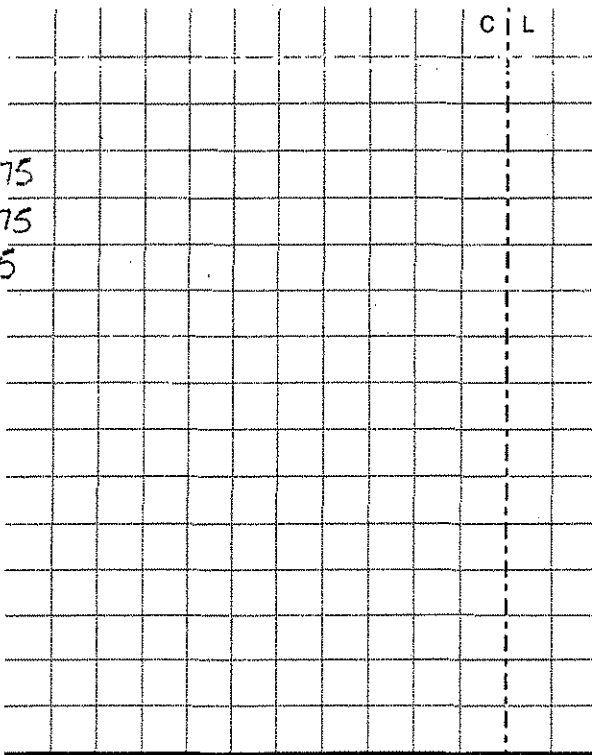
Station No.: 16

Station Notes:

BASE OFFSET = 24-1 +

Point	Vert.	Horz.
T.O. DECK	44-1	ε
T.O. SHR	41-4-	8-1
BTM. SHR	34-3-	8-6+
2	29-5-	10-2-
3	25-6-	12-3-
CHINE	-	-
Rabbit		
Keel		0-0

16
15.375
13.875
11.75

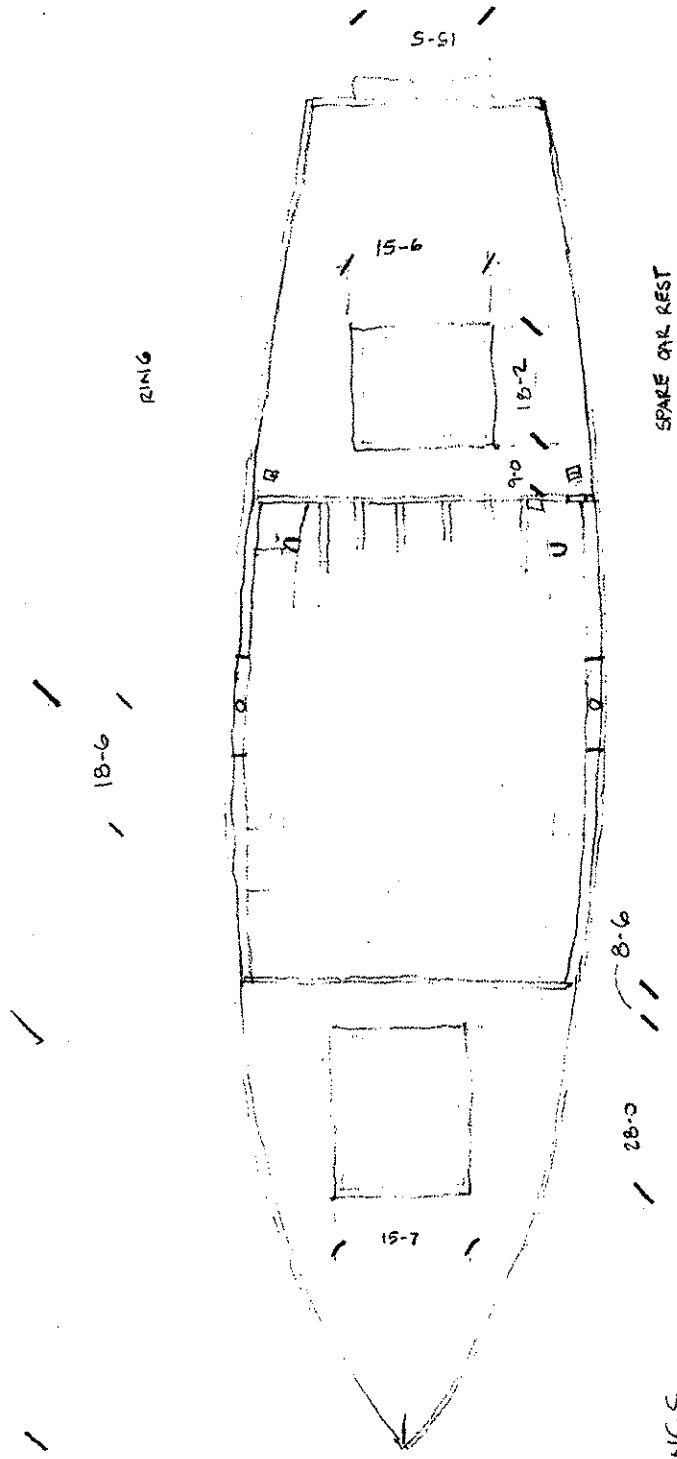


Base

Measurement Notes:

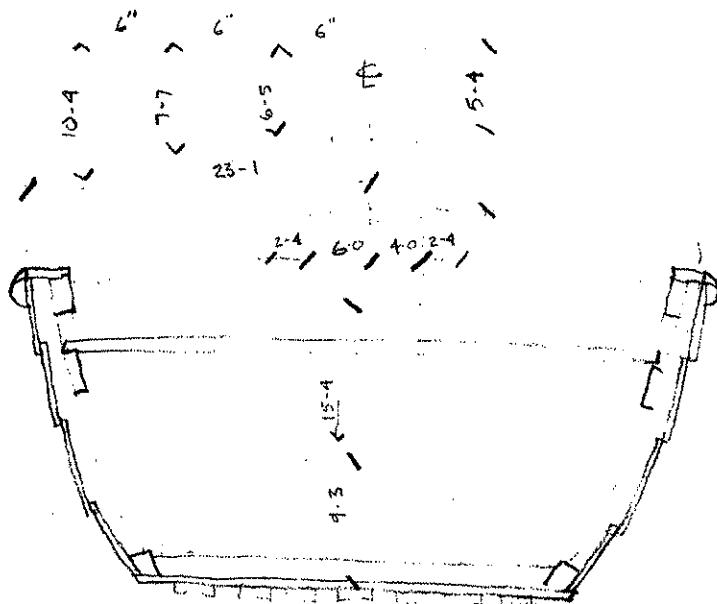
Measured by: _____ Date: _____

EDITH
 T. BLOCH
 8-12-03



- SCANTLINGS
- FRAMES $1/8 \times 7/8$
 - DECK BEAMS $1/2 \times 7/8$
 - DECK PLANKING $3/8$
 - COMINGS $5/8$
 - RUB RAIL $1/8 \times 1/2$
 - PLANKING $1/2$
 - RISER $1/8 \times 1/8$
 - SHEAR CLAMP $2/8 \times 1/8$
 - SHELF $2/4 \times 1/2$
 - BTM PLANKING
 - THICKET $7/8$
 - FLOORS $1/8 \times 7/8$
 - CHINE LOG $2 \times 1/4$

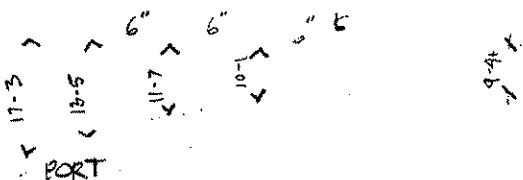
EDITH
T. BLOCH
8-12-03



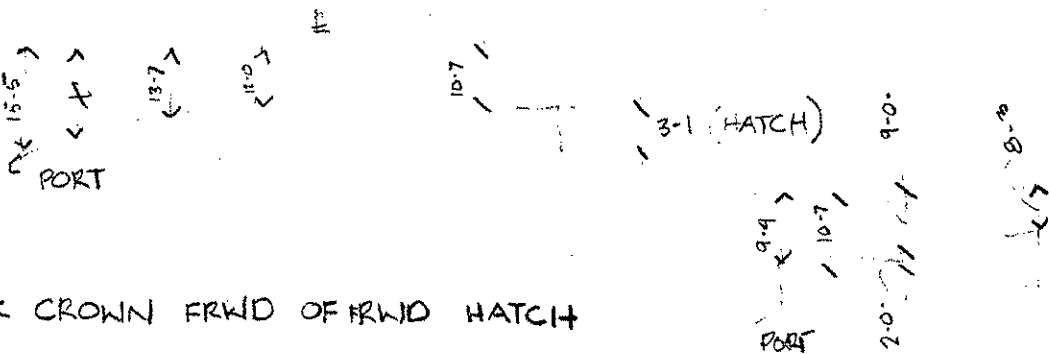
SECTION AFT OF THWART - VIEW FRWD

3/4 x 1/4

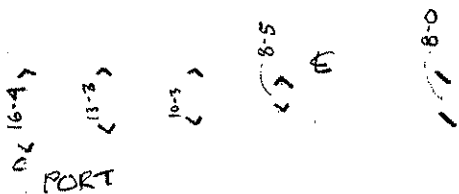
CENTERED OVER
PLANK JOINTS



DECK CROWN FRWD OF FRWD SPLASH GUARD

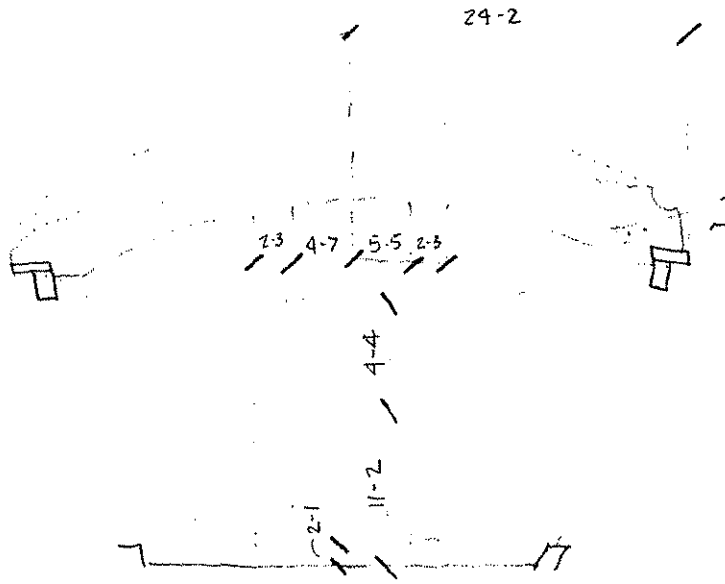


DECK CROWN FRWD OF FRWD HATCH

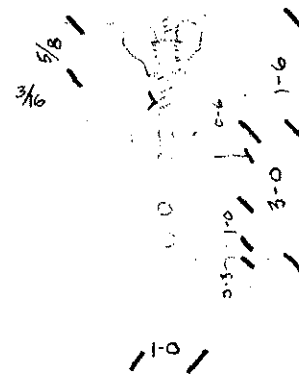
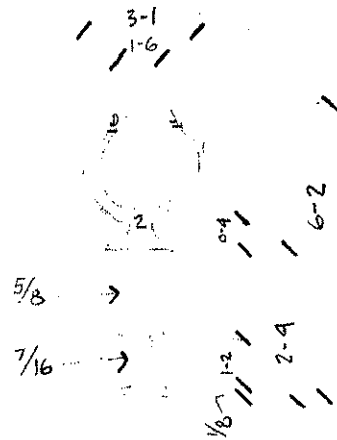
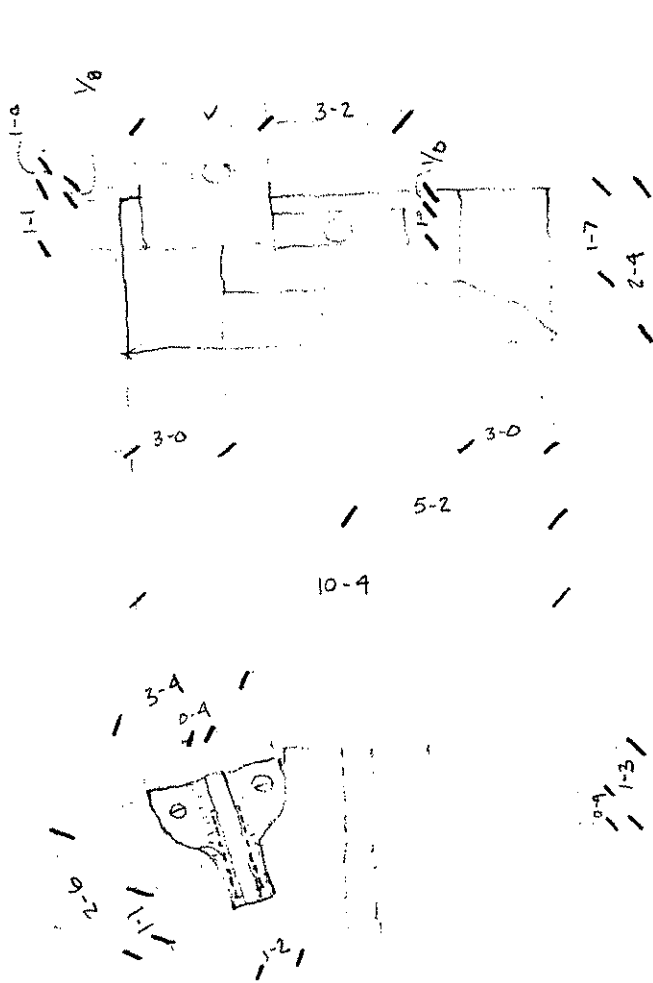


DECK CROWN AFT OF AFT SPLASH GUARD

EDITH
T. BLOCH
8-12-03

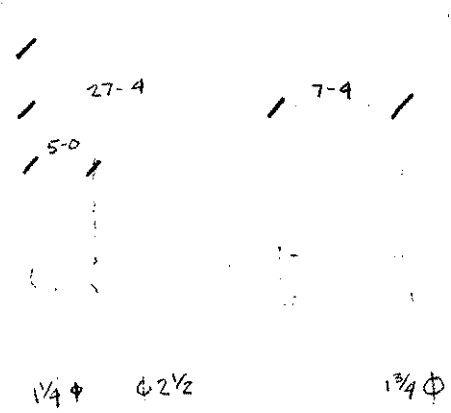
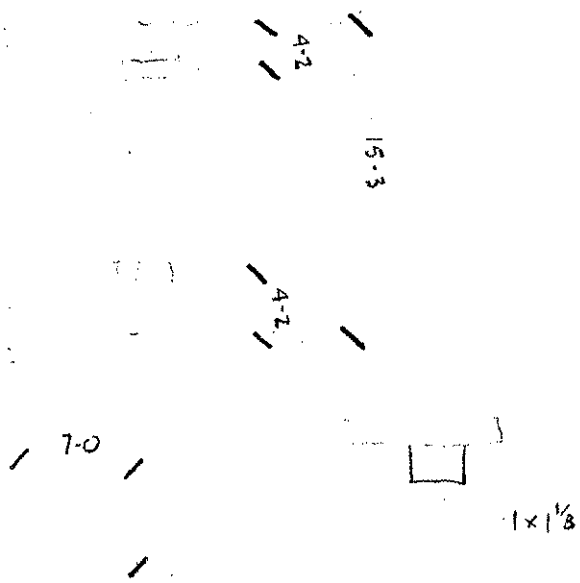
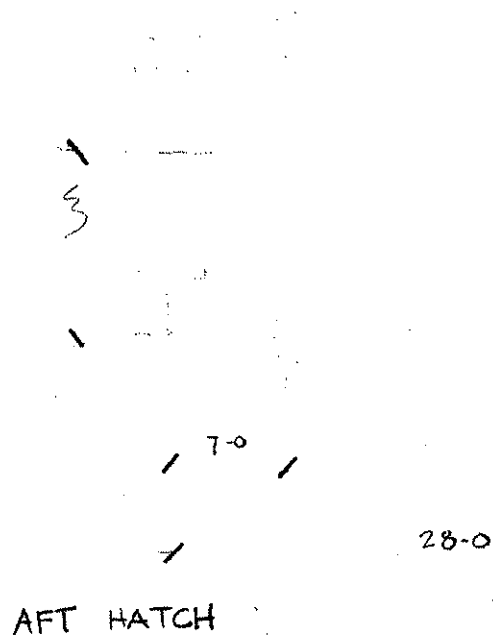


SECTION AFT OF THWART, VIEW AFT



LATCH

EDITH
T. BLOCH
8-12-03



OAR (STONE)

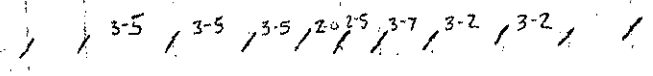


EDITH
T. BLOCH
8.12.03

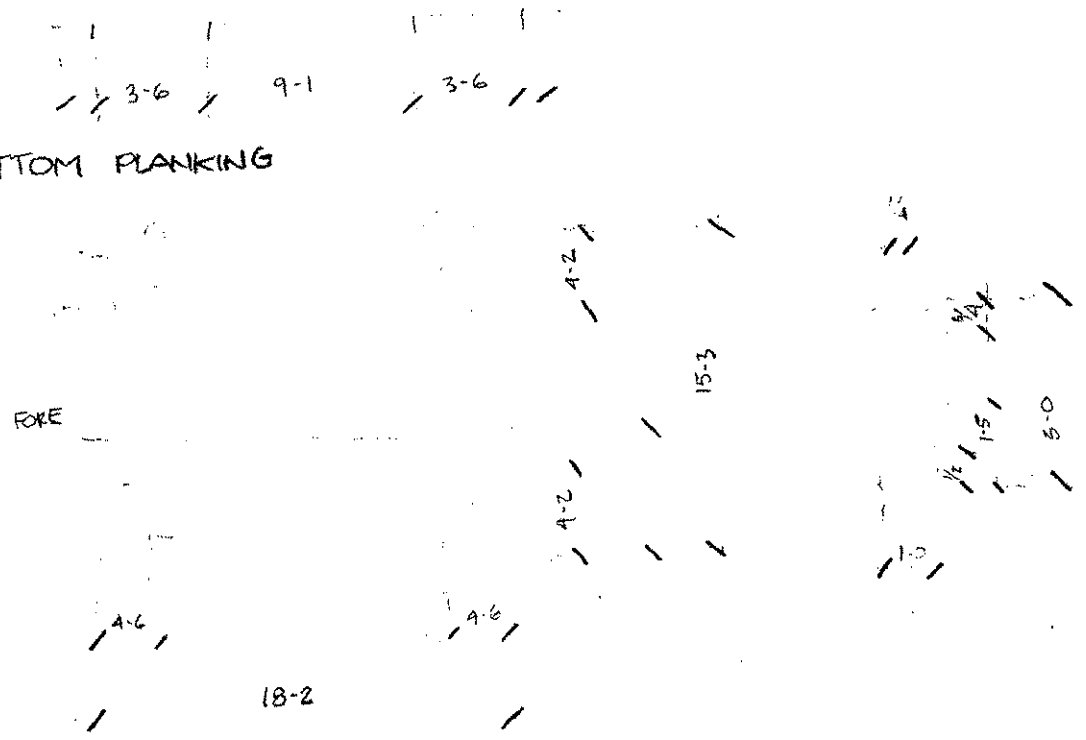
3-2 5-4

AT AFT COMING

DECK PLANKING - AFT



BOTTOM PLANKING



FORWARD HATCH COVER

EDITH
T. BLOCH
8.12.03

MEASURED ON CURVE

7.2 10.0 /

6.0
4.4
4.0
1.1.4
1.10.4
2.7.4
3.5.0
4.1.0
4.10.0
5.7.5
6.4.6

MEASURED ON CURVE

5.6
4.6
4.2
9.0
8.6
9.1
9.6
9.4
19.6

MEASURED ON CURVE

STARBOARD
REPAIR AREA

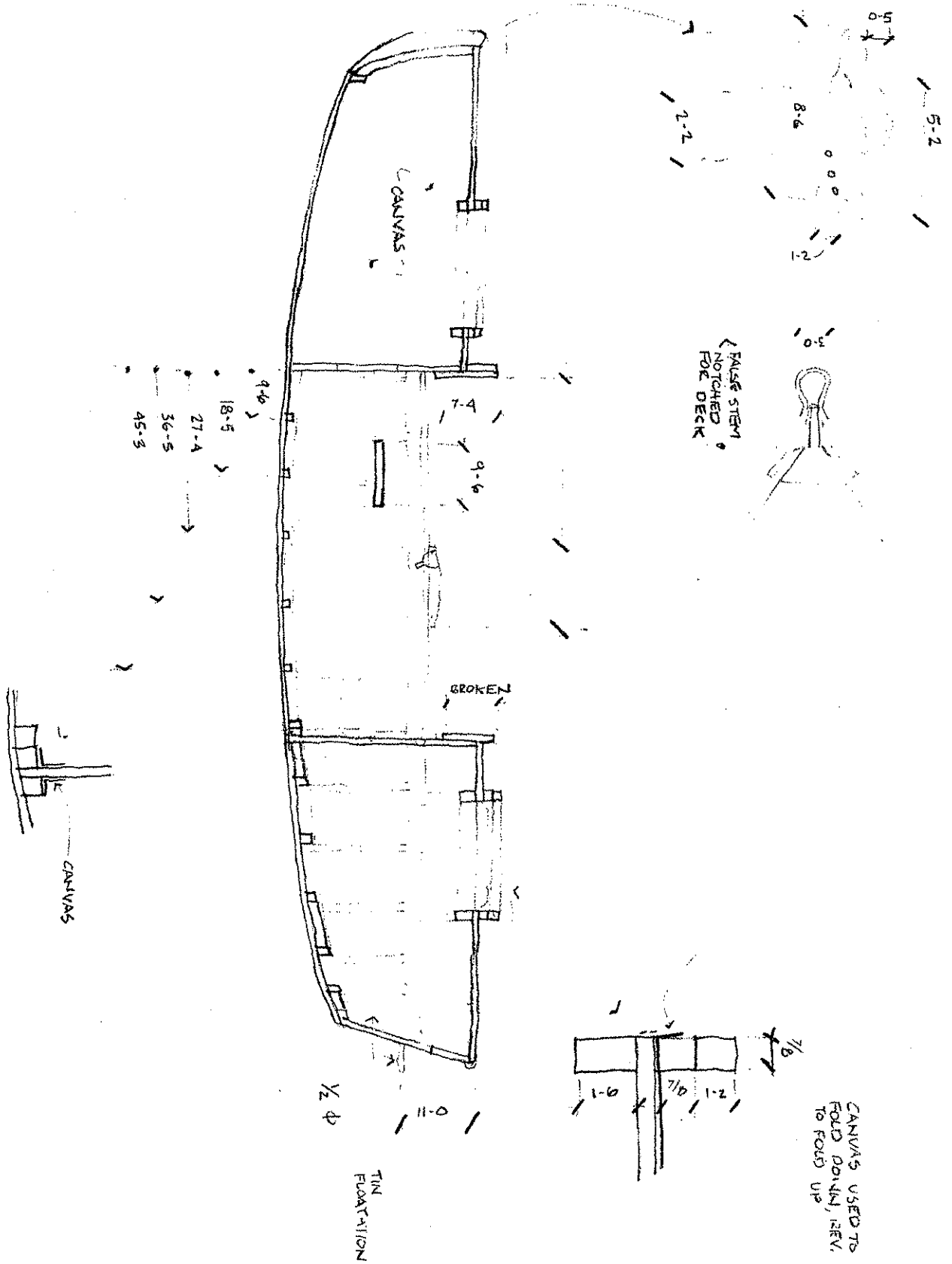
8.3.0
6.0
4.2
4.2
11.0.0

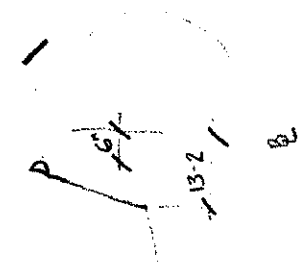
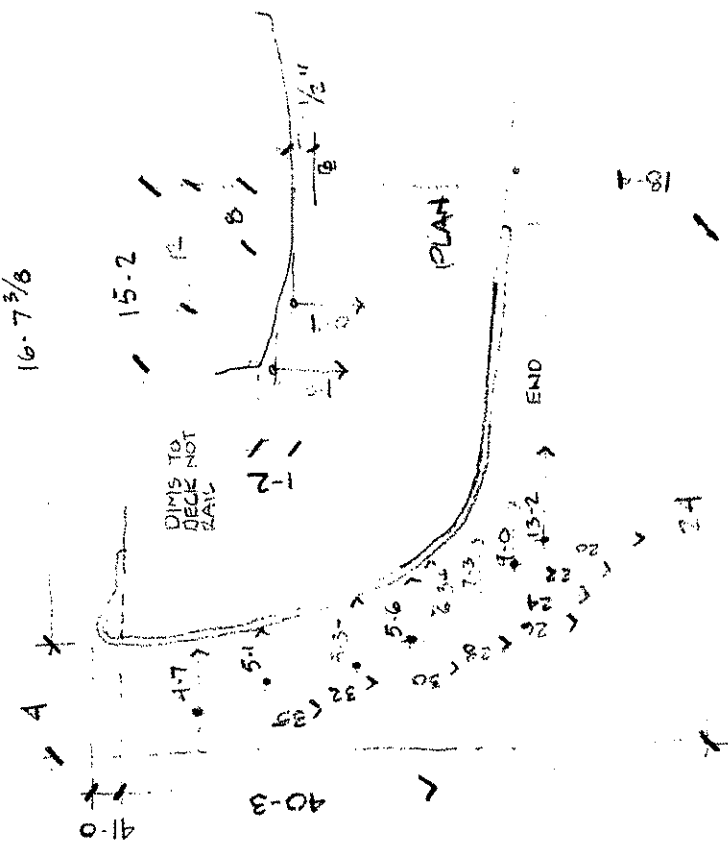
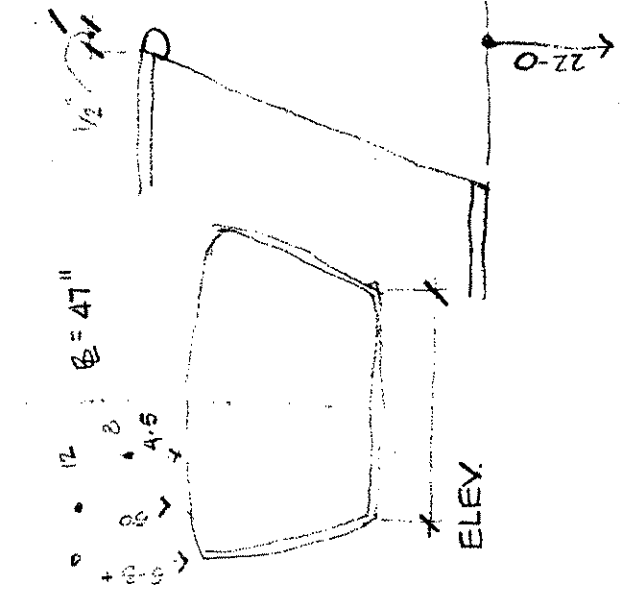
4.0

10.2
2.14
2.15

5.0
6.0
19.4

EDITH
T. BLOCH
8-12-03





TO SHR PROJECTED
TO STEM 40-3

GLEN

1. TECHNICAL INFORMATION AND DATA TO BE OBTAINED FROM ACCENTUATION AND REVISIONS SHOULD BE MARKED WITH AN "A"

REVISIONS

1. HULL
2. DECK
3. ENGINE (100 HP)
4. DECK
5. DECK
6. DECK
7. DECK
8. DECK
9. DECK
10. DECK
11. DECK
12. DECK
13. DECK
14. DECK
15. DECK
16. DECK
17. DECK
18. DECK
19. DECK
20. DECK
21. DECK
22. DECK
23. DECK
24. DECK
25. DECK
26. DECK
27. DECK
28. DECK
29. DECK
30. DECK
31. DECK
32. DECK
33. DECK
34. DECK
35. DECK
36. DECK
37. DECK
38. DECK
39. DECK
40. DECK
41. DECK
42. DECK
43. DECK
44. DECK
45. DECK
46. DECK
47. DECK
48. DECK
49. DECK
50. DECK
51. DECK
52. DECK
53. DECK
54. DECK
55. DECK
56. DECK
57. DECK
58. DECK
59. DECK
60. DECK
61. DECK
62. DECK
63. DECK
64. DECK
65. DECK
66. DECK
67. DECK
68. DECK
69. DECK
70. DECK
71. DECK
72. DECK
73. DECK
74. DECK
75. DECK
76. DECK
77. DECK
78. DECK
79. DECK
80. DECK
81. DECK
82. DECK
83. DECK
84. DECK
85. DECK
86. DECK
87. DECK
88. DECK
89. DECK
90. DECK
91. DECK
92. DECK
93. DECK
94. DECK
95. DECK
96. DECK
97. DECK
98. DECK
99. DECK
100. DECK

DETAILS

1. HULL
2. DECK
3. ENGINE (100 HP)
4. DECK
5. DECK
6. DECK
7. DECK
8. DECK
9. DECK
10. DECK
11. DECK
12. DECK
13. DECK
14. DECK
15. DECK
16. DECK
17. DECK
18. DECK
19. DECK
20. DECK
21. DECK
22. DECK
23. DECK
24. DECK
25. DECK
26. DECK
27. DECK
28. DECK
29. DECK
30. DECK
31. DECK
32. DECK
33. DECK
34. DECK
35. DECK
36. DECK
37. DECK
38. DECK
39. DECK
40. DECK
41. DECK
42. DECK
43. DECK
44. DECK
45. DECK
46. DECK
47. DECK
48. DECK
49. DECK
50. DECK
51. DECK
52. DECK
53. DECK
54. DECK
55. DECK
56. DECK
57. DECK
58. DECK
59. DECK
60. DECK
61. DECK
62. DECK
63. DECK
64. DECK
65. DECK
66. DECK
67. DECK
68. DECK
69. DECK
70. DECK
71. DECK
72. DECK
73. DECK
74. DECK
75. DECK
76. DECK
77. DECK
78. DECK
79. DECK
80. DECK
81. DECK
82. DECK
83. DECK
84. DECK
85. DECK
86. DECK
87. DECK
88. DECK
89. DECK
90. DECK
91. DECK
92. DECK
93. DECK
94. DECK
95. DECK
96. DECK
97. DECK
98. DECK
99. DECK
100. DECK

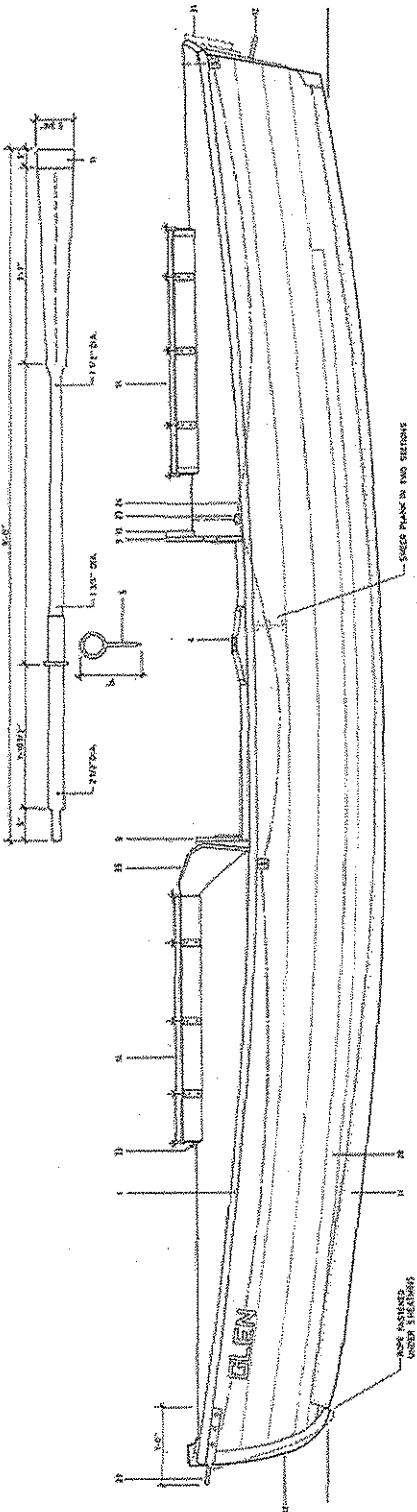
FINISHES

1. HULL
2. DECK
3. ENGINE (100 HP)
4. DECK
5. DECK
6. DECK
7. DECK
8. DECK
9. DECK
10. DECK
11. DECK
12. DECK
13. DECK
14. DECK
15. DECK
16. DECK
17. DECK
18. DECK
19. DECK
20. DECK
21. DECK
22. DECK
23. DECK
24. DECK
25. DECK
26. DECK
27. DECK
28. DECK
29. DECK
30. DECK
31. DECK
32. DECK
33. DECK
34. DECK
35. DECK
36. DECK
37. DECK
38. DECK
39. DECK
40. DECK
41. DECK
42. DECK
43. DECK
44. DECK
45. DECK
46. DECK
47. DECK
48. DECK
49. DECK
50. DECK
51. DECK
52. DECK
53. DECK
54. DECK
55. DECK
56. DECK
57. DECK
58. DECK
59. DECK
60. DECK
61. DECK
62. DECK
63. DECK
64. DECK
65. DECK
66. DECK
67. DECK
68. DECK
69. DECK
70. DECK
71. DECK
72. DECK
73. DECK
74. DECK
75. DECK
76. DECK
77. DECK
78. DECK
79. DECK
80. DECK
81. DECK
82. DECK
83. DECK
84. DECK
85. DECK
86. DECK
87. DECK
88. DECK
89. DECK
90. DECK
91. DECK
92. DECK
93. DECK
94. DECK
95. DECK
96. DECK
97. DECK
98. DECK
99. DECK
100. DECK

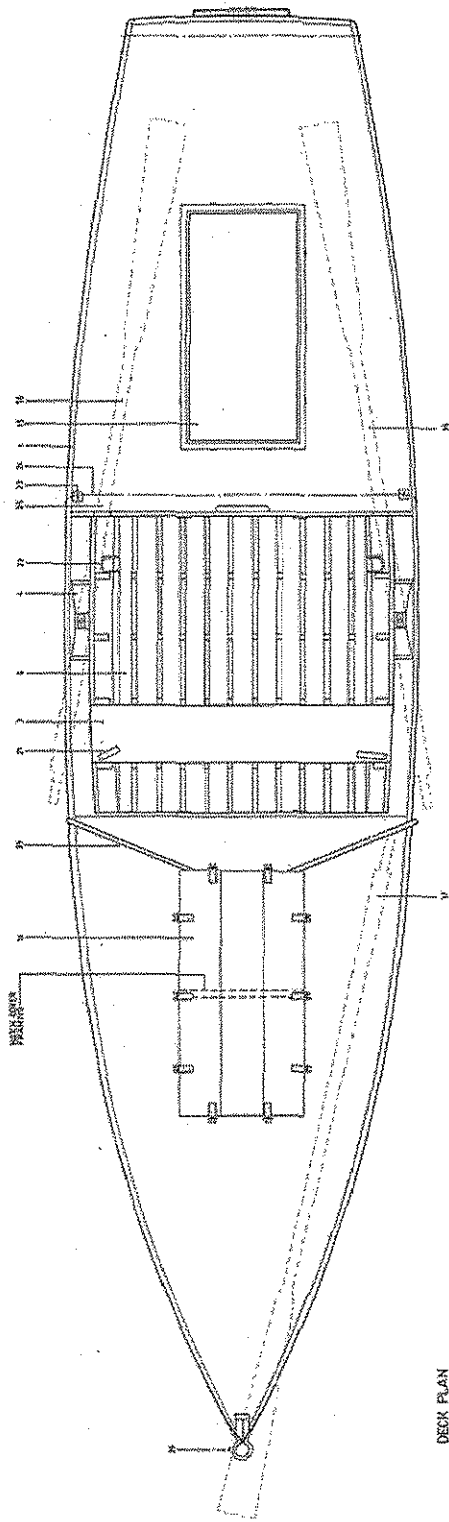
"GLEN"
 GALLOWAY TYPE CATARACT BOAT
 BUILT BY FELLOWS & STEWART (unbuilt), c. 1921

MANUFACTURED BY

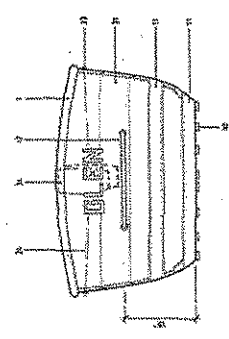
DESIGNED BY



PROFILE



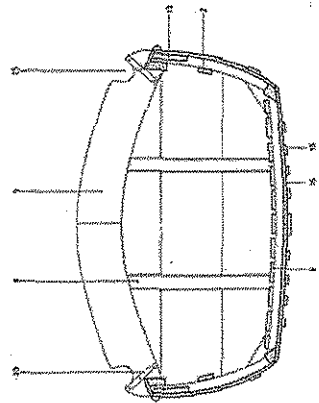
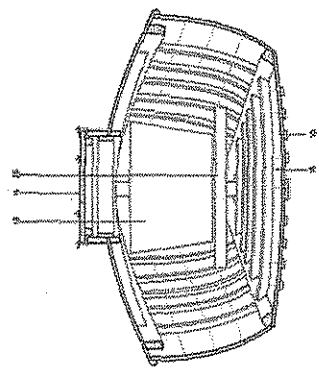
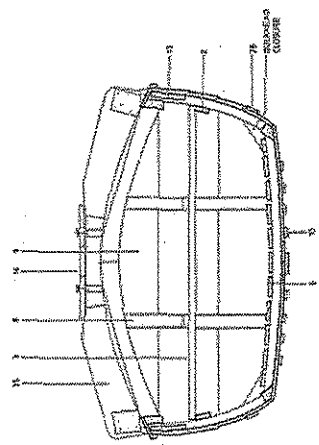
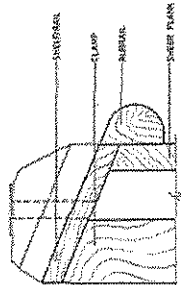
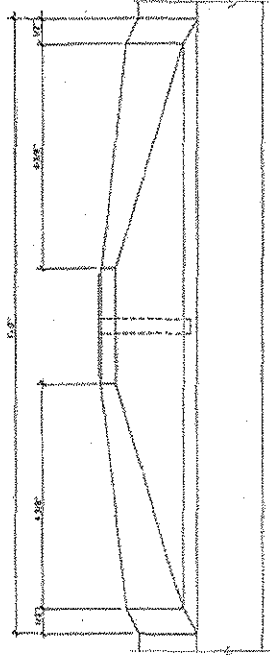
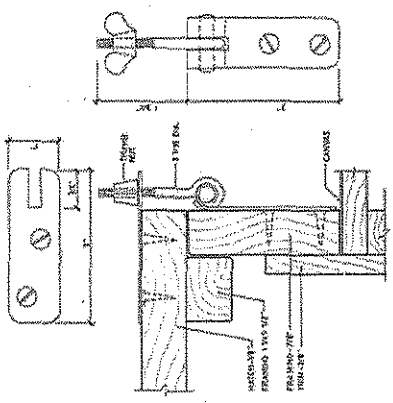
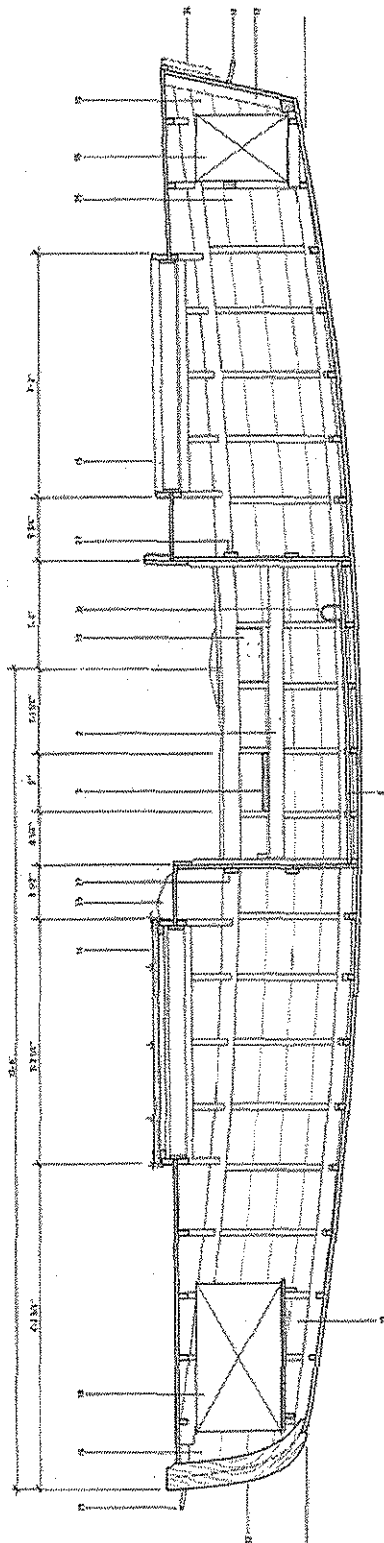
DECK PLAN



TRANSOM-PROJECTED

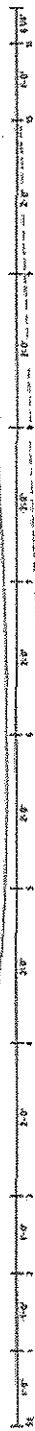
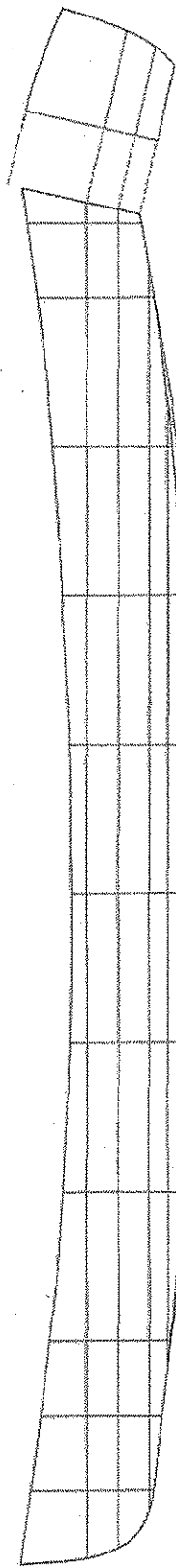
"GLEN"
GALLOWAY TYPE CATARACT BOAT
BUILT BY FELLOWS & STEWART (BIRMINGHAM, CT 1921)
WINDSOR, CT

DRAWING CONVENTION BY TAPPAN & CO
SCALE 1/2" = 1'-0"

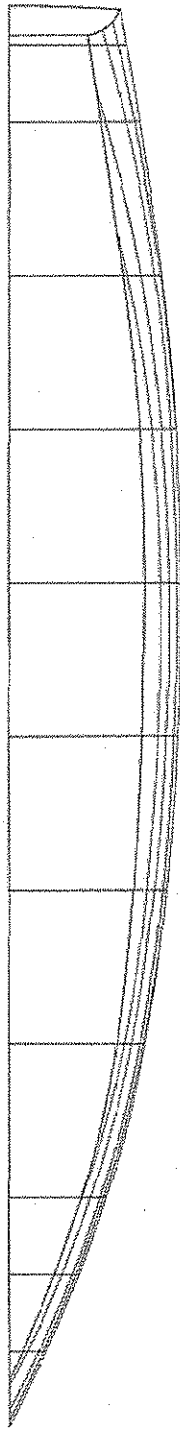


NOTES

1. KEEL RIG MEASURED IN FEET ONLY.
2. THESE ARE THE DIMENSIONS OF THE KEEL AND THE DISCREPANCY IS IN THE KEEL.
3. THESE ARE THE DIMENSIONS OF THE KEEL AND THE DISCREPANCY IS IN THE KEEL.



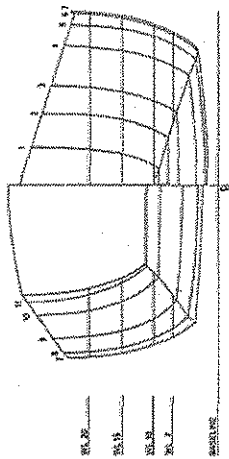
HALF BREADTH PLAN



HALF BREADTH PLAN



3' STAGES



BODY PLAN

TABLE OF DIMENSIONS

STATION	0	1	2	3	4	5	6	7	8	9	10	11	12	13	14	15	16	17	18	19	20	21	22	23	24	25	26	27	28	29	30
KEEL	0.0	0.0	0.0	0.0	0.0	0.0	0.0	0.0	0.0	0.0	0.0	0.0	0.0	0.0	0.0	0.0	0.0	0.0	0.0	0.0	0.0	0.0	0.0	0.0	0.0	0.0	0.0	0.0	0.0	0.0	
DECK	0.0	0.0	0.0	0.0	0.0	0.0	0.0	0.0	0.0	0.0	0.0	0.0	0.0	0.0	0.0	0.0	0.0	0.0	0.0	0.0	0.0	0.0	0.0	0.0	0.0	0.0	0.0	0.0	0.0	0.0	0.0
BEAM	0.0	0.0	0.0	0.0	0.0	0.0	0.0	0.0	0.0	0.0	0.0	0.0	0.0	0.0	0.0	0.0	0.0	0.0	0.0	0.0	0.0	0.0	0.0	0.0	0.0	0.0	0.0	0.0	0.0	0.0	0.0
HEAD	0.0	0.0	0.0	0.0	0.0	0.0	0.0	0.0	0.0	0.0	0.0	0.0	0.0	0.0	0.0	0.0	0.0	0.0	0.0	0.0	0.0	0.0	0.0	0.0	0.0	0.0	0.0	0.0	0.0	0.0	0.0

Drawings furnished by the designer.
 All rights reserved.
 No part of this publication may be reproduced without the written permission of the publisher.
 Copyright © 1965

Grand Canyon National Park – Small Craft Collection
Documentation Project – August 8 – 13, 2003

Boat Name: GLEN

18'-6 1/4"
AFT TRANSOM TO STEM HALF ROUND

Catalog No.: _____

Acq. No.: GRCA-

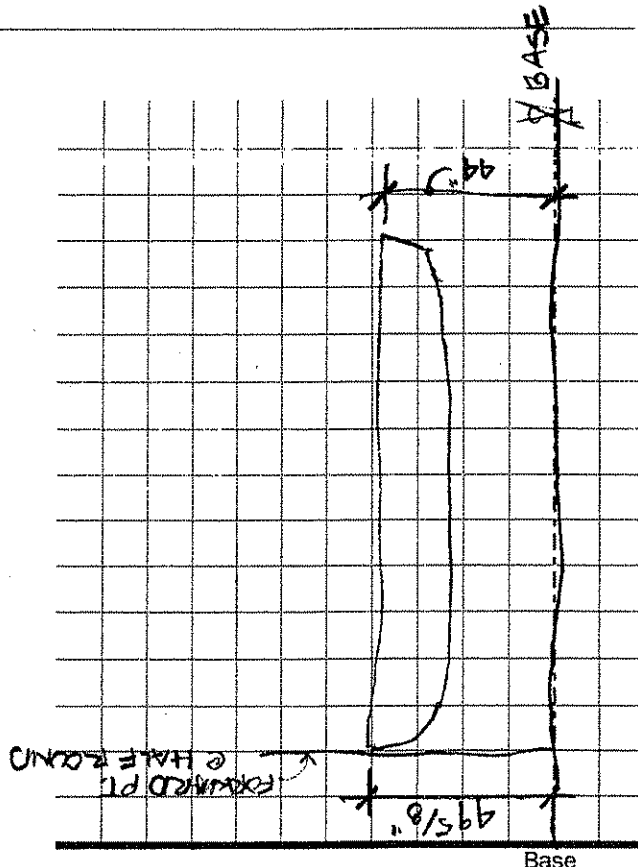
Station No.: _____ →

Station Notes:

• HORIZ. BASE = 36" FROM E

- 1
- 2
- 3
- 5
- 7
- 9
- 11
- 13
- 15
- 17
- 18

Point	Vert.	Horz.
Rabbit		
Keel		0-0



- Measurement Notes:
- STEM HALF ROUND - 1/4"
 - "T.O. SHEAR" IS TOP OF DECK
 - KEEL MEASUREMENTS TO BTM OF RUNNER - SUBTRACT 3/8"
 - MEASUREMENTS IN INCHES - 8THS, TO OUTSIDE OF PLANK
 - BTM OF PLANKS DEFORMED OUT

Measured by: TODD BLOCH, CAMERON STAVELY Date: AUG. 8 2003

GLEN



51-12 TO. OF STEM (HALF ROUND)

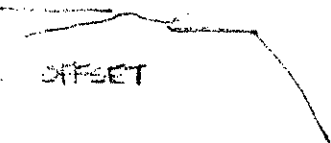
STEM

V	H
44	4-3
45	4-4+
42	4-5
41	4-6-
40	4-6+
38	5
36	5-4
34	6-2-
32	7-3+
30	9-4
28-5+	12-5

V = 28-7

H = 13-7

OFFSET



Grand Canyon National Park – Small Craft Collection
 Documentation Project – August 8 – 13, 2003

Boat Name: GLENI

Catalog No.: _____

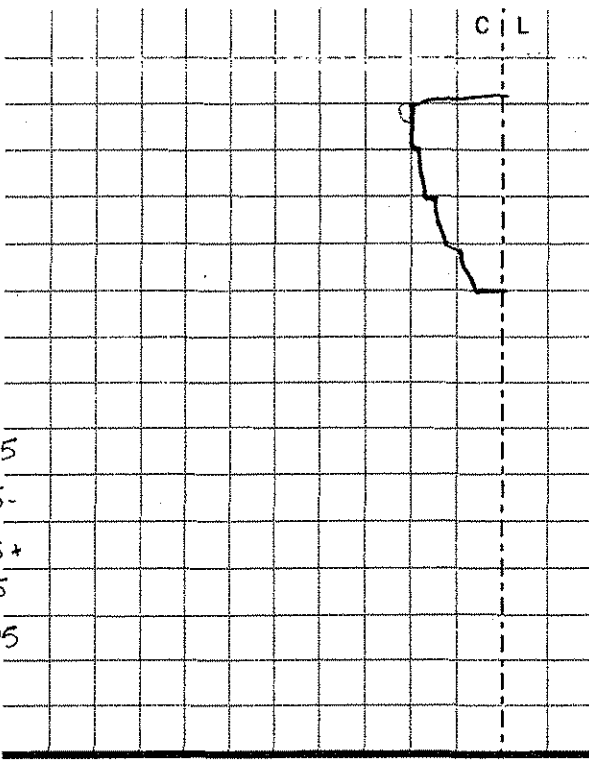
Acq. No.: GRCA -

Station No.: 1

Station Notes:

Ø 36"

Point	H Vert	V Horz
TO. SHEAR	31-0	47-2
BTM SHEAR	31-0	40-6
2	30-7	36-1+
3	32-0	32-0+
CHINE		



TO. DECK @ 4	44-3	
TO SHEAR	7-2	47-4-
B. SHEAR	7-4-	40-7+
4	7-4+	36-3
3	8-6	31-3
CHINE Rabbit	11-1	27-5+
CHINE		0-0

5.75
 5.5-
 5.5+
 4.25
 1.875

I.
 BACK @
 13"

Base

Measurement Notes:

Measured by: _____

Date: _____

Grand Canyon National Park - Small Craft Collection
Documentation Project - August 8 - 13, 2003

Boat Name: GLEN
Catalog No.: _____
Acq. No.: GRCA

Station No.: 2

Station Notes:

 HORZ BASE = 28"

Point	Vert.	Horz.							C	L
TO. SH	45-4+	17-4/	10.5							
BTM. SH	38-3	17-2	10.75							
2	32-1	18-1-	9.875							
3	28-1	19-5	8.375							
CHINE	24-3	22-1	5.875							
Rabbet										
Keel	25-5	0-0								

Base

Measurement Notes:

Measured by: _____ Date: _____

Grand Canyon National Park – Small Craft Collection
 Documentation Project – August 8 – 13, 2003

Boat Name: GLEN

Catalog No.: _____

Acq. No.: GRCA-

Station No.: 3

Station Notes:

 HORZ. BASE @ 28"

Point	Vert.	Horz.																C	L
TD SH	44-7	12-7	15.125																
STM SH	36-7+	12-6	15.25																
2	13-6 ⁵	32-4	14.25																
3	28-6	15-7	12.125																
CHINE	24-7	18-7	9.125																
TO. DECK	47-3																		
Rabbit																			
Keel		0-0																	

Base

Measurement Notes:

 DECK @ FWD HATCH = 46.7 (VERT.)

Measured by: _____ Date: _____

Grand Canyon National Park – Small Craft Collection
Documentation Project – August 8 – 13, 2003

Boat Name: GLEN

Catalog No.: _____

Acq. No.: GRCA-

Station No.: 5

Station Notes:

HORZ BASE = 29"

Point	Vert.	Horz.											C	L
T2 SHR	41-1	8-1	20.875											
BIM SHR	34-2+	8-0	21											
2	29-7	8-7+	20.125											
3	25-6	10-4	18.5											
CHINE	21-7	12-2	16.75											
Rabbet														
Keel	20-2+	0-0												

Base

Measurement Notes: _____

Measured by: _____ Date: _____

Grand Canyon National Park – Small Craft Collection
Documentation Project – August 8 – 13, 2003

Boat Name: GLEN

Catalog No.: _____

Acq. No.: GRCA -

Station No.: 7

Station Notes:

 HORIZ. BASE @ 29"

Point	Vert.	Horz.									C	L
TO. DECK AT HATCH	44-5+											
TO. HATCH	48-1	19-4-	9.5									
TO SHR	39-2+	4-5	24.375									
BTM SHR	32-7	4-3	24.625									
2	28-3	5-3	23.625									
3	24-3	6-7	22.125									
CHINE	20-0	9-6	19.25									
Rabbit												
Keel	18-0	0-0										

Base

Measurement Notes:

Measured by: _____ Date: _____

Grand Canyon National Park – Small Craft Collection
 Documentation Project – August 8 – 13, 2003

Boat Name: GLEN

Catalog No.: _____

Acq. No.: GRCA-

Station No.: 11

Station Notes:

HORZ. BASE @ 31"

Point	Vert.	Horz.								C	L
TO SHR	37-6+	4-4	26.5								
BTM SHR	31-5+	4-2	26.75								
2	27-1	5-0	26								
3	23-7+	6-4	24.5								
CHINE	17-7+	9-6	21.25								
Rabbit											
Keel	16-4	0-0									

Base

Measurement Notes:

Measured by: _____

Date: _____

Grand Canyon National Park - Small Craft Collection
Documentation Project - August 8 - 13, 2003

Boat Name: GLEN
 Catalog No.: _____
 Acq. No.: GRCA -

Station No.: 13

Station Notes:
HORZ. BASE @ 31"

Point	Vert.	Horz.														C	L
TO. HATCH	46-4																
DECK @ HATCH	43-5	21-5	9.375														
TO. SHR	37-6+	5-2+	25.75														
BTM SHR	32-0	5-0+	26														
2	27-1	8-7	22.125														
3	22-6	7-3	23.625														
CHINE	18-0	10-4	20.5														
Rabbet																	
Keel	16-4	0-0															

Base

Measurement Notes:

Measured by: _____ Date: _____

Grand Canyon National Park – Small Craft Collection
 Documentation Project – August 8 – 13, 2003

Boat Name: GLEN

Catalog No.: _____

Acq. No.: GRCA-

Station No.: 15

Station Notes:

HORIZ. BASE @ 30"

Point	Vert.	Horz.									C	L
T.O. HATCH												
DECK @ HATCH	43-1	20-3+	9.625									
TD, SHR	38-5	6-2	23.75									
BTM SHR	32-6+	6-0+	24									
2	27-5+	7-0	23									
3	23-3	8-7+	21.125									
CHINE	19-3+	11-7	18.125									
Rabbit												
Keel	18-0	0-0										

Base

Measurement Notes:

Measured by: _____

Date: _____

Boat Name: GLEN

Catalog No.: _____

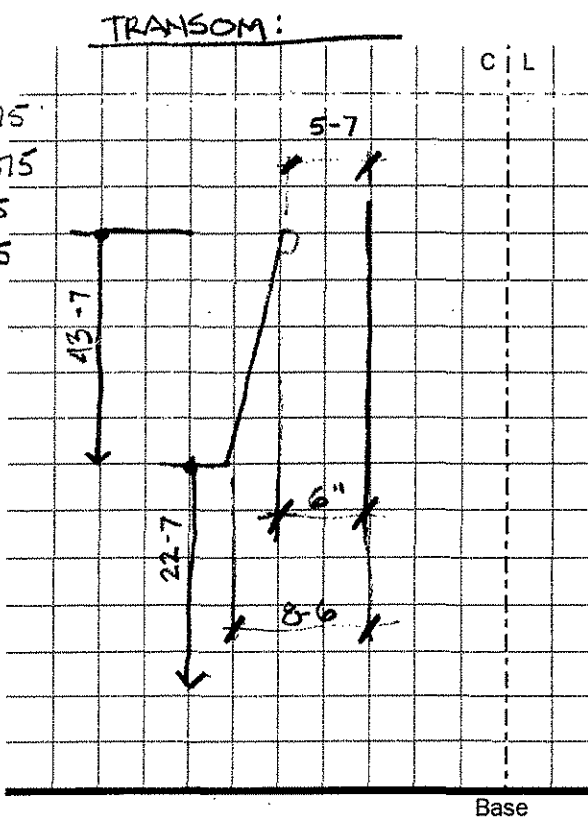
Acq. No.: GRCA- _____

Station No.: 10

Station Notes:

HORIZ. BASE AT 25"

Point	Vert.	Horz.	
T.O. SHR.	41-4	6-5+	18.375
BTM SHR.	35-0	7-1	17.875
2	29-7	8-4	16.5
3	25-5+	10-4	14.5
CHINE	22-4		
Rabbit			
Keel		0-0	



Measurement Notes:

TRANSOM - WIDTH AT BTM. (CHINE) = 12-4

Measured by: _____

Date: _____

Grand Canyon National Park – Small Craft Collection
 Documentation Project – August 8 – 13, 2003

Boat Name: GLEAM

Catalog No.: _____

Acq. No.: GRCA -

Station No.: 17

Station Notes:

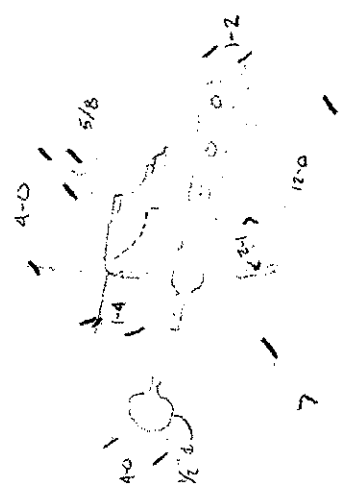
HORIZ. BASE @ 27°

Point	Vert.	Horz.																		C	L
T.O. DECK	43-7																				
T.O. SHR	40-3+	6-6	20.25																		
BTM. SHR	34-2	6-7	20.125																		
2	29-0	8-1+	18.875																		
3	24-7	10-0+	17																		
CHINE	21-6	12-5	14.375																		
Rabbit																					
Keel	20-7+	0-0																			

Measurement Notes:

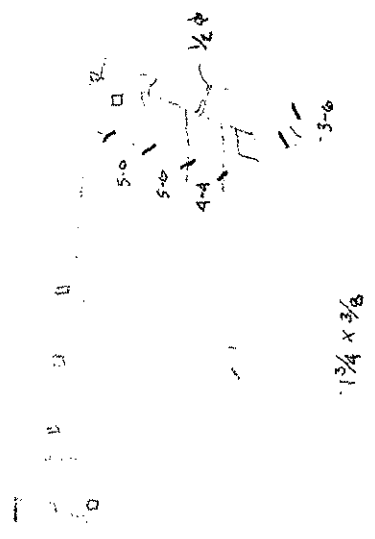
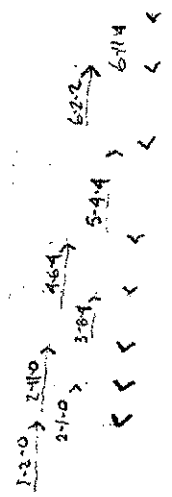
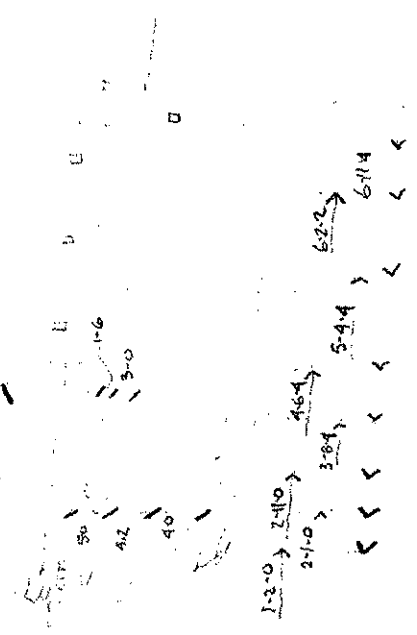
Measured by: _____ Date: _____

GLEN
T. BLOCH
8-13-03



LETTERS - 8 1/2"

14-0 10-4

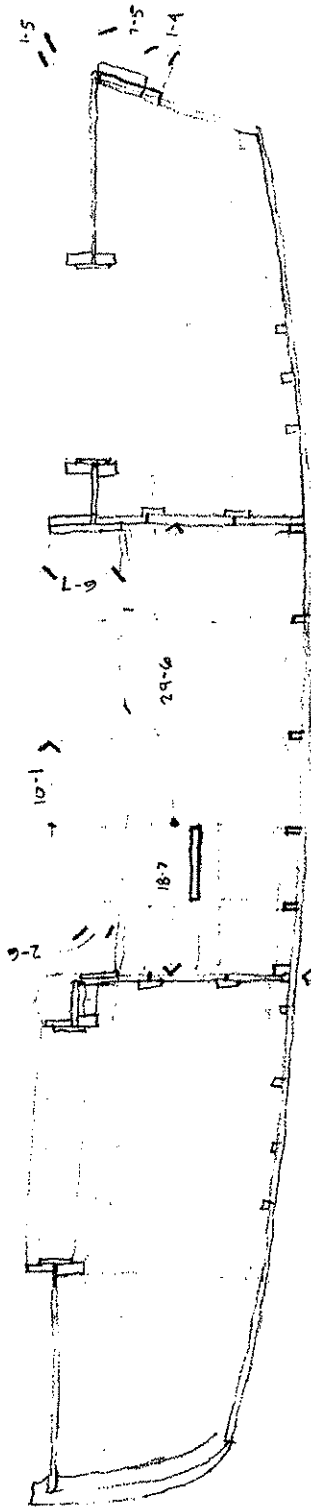


1 3/4 x 3/8

5-0
4-4
4-3

GLEN
T. BLOCH
8.13.03

HATCH BEAM IS CONT.
DECK BM. FRAMES INTO
HATCH BM.



SCANTLINGS

PLANKING = 1/2"

RUBRAL = 3/4 x 1/4

DECK = 1 3/8" WIDE

TIMBER = 7/8"

FRAMES 1/4 x 7/8

FLOORS 1/4 x 7/8

CHINE /

PK BDS, 5" x 5/8" (3/4" SPACING)

RISE = 2 1/4 x 3/4

SHELF = 3" x 3/8"

CLAMP = 3 x 1 1/4

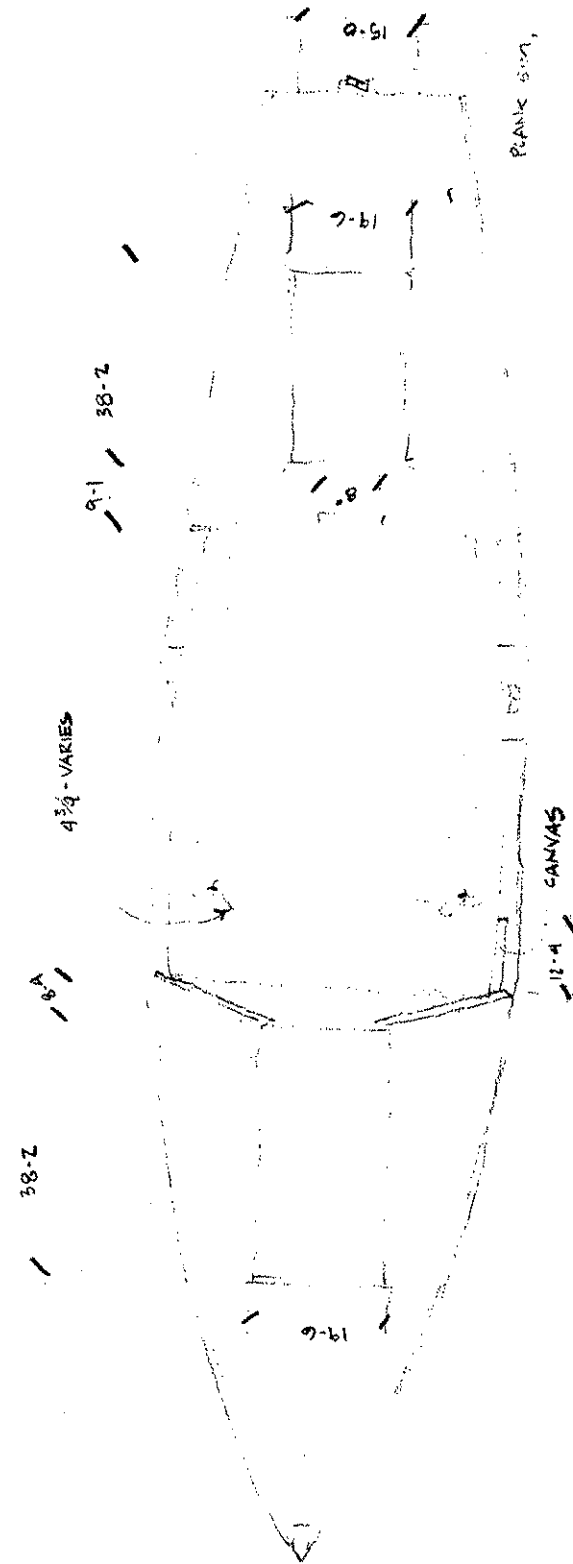
~~DECK PLANKS~~

DECK BEAM = 7/8"

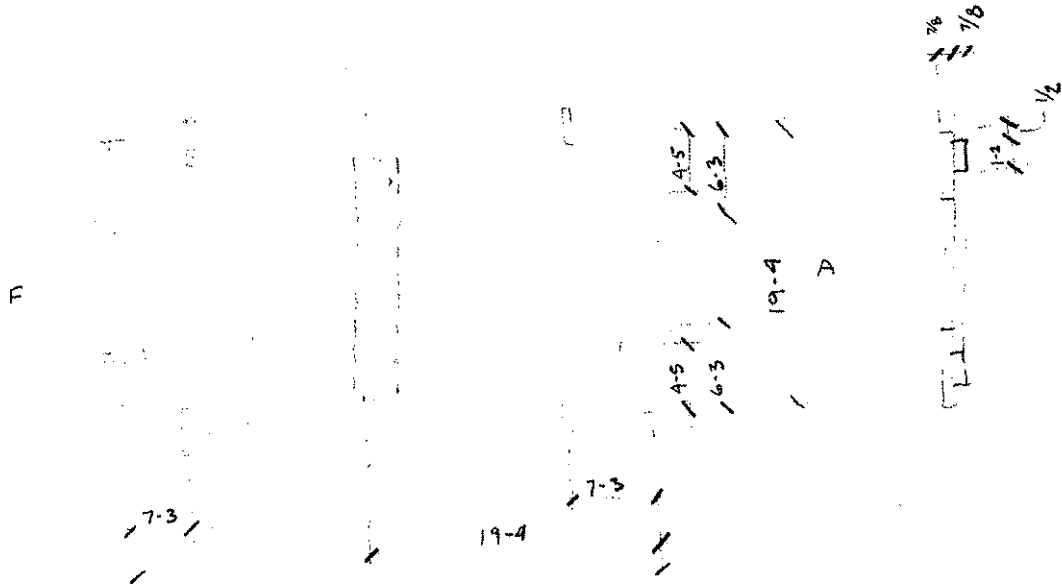
CANVAS SIM.
TO EDIT

SPLASH GUARD

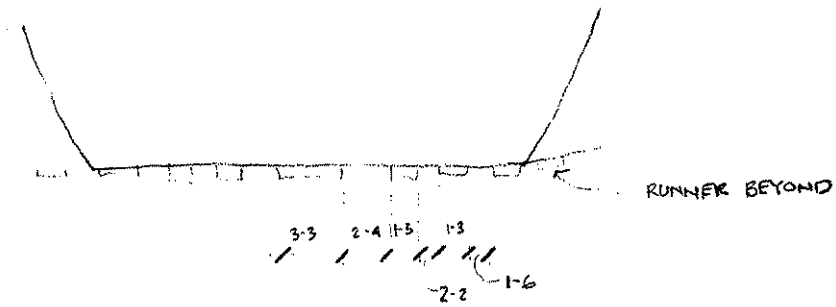
GLEN
T. BLOCH
8.13.03



GLEN
T. BLOCH
8-13-03

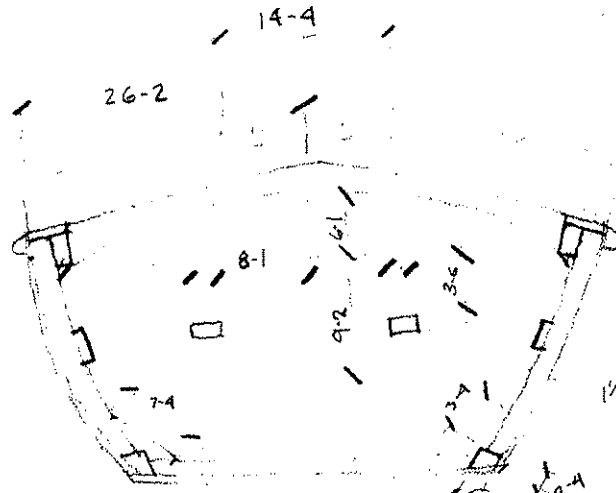


FORWARD HATCH COVER



BOTTOM RUNNERS

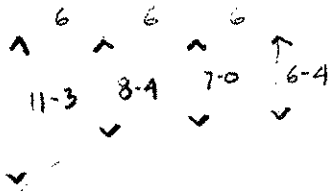
GLEN
 T. BLOCH
 8-13-03



2-0 x 3/4 (BEVELED EDGES)

1/2 x 2 1/2 x 3/8 3/8 7/8

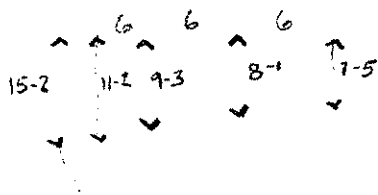
SECTION FRWD OF THWART, VIEW FRWD.



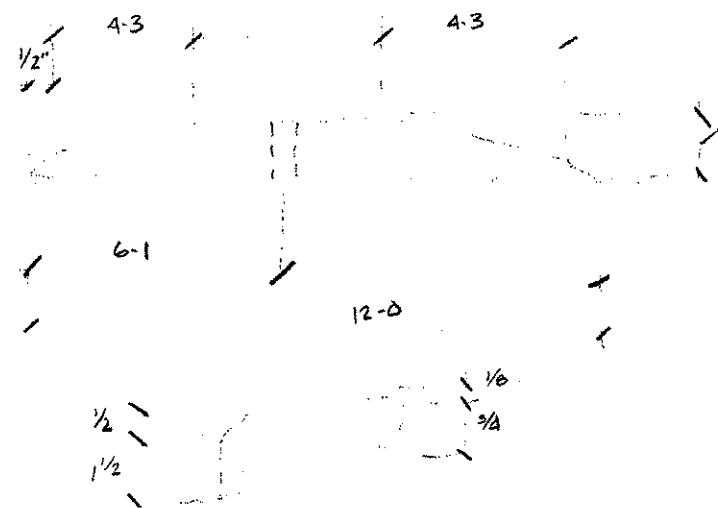
DECK FRWD OF FRWD HATCH



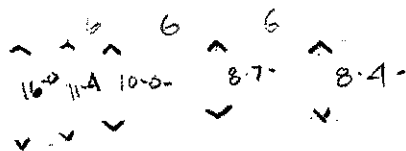
HATCH



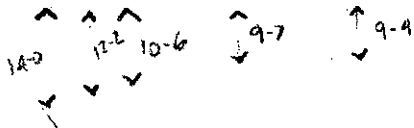
DECK AT FRWD. BKHD.



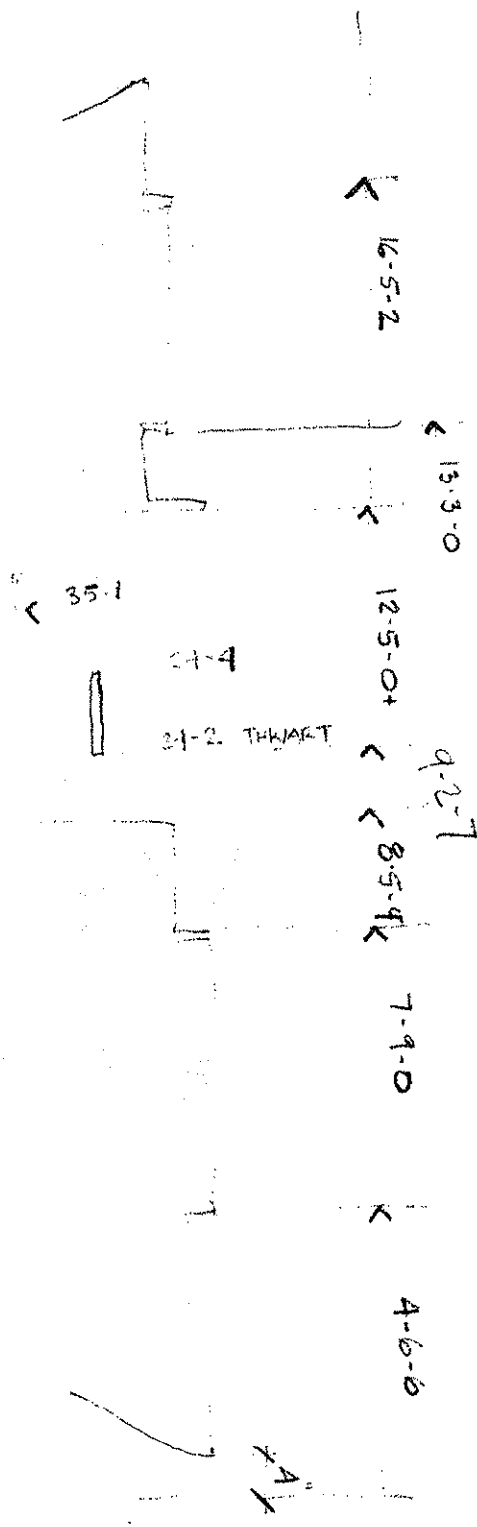
OAR LOCK PAD



DECK AT AFT BKHD.



DECK AT AFT HATCH



12-4 DECK

12-2 DECK
9-7 HATCH

9-2 HATCH
11-3 COMBING
11-2 DECK
7-1 COMBING

10-1X DECK

9-7 DECK
7-5 HATCH

6-5 HATCH
8-5 DECK

55-4

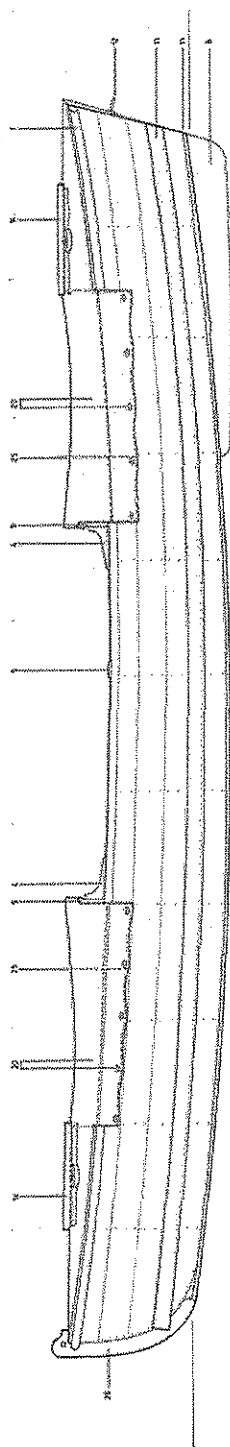
STONE

NOTES

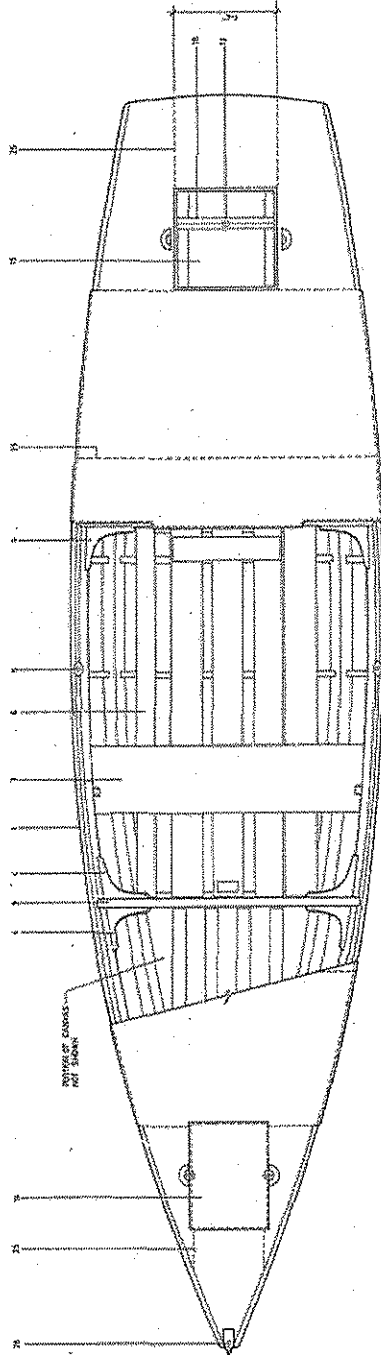
1. DIMENSIONAL CONTOURS WERE USED TO OBTAIN DIM. DIMENSIONS AND ANGLES. DIMENSIONS ARE IN INCHES UNLESS NOTED OTHERWISE.
2. THE SHIP'S HULL WERE TO BE BUILT WITH 1/2" RIBS WITH 2" SPACING.
3. THE SHIP'S HULL WERE TO BE BUILT WITH 1/2" RIBS WITH 2" SPACING.

REV

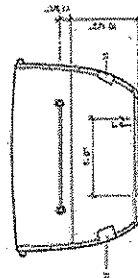
1. HULL
2. HULL
3. HULL
4. HULL - CALIBRATION NOT SHOWN
5. HULL - CALIBRATION NOT SHOWN
6. HULL - CALIBRATION NOT SHOWN
7. HULL - CALIBRATION NOT SHOWN
8. HULL - CALIBRATION NOT SHOWN
9. HULL - CALIBRATION NOT SHOWN
10. HULL - CALIBRATION NOT SHOWN
11. HULL - CALIBRATION NOT SHOWN
12. HULL - CALIBRATION NOT SHOWN
13. HULL - CALIBRATION NOT SHOWN
14. HULL - CALIBRATION NOT SHOWN
15. HULL - CALIBRATION NOT SHOWN
16. HULL - CALIBRATION NOT SHOWN
17. HULL - CALIBRATION NOT SHOWN
18. HULL - CALIBRATION NOT SHOWN
19. HULL - CALIBRATION NOT SHOWN
20. HULL - CALIBRATION NOT SHOWN
21. HULL - CALIBRATION NOT SHOWN
22. HULL - CALIBRATION NOT SHOWN
23. HULL - CALIBRATION NOT SHOWN
24. HULL - CALIBRATION NOT SHOWN
25. HULL - CALIBRATION NOT SHOWN



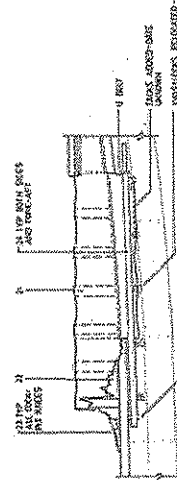
PROFILE - HULL - RECONSTRUCTION



DECK PLAN



TRANSOM - PROJECTED



PROFILE - TRANSOM - RECONSTRUCTION

SCANTLING

- 1. HULL - 1/2" WIDE PINE
- 2. HULL - 1/2" WIDE PINE
- 3. HULL - 1/2" WIDE PINE
- 4. HULL - 1/2" WIDE PINE
- 5. HULL - 1/2" WIDE PINE
- 6. HULL - 1/2" WIDE PINE
- 7. HULL - 1/2" WIDE PINE
- 8. HULL - 1/2" WIDE PINE
- 9. HULL - 1/2" WIDE PINE
- 10. HULL - 1/2" WIDE PINE
- 11. HULL - 1/2" WIDE PINE
- 12. HULL - 1/2" WIDE PINE
- 13. HULL - 1/2" WIDE PINE
- 14. HULL - 1/2" WIDE PINE
- 15. HULL - 1/2" WIDE PINE
- 16. HULL - 1/2" WIDE PINE
- 17. HULL - 1/2" WIDE PINE
- 18. HULL - 1/2" WIDE PINE
- 19. HULL - 1/2" WIDE PINE
- 20. HULL - 1/2" WIDE PINE
- 21. HULL - 1/2" WIDE PINE
- 22. HULL - 1/2" WIDE PINE
- 23. HULL - 1/2" WIDE PINE
- 24. HULL - 1/2" WIDE PINE
- 25. HULL - 1/2" WIDE PINE

FINISHES

- 1. PLANKING - COPPER NAILS
- 2. PLANKING - COPPER NAILS
- 3. PLANKING - COPPER NAILS
- 4. PLANKING - COPPER NAILS
- 5. PLANKING - COPPER NAILS
- 6. PLANKING - COPPER NAILS
- 7. PLANKING - COPPER NAILS
- 8. PLANKING - COPPER NAILS
- 9. PLANKING - COPPER NAILS
- 10. PLANKING - COPPER NAILS
- 11. PLANKING - COPPER NAILS
- 12. PLANKING - COPPER NAILS
- 13. PLANKING - COPPER NAILS
- 14. PLANKING - COPPER NAILS
- 15. PLANKING - COPPER NAILS
- 16. PLANKING - COPPER NAILS
- 17. PLANKING - COPPER NAILS
- 18. PLANKING - COPPER NAILS
- 19. PLANKING - COPPER NAILS
- 20. PLANKING - COPPER NAILS
- 21. PLANKING - COPPER NAILS
- 22. PLANKING - COPPER NAILS
- 23. PLANKING - COPPER NAILS
- 24. PLANKING - COPPER NAILS
- 25. PLANKING - COPPER NAILS

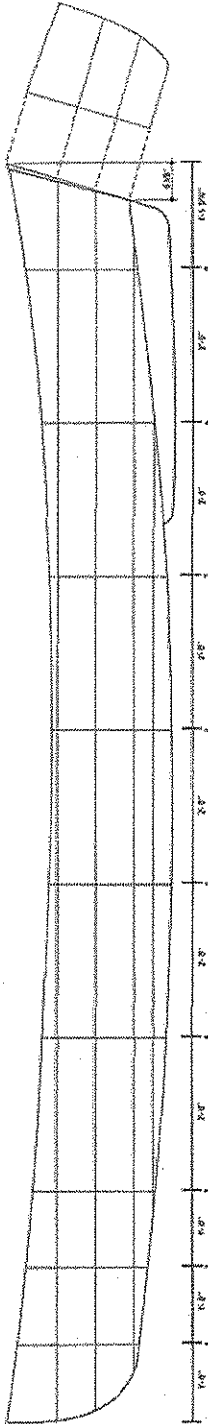
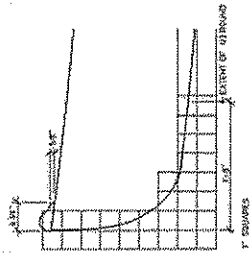
THE STONE BOAT
GALLOWAY TYPE CATARACT BOAT
BUILT BY POLIHOI BOAT CO., c. 1988

HEMELHA

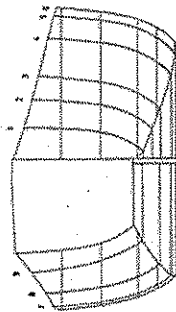
FRAME OF STONE BOAT
DRAWN AND REPRODUCED BY DOG BROWN
JUNE 1988

NOTES

1. THE STONE BOAT WAS MEASURED IN FOR GROUND.
2. THERE WAS NO KICKER OR KICKER ON THE STAR BOARD.
3. THE STONE BOAT WAS MEASURED IN FOR GROUND.
4. THERE WAS NO KICKER OR KICKER ON THE STAR BOARD.
5. THE STONE BOAT WAS MEASURED IN FOR GROUND.
6. THERE WAS NO KICKER OR KICKER ON THE STAR BOARD.
7. THE STONE BOAT WAS MEASURED IN FOR GROUND.
8. THERE WAS NO KICKER OR KICKER ON THE STAR BOARD.
9. THE STONE BOAT WAS MEASURED IN FOR GROUND.
10. THERE WAS NO KICKER OR KICKER ON THE STAR BOARD.
11. THE STONE BOAT WAS MEASURED IN FOR GROUND.
12. THERE WAS NO KICKER OR KICKER ON THE STAR BOARD.
13. THE STONE BOAT WAS MEASURED IN FOR GROUND.
14. THERE WAS NO KICKER OR KICKER ON THE STAR BOARD.
15. THE STONE BOAT WAS MEASURED IN FOR GROUND.
16. THERE WAS NO KICKER OR KICKER ON THE STAR BOARD.
17. THE STONE BOAT WAS MEASURED IN FOR GROUND.
18. THERE WAS NO KICKER OR KICKER ON THE STAR BOARD.
19. THE STONE BOAT WAS MEASURED IN FOR GROUND.
20. THERE WAS NO KICKER OR KICKER ON THE STAR BOARD.
21. THE STONE BOAT WAS MEASURED IN FOR GROUND.
22. THERE WAS NO KICKER OR KICKER ON THE STAR BOARD.
23. THE STONE BOAT WAS MEASURED IN FOR GROUND.
24. THERE WAS NO KICKER OR KICKER ON THE STAR BOARD.
25. THE STONE BOAT WAS MEASURED IN FOR GROUND.
26. THERE WAS NO KICKER OR KICKER ON THE STAR BOARD.
27. THE STONE BOAT WAS MEASURED IN FOR GROUND.
28. THERE WAS NO KICKER OR KICKER ON THE STAR BOARD.
29. THE STONE BOAT WAS MEASURED IN FOR GROUND.
30. THERE WAS NO KICKER OR KICKER ON THE STAR BOARD.
31. THE STONE BOAT WAS MEASURED IN FOR GROUND.
32. THERE WAS NO KICKER OR KICKER ON THE STAR BOARD.
33. THE STONE BOAT WAS MEASURED IN FOR GROUND.
34. THERE WAS NO KICKER OR KICKER ON THE STAR BOARD.
35. THE STONE BOAT WAS MEASURED IN FOR GROUND.
36. THERE WAS NO KICKER OR KICKER ON THE STAR BOARD.
37. THE STONE BOAT WAS MEASURED IN FOR GROUND.
38. THERE WAS NO KICKER OR KICKER ON THE STAR BOARD.
39. THE STONE BOAT WAS MEASURED IN FOR GROUND.
40. THERE WAS NO KICKER OR KICKER ON THE STAR BOARD.
41. THE STONE BOAT WAS MEASURED IN FOR GROUND.
42. THERE WAS NO KICKER OR KICKER ON THE STAR BOARD.
43. THE STONE BOAT WAS MEASURED IN FOR GROUND.
44. THERE WAS NO KICKER OR KICKER ON THE STAR BOARD.
45. THE STONE BOAT WAS MEASURED IN FOR GROUND.
46. THERE WAS NO KICKER OR KICKER ON THE STAR BOARD.
47. THE STONE BOAT WAS MEASURED IN FOR GROUND.
48. THERE WAS NO KICKER OR KICKER ON THE STAR BOARD.
49. THE STONE BOAT WAS MEASURED IN FOR GROUND.
50. THERE WAS NO KICKER OR KICKER ON THE STAR BOARD.
51. THE STONE BOAT WAS MEASURED IN FOR GROUND.
52. THERE WAS NO KICKER OR KICKER ON THE STAR BOARD.
53. THE STONE BOAT WAS MEASURED IN FOR GROUND.
54. THERE WAS NO KICKER OR KICKER ON THE STAR BOARD.
55. THE STONE BOAT WAS MEASURED IN FOR GROUND.
56. THERE WAS NO KICKER OR KICKER ON THE STAR BOARD.
57. THE STONE BOAT WAS MEASURED IN FOR GROUND.
58. THERE WAS NO KICKER OR KICKER ON THE STAR BOARD.
59. THE STONE BOAT WAS MEASURED IN FOR GROUND.
60. THERE WAS NO KICKER OR KICKER ON THE STAR BOARD.
61. THE STONE BOAT WAS MEASURED IN FOR GROUND.
62. THERE WAS NO KICKER OR KICKER ON THE STAR BOARD.
63. THE STONE BOAT WAS MEASURED IN FOR GROUND.
64. THERE WAS NO KICKER OR KICKER ON THE STAR BOARD.
65. THE STONE BOAT WAS MEASURED IN FOR GROUND.
66. THERE WAS NO KICKER OR KICKER ON THE STAR BOARD.
67. THE STONE BOAT WAS MEASURED IN FOR GROUND.
68. THERE WAS NO KICKER OR KICKER ON THE STAR BOARD.
69. THE STONE BOAT WAS MEASURED IN FOR GROUND.
70. THERE WAS NO KICKER OR KICKER ON THE STAR BOARD.
71. THE STONE BOAT WAS MEASURED IN FOR GROUND.
72. THERE WAS NO KICKER OR KICKER ON THE STAR BOARD.
73. THE STONE BOAT WAS MEASURED IN FOR GROUND.
74. THERE WAS NO KICKER OR KICKER ON THE STAR BOARD.
75. THE STONE BOAT WAS MEASURED IN FOR GROUND.
76. THERE WAS NO KICKER OR KICKER ON THE STAR BOARD.
77. THE STONE BOAT WAS MEASURED IN FOR GROUND.
78. THERE WAS NO KICKER OR KICKER ON THE STAR BOARD.
79. THE STONE BOAT WAS MEASURED IN FOR GROUND.
80. THERE WAS NO KICKER OR KICKER ON THE STAR BOARD.
81. THE STONE BOAT WAS MEASURED IN FOR GROUND.
82. THERE WAS NO KICKER OR KICKER ON THE STAR BOARD.
83. THE STONE BOAT WAS MEASURED IN FOR GROUND.
84. THERE WAS NO KICKER OR KICKER ON THE STAR BOARD.
85. THE STONE BOAT WAS MEASURED IN FOR GROUND.
86. THERE WAS NO KICKER OR KICKER ON THE STAR BOARD.
87. THE STONE BOAT WAS MEASURED IN FOR GROUND.
88. THERE WAS NO KICKER OR KICKER ON THE STAR BOARD.
89. THE STONE BOAT WAS MEASURED IN FOR GROUND.
90. THERE WAS NO KICKER OR KICKER ON THE STAR BOARD.
91. THE STONE BOAT WAS MEASURED IN FOR GROUND.
92. THERE WAS NO KICKER OR KICKER ON THE STAR BOARD.
93. THE STONE BOAT WAS MEASURED IN FOR GROUND.
94. THERE WAS NO KICKER OR KICKER ON THE STAR BOARD.
95. THE STONE BOAT WAS MEASURED IN FOR GROUND.
96. THERE WAS NO KICKER OR KICKER ON THE STAR BOARD.
97. THE STONE BOAT WAS MEASURED IN FOR GROUND.
98. THERE WAS NO KICKER OR KICKER ON THE STAR BOARD.
99. THE STONE BOAT WAS MEASURED IN FOR GROUND.
100. THERE WAS NO KICKER OR KICKER ON THE STAR BOARD.



HALF BREADTH PLAN



BOAT PLAN

TABLE OF DIMENSIONS

STATION	NO.	W. OF CENTERLINE	DEPTH OF KEEL	DEPTH OF GUNWALE	DEPTH OF DECK	HEIGHT OF GUNWALE ABOVE DECK	HEIGHT OF DECK ABOVE KEEL	TOTAL HEIGHT
1								
2								
3								
4								
5								
6								
7								
8								
9								
10								
11								
12								
13								
14								
15								
16								
17								
18								
19								
20								
21								
22								
23								
24								
25								

Copyright © 1924, 1925, 1926, 1927, 1928, 1929, 1930, 1931, 1932, 1933, 1934, 1935, 1936, 1937, 1938, 1939, 1940, 1941, 1942, 1943, 1944, 1945, 1946, 1947, 1948, 1949, 1950, 1951, 1952, 1953, 1954, 1955, 1956, 1957, 1958, 1959, 1960, 1961, 1962, 1963, 1964, 1965, 1966, 1967, 1968, 1969, 1970, 1971, 1972, 1973, 1974, 1975, 1976, 1977, 1978, 1979, 1980, 1981, 1982, 1983, 1984, 1985, 1986, 1987, 1988, 1989, 1990, 1991, 1992, 1993, 1994, 1995, 1996, 1997, 1998, 1999, 2000, 2001, 2002, 2003, 2004, 2005, 2006, 2007, 2008, 2009, 2010, 2011, 2012, 2013, 2014, 2015, 2016, 2017, 2018, 2019, 2020, 2021, 2022, 2023, 2024, 2025, 2026, 2027, 2028, 2029, 2030, 2031, 2032, 2033, 2034, 2035, 2036, 2037, 2038, 2039, 2040, 2041, 2042, 2043, 2044, 2045, 2046, 2047, 2048, 2049, 2050, 2051, 2052, 2053, 2054, 2055, 2056, 2057, 2058, 2059, 2060, 2061, 2062, 2063, 2064, 2065, 2066, 2067, 2068, 2069, 2070, 2071, 2072, 2073, 2074, 2075, 2076, 2077, 2078, 2079, 2080, 2081, 2082, 2083, 2084, 2085, 2086, 2087, 2088, 2089, 2090, 2091, 2092, 2093, 2094, 2095, 2096, 2097, 2098, 2099, 2100.

THE STONE BOAT
GALLOWAY TYPE CATARACT BOAT
BUILT BY POLLOCK BOAT CO., c. 1908
DESIGNED BY
PATTERSON & CO., ST. LOUIS, MO.
SCALE 1/8" = 1'

Grand Canyon National Park - Small Craft Collection
 Documentation Project - August 8 - 13, 2003

L.O.A. 16'-5 ³/₁₆"

Boat Name: STONE

Catalog No.: _____

Acq. No.: GRCA-

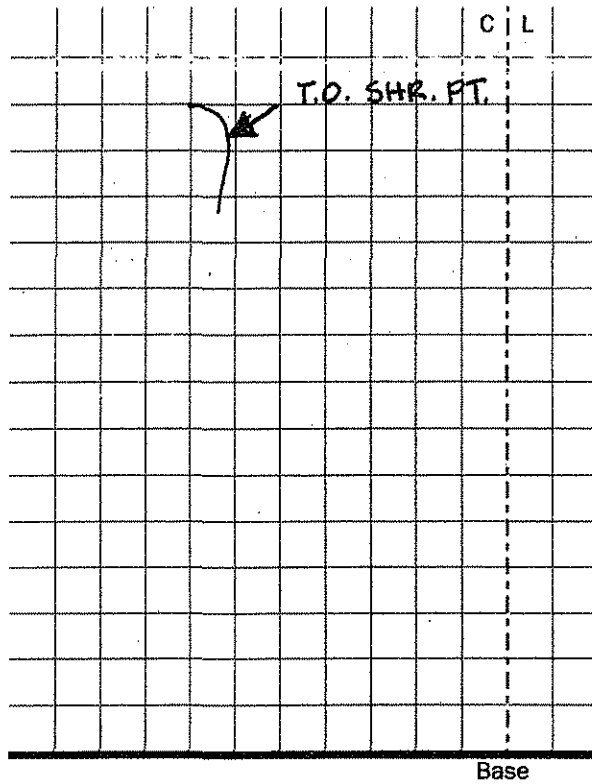
Station No.: _____
 STATIONS IN FEET
 FROM BOW (HALF ROUND)

Station Notes:

CANVAS HATCH COVERS SEEM TO HAVE SUPPORT BATTENS

- 1
- 2
- 3
- 4
- 5
- 6
- 7
- 8
- 9
- 10
- 11
- 12
- 13
- 14
- 15
- 16

Point	Vert.	Horz.
Rabbet		
Keel		0-0



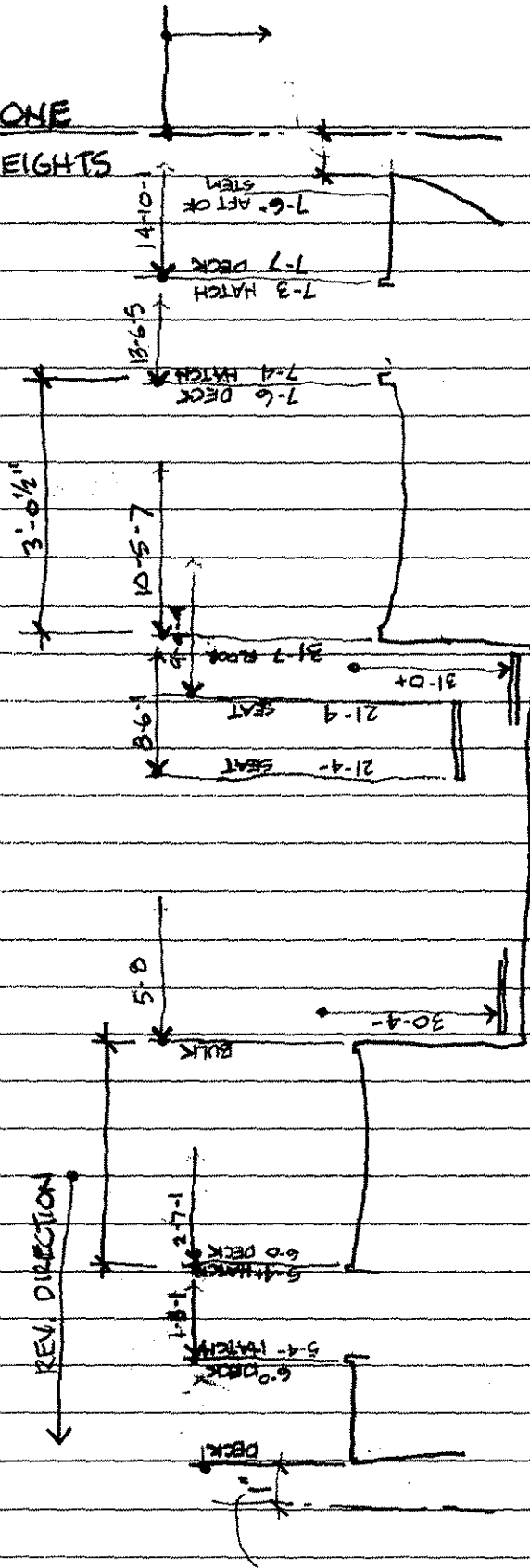
Measurement Notes:

- PLANK 3 PTS. ARE ACTUAL AT TOP OF METAL PLATE
- SHEAR POSITION VARIES - HIGH AT BOW & STERN

Measured by: TODD BLOCH, CAMERON STAVELEY Date: AUG. 2

STONE

HEIGHTS



Grand Canyon National Park – Small Craft Collection
Documentation Project – August 8 – 13, 2003

Boat Name: STONE

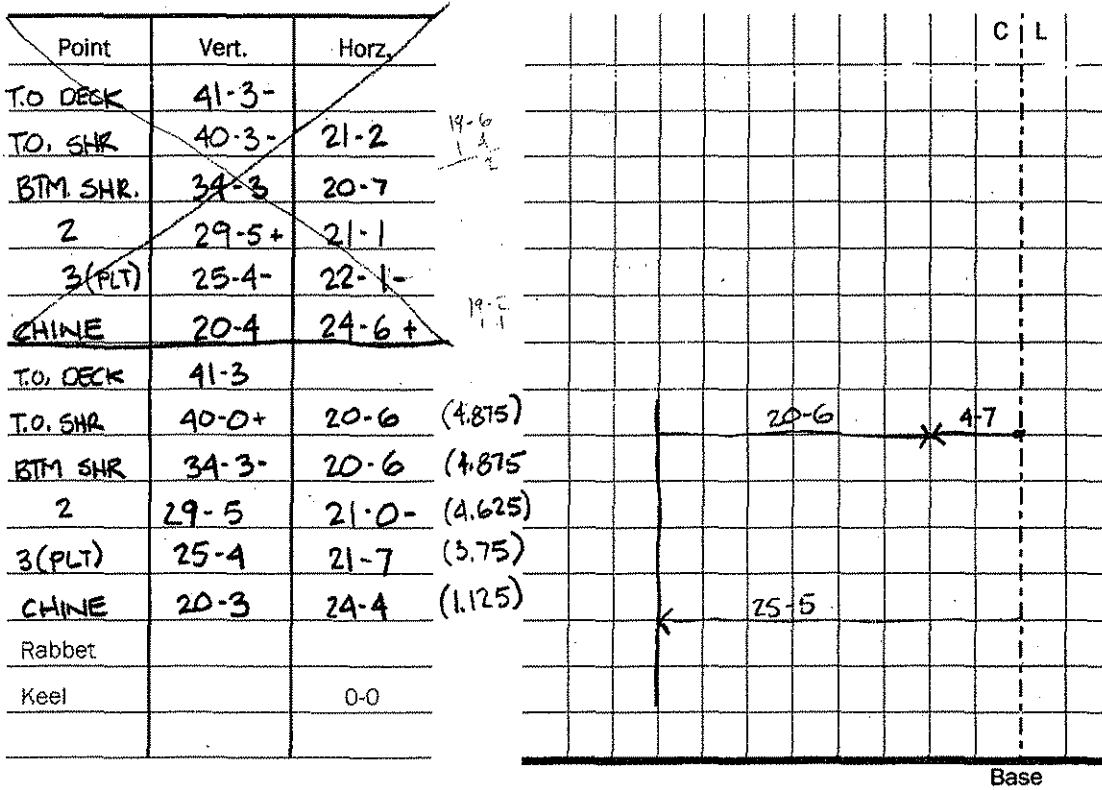
Catalog No.: _____

Acq. No.: GRCA-

Station No.: 1

Station Notes:

BASE OFFSET = 25-5



Measurement Notes:

Measured by: _____ Date: _____

Grand Canyon National Park – Small Craft Collection
 Documentation Project – August 8 – 13, 2003

Boat Name: STONE

Catalog No.: _____

Acq. No.: GRCA-

Station No.: 2

ADI, TWD, BOW 2-4

Station Notes:

BASE OFFSET = 26-1

Point	Vert.	Horz.											C L
BECK OFF HATCH	41-3+												
T.O. SHR.	39-0+	17-6	(8.375)										
BTM SHR.	33-4-	18-0-	(8.125)										
2	28-3+	18-4-	(7.625)										
3(PLT.)	24-1	19-4+	(6.625)										
CHWE	19-2	22-6+	(3.375)										
Rabbit													
Keel		0-0											

Base

Measurement Notes:

Measured by: _____ Date: _____

Grand Canyon National Park – Small Craft Collection
 Documentation Project – August 8 – 13, 2003

Boat Name: STONE

Catalog No.: _____

Acq. No.: GRCA -

Station No.: 3

Station Notes:

BASE OFFSET 25-7

31-A

Point	Vert.	Horz.																C	L
T.O. HATCH	39-1																		
T.O. SHR	36-6	12-6+	(13.125)																
BTM. SHR	32-0	12-7+	(13)																
2	26-6	13-6+	(12.125)																
3	22-3+	15-0	(10.875)																
CHINE	17-6+	18-0+	(7.875)																
Rabbit																			
Keel		0-0																	

Base

Measurement Notes:

Measured by: _____ Date: _____

Grand Canyon National Park – Small Craft Collection
 Documentation Project – August 8 – 13, 2003

Boat Name: STONE

Catalog No.: _____

Acq. No.: GRCA-

Station No.: 4

Station Notes:

BASE OFFSET : 25-3

SHEAR POSITION CHANGES TO JOINT AT RAIL/PLANK

Point	Vert.	Horz.										C	L
T.O. SHR	35-3-	8-5	(16.75)										
BTM SHR	31-2-	9-0	(16.375)										
2	25-7-	9-7+	(15.5)										
3	21-2	11-2+	(14.125)										
CHINE	16-5	14-3+	(11)										
Rabbet													
Keel		0-0											

Base

Measurement Notes:

Measured by: _____ Date: _____

Grand Canyon National Park – Small Craft Collection
Documentation Project – August 8 – 13, 2003

Boat Name: STONE

Catalog No.: _____

Acq. No.: GRCA -

Station No.: b

Station Notes:

BASE OFFSET = 25-2

41-7
1-1

Point	Vert.	Horz.											C	L
T.O. BULKHD.	40-6-													
T.O. SHR	35-0-	4-0-	(21.25)											
BTM. SHR	29-7+	4-5-	(20.625)											
2	24-6	5-3+	(19.875)											
3	20-3	6-5+	(18.625)											
CHINE	15-7	9-6	(15.5)											
Rabbit														
Keel		0-0												

Base

Measurement Notes:

Measured by: _____ Date: _____

Grand Canyon National Park - Small Craft Collection
Documentation Project - August 8 - 13, 2003

Boat Name: STONE

Catalog No.: _____

Acq. No.: GRCA -

Station No.: 8

Station Notes:

BASE OFFSET = 25-3+

Point	Vert.	Horz.													C	L
TO. INNER RAIL	<u>(35-0+</u> ^{3A}	<u>3-7-</u>	(21.5)													
T.O. SHR.	<u>34-3+</u>	<u>2-3-</u>	(23)													
BTM. SHR	<u>29-1-</u>	<u>2-4-</u>	(22.875)													
2	<u>24-3</u>	<u>3-2+</u>	(22.125)													
3	<u>20-5</u>	<u>4-3</u>	(21)													
CHINE	<u>15-2+</u>	<u>7-6-</u>	(17.625)													
Rabbet																
Keel			0-0													

Measurement Notes:

Measured by: _____ Date: _____

Grand Canyon National Park – Small Craft Collection
 Documentation Project – August 8 – 13, 2003

Boat Name: STONE

Catalog No.: _____

Acq. No.: GRCA -

Station No.: 10

Station Notes:

BASE OFFSET = 25.5

Point	Vert.	Horz.												C	L
T	34-0+														
T.O. SHR.	33-6	2-6	(22.875)												
BTM. SHR.	29-4-	2-3-	(23.25)												
2	25-1+	3-0+	(22.625)												
3	21-6-	3-7+	(21.75)												
CHINE	16-0	7-1-	(18.5)												
Rabbit															
Keel		0-0													

Base

Measurement Notes:

Measured by: _____ Date: _____

Grand Canyon National Park – Small Craft Collection
Documentation Project – August 8 – 13, 2003

Boat Name: STONE

Catalog No.: _____

Acq. No.: GRCA -

Station No.: 12

Station Notes:

BASE OFFSET = 26-0

Point	Vert.	Horz.									C	L
T.O. SHR	39-5+	3-5	(22.375)									
BTM. SHR	30-7	4-0-	(22)									
2	26-4+	4-4-	(21.5)									
3	23-1+	5-1	(20.875)									
CHINE	17-1	8-3	(17.625)									
Rabbit												
Keel	15-4-	0-0										

Base

Measurement Notes:

Measured by: _____ Date: _____

Grand Canyon National Park – Small Craft Collection
 Documentation Project – August 8 – 13, 2003

Boat Name: STONE

Catalog No.: _____

Acq. No.: GRCA- _____

Station No.: 14

Station Notes:

BASE OFFSET = 26-1

47-7
1-1
4-8

Point	Vert.	Horz.	C	L
T.O. MATCH COMP.	46-6-			
T.O. SHR	37-4+	6-6 (19.375)		
BTM. SHR	33-3	6-7- (19.25)		
2	28-7+	7-3- (18.75)		
3	25-4	8-1 (18)		
CHINE	19-6	11-1 (15)		
Rabbit				
Keel	15-6+	0-0		

Base

Measurement Notes:

Measured by: _____ Date: _____

Grand Canyon National Park – Small Craft Collection
Documentation Project – August 8 – 13, 2003

Boat Name: STONE

Catalog No.: _____

Acq. No.: GRCA -

Station No.: 15
OFFSET $\frac{5}{8}$ AFT

Station Notes:

BASE OFFSET = 26-6

Point	Vert.	Horz.															C	L
T.O. HATCH	46-1																	
T.O. SHR	39-2	9-2	(17.5)															
BTM. SHR	35-1	9-3	(17.375)															
2	30-4+	9-7	(16.875)															
3	27-1+	10-7	(15.875)															
CHINE	21-6	13-7	(12.875)															
Rabbit																		
Keel		0-0																

Measurement Notes:

FOR KEEL, MEASURE DOWN FROM BTM. OF HULL

Measured by: _____

Date: _____

47-2
1-1

Grand Canyon National Park – Small Craft Collection
Documentation Project – August 8 – 13, 2003

Boat Name: STONE

Catalog No.: _____

Acq. No.: GRCA-

Station No.: 16

Station Notes:

BASE OFFSET = 24-0

43-3
1-1

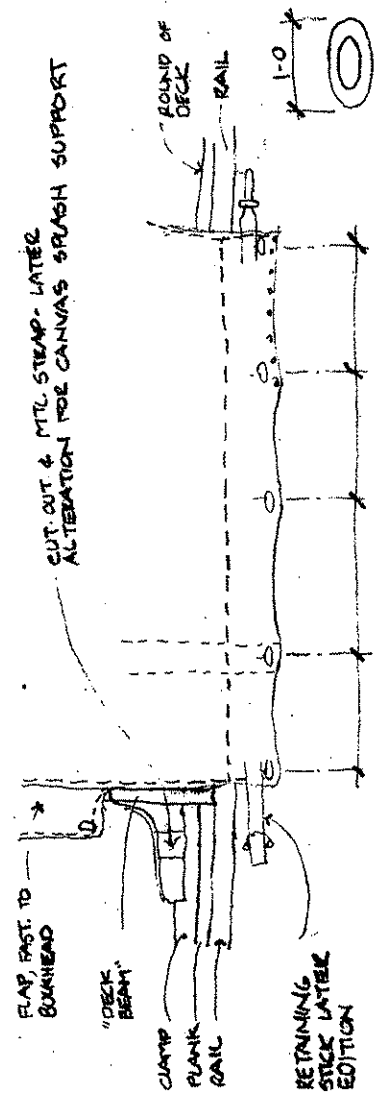
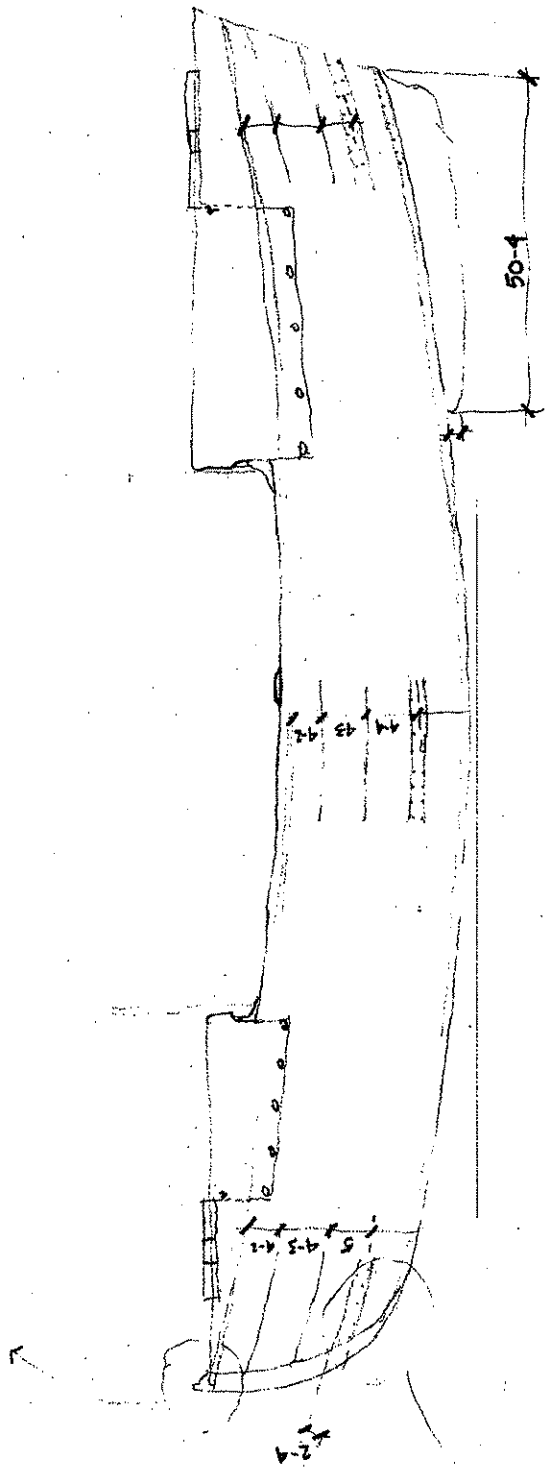
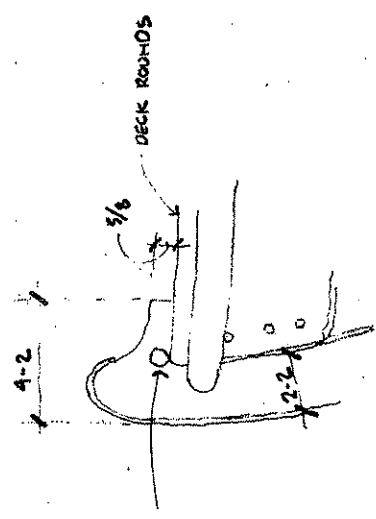
Point	Vert.	Horz.										C	L
TO. DECK	42-2												
T.O. SHR.	40-6-	8-2	(15.75)										
BTM. SHR.	36-4	8-4+	(15.5)										
2	33-6+	9-2+	(14.75)										
3	28-3	10-1+	(13.875)										
CHINE	-	-											
Rabbit													
Keel		0-0											

Base

Measurement Notes:

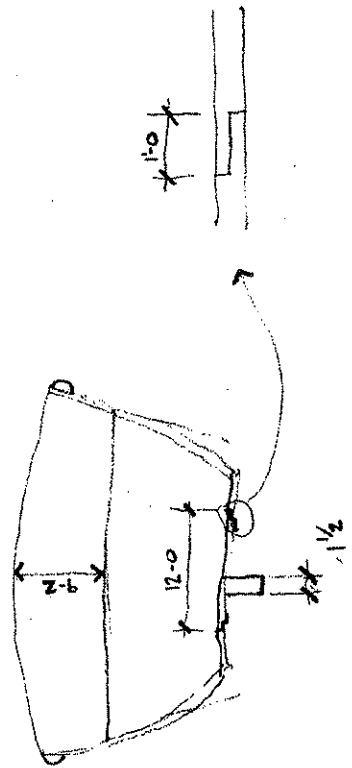
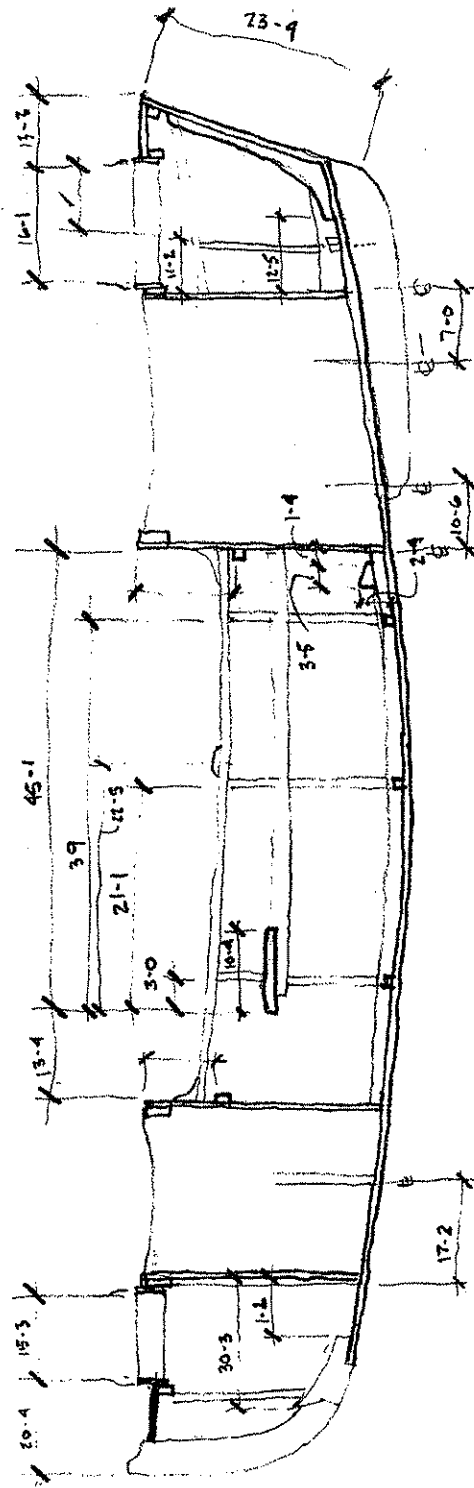
Measured by: _____ Date: _____

STONE
T. BLOCH
8.13.03

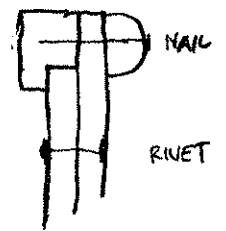
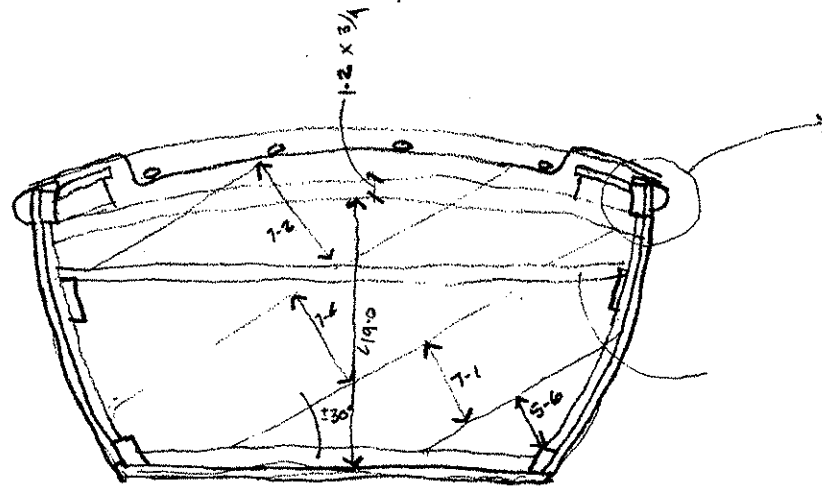


CANNAS CONNECTION, PORT, AFT

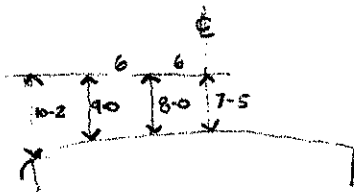
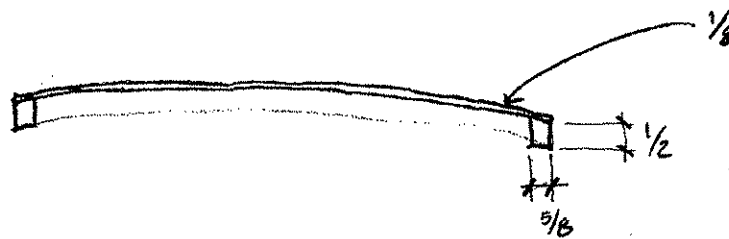
STONE
T. BLOCH
8-15-03



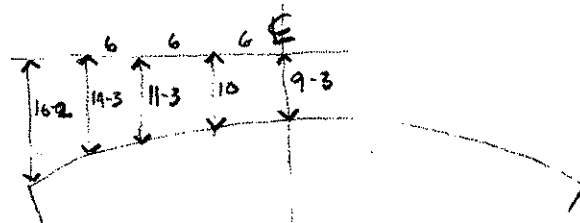
STONE
T. BLOCH
8.13.03



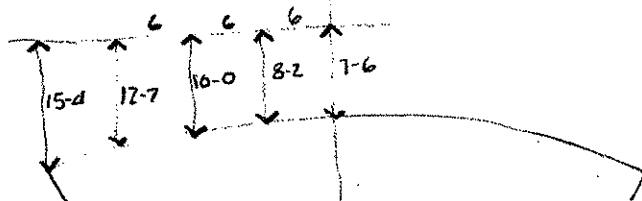
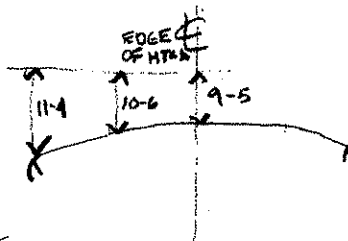
SECTION AFT OF THWART LOOKING FORWARD



DECK CROWN AFT OF
AFT HATCH

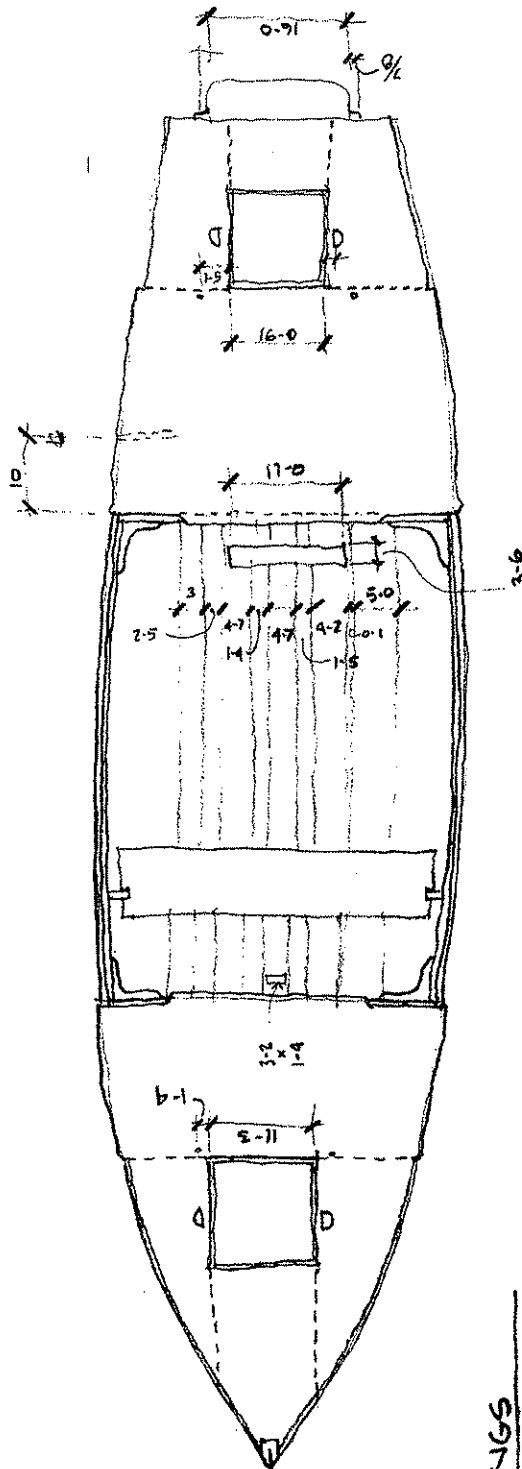


FRWD BULKHD,



AFT BULKHD.

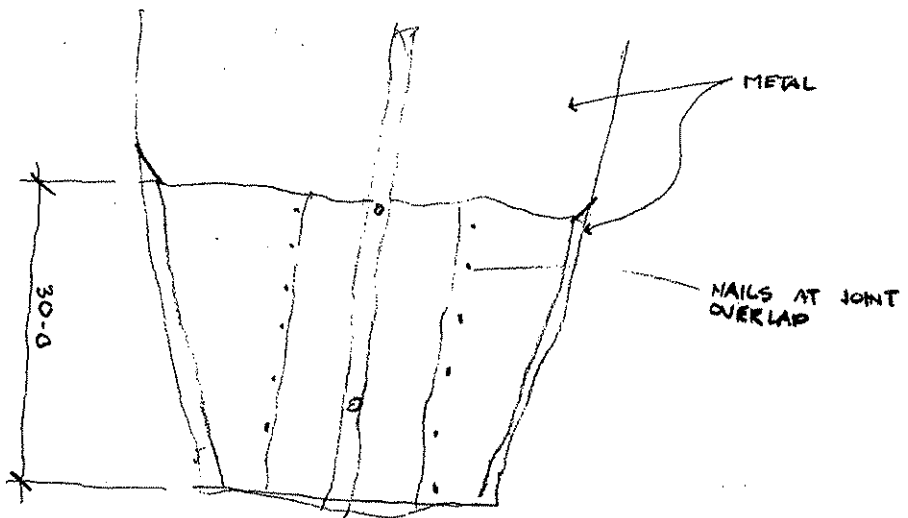
STONE
8-13-03
T. BLOCH



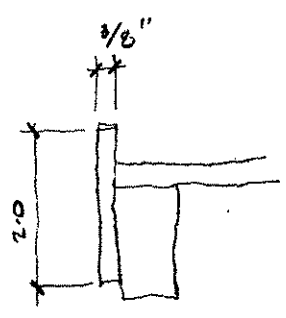
SCANTLINGS

PLANKING	5/8
RUB RAIL	1/4 x 3/4
DECK BEAMS	1/4 x 3/4
FRAMES	7/8 x 3/4
FLOORS	7/8 x 3/4
DECK	?
BOTTOM	5/8
FLOORBO	5/8
THWART	5/8
SWEEP	5/8
CLAMB	1/8 x 1 1/4"
RISER	2 1/4 x 1/2
BUSHHEADS	2 1/4
CHINE	2 1/4 x 1 1/8

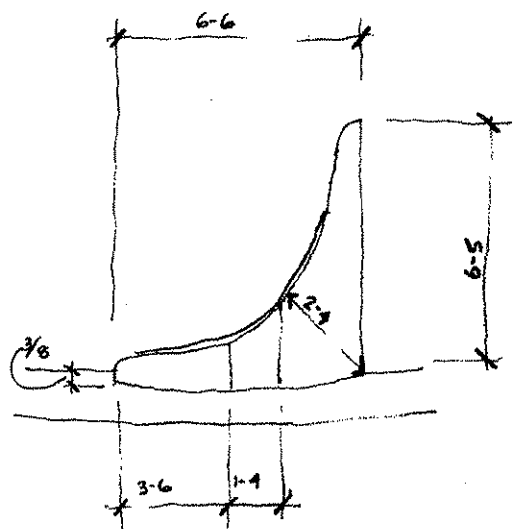
STONE
T. BLOCH
S.B.03



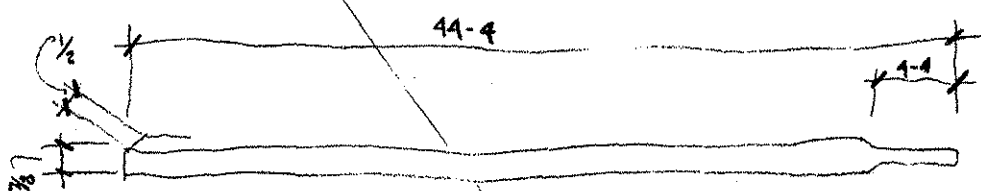
BOTTOM AT STERN



HATCH TRIM



KNEE



BATTEN

