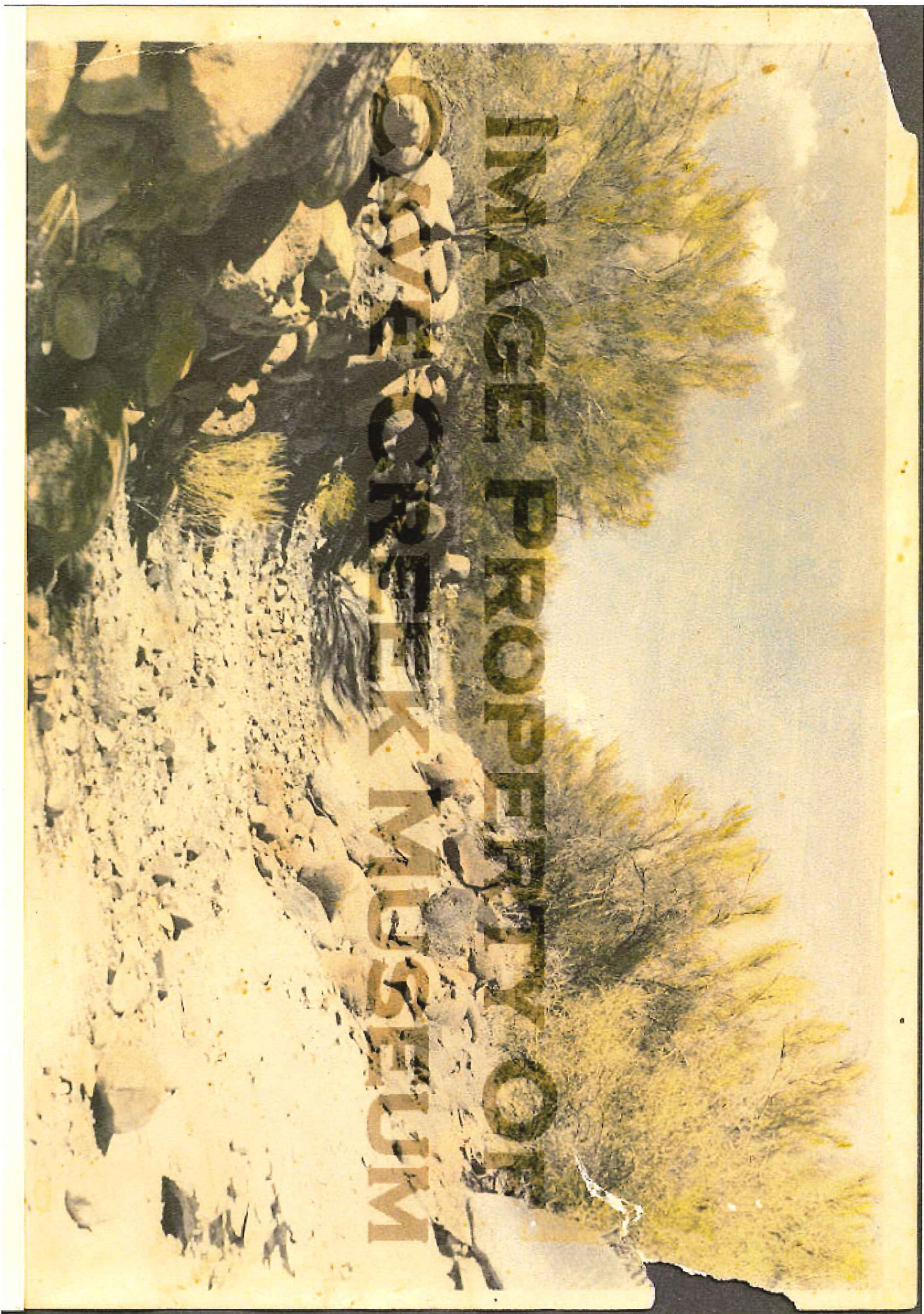


[Print this item:](#) Photograph of Stoneman Military Road through Cave Creek







- Home
- Search
- Browse
- Collection Directory
- Contributing Institutions
- About Collection
- View Collection
- Help

Search  Search Advanced Search

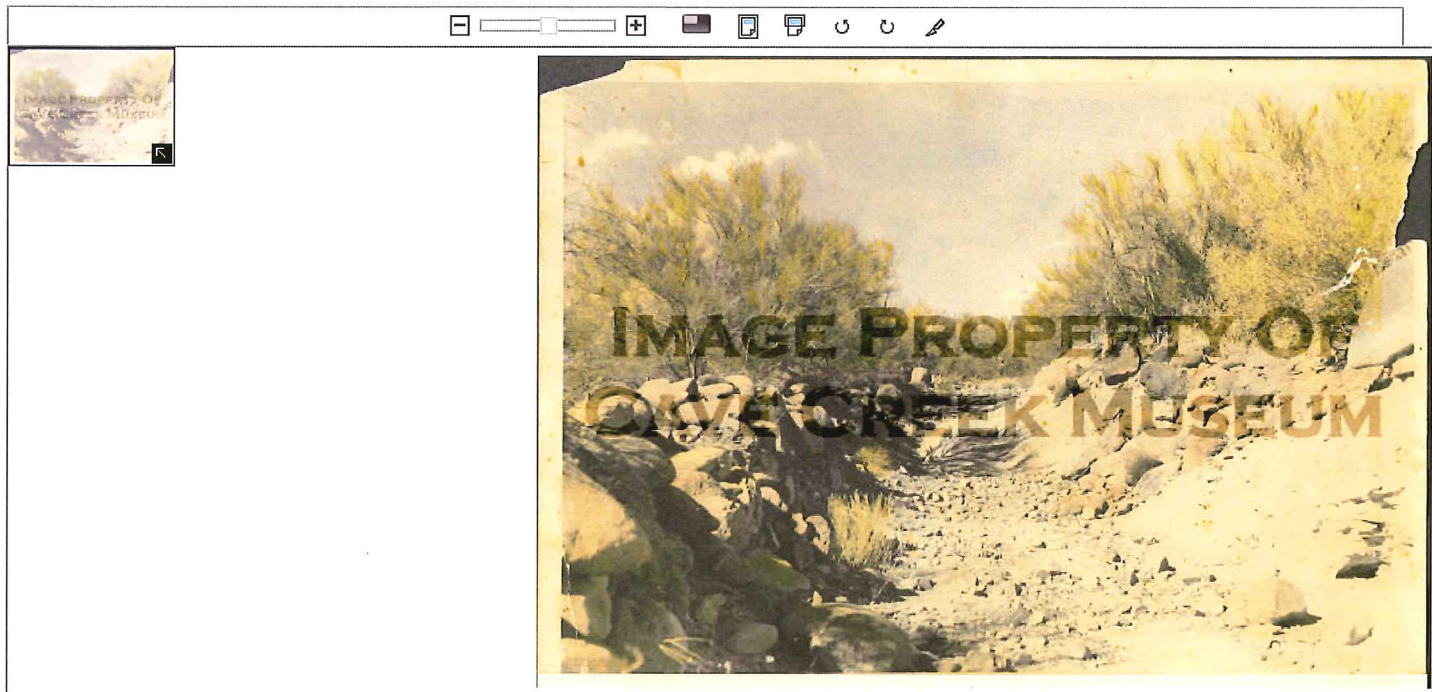
Home » Early Cave Creek, Arizona » Photograph of Stoneman Military Road through Cave Creek

Reference URL Share Rate

### Photograph of Stoneman Military Road through Cave Creek

[View Description](#)

[Print](#)



#### Description

Rating Based on 0 rating(s)

**TITLE** [Photograph of Stoneman Military Road through Cave Creek](#)

**CREATOR** [Unknown](#)

**SUBJECT** [Communication Artifact: Documentary Artifact: Print, Photographic](#)

**Browse Topic** [Military and war](#)

**DESCRIPTION** In 1870's Colonel George Stoneman, commander of army troops in AZ using an old Indian trail built a military road from Ft. McDowell (Phoenix) to Ft. Whipple (Prescott). The road went north from Rio Verde, cutting through the now present McDowell Mountain Regional Park, south of the Carefree Airport and into the north flank of Black Mountain in Cave Creek to New River and Black Canyon City and on to Prescott. This route shortened the distance between the two points, as well as gave the wagon trains at least one other watering place. For twenty years this trail was the preferred method of travel between two of the most active forts in AZ.

**TYPE** [Image](#)

**Exhibit** [Military Road through Cave Creek Exhibit](#)

**RIGHTS MANAGEMENT** All images and documents are the property of Cave Creek Museum. Contact the Cave Creek Museum for specific information concerning rights and reproduction.

**DATE ORIGINAL** [1870](#)

**Time Period** [1870s \(1870-1879\)](#)

**ORIGINAL FORMAT** [Photograph](#)

**DIGITAL IDENTIFIER** [EarlyCCMilitary\\_StonemanRoad2.jpg](#)

**Date Digital** 2007-05

**DIGITAL FORMAT** [JPEG \(Joint Photographic Experts Group\)](#)

**DIGITIZATION SPECIFICATIONS** Image scanned by HP Scanjet 4300C

**REPOSITORY** [Cave Creek Museum](#)

**SORT ORDER** 0050

[Back to top](#)

[Home](#)

[About](#)

[Contact Us](#)

[For ADA assistance, please contact the Braille and Talking Book Library](#)

Powered by CONTENTdm®