

23



VERDE RIVER RUNOFF

MARCH 29, 2014



- HOME
- REGISTER
- VRVNO
- The Verde
- Updates
- History
- Contact



This well-known and very popular canoe and kayak river race follows in the 11 year tradition of the Verde River Canoe Challenge. We have a new name, new sponsors, & new partners.



[Click here](#) for news and updates regarding the race itself and Verde River conditions.



Volunteer! [Click here to volunteer to help](#)

[No kayak? No problem - click for local rentals.](#)

ORGANIZERS



Participant Registration and Categories: [Click Here](#)

Please Note: All registration must be done on-line. No boats may be registered on the day of the race; registration will close on March 25, 2014.

The Verde River Runoff operates under a Special Use Permit from the Prescott National Forest and their cooperation is gratefully acknowledged.



VERDE RIVER RUNOFF

MARCH 29, 2014

[HOME](#)
[REGISTER](#)
[VRVNO](#)
[The Verde](#)
[Updates](#)
[History](#)
[Contact](#)

EVENT HISTORY

The event now known as the Verde River Runoff traces its origins to the Verde River Canoe Challenge sponsored by The Salt River Project and administered as a class project under the direction of Dr. Charles Hammersley of the Northern Arizona University Parks and Recreation Management Program. The first year it was held was 2000 and 27 racers in 18 boats participated. The final year it was held in its original format, there were 104 boats and 138 racers. Nothing succeeds like success. During that 11 year period the race was cancelled only one time (2010) when the water flows rose to unsafe levels during the race weekend. The design of the event focused entirely on the River and there was minimal involvement in those days on the part of the town of Camp Verde. People came to race and to enjoy a morning on the often fast moving, always narrow Verde River. They were not disappointed.

ORGANIZERS



The involvement of NAU as administrator of the event terminated following the March 26, 2011 event and the race was not held during 2012. It had not died but was merely sleeping.



This terrific river event was reborn in 2013 under the umbrella of The Verde Valley River Nature Organization (VRVNO). Last year 133 people in 86 boats participated and had a great experience. Additionally, the Runoff is part of the larger April Verde RiverFest which includes such VRVNO organized events as the [Verde River Poker Run](#) for canoe and kayakers, the [Rails on the River](#) for model train hobbyists, and the [Verde Valley Birding and Nature Festival](#). Also during April, the The Camp Verde Spring Heritage Festival will be celebrated. If you are visiting from out of town, you will find many reasons to come back during April.

The former Verde River Canoe Challenge is alive and well.



Verde River Canoe Challenge Information

Location: The race start is on Route 260, at White Bridge Park, just east of Camp Verde. The end of the race is at Beasley Flats, a National Forest Service Recreation Area approximately 10 miles downriver from the start. A midway check point is located at the Clear Creek parking area.

Past Event Participant Data:

**#	April 1, 2000:	18 boats & 27 racers;
**#	March 31, 2001:	40 boats & 65 racers
**#	March 30, 2002:	52 boats & 79 racers
**#	March 29, 2003:	88 boats & 124 racers
**#	March 27, 2004:	114 boats & 171 racers
**#	April 2, 2005:	94 boats & 142 racers

Event Date: Saturday, April 2, 2005

Event Start Time: 10:00 am /
Shuttles from Beasley Flats begin at 7:30 am. Last shuttle leaves Beasley Flats at 9:30 am.

Event Categories: Recreational Division

- **# Men's solo canoe
- **# Men's tandem canoe
- **# Women's solo canoe
- **# Women's tandem canoe
- **# Coed tandem canoe
- **# Men's Kayak
- **# Women's Kayak



Verde River

Event Categories: Recreational Division

- **# Men's solo canoe
- **# Men's tandem canoe
- **# Women's solo canoe
- **# Women's tandem canoe

- ** Coed tandem canoe
- ** Family canoe (adult and youth 12 or under)
- ** Men's Kayak
- ** Women's Kayak
- ** Inflatables - tandem
- ** Inflatables - solo
- ** Sit-on-tops
- ** Open

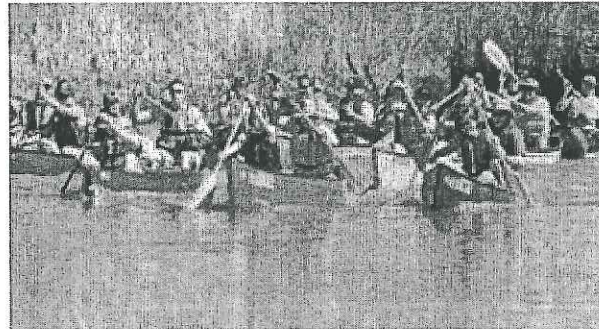
River Gradient: 10 feet per mile

River Difficulty: Novice, Class I, II, & III (depending on water level)

River Flow Levels: minimum 140 cfs / maximum 1,000 cfs

Race Day River Flows:

- ** April 1, 2000: 450 cfs
- ** March 31, 2001: 204 cfs
- ** March 30, 2002: 148 cfs
- ** March 29, 2003: 346 cfs
- ** March 27, 2004: 145 cfs
- ** April 2, 2005: 451 cfs



Current Verde River flow information:

http://az.waterdata.usgs.gov/nwis/uv?site_no=09506000

Online Registration:

<http://www.cvaz.org/parks/canoe%20challenge/canoe%20registration%20form.htm>

Event Sponsor: Camp Verde Parks and Recreation Department, Joseph Perez, Recreation Supervisor, 395 S. Main Street, Camp Verde, AZ (mailing address: PO Box 710, Camp Verde, AZ 86322).

Phone: (928) 567-0535 Fax: (928) 567-1540

E-mail: jperez@cvaz.org Web Site: <http://www.cvaz.org/parks/parkshome.htm>

Permit Required: Special Use Permit, United States Forest Service, Prescott National Forest,

- ** Cortez Office, Bill Cook, 344 S. Cortez, Prescott, AZ, 86303-4398

phone: (928) 443-8071 fax: (928) 443-8008

e-mail: whcook@fs.fed.us

*** Verde Ranger District, Wes Girard, PO Box 670, General Crook Trail, Camp Verde, AZ 86322

Phone: (928) 567-4121 fax: (928) 567-1179

Background Information: This event was initially planned in 1999 but the water level was too low to hold the event. The first year for the Canoe Challenge was 2000. It was modeled after the Adobe Whitewater Club's Mothers Day Race in Pilar, NM. Event insurance has been acquired through the American Canoe Association (ACA). The Event is nationally sanctioned by the American Canoe Association (ACA)

ADA Information: In compliance with the **Americans with Disabilities Act**, this agency/event does not discriminate on the basis of an individual's disability. If special accommodations are required to participate, please notify us during pre-registration.

*** [Forms & Letters](#)

*** [Canoe Challenge Timeline](#)

*** [Verde River Map](#)

*** [Canoe Challenge Logo; 2000; 2001-02; 2003; 2004; 2005](#)

*** [River Description](#)

*** [Photo Gallery: 2000; 2001; 2002](#)

*** [Publicity: 2000; 2000; 2002; 2003](#)

Project Team Organization

Each of the following activities needs a coordinator. The coordinator will assign duties, follow-up on assignments and ensure the committee duties are met by the due dates.

Administration

- *** Prepares entry forms
- *** Tracks pre-registration and registration entries
- *** Submits and tracks U.S. Forest Service special-use permit
- *** Prepares mailing list from whitewater clubs
- *** Submit ADOT permit request
- *** Notify local residents/land owners about the canoe race

Budget

- *** Prepare a complete pro forma budget, include all expenses and revenues.

Evaluation

- *** Develop surveys to evaluate the canoe challenge participants.

- Conduct the survey and tabulate the responses.
- Prepare a report on the results for the Canoe Challenge committee.

Event Safety & Security

- Prepare traffic control (pedestrians and vehicles) plan. Identify all intersections to be blocked off, detours, number of volunteers necessary to implement plan, lost child plan, injured/ill person, fire, and on-river emergency/rescue, and security.
- Determine location for first aid stations (White Bridge, Clear Creek, & Beasley Flats).

River Safety & Rescue

- Prepare river safety information flyer for participants.
- Establish safety requirements for all participants (PFD's etc)
- Prepare a rescue team in conjunction with the County Sheriffs Dept.
- Organize on-river safety boats during race.
- Identify race safety checkpoints (Clear Creek)
- Prepare an equipment list for safety items.

Facilities & Equipment

- Identify all facilities and equipment necessary. Get this information from the other coordinators.
- Identify the sources for acquiring the necessary equipment (business, money, time).
- Acquire traffic cones/barriers for road closures.
- Arrange for award ceremony sound system
- Prepare start and finish lines
- Get stopwatches or timing system
- Set-up race registration desk at the start line.

Personnel/Volunteers

- Identify the total number of volunteers necessary to implement the event.
- Identify the types and dates for training volunteers in necessary skills (specifically traffic control).
- Create a master contact list, name, address, phone, e-mail, for all volunteers.
- Track the attendance and hours for all volunteers.

Program

- Organize the race start and finish locations (distances of race(s))
- Prepare racer identification numbers and provide them to the racers on race day.
- Determine appropriate race award categories

Promotions & Sponsorship

- Identify all potential sponsors and solicit their contributions.
- Write sponsor/donor thank you letters
- Prepare race t-shirts (design and vendor)

- Contact businesses in Northern Arizona with canoe race information flyer
- Prepare canoe race information flyer
- Prepare media release
- Develop marketing plan
- Create and price race awards necessary.

Signage

- Create the following signs: Race Start, Race Finish and mile marker signs and directional signs from the start to finish.
- Determine the number, construction, and cost of signs necessary
- Post signs when required

Transportation

- Prepare a parking plan to handle the cars for spectators and entrants.
- Prepare for parking control with volunteers.
- Prepare a shuttle system to get the entrants to drop off their canoes at put-in drive their vehicle to the take-out and get a shuttle back to the put-in.

[Class]

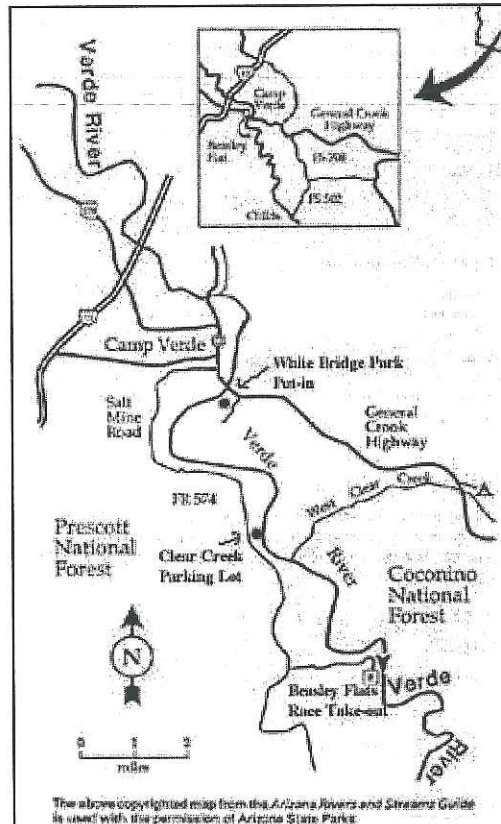


Copyright 2001 Northern Arizona University, ALL RIGHTS RESERVED



Verde River Map

Camp Verde (White Bridge) to Beasley Flats



River Distance: 10 miles

River Difficulty: Class I, II, and III (depending on water level)

River Flow Levels: 300 to 2,000 cfs

[Class] [Verde River Canoe Challenge Information Sheet]



Copyright 2001 Northern Arizona University, ALL RIGHTS RESERVED



Verde River Canoe Challenge River Description White Bridge to Beasley Flats

Mileage: 10 miles

Elevation Change: 3080 to 2980

River Difficulty: Class I, II, and III (depending on river level)

Warnings:

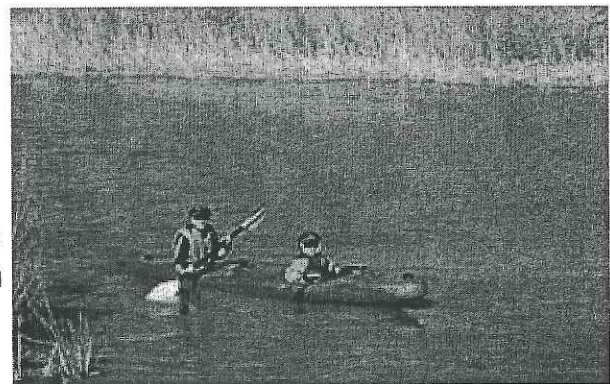
- *** Private land
- *** Undercut river bank, river left, just below confluence with West Clear Creek.

Motorized access points:

- White Bridge (Rte. 260) where it crosses the Verde River.
- Salt Mine Road into Beasley Flats (FR 574 to 527 to 334).
- West Clear Creek, off FR 574.

Downstream from the put-in at the White Bridge, the creek braids and comes together through a series of marshy ruins and small islands. It is peaceful and intimate. Nothing you encounter is higher than a Class II. There is almost always enough water for you to stay inside your boat.

This section is rightly attracting attention from anglers (bass and catfish), bird watchers and recreationists who want a different, pleasant day's outing. Some of the local canoe rental companies may rent you a paddle to paddle your canoe, if you want to concentrate on fishing or looking for birds. Other outfitters will rent you an inflatable kayak and provide you lunch. This trip can be divided into half, if you make arrangements with one of the canoe rental places. They can usually get an access point on private land partway into the trip.



As the trip unfolds, you move closer to the Black Hills. You will also paddle past

some very well-to-do homes.

The General Crook Highway (White Bridge) is shown on the Recreation Opportunity Guide: Verde River map as being located at FRM 69. From here to Sheeps Crossing, at FRM 10. This description will present two different sets of mile notices: FRM, referring to the Recreation Opportunity Guide: Verde River map, and TRM referring to the continuous trip down the Verde from Morgan Ranch.

This entire segment is a restful, pretty and easy paddle down a rural creek. It is an excellent choice for novice paddlers or paddlers with children. It is easily reached from Phoenix, Tucson or Flagstaff by traveling I-17. It is possible to rent canoes and shuttle service in Camp Verde, as well as to make arrangements with outfitters in Flagstaff. The scenery and fishing are both noteworthy. This segment is the one I recommend for your first boat trip on the Verde. It is becoming very popular.

The re-entry of a drainage ditch, river left a little less than six miles into the trip, is well worth exploring. There are springs in here, so there is water always, even when the ditch itself is dry. Below this drainage on river right is the Clear Creek put-in/take-out (off FS574). It has a small dirt parking area and a bathroom. The trail to the river is steep but short.

Below West Clear Creek the river pushes against some high white cliffs and turns right. These cliffs are undercut. That means a swimmer who gets swept up against them could find himself underneath them. The undercut is not very deep, but it would be important for a person who was swept underneath not to panic, but to calmly push off the cliffs to escape.

You are likely to miss the mouth of West Clear Creek at TRM 84, since what water that does flow usually enters without fanfare. From the Verde, the mouth often appears to be just an extensive rock bar on river left. This is another spot where the Forest Service plans to add river bank campgrounds. You move past more cottonwoods and gain sights of Squaw Peak, which is the geographic center of Arizona. The river curves east, then northeast to find a way around Beasley Flats. Hitting another set of cliffs river left, the creek turns south. (The quick water at these cliffs is called "Rollo Uno" or "Numero Uno" by some paddlers.)

You are now paddling along Beasley Flats. There are a number of possible takeouts. Most folk go to the Forest Service river access point, where you can drive right down to the creek.

You are at FRM 59.5 when you reach this access point.

Source: Slingluff, J. (1996). Verde River Recreation Guide. Phoenix, AZ: Golden West Publishing.

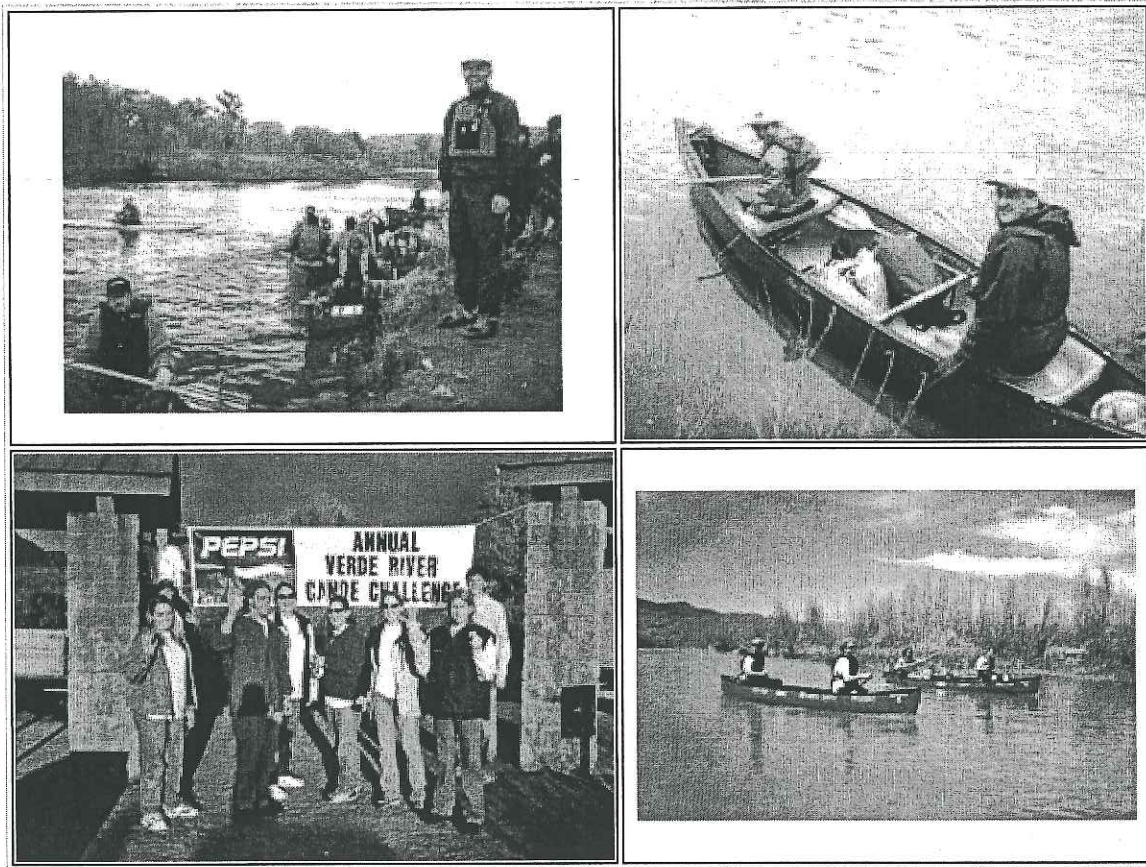
[Class] [Verde River Canoe Challenge Information]



Copyright 2001 Northern Arizona University, ALL RIGHTS RESERVED



Verde River Canoe Challenge 2000 Photos



[\[Class\]](#) [\[Verde River Canoe Challenge Information\]](#) [\[Forms & Letters\]](#)

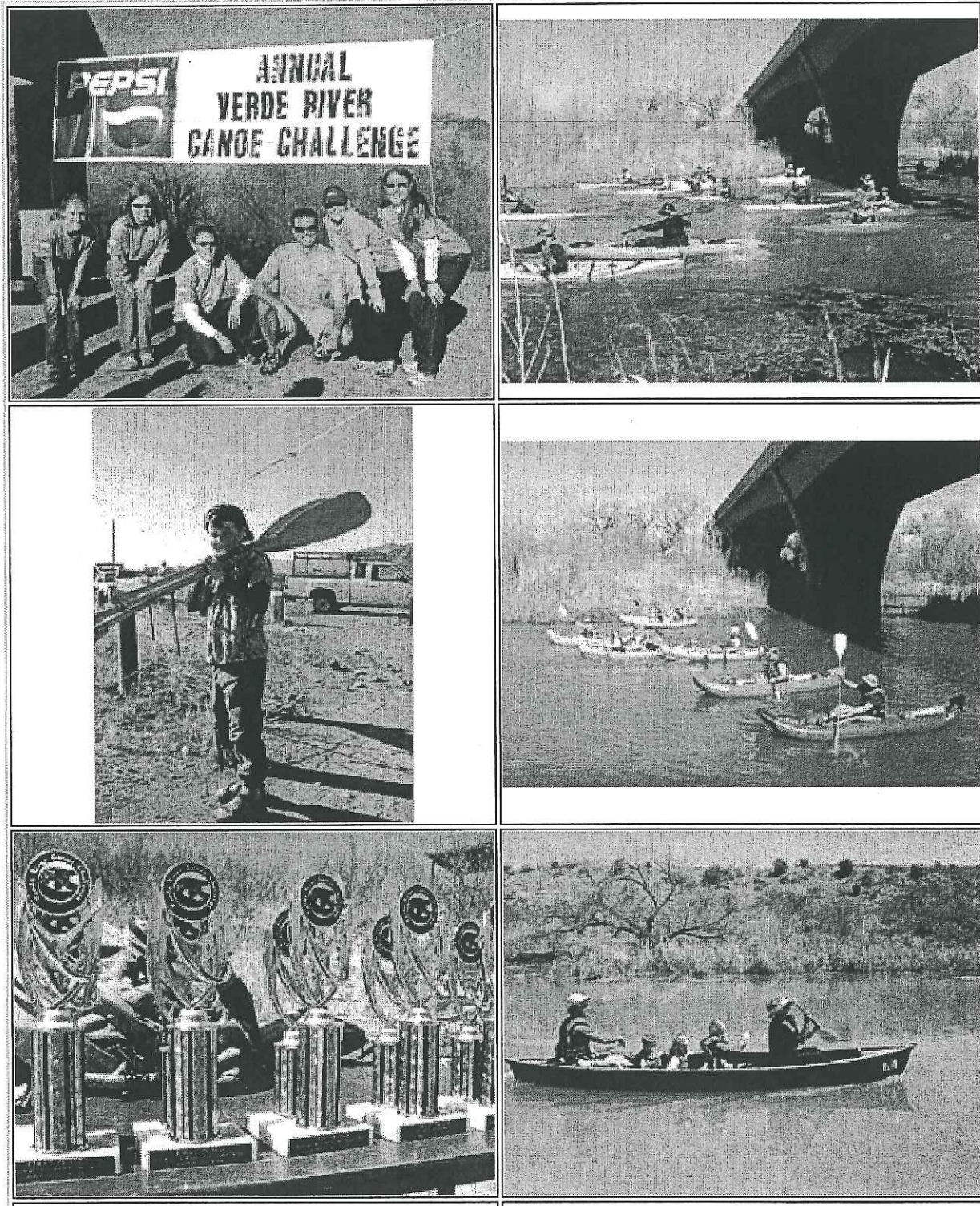


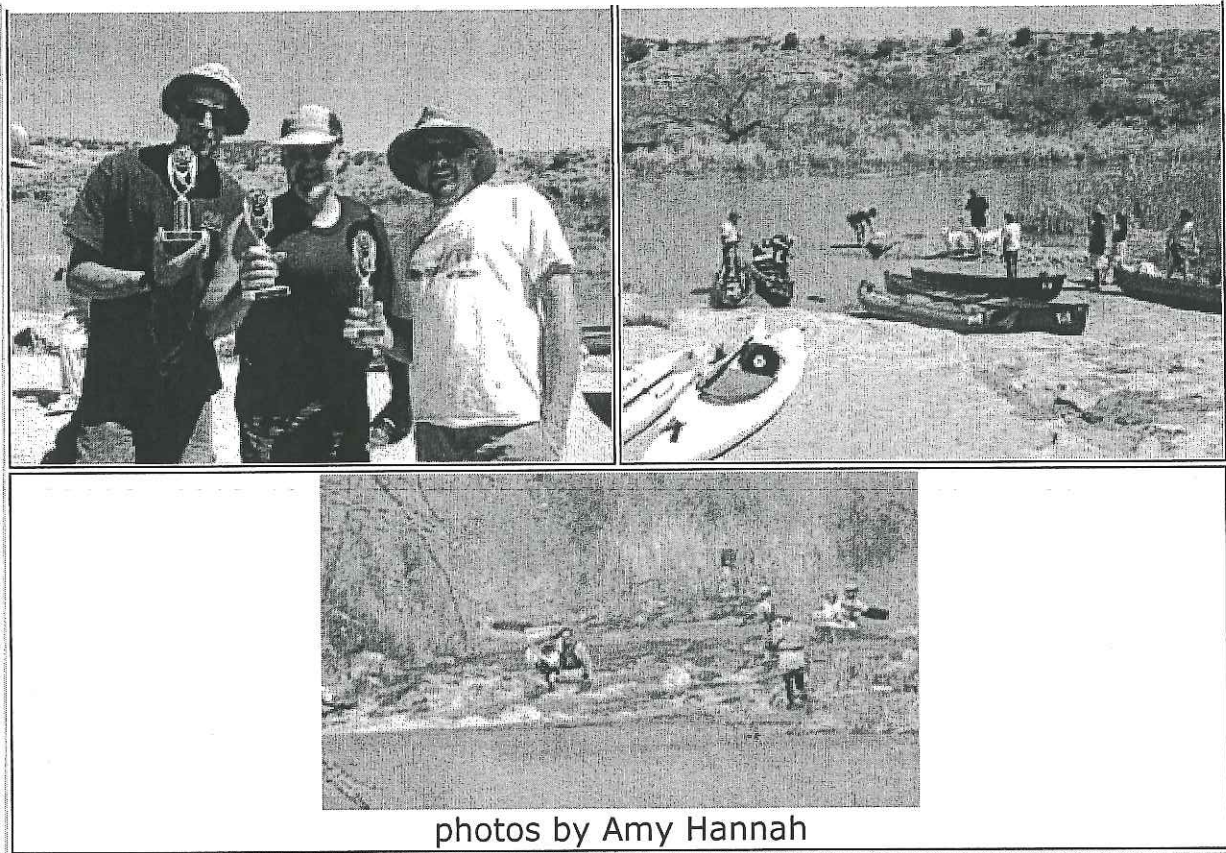
Copyright 2001 Northern Arizona University, ALL RIGHTS RESERVED

PRM325 Special Event Planning Help

Getting Started Syllabus Class Communicate Library

Verde River Canoe Challenge 2002 Photos





[Class] [Verde River Canoe Challenge Information] [Forms & Letters]



Copyright 2001 Northern Arizona University, ALL RIGHTS RESERVED

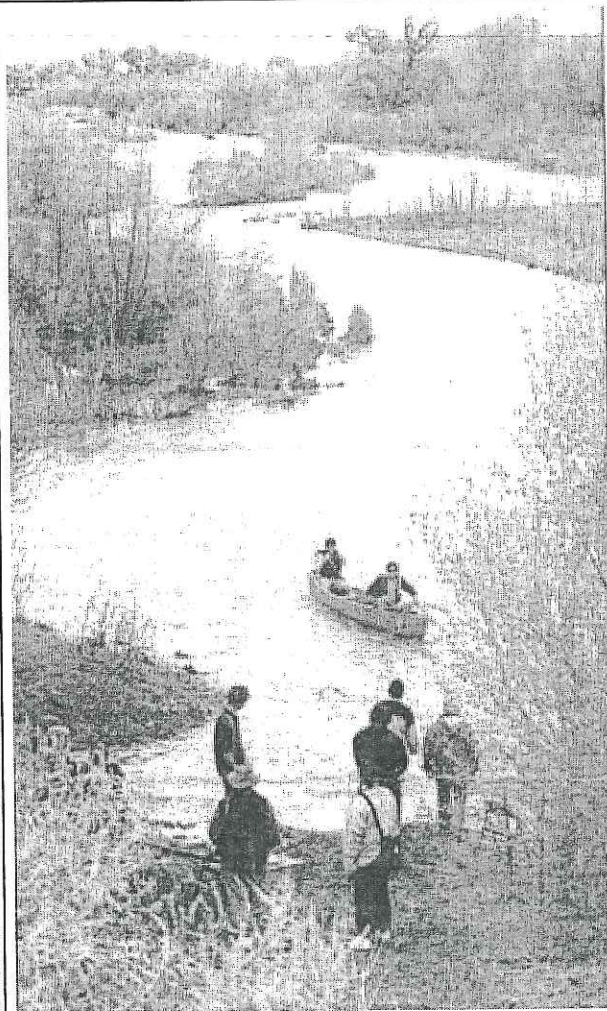
PRM325 Special Event Planning Help

Getting Started | Syllabus | Class | Communicate | Library

Verde River Canoe Challenge 2000 Publicity

Verde River Canoe Challenge

The Journal, Wednesday, April 12, 2000 pp 1C



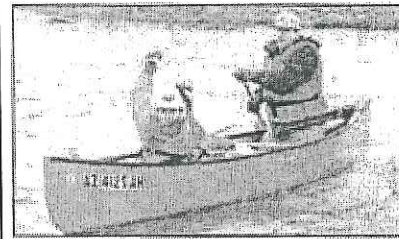
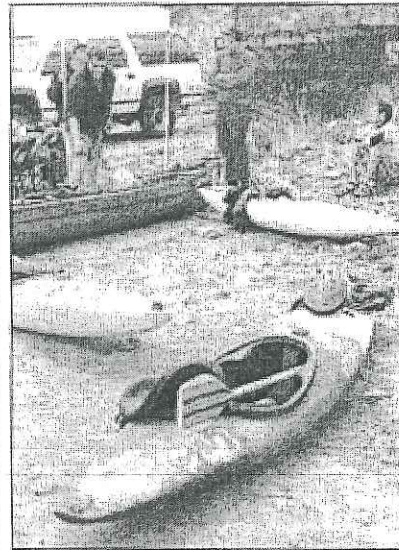
A CANOE slides into the Clear Creek water-and-safety stop during the Verde River Canoe Challenge on April 1 (left). A somewhat apprehensive Mara Laurus, right, counsels her daughter, Antonia, before sending her off on a 10-mile canoe journey with her father (top). Lynn Cady, of Cottonwood, leads the flotilla as racers start downstream from Camp Verde's White Bridge (above). Cady would eventually be the first to reach the finish at Beasley Flat.



THE TANDEM of Lyle Larson, left, and Pete Cline glides on past the Clear Creek water stop on the way to winning the two-man canoe class (above left). The finish area at Beasley Flats was a place for tired contestants to recharge their batteries and rebash the race before heading for home (top right). Trisha DiStefano's pre-race garb is an indicator of weather conditions that day (near right). Although it was cold and rainy, the weather did make the river high enough for the run. Antonia Lampros and her dad, Harry Lampros, came through to the finish safe and sound, one hour, 56 minutes and 35 seconds after launching from the White Bridge (far right). Father and daughter won the family class. The Camp Verde Parks and Recreation Department sponsored the Verde River Canoe Challenge. Students and staff from the Parks and Recreation Management Program of Northern Arizona University conducted the event.



Photography by Keith Anderson



Wet and Wild

Staff photos by Pamela Williams
 Competitors of the Verde River Canoe race made a fast-yet-wet finish at Beasley Flats Saturday. With scattered rains, contestants didn't need to fall from their racing craft to find themselves and their gear damp. Despite the rain, 27 people showed up to compete with 18 boats. The race was sponsored by the Northern Arizona Universities Park and Recreation Special Event Planning Class and Camp Verde Parks and Recreation Department.

The Bugle, Friday, April 7, 2000, p 1B



Canoe race

Are You Ready?
THE 1ST ANNUAL
VERDE RIVER
CANOE CHALLENGE

Sponsored by C.V. Parks and Recreation and
NAU Parks and Recreation Management

When: Saturday, April 1st, 2000,
10:00am

Location: White Bridge to Beasley Flats

Categories: Men, Women, Co-Ed, Family
River Difficulty: Novice



Permit Required
Call 567-0535
For more details

Source: Camp Verde
Adventures,
January-June 2000 p 11

The first Verde River Canoe Challenge will take place at 10 a.m. Saturday, April 1. The 10-mile canoe

race will begin at White Bridge (Verde River and Rte. 206) and end

at Beasley Flats Recreation Area. A

free shuttle service will be provided between White Bridge and Beasley Flats.

The event is being sponsored by the Camp Verde Parks and Recreation Dept. and the Northern Arizona University Parks and Management's Special Event Planning students.

Categories include: male and female solo canoe, male and female tandem canoe, male and female kayak, family tandem canoe and coed tandem.

On-site registration will begin at 7:30 a.m. and cost is \$20 per adult and \$17 per child. Fee includes

Verde River Canoe Challenge T-shirt and American Canoe Association participant insurance.

For more information, contact

Bill Lee at Camp Verde Parks and Recreation Dept. (540) 567-0535 or Chuck

Canoe Challenge set for Saturday

The first Verde River Canoe Challenge will take place at 10 a.m. Saturday, April 1, at

White Bridge and Beasley Flats Recreation Area.

The event is co-sponsored by the Camp Verde Parks and Recreation Department and Northern Arizona University Parks and Recreation management students. Pre-registration is at Camp Verde Parks and Recreation Department. Forms also be available at Verde Chamber of Commerce.

Pre-registration cost \$15 per child and \$20 per adult. The fee includes American Canoe Association insurance

Participants can enter the following categories: male or female solo canoe; male or female kayak; family tandem canoe; and coed tandem

Participants are encouraged to check in at 7:30 a.m.

For information, contact Bill Lee at parks and recreation, 567-0535

Hammersley, NAU Parks and Recreation Dept; (520) 523-6655.

Source: Red Rock N Wednesday, March 2000, p. A12

Source: Daily Sun, Wednesday, March 29, 2000 p A1

Verde River Canoe Challenge to hit the water this weekend

The first Verde River Canoe Challenge will take place April 1 at 10 a.m.

The 10-mile canoe race will begin at White Bridge (Verde River and Arizona 260) and end at Beasley Flat Recreation area. A free shuttle service will be provided between White Bridge and Beasley Flats.

The event is co-sponsored by Camp Verde Parks and Recreation Department and Northern Arizona University Parks and Recreation Management's Special Event Planning students.

On-site registration begins at 7:30 a.m. and the cost is \$17 per child and \$20 per adult. Fee includes a Verde River Canoe Challenge T-shirt and American Canoe Association participant insurance.

Participants can enter the following categories:

- Male and female tandem canoe
- Male and female solo canoe
- Male and female (K-1) kayak
- Family tandem Canoe
- Co-ed tandem

Participants are encouraged to check in by 7:30 a.m. For more information, contact Bill Lee, Camp Verde Parks and Recreation Department at 567-0535 or Chuck



Staff photo by Patricia Williams

Members of the Northern Arizona University Parks and Recreation Department tested the waters Saturday with their kayaks in preparation for the Verde River Canoe Challenge. The 10-mile canoe race will begin at the White Bridge and end at Beasley Flats Recreation Area.

The Bugle, Wednesday, March 29, 2000, p A7

Hammersley, NAU Parks and Recreation
Management Department (520) 523-6655

[Class] [Verde River Canoe Challenge Information] [Forms & Letters]



Copyright 2001 Northern Arizona University, ALL RIGHTS RESERVED