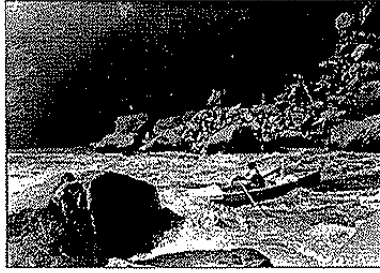


34

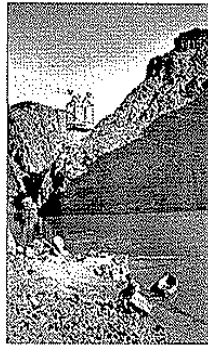
Filename: 13954.jpg



Fileinfo.: 2999 x 2139 Pixels
Size: 25.39 * 18.11 cm
Color: Grayscale
Imagesize: 6.12 MByte
Filesize: 2.00 MByte

Date:
9/24/2008 10:43:37 AM

Objectname: 13954
Caption: STONE EXPEDITION- NATHANIEL GALLOWAY RUNNING
'HELL'S HALF MILE'. PHOTO BY RAYMOND COGSWELL.
SEPTEMBER 23, 1909. PUBLIC DOMAIN.



Fileinfo.: 2147 x 3598 Pixels
Size: 18.18 * 30.46 cm
Color: Grayscale
Imagesize: 7.37 MByte
Filesize: 3.99 MByte

Date:
5/15/2003 9:57:02 AM

Objectname: 15743
Caption: RUST CABLE & TRAMWAY CAR OVER COLORADO
RIVER. MAN SITTING ON SHORE WITH SMALL CANVAS BOAT
(BENEATH CABLE.) CIRCA 1911. RUST COLLECTION.

Filename: 15754.jpg



Fileinfo.: 1936 x 3105 Pixels
Size: 16.39 * 26.29 cm
Color: Grayscale
Imagesize: 5.73 MByte
Filesize: 1.88 MByte

Date:
11/29/2004 7:28:53 PM

Objectname: 15754
Caption: ELLSWORTH KOLB POSING WITH 8X10 CAMERA ON
TRIPOD -- ATOP OUTCROP BY RIVER. BOAT. CIRCA 1910. KOLB
BROS - RUST COLLECTION.

Filename: 15774.jpg



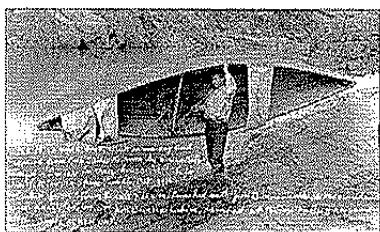
Fileinfo.: 3598 x 2123 Pixels
Size: 30.46 * 17.97 cm
Color: Grayscale
Imagesize: 7.28 MByte
Filesize: 3.43 MByte

Date:
5/15/2003 9:43:27 AM

Objectname: 15774

Caption: 2 MEN WITH A STRING OF HUMPBACK CHUB FISH & COLLAPSIBLE BOAT. COLORADO RIVER NEAR PHANTOM RANCH. CIRCA 1911. RUST COLLECTION.

Filename: 16251.jpg



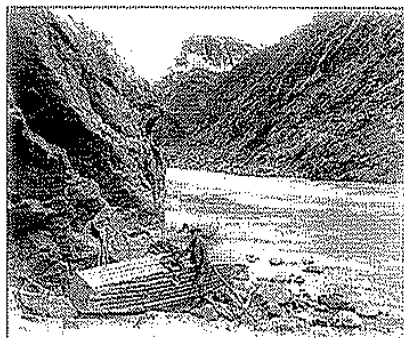
Fileinfo.: 3591 x 2145 Pixels
Size: 30.40 * 18.16 cm
Color: Grayscale
Imagesize: 7.35 MByte
Filesize: 1.92 MByte

Date:
11/10/2003 4:29:02 PM

Objectname: 16251

Caption: EMERY KOLB HOLDS 125 LB. CANVAS BOAT HAND-CARRIED TO THE RIVER FOR THE SHIVA TEMPLE TRIP. OCT 1916. KOLB BROS. GRCA 30476.

Filename: 17170.jpg



Fileinfo.: 3592 x 2984 Pixels
Size: 30.41 * 25.26 cm
Color: Grayscale
Imagesize: 10.22 MByte
Filesize: 3.30 MByte

Date:
12/17/2003 11:55:09 AM

Objectname: 17170

Caption: EMERY, ELLSWORTH KOLB, "WRECK BELOW BASS TRAIL" EMERY STICKING OUT HOLE IN BOAT. COLORADO RIVER. 25 DEC 1911. KOLB BROS.

Catalog # GRCA 32093

Object CANOE

Description COLLAPSIBLE METAL ROD FRAME CANOE COVERED WITH DARK BROWN COATED CANVAS, SECURED TO TOP EDGES OF FRAME BY METAL RIVETS AND STAPLES. THERE ARE ROPE RINGS AT THE BOW AND STERN. THE CANVAS IS LIGHTLY WORN. A LIGHT BROWN WOODEN FLOORBOARD LIES ON THE BOTTOM INTERIOR OF THE BOAT.

THE CANOE WAS FOUND IN EMERY KOLB'S GARAGE, (WITH A SKELETON INSIDE?) AFTER HIS DEATH. KOLB PHOTOS SHOW THE KOLB BROTHERS USING A CANVAS CANOE TO CROSS THE COLORADO RIVER, IN THEIR EXPLORATIONS OF THE CANYON. DAVID RUST IS ALSO KNOWN TO HAVE USED A CANVAS CANOE FOR CROSSING THE COLORADO WHEN HE HAD HIS RUST CAMP DOWN WHERE PHANTOM RANCH LIES TODAY. THE HISTORY OF THIS PARTICULAR CANOE IS NOT KNOWN, BUT EMERY KOLB IS BELIEVED TO HAVE ACQUIRED A CANVAS CANOE FROM DAVID RUST AT SOME POINT. THIS BOAT IS IN VERY GOOD SHAPE AND DOESN'T LOOK LIKE IT COULD HAVE BEEN USED MUCH.

MEASUREMENTS: L 11.8, W 4.1, T 1.5 FEET

Catalog # GRCA 83613

Object CANOE

Description COLLAPSIBLE METAL ROD FRAME CANOE COVERED WITH DARK BROWN COATED CANVAS, SECURED TO TOP EDGES OF FRAME BY METAL RIVETS AND STAPLES. SOME OF THE METAL RODS HAVE COME LOOSE FROM THE FRAME, AND ARE HANGING UNATTACHED. THERE ARE ROPE RINGS AT THE BOW AND STERN. THE CANVAS IS SLIGHTLY WORN. THE BOAT IS LABELLED, ON THE INSIDE, FRONT AND BACK, AS BEING MADE BY THE KALAMAZOO CANVAS BOAT COMPANY.

THE BOAT IS A POSSIBLE DAVID RUST CANOE. RUST WAS KNOWN TO HAVE USED CANVAS CANOES IN THE GLEN CANYON AREA. THE 'UTAH HISTORICAL QUARTERLY', VOL. 28, 1960, PAGES 303 & 307 MAKES REFERENCE TO RUST CANVAS 'FOLD BOATS'. THE BOAT, ALONG WITH ANOTHER SIMILAR CANVAS CANOE, #GRCA-83614 AND TWO WOODEN FOLDING SETS OF FLOORBOARDS, #GRCA-83617 & 83618, WERE ACQUIRED FROM THE RUST FAMILY, BY GLEN CANYON NRA, WITH THE ASSISTANCE OF KEN SLEIGHT, RIVER RUNNER AND HISTORIAN. IN JULY 2008, BOTH CANOES AND BOTH SETS OF FLOORBOARDS WERE TRANSFERRED TO GRCA, FOR INCLUSION IN THE HISTORIC BOAT CONSERVATION PROJECT.

MEASUREMENTS: L 16.0, W 3.5, T 1.5 FEET

Catalog # GRCA 83614

Object CANOE

Description COLLAPSIBLE METAL ROD FRAME CANOE COVERED WITH DARK BROWN COATED CANVAS, SECURED TO TOP EDGES OF FRAME BY METAL RIVETS AND STAPLES. SOME OF THE METAL RODS HAVE COME LOOSE FROM THE FRAME, AND ARE HANGING UNATTACHED. THERE ARE ROPE RINGS AT THE BOW AND STERN. THE CANVAS IS SLIGHTLY WORN. THE BOAT IS LABELLED, ON THE INSIDE, FRONT AND BACK, AS BEING MADE BY THE KALAMAZOO CANVAS BOAT COMPANY.

THE BOAT IS A POSSIBLE DAVID RUST CANOE. RUST WAS KNOWN TO HAVE USED CANVAS CANOES IN THE GLEN CANYON AREA. THE 'UTAH HISTORICAL QUARTERLY', VOL. 28, 1960, PAGES 303 & 307 MAKES REFERENCE TO RUST CANVAS 'FOLD BOATS'. THE BOAT, ALONG WITH ANOTHER SIMILAR CANVAS CANOE, #GRCA-83613 AND TWO WOODEN FOLDING SETS OF FLOORBOARDS, #GRCA-83617 & 83618, WERE ACQUIRED FROM THE RUST FAMILY, BY GLEN CANYON NRA, WITH THE ASSISTANCE OF KEN SLEIGHT, RIVER RUNNER AND HISTORIAN. IN JULY 2008, BOTH CANOES AND BOTH SETS OF FLOORBOARDS WERE TRANSFERRED TO GRCA, FOR INCLUSION IN THE HISTORIC BOAT CONSERVATION PROJECT.

MEASUREMENTS: L 16.0, W 3.5, T 1.5 FEET

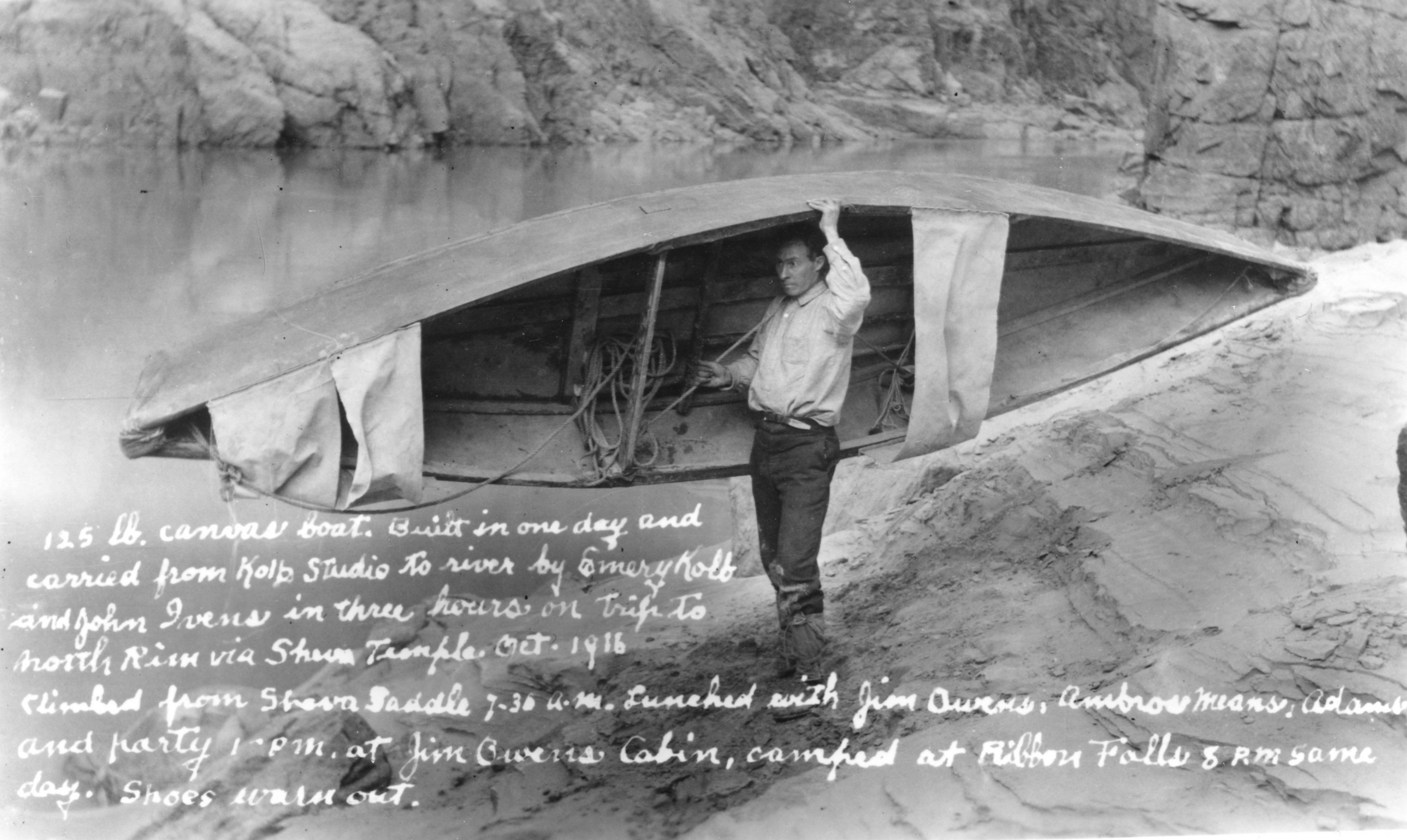


13-12 10









125 lb. canvas boat. Built in one day and carried from Kolb Studio to river by Emery Kolb and John Owens in three hours on trip to North Rim via Shiva Temple. Oct. 1916

Climbed from Shiva Saddle 7-30 a.m. Lunched with Jim Owens, Ambrose Means, Adams and party 1 P.M. at Jim Owens Cabin, camped at Ribbon Falls 8 P.M. same day. Shoes worn out.

