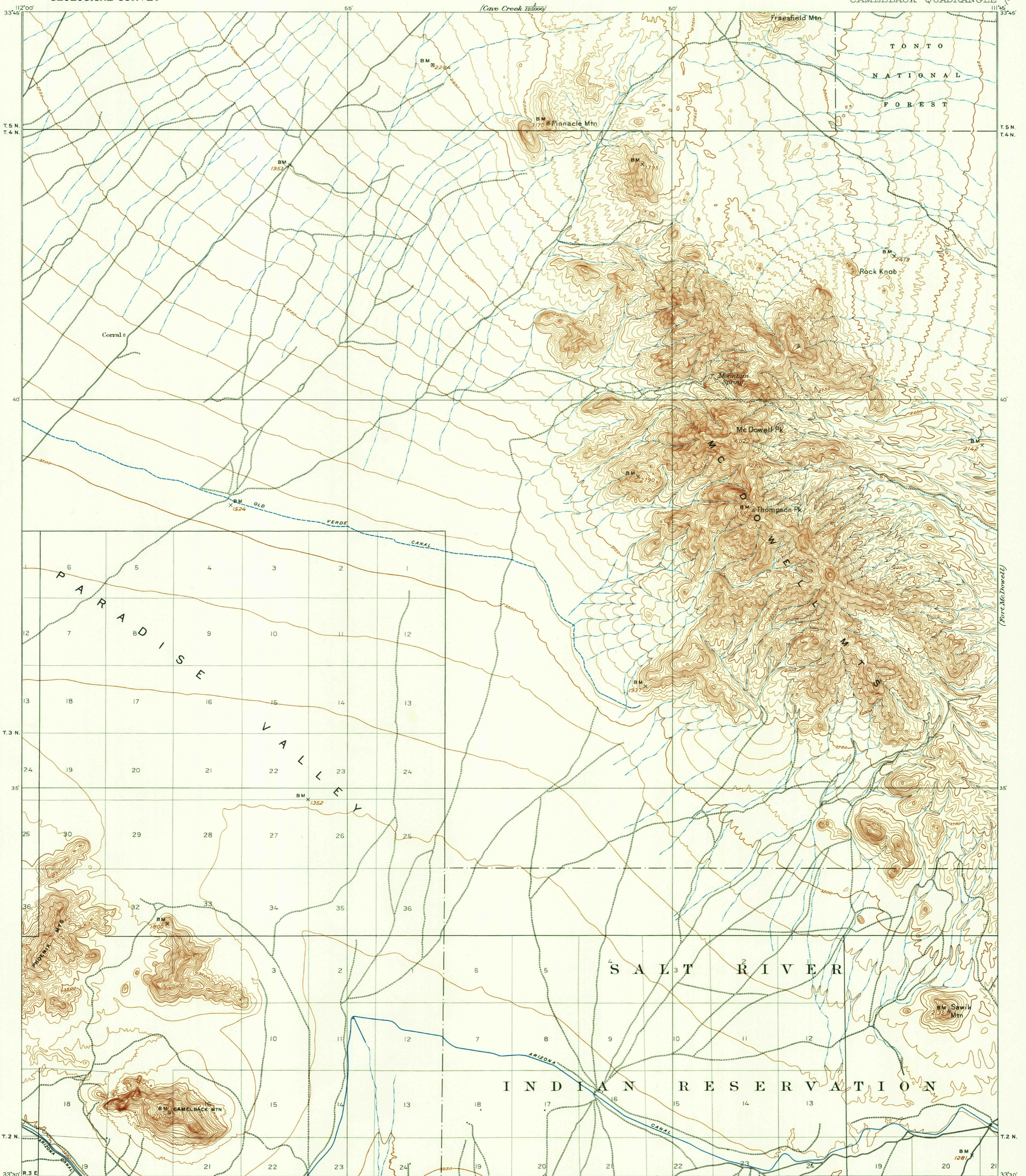
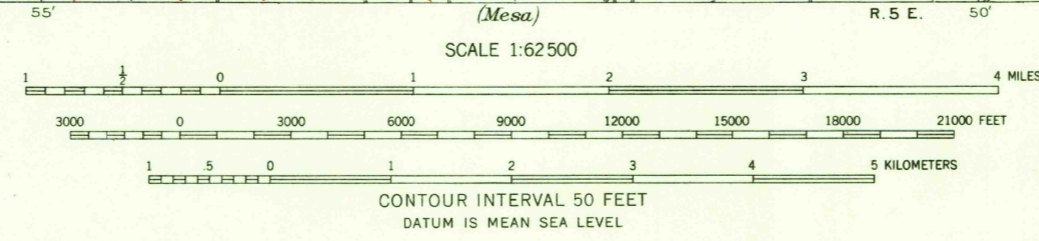


246



E. M. Douglas, Geographer
T. M. Bannon, in charge of section,
Topography by T. M. Bannon, C. H. Birdseye, S. S. Stahl,
and Reclamation Service.
Triangulation by A. H. Thompson and T. M. Bannon.
Surveyed in 1903-1904.

APPROXIMATE MEAN
DECLINATION 1904



INTERIOR—GEOLOGICAL SURVEY, WASHINGTON, D. C.—1904
Polyconic projection. To place on 1927 North American datum
move projection lines 460 feet south and 350 feet west

USGS
Historical File
Topographic Division

U.S.G.S.
FILE COPY
TOPOGRAPHIC DIVISION

CAMELBACK, ARIZ.
N 3330—W 11145/15
1904

FOR SALE BY U. S. GEOLOGICAL SURVEY, DENVER 25, COLORADO OR WASHINGTON 25, D. C.
A FOLDER DESCRIBING TOPOGRAPHIC MAPS AND SYMBOLS IS AVAILABLE ON REQUEST

JUN - 3 1961

2560

Advance sheet
Subject to correction

ARIZONA
(GILA COUNTY)
CHRYSOTILE QUADRANGLE

DEPARTMENT OF THE INTERIOR
U. S. GEOLOGICAL SURVEY
OSQUAW Pk.

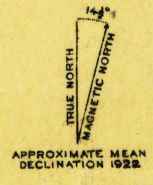
230-N-I AND III



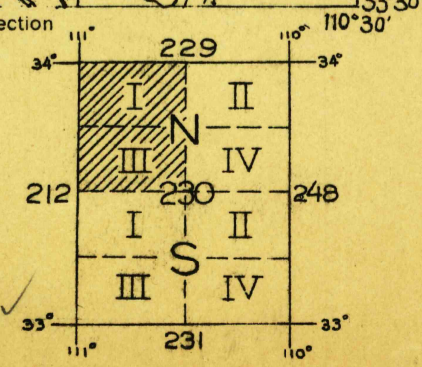
Topography: rapid reconnaissance by N.H. Darton, 1921-1922
most of Sierra Ancha from map by Forest Service
Elevations mostly by Aneroid and Vertical angles

DIAGRAM OF TOWNSHIP

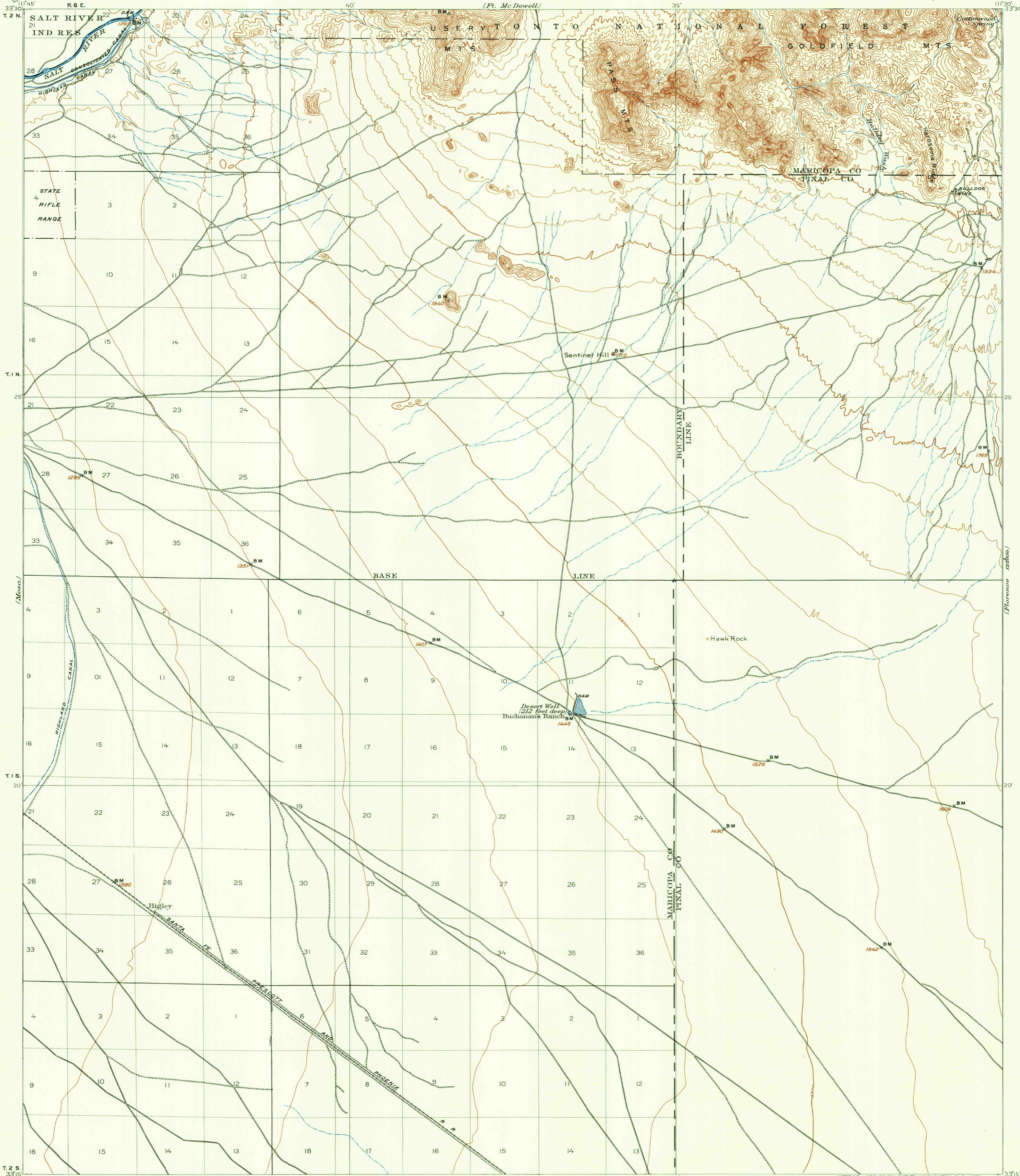
6	5	4	3	2	1
7	8	9	10	11	12
13	14	15	16	17	18
19	20	21	22	23	24
25	26	27	28	29	30
31	32	33	34	35	36



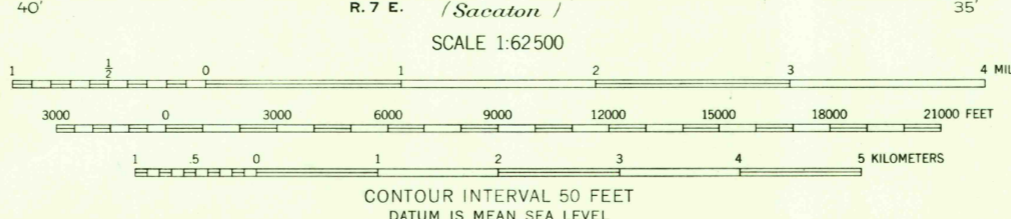
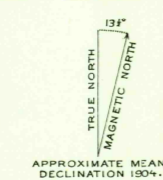
USGS
Historical File
Topographic Division



CHRYSOTILE, ARIZ.



(Cameel Creek)
E. M. Douglas, Geographer.
T. M. Bannon, in charge of section.
Topography by C. H. Birdseye, S. S. Stahl, and D. F. Moor.
Triangulation by T. M. Bannon.
Surveyed in 1904.



USGS
Historical File
Topographic Division

INTERIOR—GEOLOGICAL SURVEY, WASHINGTON, D. C.—1958
Polyconic projection. To place on 1927 North American datum
move projection lines 350 feet west and 460 feet south

U.S.G.S.
FILE COPY
TOPOGRAPHIC DIVISION

DESERT WELL, ARIZ.
N 3315—W 11130/15
1904

FOR SALE BY U. S. GEOLOGICAL SURVEY, DENVER 2, COLORADO OR WASHINGTON 25, D. C.
A FOLDER DESCRIBING TOPOGRAPHIC MAPS AND SYMBOLS IS AVAILABLE ON REQUEST

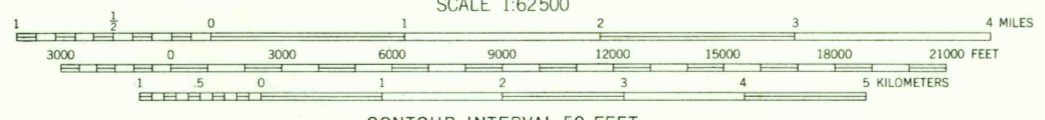
APR 17 1958

1950



(Cave Creek 125000)
E. M. Douglas, Geographer.
T. M. Bannon, in charge of section.
Topography by T. M. Bannon, C. H. Birdseye, and S. S. Stahl.
Triangulation by T. M. Bannon.
Surveyed in 1904.

(Cameleback)
T.M. NORTH
MAGNETIC NORTH
APPROXIMATE MEAN
DECLINATION 1904



CONTOUR INTERVAL 50 FEET
DATUM IS MEAN SEA LEVEL

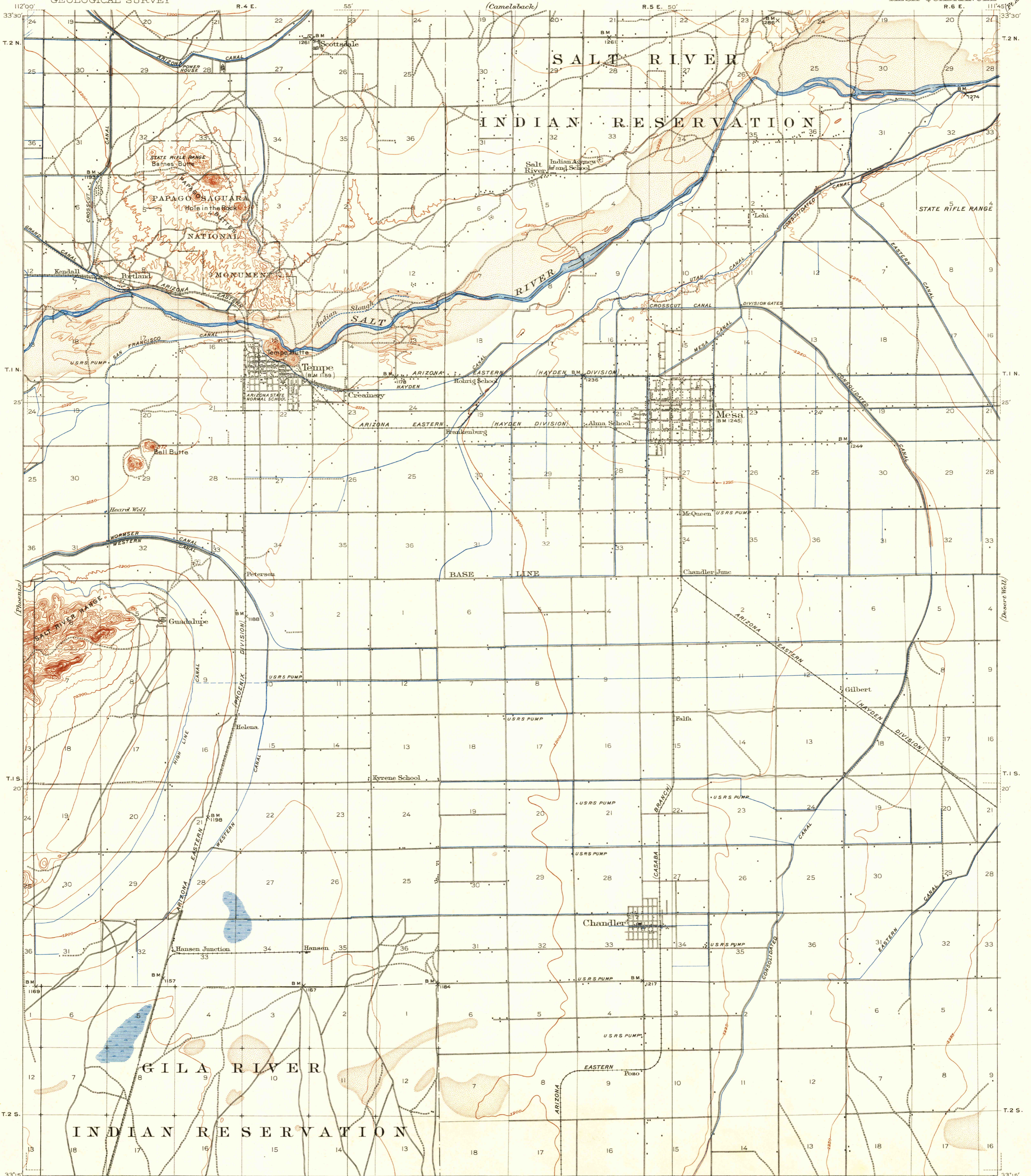
(Roosevelt 225000)
INTERIOR—GEOLOGICAL SURVEY, WASHINGTON, D. C.—1960
Polyconic projection. To place on 1927 North American datum
move projection lines 460 feet south and 350 feet west

FT. MC DOWELL, ARIZ.
N 3330—W 11130/15

1904

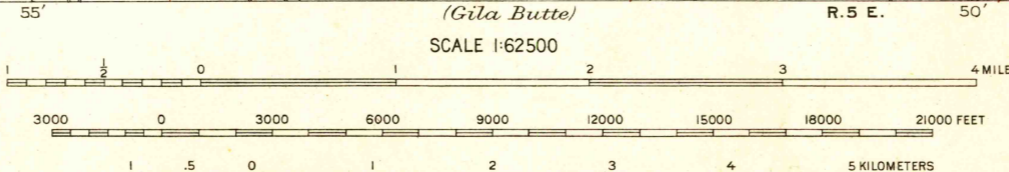
FOR SALE BY U. S. GEOLOGICAL SURVEY, DENVER 25, COLORADO OR WASHINGTON 25, D. C.
A FOLDER DESCRIBING TOPOGRAPHIC MAPS AND SYMBOLS IS AVAILABLE ON REQUEST

USGS Library
Reston, VA.
Topo Archive



R. 4 E. 55' 50' (Camelsback)
112°00' 33'30" T. 2 N. 24 19 20 21 22 23 24 25 26 27 28 29 30 31 32 33 34 35 36 37 38 39 40 41 42 43 44 45 46 47 48 49 50 51 52 53 54 55 56 57 58 59 60 61 62 63 64 65 66 67 68 69 70 71 72 73 74 75 76 77 78 79 80 81 82 83 84 85 86 87 88 89 90 91 92 93 94 95 96 97 98 99 100
T. 1 N. 25 24 19 20 21 22 23 24 25 26 27 28 29 30 31 32 33 34 35 36 37 38 39 40 41 42 43 44 45 46 47 48 49 50 51 52 53 54 55 56 57 58 59 60 61 62 63 64 65 66 67 68 69 70 71 72 73 74 75 76 77 78 79 80 81 82 83 84 85 86 87 88 89 90 91 92 93 94 95 96 97 98 99 100
T. 1 S. 20 24 19 20 21 22 23 24 25 26 27 28 29 30 31 32 33 34 35 36 37 38 39 40 41 42 43 44 45 46 47 48 49 50 51 52 53 54 55 56 57 58 59 60 61 62 63 64 65 66 67 68 69 70 71 72 73 74 75 76 77 78 79 80 81 82 83 84 85 86 87 88 89 90 91 92 93 94 95 96 97 98 99 100
T. 2 S. 12 7 8 9 10 11 12 13 14 15 16 17 18 19 20 21 22 23 24 25 26 27 28 29 30 31 32 33 34 35 36 37 38 39 40 41 42 43 44 45 46 47 48 49 50 51 52 53 54 55 56 57 58 59 60 61 62 63 64 65 66 67 68 69 70 71 72 73 74 75 76 77 78 79 80 81 82 83 84 85 86 87 88 89 90 91 92 93 94 95 96 97 98 99 100
112°00' 33'15" R. 4 E. 55' 50' (Gila Butte)
111°45' 33'15" T. 2 S. 13 18 17 16 15 14 13 12 11 10 9 8 7 6 5 4 3 2 1 0 1 2 3 4 5 6 7 8 9 10 11 12 13 14 15 16 17 18 19 20 21 22 23 24 25 26 27 28 29 30 31 32 33 34 35 36 37 38 39 40 41 42 43 44 45 46 47 48 49 50 51 52 53 54 55 56 57 58 59 60 61 62 63 64 65 66 67 68 69 70 71 72 73 74 75 76 77 78 79 80 81 82 83 84 85 86 87 88 89 90 91 92 93 94 95 96 97 98 99 100

APPROXIMATE MEAN
DECLINATION, 1913.



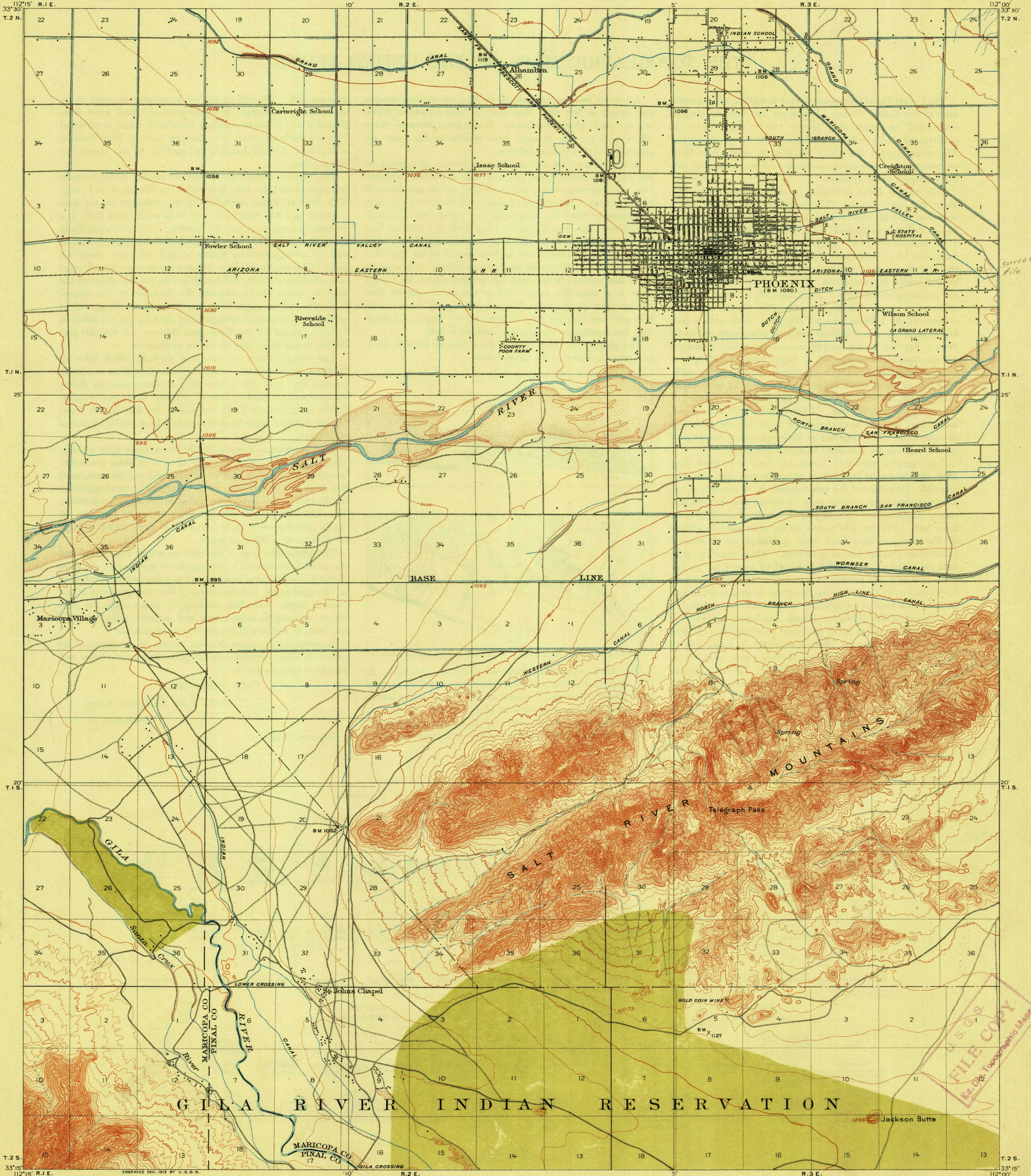
USGS
Historical File
Topographic Division

U.S.G.S.
FILE COPY
TOPOGRAPHIC DIVISION

INTERIOR - GEOLOGICAL SURVEY, WASHINGTON, D.C. 1956
Polyconic projection. 1927 North American datum
Note: In joining with Phoenix, Camelsback, Ft. McDowell, Desert Well, and Sacaton sheets use black dotted projection corners. Mesa sheet is projected from later data.

MESA, ARIZ.
N3315-W1145/15

1913 NOV 1 6 1955

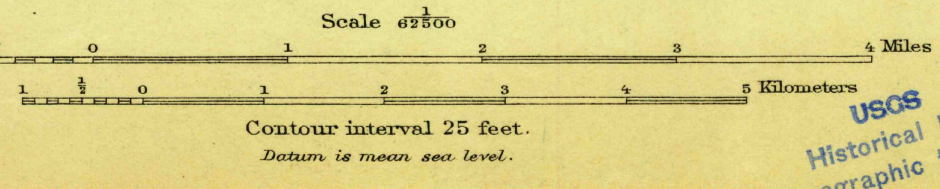


correction in file.

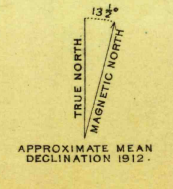
U.S.G.S.
FILE COPY
Engr. Div. Topographic Maps.

ENGRAVED DEC. 1913 BY U.S.G.S.
R. B. Marshall, Chief Geographer.
T. G. Gardine, Geographer in charge.
Topography by T. P. Pendleton and Reclamation Service.
Control by A. H. Thompson, J. T. Stewart, and Reclamation Service.
Surveyed in 1903-1904 and 1912.

U.S.G.S.
FILE COPY
Ed. Div. Topographic Maps.



USGS
Historical File
Topographic Division



June, 1914.
Edition of June, 1914.
JUNE 30 1914 3500

PHOENIX



U.S.G.S.
FILE COPY
TOPOGRAPHIC DIVISION

E. M. Douglas, Geographer.
T. M. Bannon, in charge of section.
Topography by T. M. Bannon, A. P. Meade, Jr., Gilbert Young,
S. N. Stoner, J. I. Gayetty, and R. M. LaFollette.
Control by T. M. Bannon.
Surveyed in 1905-1907.

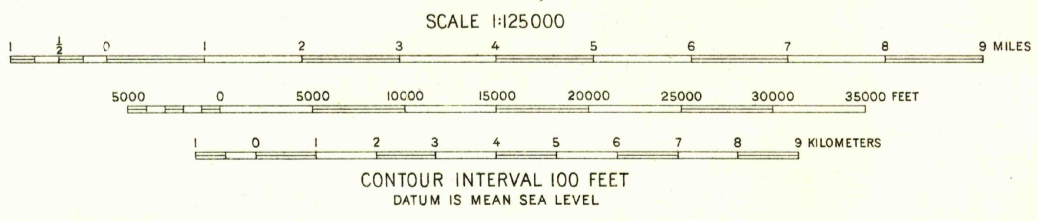
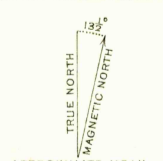


DIAGRAM OF TOWNSHIP

6	5	4	3	2	1
7	8	9	10	11	12
13	14	15	16	17	18
19	20	21	22	23	24
25	26	27	28	29	30
31	32	33	34	35	36

INTERIOR - GEOLOGICAL SURVEY WASHINGTON, D. C. 1856
POLYCONIC PROJECTION. TO PLACE ON 1927 NORTH AMERICAN DATUM
MOVE PROJECTION LINES 465 FEET SOUTH AND 350 FEET WEST

U.S.G.S.
FILE COPY
TOPOGRAPHIC DIVISION

ROOSEVELT, ARIZ.
N3330-W11100/30

1907

FOR SALE BY U.S. GEOLOGICAL SURVEY, FEDERAL CENTER, DENVER, COLORADO OR WASHINGTON 25, D.C.
A FOLDER DESCRIBING TOPOGRAPHIC MAPS AND SYMBOLS IS AVAILABLE ON REQUEST

SEP 26 1956

4265