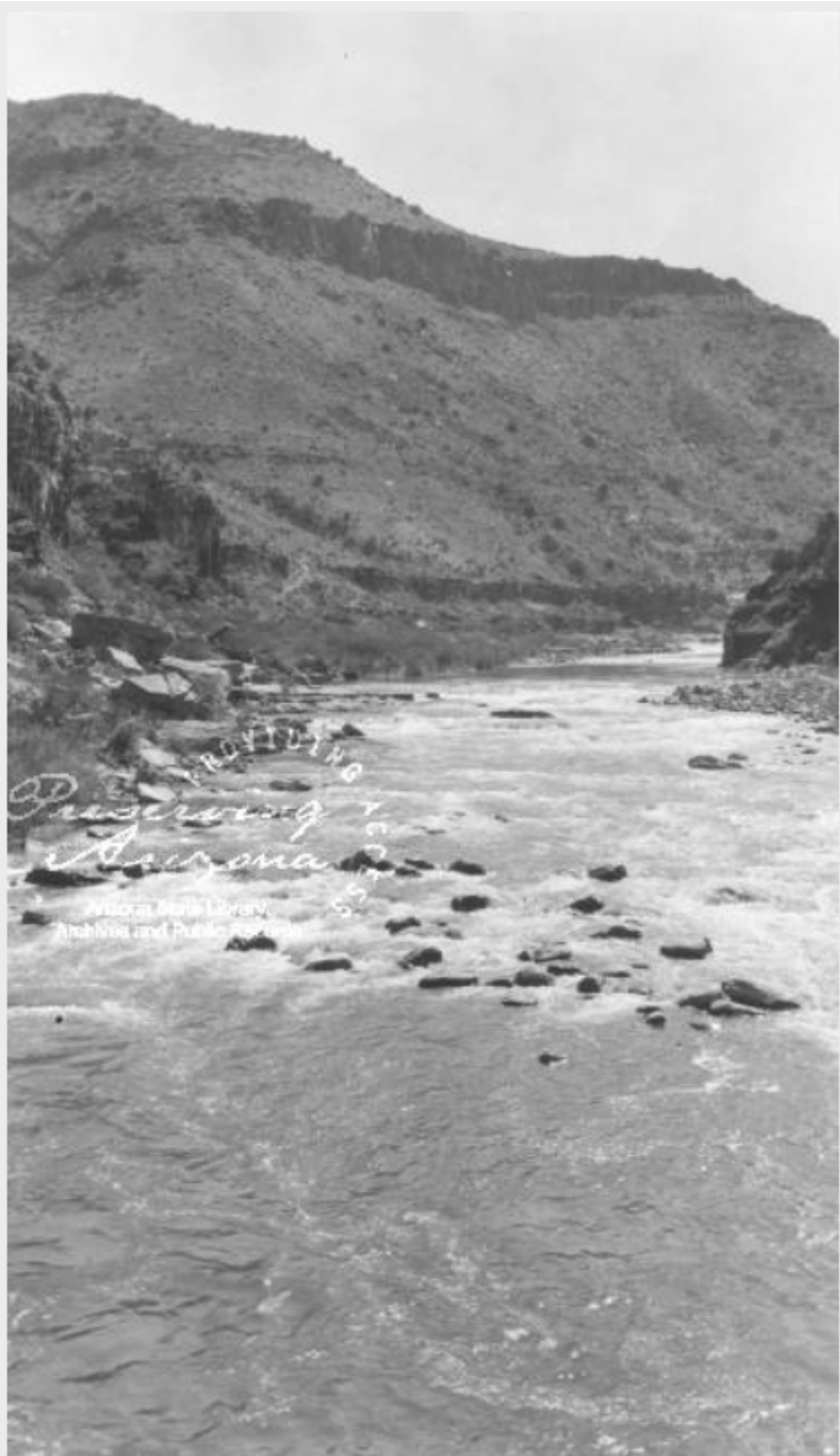


52

Photograph of the Salt River near a construction site on Arizona Highway 60 in Gila County (Ariz.)



Preserving
Arizona
Arizona State Library,
Archives and Public Records

TITLE [Photograph of the Salt River near a construction site on Arizona Highway 60 in Gila County \(Ariz.\)](#)

CREATOR [Unknown](#)

SUBJECT [Salt River \(Ariz.\)](#)

DESCRIPTION [Photograph of the Salt River near a construction site on Arizona Highway 60 in Gila County \(Ariz.\)](#) Site is identified as the Lee Moor Construction Camp.

Publisher [Arizona State Library, Archives and Public Records. History and Archives Division.](#)

TYPE [Image](#)

Material Collection [MG 25 George W.P. Hunt](#)

Geographic Coverage [Gila County \(Ariz.\)](#)

Acquisition Note Did you find an error in our metadata? Can you help identify people, places, things or events in this photograph? Please send an email to photocorrections@azlibrary.gov.

RIGHTS MANAGEMENT From the collection of the History and Archives Division, Arizona State Library, Archives and Public Records. Copyright and/or publication rights for all photographs in this collection are retained by this institution.

DATE ORIGINAL [1932 ca.](#)

Time Period [1930s \(1930-1939\)](#)

DIGITAL IDENTIFIER [01-8948.jpg](#)

Date Digital [2002](#)

DIGITAL FORMAT [JPEG \(Joint Photographic Experts Group\)](#)
[TIFF \(Tagged Image File Format\)](#)

REPOSITORY [Arizona State Library, Archives and Public Records. History and Archives Division.](#)

Order photographs <http://www.azlibrary.gov/arm/research-archives/photograph-collections>