

58



No 3

Credit:
Archives and Manuscripts
University Libraries
Arizona State University (Tempe)

Not to be reproduced, published, exhibited,
or placed in another repository, archive, or
library without the permission of:
Archives and Manuscripts, University Libraries
Arizona State University, Tempe, AZ 85287-1006
602/965-3145

4/5 Tempe Bulletin

HU 235

1920



No. 4

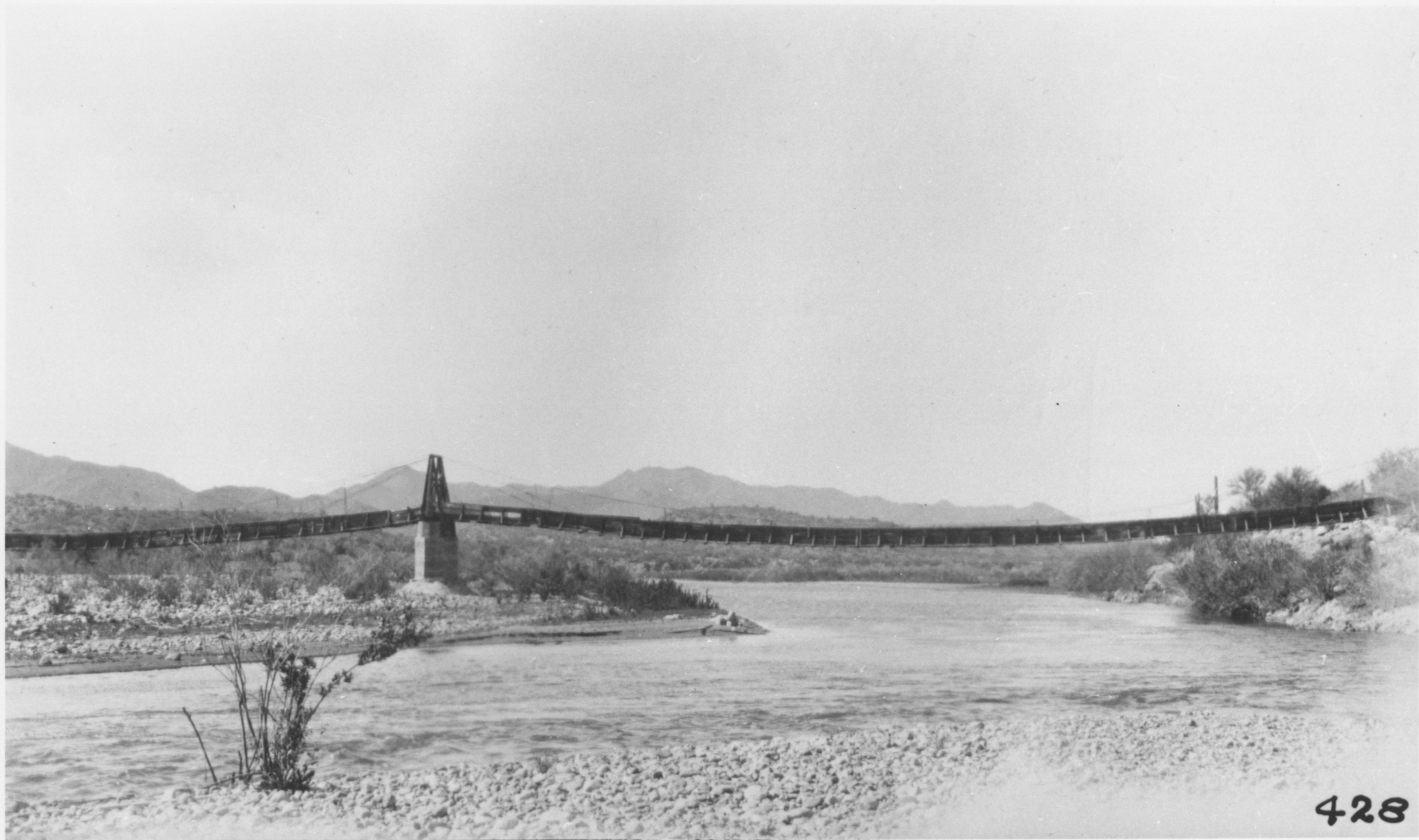
Credit:
Archives and Manuscripts
University Libraries
Arizona State University (Tempe)

Dike to divert
a to N. Abutment

Not to be reproduced, published, exhibited,
or placed in another repository, archive, or
library without the permission of:
Archives and Manuscripts, University Libraries
Arizona State University, Tempe, AZ 85287-1006
602/965-3145

HU 236

1920



428

No. 9

V/S Reach?

Not to be reproduced, published, exhibited,
or placed in another repository, archive, or
library without the permission of:
Archives and Manuscripts, University Libraries
Arizona State University, Tempe, AZ 85287-1006
602/965-3145

Credit:
Herb & Dorothy McLaughlin Collection
Archives and Manuscripts, University Libraries
Arizona State University (Tempe)

MCL 34967

1910



No. 12

Not to be reproduced, published, exhibited,
or placed in another repository, archive, or
library without the permission of:
Archives and Manuscripts, University Libraries
Arizona State University, Tempe, AZ 85287-1006
602/965-3145

Credit:
Herb & Dorothy McLaughlin Collection
Archives and Manuscripts, University Libraries
Arizona State University (Tempe)

MEL 103003

ca 1915



No 16

Not in
SK Reach

Upper Salt R.
Location
unknown
1910

Not to be reproduced, published, exhibited,
or placed in another repository, archive, or
library without the permission of:
Archives and Manuscripts, University Libraries
Arizona State University, Tempe, AZ 85287-1086
602/965-3145

Credit:
Archives and Manuscripts
University Libraries
Arizona State University (Tempe)

SPC 81:3

Tempe State Bridge, Tempe, Arizona.



NO 18

Ash Ave.
1915-1925?

Not to be reproduced, published, exhibited,
or placed in another repository, archive, or
library without the permission of:
Archives and Manuscripts, University Libraries
Arizona State University, Tempe, AZ 85287-1000
602/965-3145

Credit:
Archives and Manuscripts
University Libraries
Arizona State University (Tempe)

SPC 187:7.83

COST
\$140,000⁰⁰
BRIDGE ACROSS
SALT RIVER - APRIL
PHOENIX



No. 21

Not to be reproduced, published, exhibited,
or placed in another repository, archive, or
library without the permission of:
Archives and Manuscripts, University Libraries
Arizona State University, Tempe, AZ 85287-1006
602/965-3145

Credit:
Archives and Manuscripts
University Libraries
Arizona State University (Tempe)

Ash Avenue

1913

SPC205:2

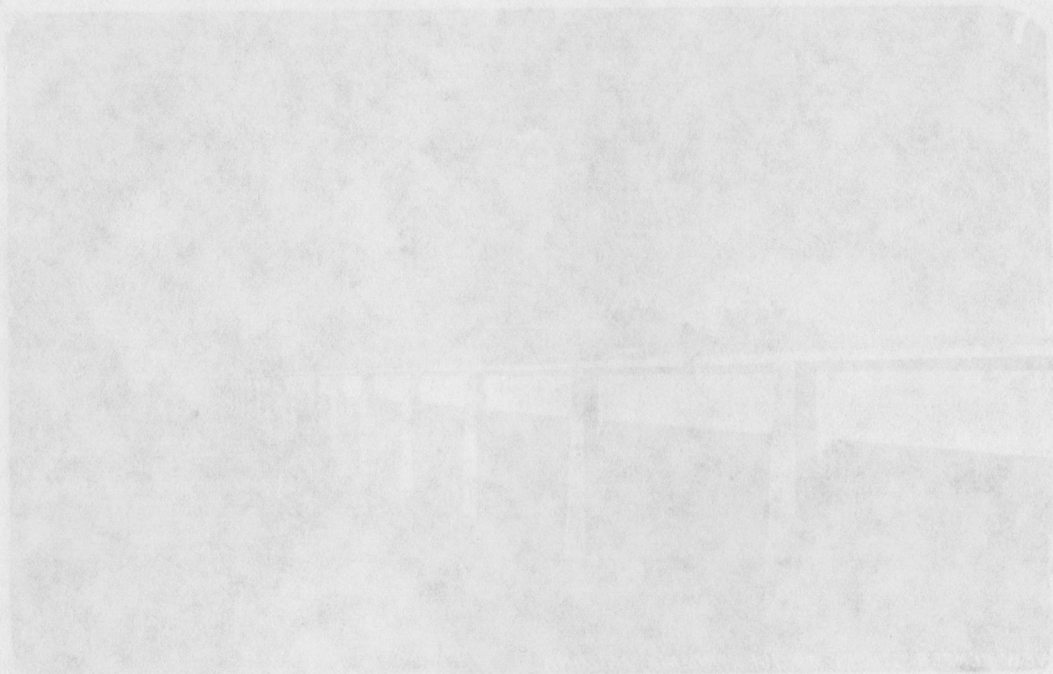
No. 24



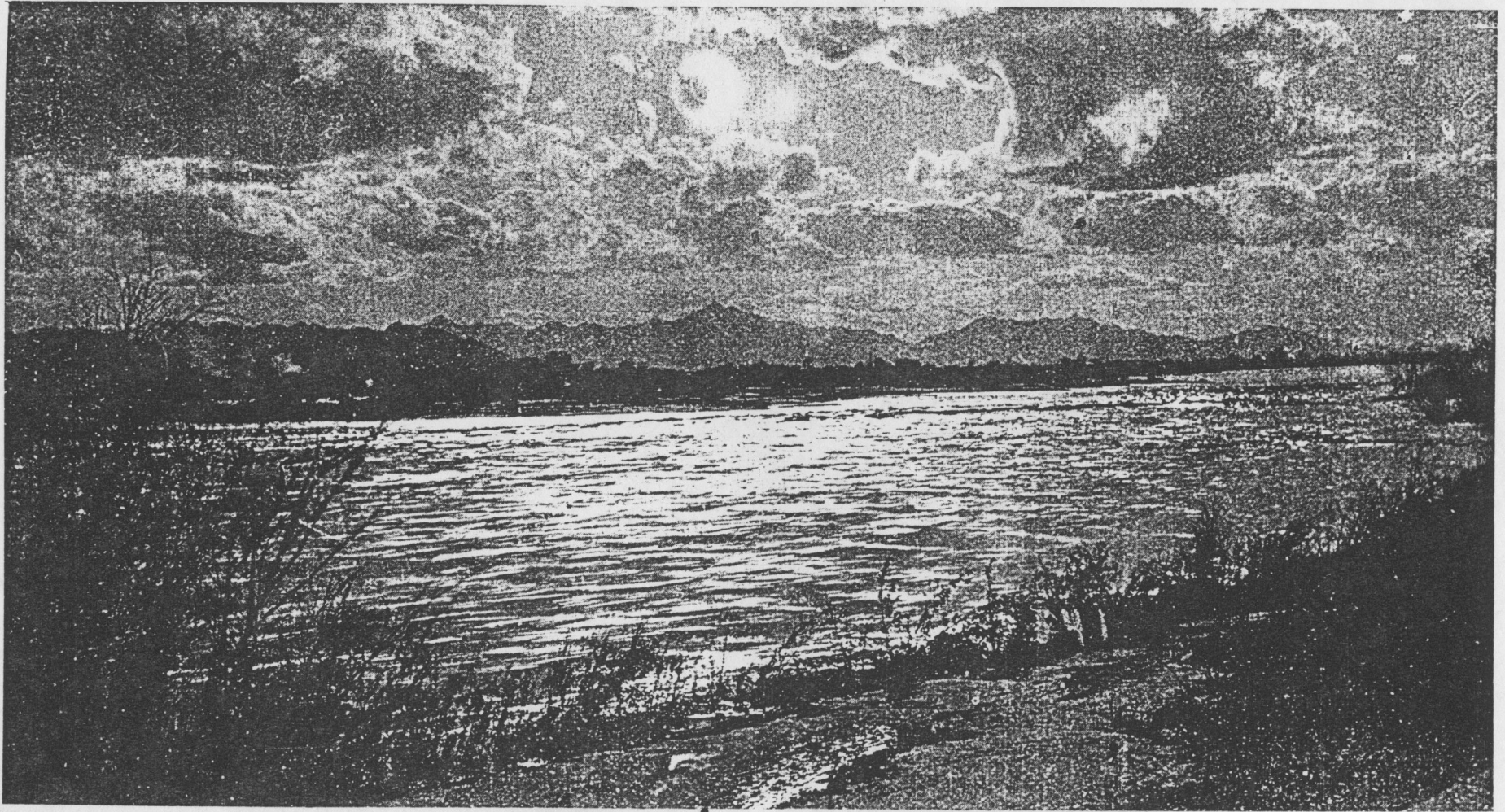
NEW CENTER STREET BRIDGE, PHOENIX, ARIZONA.

UNIVERSITY OF ARIZONA LIBRARY, SPECIAL COLLECTIONS, PHOENIX (ARIZ.)--BRIDGES, POST CARDS,
FOLDER 1. TINTED POST CARD W. H. CLUNE, LOS ANGELES, CALIFORNIA. POST MARKED
SEP. 1, 1911, PHOENIX, ARIZ.

1911



SBR OTHER CENTER ST BRIDGES (> 1 MILE LONG : 04m)



Moonlight on Salt River, Near Phoenix

UNIVERSITY OF ARIZONA LIBRARY, SPECIAL COLLECTIONS, SALT RIVER (ARIZ.): PHOTOGRAPHS, POST
CARDS, FOLDER 1 (FROM CHARLES U. PICKRELL COLLECTION)

P22 1896

No 23



For some things horses were better, such as crossing the Salt River.

CP MCL 98190. PAX 71



GROUP OF MEN HOLDING STRINGS OF FISH NEAR AN
IRRIGATION CANAL, SCOTTSDALE, AZ. 1899

SEARCH: PHOTOGRAPHS OF FISH

CP MCL 97929.54

Location

Hayden Arizona Collection

Call Number

CP MCL 84438.A78-84441.A78

ID

42743

Title

Photograph: Emma and Ella Luhrs Fishing With Hazel DeMund. S.L., 1910

Personal Names

[De Mund, Hazel \(?q="De+Mund%2C+Hazel"&type=personal_names\)](#) — [Taylor, Ella Luhrs \(?q="Taylor%2C+Ella+Luhrs"&type=personal_names\)](#) — [Stroud, Emma Luhrs \(?q="Stroud%2C+Emma+Luhrs"&type=personal_names\)](#)

Publisher

Luhrs Family Photograph Collection

Publication Date

1910

Collections

[LP Luhrs Photographs \(?q="LP+Luhrs+Photographs"&type=collections\)](#)

Notes

Digital Photograph

Location

Hayden Arizona Collection

Image(s):



(http://www.asu.edu/lib/archives/digital-collections/AZSI/full/CP_LFPC_1657_25.JPG)

Call Number

CP LFPC-1657.25

ID

38239

Title

Photograph: **Group of Men Holding Strings of Fish Near an Irrigation Canal. Scottsdale, Arizona**

Publisher

Herb & Dorothy McLaughlin Photographs

Date

1899

Collections

[ML McLaughlin Photographs \(MCL Scottsdale/Carefree\) \(?q="ML+McLaughlin+Photographs+%2BMCL+Scottsdale%2FCarefree%29"&type=collections\)](#)

Notes

Original in the Mrs. Allen Houle Collection. -- Digital Photograph

Location

Hayden Arizona Collection

Image(s):



(http://www.asu.edu/lib/archives/digital-collections/AZSI/full/CP_MCL_97929.JPG)

Call Number

CP MCL 97929.S4

ID

44615

Title

Photograph: Man fishing in Oak Creek near Sedona Lodge. Sedona, Arizona, C.1965

Author

McLaughlin, Herb & Dorothy





OBLIQUE AERIAL OF HAYDEN FLOUR MILL, LA CASA VIEJA, AND SALT RIVER, TEMPE, AZ 1925

CP CTH 121

SEARCH: PHOTOGRAPHS OF SALT RIVER

ID
74784

Title

Photograph: Oblique Aerial of Hayden Flour Mill, La Casa Vieja, and Salt River; Tempe, Arizona

Photographer

U.S. Army Air Corps, 15th Photo

Date

C. 1925

Collections

[CP Photographs \(?q="CP+Photographs"&type=collections\)](#)

Notes

Withdrawn from Hayden papers 499/16. -- Digital Photograph

Subjects

[Tempe, Arizona \(?q="Tempe%2C+Arizona"&type=subjects\)](#) — [Mill Avenue, Tempe \(?q="Mill+Avenue%2C+Tempe"&type=subjects\)](#) — [Hayden Mill \(?q="Hayden+Mill"&type=subjects\)](#) — [Architecture \(?q="Architecture"&type=subjects\)](#)

Location

Hayden Arizona Collection

Image(s):



(http://www.asu.edu/lib/archives/digital-collections/AZSI/full/CP_CTH_121.JPG)

Call Number

CP CTH 121

ID

33687

Title

Photograph: Salt-River-Project, Arizona-Eastern-Railroad Bridge Haer Report Az-18; Tempe, Arizona, 1989

Author

Behan, Barbara

Personal Names

[Durben, Mark \(?q="Durben%2C+Mark"&type=personal_names\)](#) — [Photographer \(?q="Photographer"&type=personal_names\)](#)

Publication Date

1989

Collections

[CP Photographs \(?q="CP+Photographs"&type=collections\)](#)

Subjects

[Railroads \(?q="Railroads"&type=subjects\)](#) — [Bridges \(?q="Bridges"&type=subjects\)](#) — [Salt River \(?q="Salt+River"&type=subjects\)](#) — [Tempe Butte \(?q="Tempe+Butte"&type=subjects\)](#) — [Hayden Flour Mill \(?q="Hayden+Flour+Mill"&type=subjects\)](#) — [Southern Pacific Railroad \(?q="Southern+Pacific+Railroad"&type=subjects\)](#) — [Historic American Engineering Record \(?q="Historic+American+Engineering+Record"&type=subjects\)](#)

Location

Hayden Arizona Collection

Call Number

CP MSM 146.2-8

ID

33583

Title

Photograph: Luhrs-Family Members on Jefferson-Street Looking East from Central-Avenue; Phoenix, Arizona, c.1900

Author

Eisele, Mrs. Edward

Personal Names

[Dodenhoff, Marie \(?q="Dodenhoff%2C+Marie"&type=personal_names\)](#) — [Luhrs, Arthur Cleveland \(?q="Luhrs%2C+Arthur+Cleveland"&type=personal_names\)](#) — [Luhrs, George H. N. Jr. \(?q="Luhrs%2C+George+H.+N.+Jr."&type=personal_names\)](#) — [Luhrs, Mrs. George H. N. \(?q="Luhrs%2C+Mrs.+George+H.+N."&type=personal_names\)](#)

Publication Date

1900





ARIZONA STATE UNIVERSITY (ASU) STUDENTS SWIMMING
IN THE SALT RIVER 1930

UP UPC ASUG S882 1930:13

SEARCH: PHOTOGRAPHS SALT RIVER

ASU Special Materials Index (/spmi)

Viewing results 1-2 of 2 for photographs of swimming salt river in All Fields ordered by Relevance.

[Update Search \(#\)](#)

Title

Photograph: [Arizona State University \(ASU\) Students Swimming in the Salt River, c.1930](#)

Date

[c.1930](#)

Collections

[UP Photographs \(?q="UP+Photographs"&type=collections\)](#)

Notes

Digital Photograph

Subjects

[Arizona State University \(ASU\) \(?q="Arizona+State+University+%28ASU%29"&type=subjects\)](#) — [Tempe, Arizona \(?q="Tempe%2C+Arizona"&type=subjects\)](#)
 — [Salt River \(?q="Salt+River"&type=subjects\)](#) — [Students \(?q="Students"&type=subjects\)](#)

Location

Hayden Archives

Image(s):



(http://www.asu.edu/lib/archives/digital-collections/UARI/full/UP_ASUG_S882_1930S_13.JPG)

Call Number

UP UPC ASUG S882 1930:13

ID

74920

Title

Photograph: [Boy diving into the Salt River. Phoenix, Arizona, 1917](#)

Publisher

Herb & Dorothy McLaughlin Photographs

Publication Date

1917

Collections

[ML McLaughlin Photographs \(?q="ML+McLaughlin+Photographs"&type=collections\)](#)

Notes

Copy photograph. Original in the Rev. Fred A. McNeil Collection. -- See: Phoenix, 1870-1970 p.70

Subjects

[Rivers \(?q="Rivers"&type=subjects\)](#) — [Swimming \(?q="Swimming"&type=subjects\)](#)

Location

Hayden Arizona Collection

Call Number

CP MCL 97844.PHX70

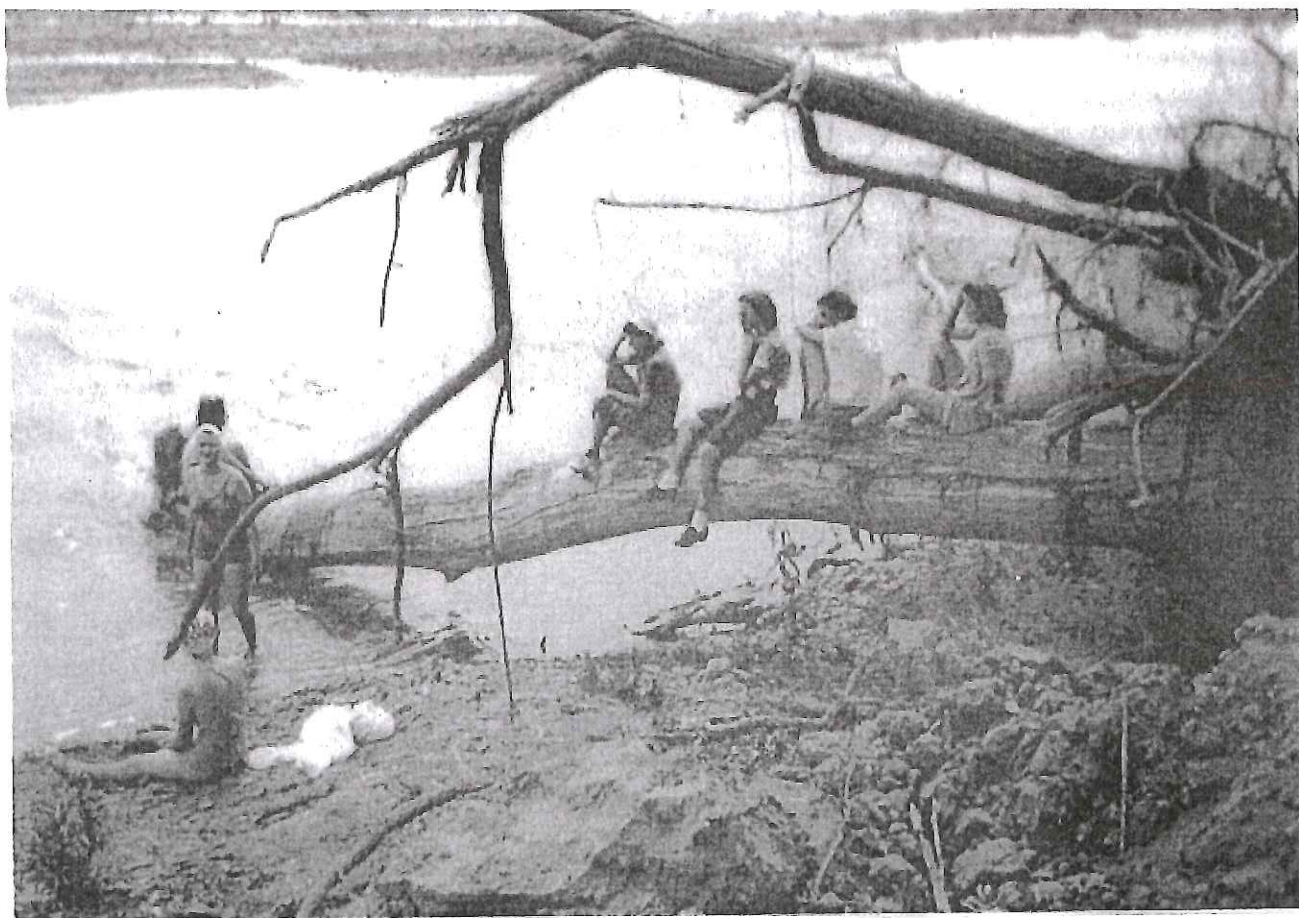
ID

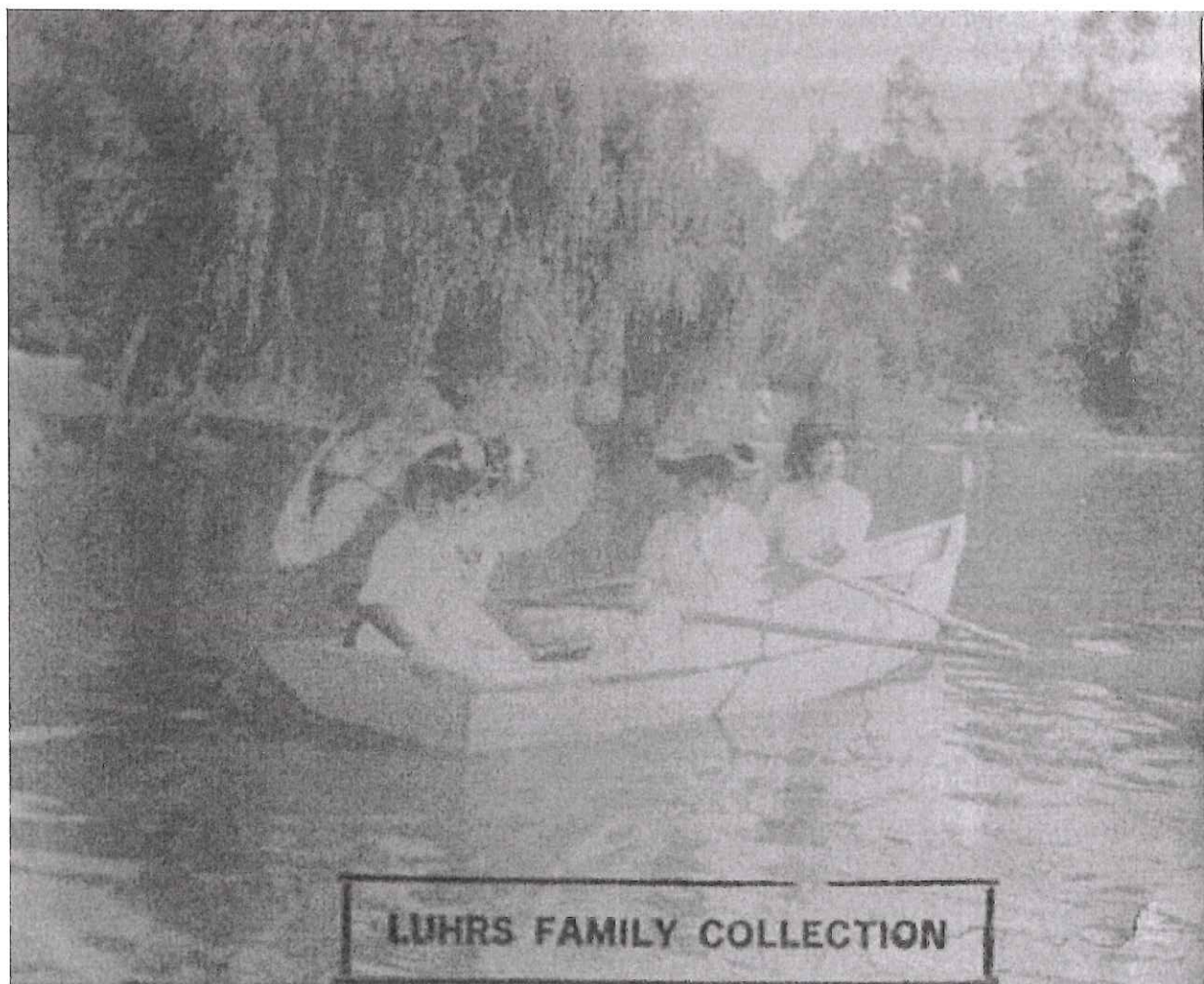
42246

[Copyright & Trademark \(http://www.asu.edu/copyright/\)](http://www.asu.edu/copyright/) [Accessibility \(http://www.asu.edu/accessibility/\)](http://www.asu.edu/accessibility/) [Privacy \(http://www.asu.edu/privacy/\)](http://www.asu.edu/privacy/) [Emergency](#)

(<http://www.asu.edu/emergency/>) [Contact ASU \(http://www.asu.edu/contactasu/\)](http://www.asu.edu/contactasu/)

ASU Libraries, Arizona State University | P.O. Box 871006 Tempe, AZ 85287 | 300 East Orange Mall | [Maps and Locations \(http://lib.asu.edu/maps/\)](http://lib.asu.edu/maps/) | 480-965-6164 | askalib@asu.edu | askalib@asu.edu





FOUR WOMEN IN A ROWBOAT, S.L.C. 1910
UNKNOWN LOCATION
CP LFPC - 1657-48



(http://www.asu.edu/lib/archives/digital-collections/AZSI/full/CP_LFPC_1601.JPG)



(http://www.asu.edu/lib/archives/digital-collections/AZSI/full/CP_LFPC_1602.JPG)



(http://www.asu.edu/lib/archives/digital-collections/AZSI/full/CP_LFPC_1603.JPG)

Call Number

CP LFPC-1601-1603

ID

37547

Title

Photograph: Four Women in a Row Boat. S.L., C.1910

Publisher

Luhrs Family Photograph Collection

Publication Date

1910

Collections

[LP Luhrs Photographs \(?q="LP+Luhrs+Photographs"&type=collections\)](#)

Notes

Digital Photograph

Location

Hayden Arizona Collection

Image(s):



(http://www.asu.edu/lib/archives/digital-collections/AZSI/full/CP_LFPC_1657_48.JPG)

Call Number

CP LFPC-1657.48

ID

38253

Title

Photograph: Panoramic View of Catalina Island Showing the Bay, Wharfs Where Boats Land From San Pedro. Catalina Island, California, c.1910

Publisher

Luhrs Family Photograph Collection

Publication Date

1910

Collections

[LP Luhrs Photographs \(?q="LP+Luhrs+Photographs"&type=collections\)](#)

Notes

Digital Photograph

Location

Hayden Arizona Collection

Image(s):



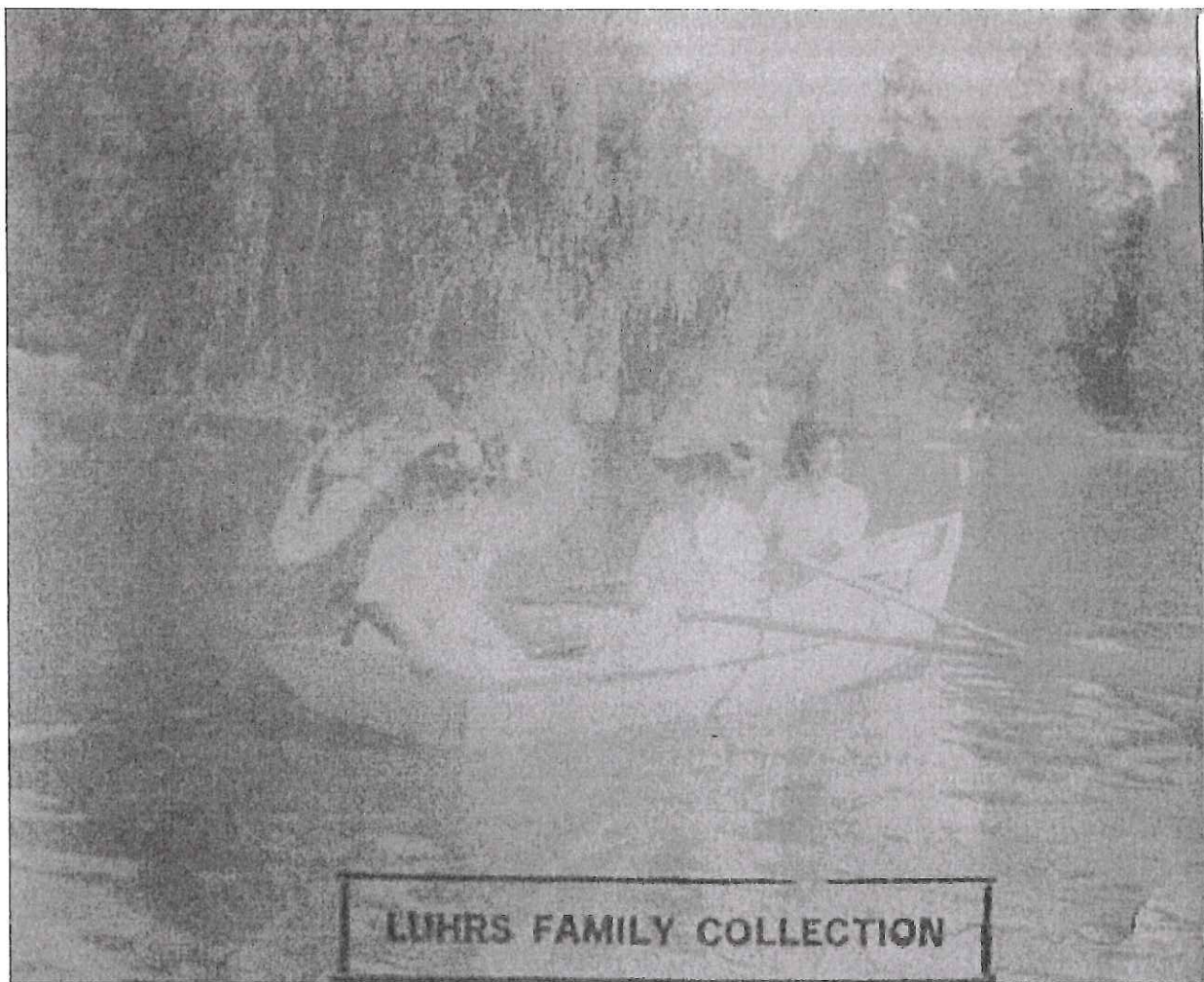
(http://www.asu.edu/lib/archives/digital-collections/AZSI/full/CP_LFPC_1657_39.JPG)

Call Number

CP LFPC-1657.39

ID

38249





SNAPSHOT OF THREE WOMEN BY THE SACT RIVER AT HIGH WATER,
PHOENIX, ARIZONA, 1900
CP LFPC-1095



ASU Home (<http://www.asu.edu/>) My ASU (<https://my.asu.edu/>)
 Colleges & Schools (<http://www.asu.edu/colleges/>) A-Z Index (<http://www.asu.edu/index/>)
 Directory (<http://www.asu.edu/directory/>) Map (<http://www.asu.edu/map/>)
 SIGN IN (<HTTPS://WEBLOGIN.ASU.EDU/CGI-BIN/LOGIN?CALLAPP=##W.L##>)

ASU Special Materials Index (/spmi)

Viewing results 1-2 of 2 for luhrs women salt river in All Fields ordered by Relevance.

[Update Search \(#\)](#)

Title

Photograph: Snapshot of Three Women by the Salt River at High Water; Phoenix, Arizona, 1900

Publisher

Luhrs Family Photograph Collection

Publication Date

1900

Collections

[LP Luhrs Photographs \(?q="LP+Luhrs+Photographs"&type=collections\)](#)

Notes

Digital Photograph

Subjects

[Salt River \(?q="Salt+River"&type=subjects\)](#) — [Floods \(?q="Floods"&type=subjects\)](#)

Location

Hayden Arizona Collection

Image(s):



(http://www.asu.edu/lib/archives/digital-collections/AZSI/full/CP_LFPC_1095.JPG)

Call Number

CP LFPC-1095

ID

30760

Title

Photograph: Women Near the Salt-River at High-Water; Phoenix, Arizona, C.1900

Publication Date

1900

Collections

[LP Luhrs Photographs \(?q="LP+Luhrs+Photographs"&type=collections\)](#)

Subjects

[Women \(?q="Women"&type=subjects\)](#) — [Salt River \(?q="Salt+River"&type=subjects\)](#)

Location

Hayden Arizona Collection

Call Number

CP LFPC-109

ID

27614

[Copyright & Trademark \(http://www.asu.edu/copyright/\)](http://www.asu.edu/copyright/) [Accessibility \(http://www.asu.edu/accessibility/\)](http://www.asu.edu/accessibility/) [Privacy \(http://www.asu.edu/privacy/\)](http://www.asu.edu/privacy/) [Emergency](#)

(<http://www.asu.edu/emergency/>) [Contact ASU \(http://www.asu.edu/contactasu/\)](http://www.asu.edu/contactasu/)

ASU Libraries, Arizona State University | P.O. Box 871006 Tempe, AZ 85287 | 300 East Orange Mall | [Maps and Locations \(http://lib.asu.edu/maps\)](#) | 480-965-6164 | askalib@asu.edu
<mailto:askalib@asu.edu>





THE LUHR SISTERS & THE DEMOND SISTERS ON A CAMPING TRIP;
LOCATION UNKNOWN, C-1915

CP LFPC-839



http://www.asu.edu/lib/archives/digital-collections/AZSI/full/CP_LFPC_975.JPG

Call Number
CP LFPC-975
ID
30769

Title

Photograph: Snapshot of Col. Arthur (Cap) Taylor and Ella Luhrs Taylor; Camp-Kearny, California, 1918

Author

Taylor, Authur

Personal Names

[Luhrs, Ella \(?q="Luhrs%2C+Ella"&type=personal_names\)](#)

Publisher

Luhrs Family Photograph Collection

Publication Date

1918

Collections

[LP Luhrs Photographs \(?q="LP+Luhrs+Photographs"&type=collections\)](#)

Notes

Digital Photograph

Location

Hayden Arizona Collection

Image(s):



http://www.asu.edu/lib/archives/digital-collections/AZSI/full/CP_LFPC_978.JPG

Call Number
CP LFPC-978
ID
30770

Title

Photograph: **The Luhrs Sisters & The Demund Sisters on A Camping Trip; Location Unknown, C.1915**

Author

Taylor, Ella Luhrs

Personal Names

[Stroud, Emma Luhrs \(?q="Stroud%2C+Emma+Luhrs"&type=personal_names\)](#) — [Demund, Fay \(?q="Demund%2C+Fay"&type=personal_names\)](#) — [Demund, Hazel \(?q="Demund%2C+Hazel"&type=personal_names\)](#)

Publication Date

1915

Collections

[LP Luhrs Photographs \(?q="LP+Luhrs+Photographs"&type=collections\)](#)

Notes

Digital Photograph

Subjects

[Outings \(?q="Outings"&type=subjects\)](#)

Location

Hayden Arizona Collection

Image(s):



http://www.asu.edu/lib/archives/digital-collections/AZSI/full/CP_LFPC_839.JPG

Call Number

CP LFPC-839
ID
27753

Title

Photograph: Colonel Grimstead & Captain Helsley on Horseback; Camp-Kearny, California, 1918

Author

Grimstead, Col.

Personal Names

[Helsley, Capt. \(?q="Helsley%2C+Capt."&type=personal_names\)](#)

Publisher

Luhrs Family Photograph Collection

Publication Date

1918

Collections

[LP Luhrs Photographs \(?q="LP+Luhrs+Photographs"&type=collections\)](#)

Notes

Digital Photograph

Location

Hayden Arizona Collection

Image(s):



http://www.asu.edu/lib/archives/digital-collections/AZSI/full/CP_LFPC_965.JPG

Call Number
CP LFPC-965
ID
30766

Title

Photograph: Group Portrait; Camp-Kearny, California, 1918

Author

Hunt, George W. P.

Personal Names

[Bara, Theda \(?q="Bara%2C+Theda"&type=personal_names\)](#) — [Hess, Lt. \(?q="Hess%2C+Lt."&type=personal_names\)](#)

Publisher

Luhrs Family Photograph Collection

Publication Date

1918

Collections

[LP Luhrs Photographs \(?q="LP+Luhrs+Photographs"&type=collections\)](#)

Location

Hayden Arizona Collection

Call Number

CP LFPC-950

ID

30791

Title

Photograph: Ella Luhrs Taylor, Red-Cross-Nurse with 158th Infantry; Camp-Kearny, California, 1918

Publication Date

1918

Collections

[LP Luhrs Photographs \(?q="LP+Luhrs+Photographs"&type=collections\)](#)

Notes

Digital Photograph

Location

Hayden Arizona Collection





FAY L. HARTZEL DEMONSTRATING ELCA LUHRS ON A CAMPUS-TREE,
LOCATION UNKNOWN 1945

[Taylor, Ella Luhrs \(?q="Taylor%2C+Ella+Luhrs"&type=personal_names\)](#) — [Stroud, Emma Luhrs \(?q="Stroud%2C+Emma+Luhrs"&type=personal_names\)](#) — [De Mund, Hazel \(?q="De+Mund%2C+Hazel"&type=personal_names\)](#) — [De Mund, Fay \(?q="De+Mund%2C+Fay"&type=personal_names\)](#) — [De Mund, H. P. \(?q="De+Mund%2C+H.+P."&type=personal_names\)](#)

Publisher

Luhrs Family Photograph Collection

Publication Date

1910

Collections

[LP Luhrs Photographs \(?q="LP+Luhrs+Photographs"&type=collections\)](#)

Notes

Digital Photograph

Location

Hayden Arizona Collection

Image(s):



(http://www.asu.edu/lib/archives/digital-collections/AZSI/full/CP_LFPC_1657_26.JPG)



(http://www.asu.edu/lib/archives/digital-collections/AZSI/full/CP_LFPC_1657_27.JPG)

[collections/AZSI/full/CP_LFPC_1657_27.JPG](#)

Call Number

CP LFPC-1657.26-1657.27

ID

38240

Title

Photograph: [Fay & Hazel Demund & Ella Luhrs on A Camping-Trip; Location Unknown, c.1915](#)

Author

[Demund, Fay](#)

Personal Names

[Demund, Hazel \(?q="Demund%2C+Hazel"&type=personal_names\)](#) — [Taylor, Ella Luhrs \(?q="Taylor%2C+Ella+Luhrs"&type=personal_names\)](#)

Publication Date

1915

Collections

[LP Luhrs Photographs \(?q="LP+Luhrs+Photographs"&type=collections\)](#)

Notes

Digital Photograph

Subjects

[Camping \(?q="Camping"&type=subjects\)](#)

Location

Hayden Arizona Collection

Image(s):



(http://www.asu.edu/lib/archives/digital-collections/AZSI/full/CP_LFPC_928.JPG)

Call Number

CP LFPC-928

ID

27362

Title

Photograph: [Demund Camping Trip; Location Unknown, 1910](#)

Publication Date

1910

Collections

[LP Luhrs Photographs \(?q="LP+Luhrs+Photographs"&type=collections\)](#)

Notes

Digital Photograph

Subjects

[Camping Arizona \(?q="Camping+Arizona"&type=subjects\)](#) — [Demund Family \(?q="Demund+Family"&type=subjects\)](#) — [Travel \(?q="Travel"&type=subjects\)](#)

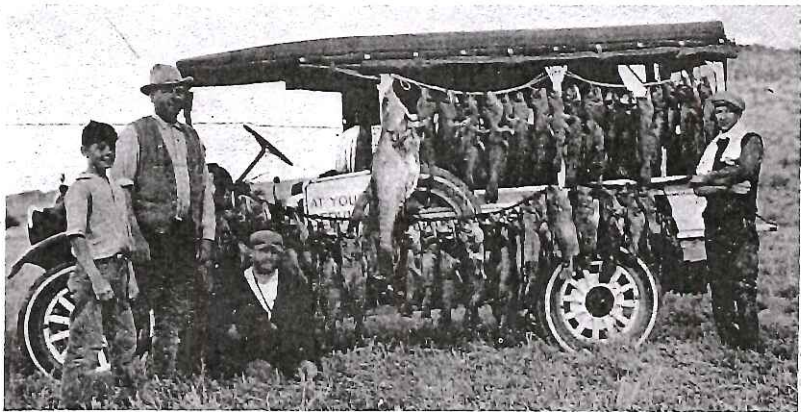
LUHR'S FAMILY COLLECTION





For some things horses were better, such as crossing the Salt River.

CP MCL 97728-A3



They weren't really bragging. It was only a fair day's catch.



The "Ole Swimmin Hole" in 1917 was in the Salt River west of town. Boys dove under banks to catch fish in bare hands.





ASU Home (<http://www.asu.edu/>) My ASU (<https://my.asu.edu/>)
 Colleges & Schools (<http://www.asu.edu/colleges/>) A-Z Index (<http://www.asu.edu/index/>)
 Directory (<http://www.asu.edu/directory/>) Map (<http://www.asu.edu/map/>)
 SIGN IN (<HTTPS://WEBLOGIN.ASU.EDU/CGI-BIN/LOGIN?CALLAPP=##W.L##>)

ASU Special Materials Index (/spmi)

[previous \(/spmi?q=Photographs+of+fish&orderby=relevance&dbpiece=all&type=all&page=2\)](#) [1 \(/spmi?q=Photographs+of+fish&orderby=relevance&dbpiece=all&type=all&page=1\)](#) [2 \(/spmi?q=Photographs+of+fish&orderby=relevance&dbpiece=all&type=all&page=2\)](#) [3 \(/spmi?q=Photographs+of+fish&orderby=relevance&dbpiece=all&type=all&page=3\)](#) [4 \(/spmi?q=Photographs+of+fish&orderby=relevance&dbpiece=all&type=all&page=4\)](#) [next \(/spmi?q=Photographs+of+fish&orderby=relevance&dbpiece=all&type=all&page=4\)](#)

Viewing results 41-60 of 70 for Photographs of fish in All Fields ordered by Relevance.

[Update Search \(#\)](#)

Title

Photograph: Grade Leads Along the Face of A Gigantic Precipice; Fish-Creek-Canyon, Arizona, 1916

Publisher

Southern Pacific Railroad

Publication Date

1916

Collections

[CP Photographs \(?q="CP+Photographs"&type=collections\)](#)

Notes

<S=Apache Trail: The Wonder Trip Through Oldest America><D=1=Silver Gelatin Photoprint>

Subjects

[Fish Creek Canyon \(?q="Fish+Creek+Canyon"&type=subjects\)](#) — [Automobiles \(?q="Automobiles"&type=subjects\)](#) — [Roads \(?q="Roads"&type=subjects\)](#) — [Canyons \(?q="Canyons"&type=subjects\)](#)

Location

Hayden Arizona Collection

Call Number

CP SPC 44-75.35

ID

29995

Title

Photograph: Fishing for The Hard-Fighting Black Bass...; Roosevelt-Lake, Arizona, 1916

Publisher

Southern Pacific Railroad

Publication Date

1916

Collections

[CP Photographs \(?q="CP+Photographs"&type=collections\)](#)

Notes

<S=Apache Trail: The Wonder Trip Through Oldest America><D=1=Silver Gelatin Photoprint>

Subjects

[Lakes \(?q="Lakes"&type=subjects\)](#) — [Fishing \(?q="Fishing"&type=subjects\)](#) — [Boats & Boating \(?q="Boats+%26+Boating"&type=subjects\)](#)

Location

Hayden Arizona Collection

Call Number

CP SPC 44-75.15

ID

30009

Title

Photograph: **Boy with a fishing pole standing next to a pair of oxen. Buckeye, Arizona, C.1910**

Publisher

Herb & Dorothy McLaughlin Photographs

Publication Date

1910

Collections

[ML McLaughlin Photographs \(MCL Cities - West\) \(?q="ML+McLaughlin+Photographs+%28MCL+Cities+-+West%29"&type=collections\)](#)

Notes



F349



Location

Hayden Arizona Collection

Call Number

CP MCL 739.C45

ID

44883

Title

Photograph: Two Men in A Canoe on the Arizona-Canal; Phoenix, Arizona, C.1920

Publication Date

1920

Collections

[ML McLaughlin Photographs \(?q="ML+McLaughlin+Photographs"&type=collections\)](#)

Subjects

[Canals \(?q="Canals"&type=subjects\)](#) — [Irrigation \(?q="Irrigation"&type=subjects\)](#) — [Boats & Boating \(?q="Boats+%26+Boating"&type=subjects\)](#)

Location

Hayden Arizona Collection

Call Number

CP MCLMB-A394

A395 TWO MEN

ID

27251

A397 ONE MAN

Title

Photograph: Drawing of river boats floating down Grand Canyon. S.L., C.1965

Author

McLaughlin, Herb & Dorothy

Photographer

Photographers

Publisher

Herb & Dorothy McLaughlin Photographs

Publication Date

1965

Collections

[ML McLaughlin Photographs \(MCL Agriculture, Irrigation, Floods\) \(?q="ML+McLaughlin+Photographs+%28MCL+Agriculture%2C+Irrigation%2C+Floods%29"&type=collections\)](#)

Location

Hayden Arizona Collection

Call Number

CP MCL 91357.A3

ID

43789

Copyright & Trademark (<http://www.asu.edu/copyright/>) Accessibility (<http://www.asu.edu/accessibility/>) Privacy (<http://www.asu.edu/privacy/>) Emergency(<http://www.asu.edu/emergency/>) Contact ASU (<http://www.asu.edu/contactasu/>)ASU Libraries, Arizona State University | P.O. Box 871006 Tempe, AZ 85287 | 300 East Orange Mall | [Maps and Locations \(http://lib.asu.edu/maps\)](#) | 480-965-6164 | askalib@asu.edu (<mailto:askalib@asu.edu>)





ASU Home (<http://www.asu.edu/>) My ASU (<https://my.asu.edu/>)
 Colleges & Schools (<http://www.asu.edu/colleges/>) A-Z Index (<http://www.asu.edu/index/>)
 Directory (<http://www.asu.edu/directory/>) Map (<http://www.asu.edu/map/>)
 SIGN IN (<HTTPS://WEBLOGIN.ASU.EDU/CGI-BIN/LOGIN?CALLAPP=##W.L##>)

ASU Special Materials Index (/spmi)

SEARCH: PHOTOGRAPHS OF
FISH

1 </spmi?q=Photographs+of+fish&orderby=relevance&dbpiece=all&type=all&page=2> 3 </spmi?q=Photographs+of+fish&orderby=relevance&dbpiece=all&type=all&page=3> 4 </spmi?q=Photographs+of+fish&orderby=relevance&dbpiece=all&type=all&page=4>

[next \(/spmi?q=Photographs+of+fish&orderby=relevance&dbpiece=all&type=all&page=2\)](/spmi?q=Photographs+of+fish&orderby=relevance&dbpiece=all&type=all&page=2)

Viewing results 1-20 of 70 for Photographs of fish in All Fields ordered by Relevance.

[Update Search \(#\)](#)

Title

Photograph: a Fish by A Scale; Location Unknown, N.D

Collections

[ML McLaughlin Photographs \(?q="ML+McLaughlin+Photographs"&type=collections\)](#)

Subjects

[Fish Culture \(?q="Fish+Culture"&type=subjects\)](#) — [Fishing \(?q="Fishing"&type=subjects\)](#)

Location

Hayden Arizona Collection

Call Number

CP MCLMB-A948

ID

27011

Title

Photograph: Top of Fish Creek Hill on the Apache Trail Overlooking Fish Creek Inn; Arizona, 1926

Publisher

Muir, (Gertrude) Photographs

Publication Date

1926

Collections

[CP Photographs \(?q="CP+Photographs"&type=collections\)](#)

Subjects

[Fish Creek Inn \(?q="Fish+Creek+Inn"&type=subjects\)](#) — [Fish Creek Hill \(?q="Fish+Creek+Hill"&type=subjects\)](#) — [Landscape \(?q="Landscape"&type=subjects\)](#)

Location

Hayden Arizona Collection

Call Number

CP GM:26

ID

35609

Title

Photograph: Portrait of a Young Boy Holding a Fishing Pole and Standing in Front of a Row of Hanging Fish. S.L., C.1890

59

Publisher

Dorothy Robinson Photographs

Publication Date

1890

Collections

[CP Photographs \(?q="CP+Photographs"&type=collections\)](#)

Notes

There is a tent in the background

Subjects

[Portraits \(?q="Portraits"&type=subjects\)](#) — [Children \(?q="Children"&type=subjects\)](#) — [Fish \(?q="Fish"&type=subjects\)](#) — [Fishing \(?q="Fishing"&type=subjects\)](#)
 — [Tents \(?q="Tents"&type=subjects\)](#)

Location

Hayden Arizona Collection

Call Number

CP RD 23:181

ID

37347