

City of Tempe
P.O. Box 5002
255 E. Marigold Ln.
Tempe, AZ 85281
480-350-8207



The Tempe Way *Our Mission* To make Tempe the best place to live, work and play. *We Value* People... Integrity... Respect... Openness... Creativity... Quality...

Water Utilities
Department

April 10, 2003

received
4-11-03

Hand Delivered
by Charlotte Benson.
glm

Mr. George Mehnert, Executive Director
Arizona Navigable Stream Adjudication Commission
1700 W. Washington St., Rm. 304
Phoenix, Arizona 85007

Subject: Hearing on Navigability of Lower Salt River

Dear Mr. Mehnert:

As requested by the Commission at the hearing concluded on April 8, 2003, the City of Tempe submits printouts of the slides shown by Chris Anaradian during his testimony. The City submits two sets of 8.5" by 11" color prints. Each set contains the twenty-three (23) images presented in slides at the April 7 hearing.

Sincerely,

A handwritten signature in cursive script that reads 'Charlotte Benson'.

Charlotte Benson
Assistant City Attorney

Encl.

Maricopa County, Lower Salt River
03-005-NAV
4/7/03
Evidence Item No. 046









View looking south-east from air during flood in 1930's



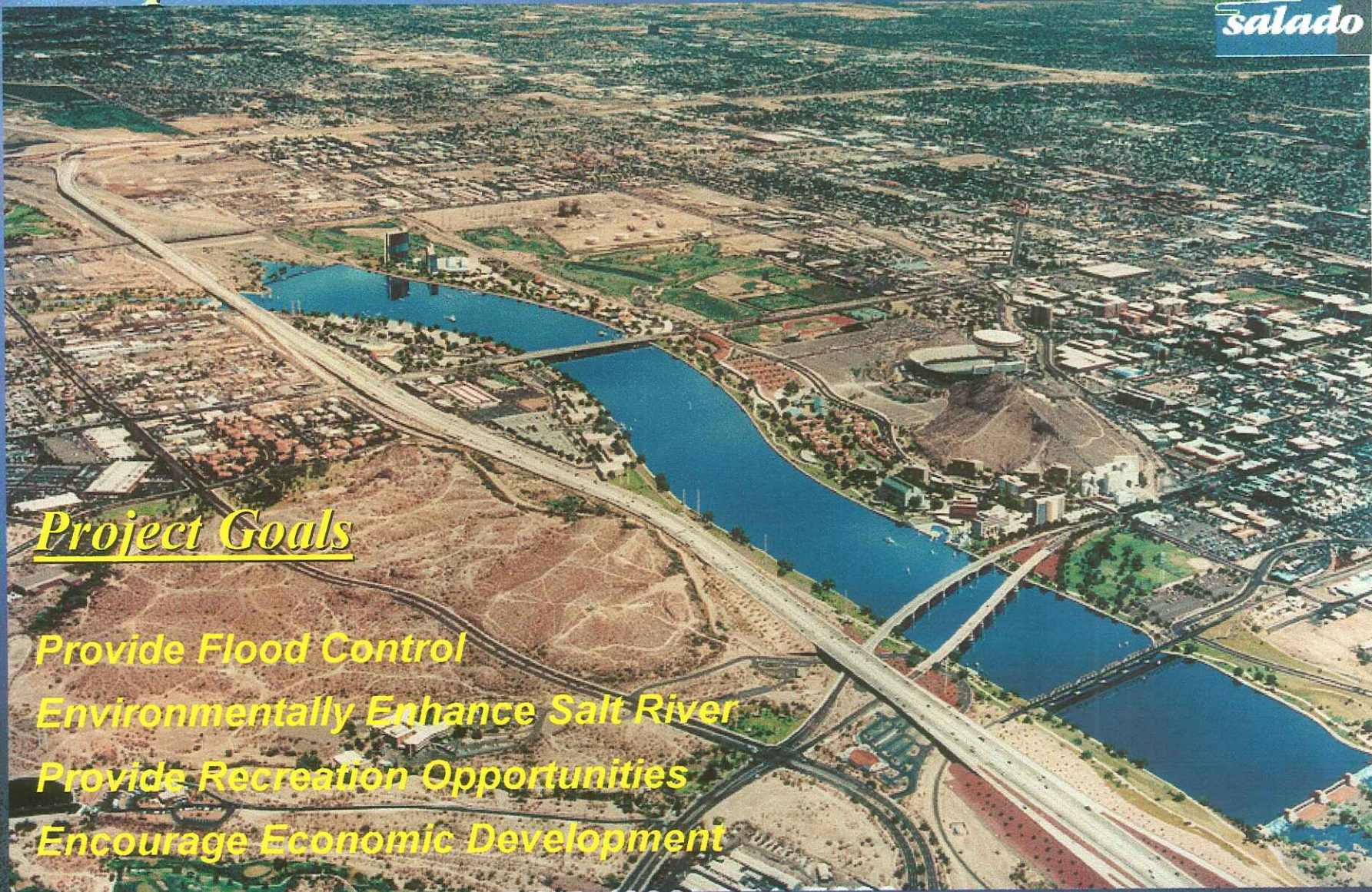
View looking north-west from air 1995.



View looking west from Rural Road prior to channelization in 1994

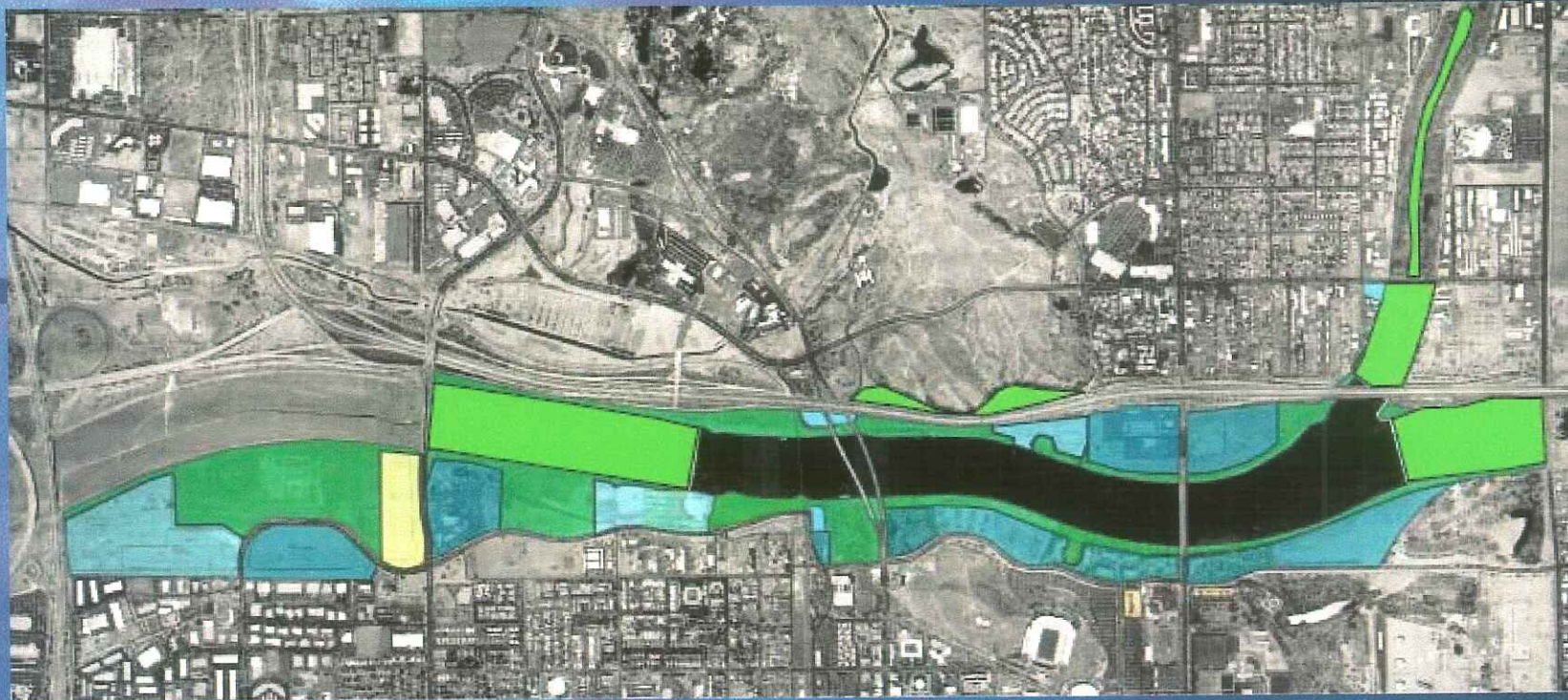


Tempe Town Lake on the Rio Salado

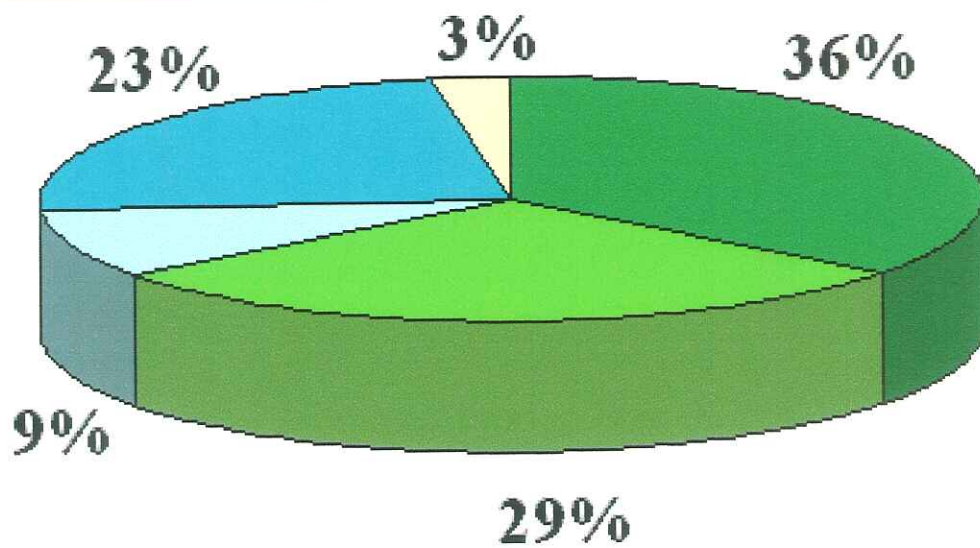


Project Goals

- Provide Flood Control*
- Environmentally Enhance Salt River*
- Provide Recreation Opportunities*
- Encourage Economic Development*



Rio Salado Project Land Use



- Parks / Open Space
- Habitat Restorations
- City Development
- Private Development
- Other





Rio Salado Tempe - Indian Bend Wash Reach



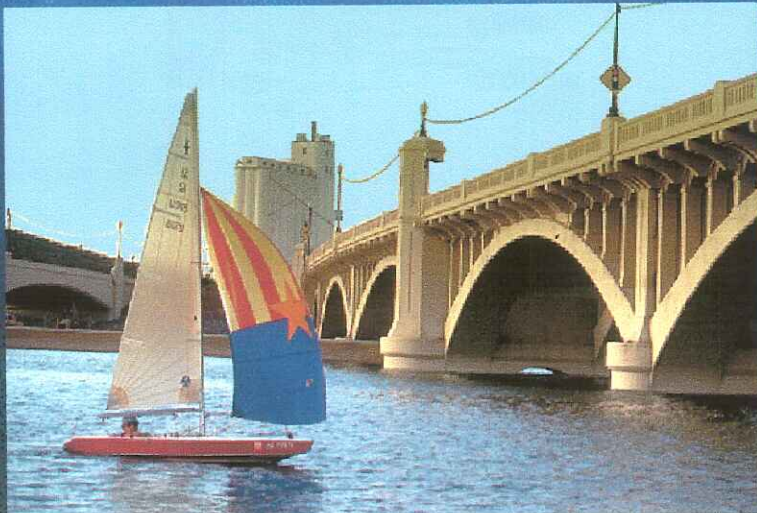
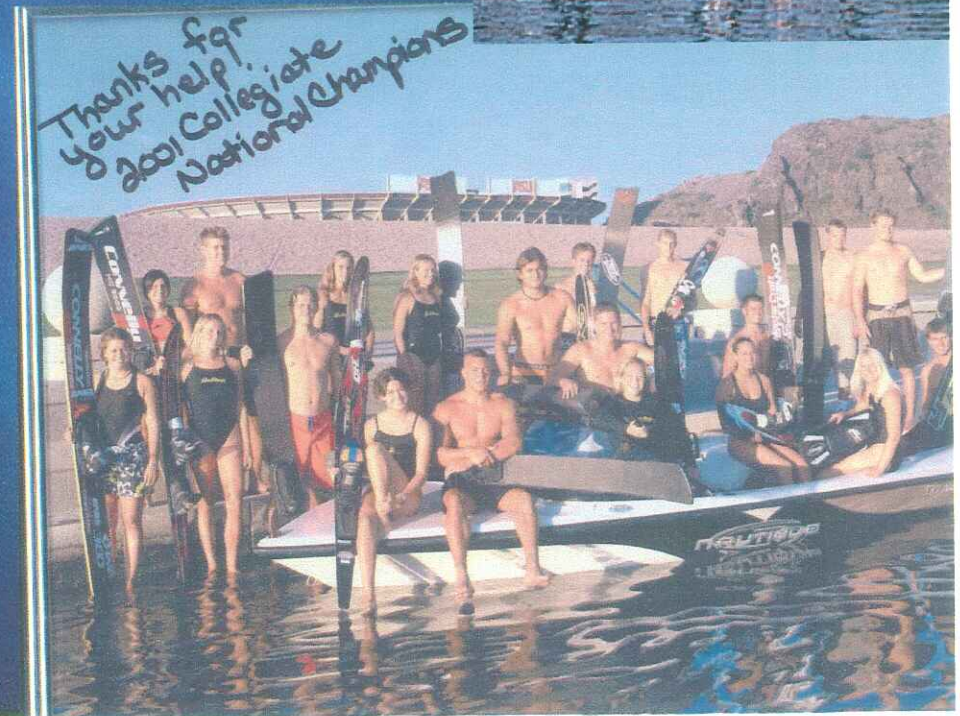
Army Corps Habitat Project



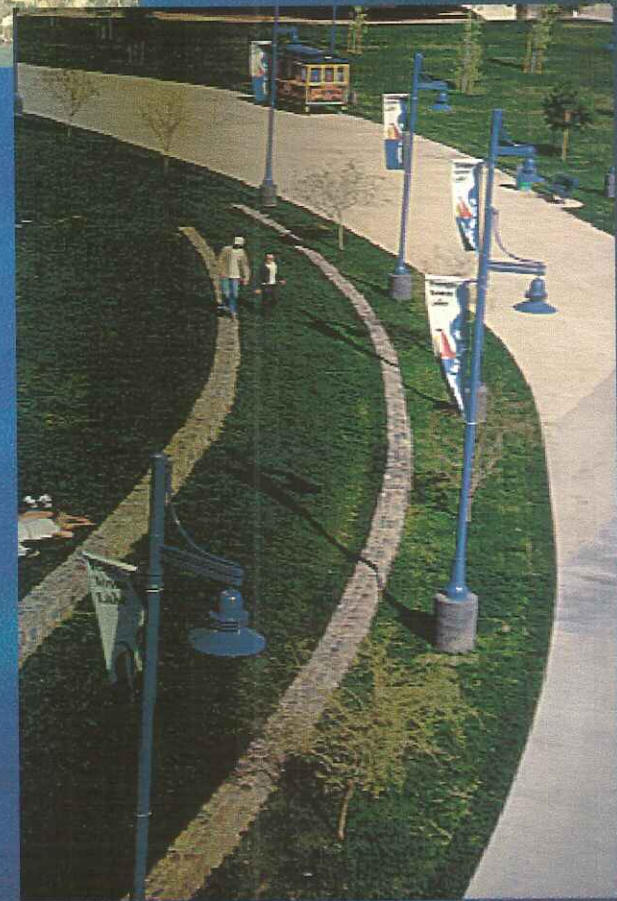
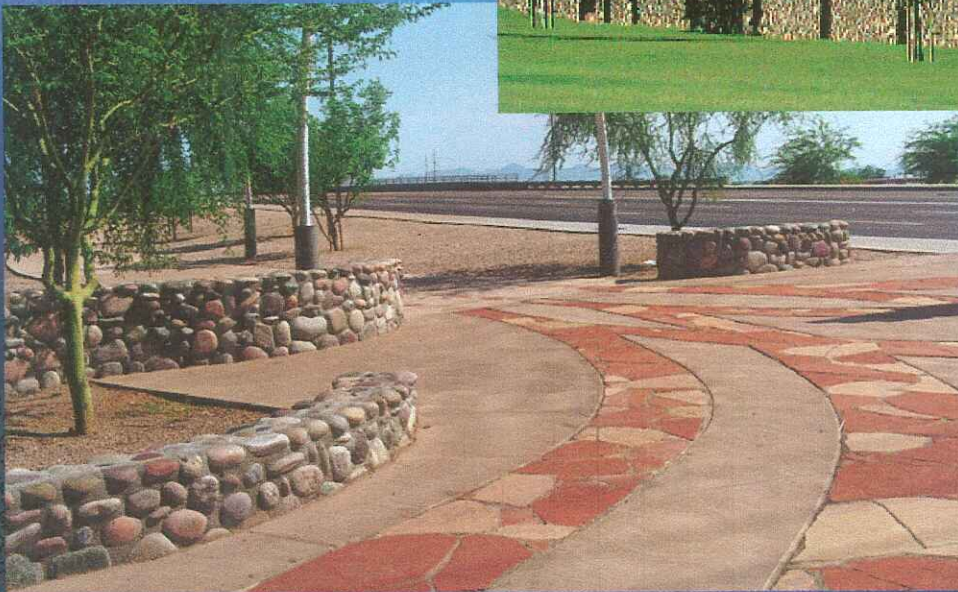
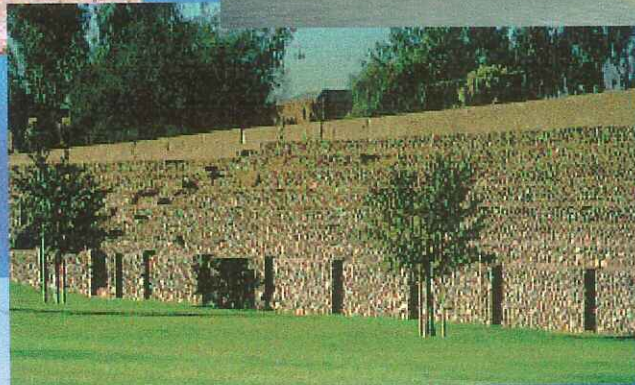
Lake Recreation



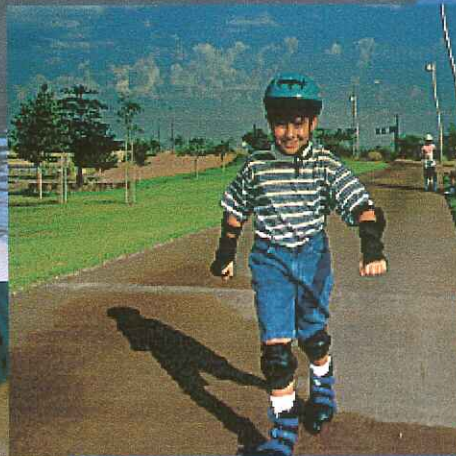
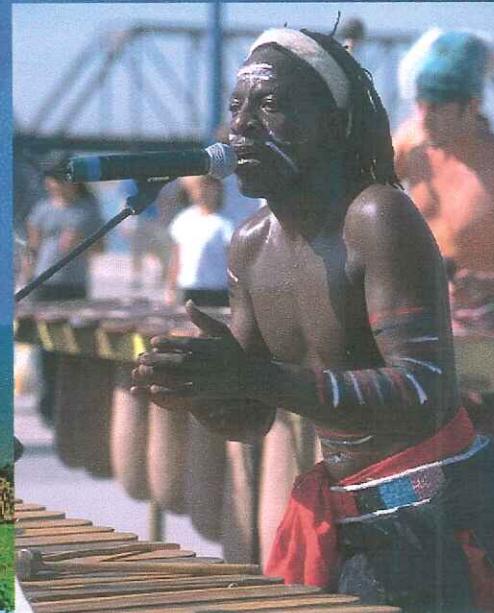
Lake Recreation



Park Features

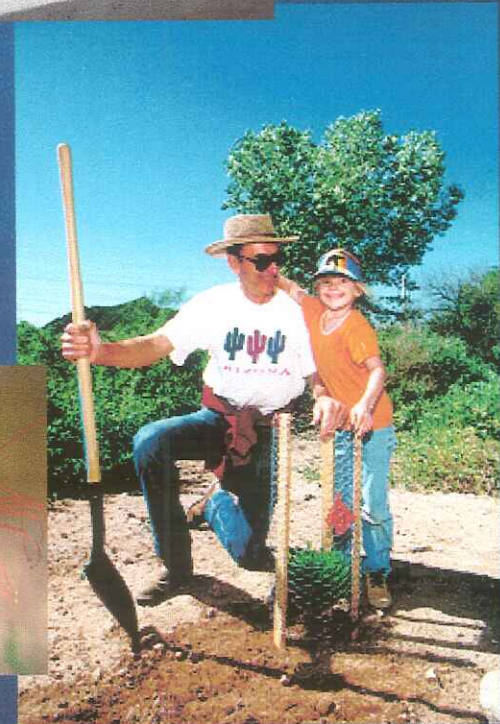


Park Activities & Events



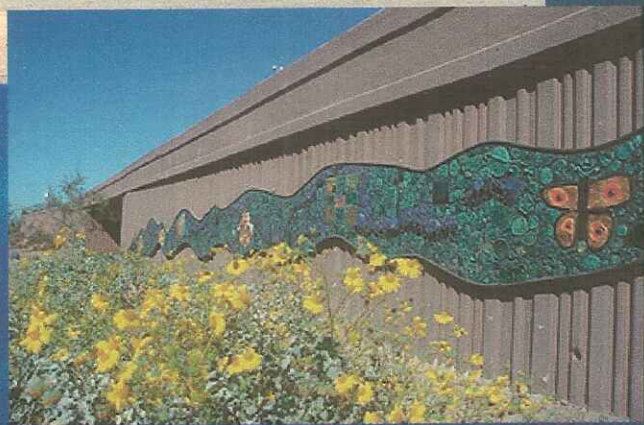
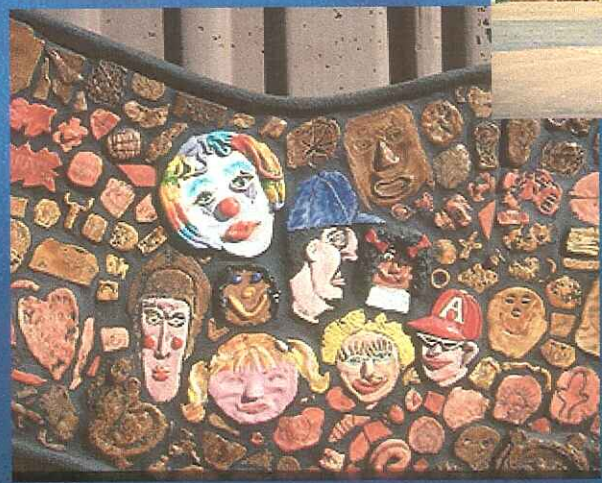


Environment





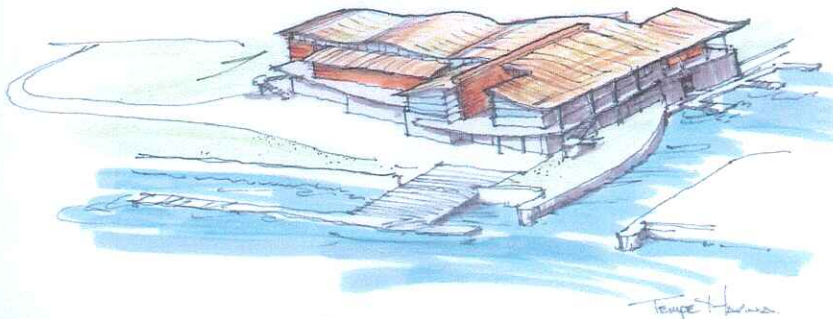
Public Art





Public Building Projects

Rio Salado Marina
ON TOWN LAKE



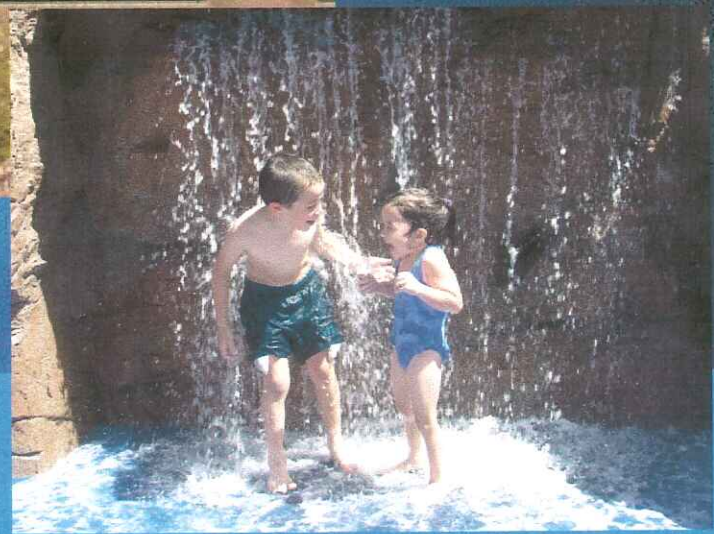
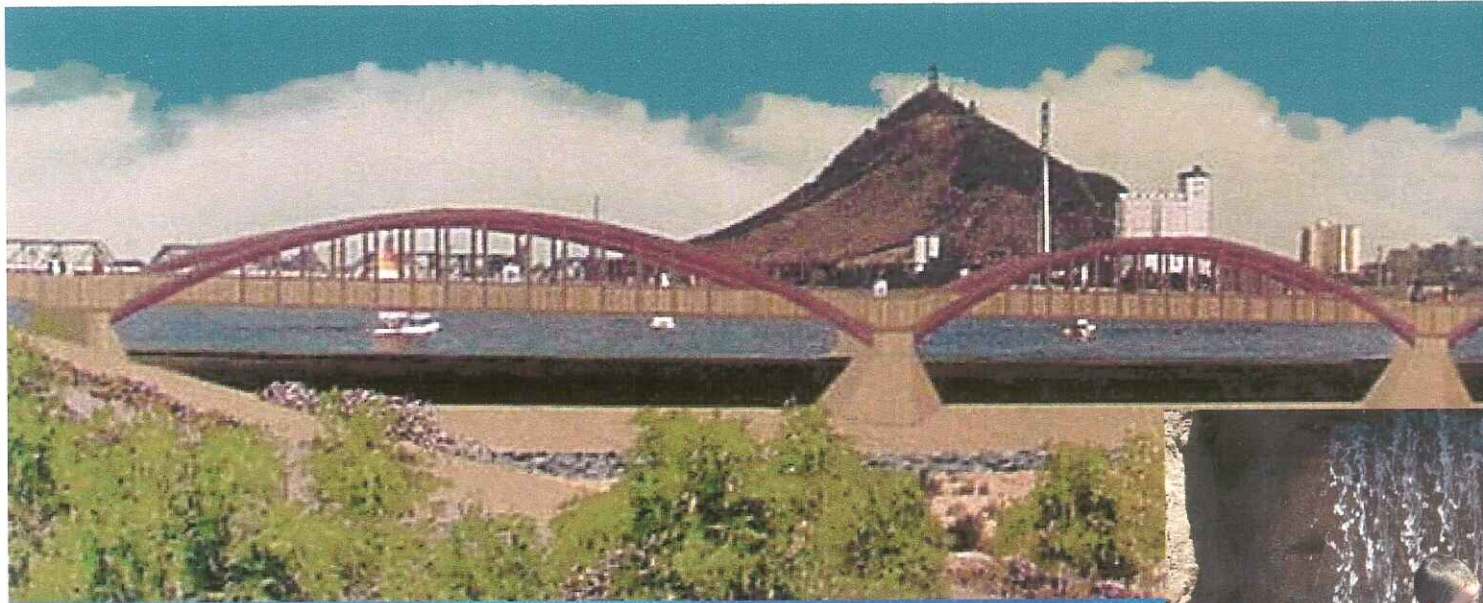
Site Plan



TETRAE

CENTER FOR THE ARTS

ARCHITECTON — Barton Myers Associates, Inc.



Partnerships

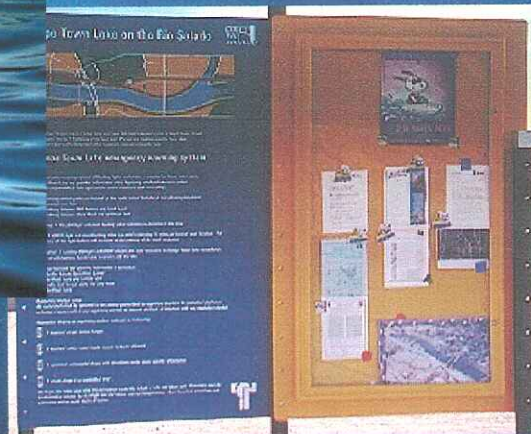
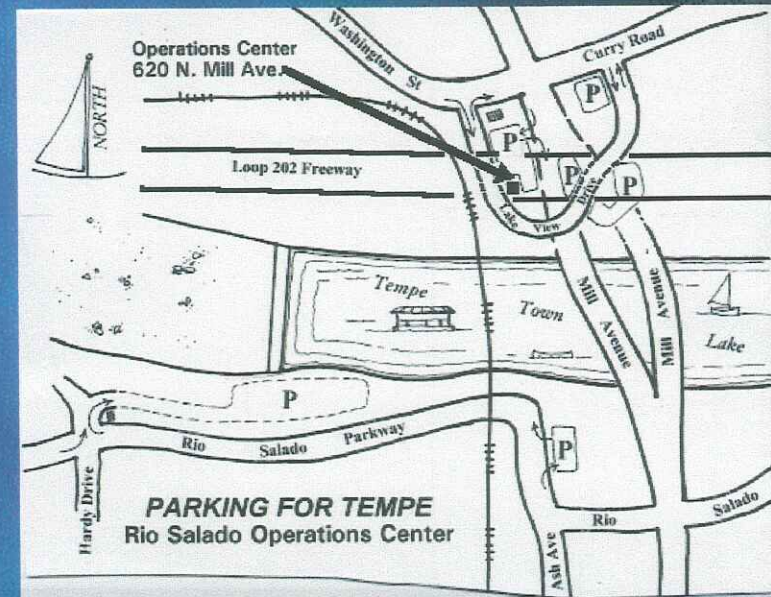


- AZ Department of Environmental Quality
- AZ Dept. of Transportation
- AZ Dept of Water Resources
- AZ Game and Fish Dept.
- AZ Office of Tourism
- AZ State Historic Preservation Office
- AZ State Land Department
- AZ State Parks
- AZ State University
- AZ Yacht Club
- Bass Angler's Sportsman Society
- Bureau of Land Management
- City of Phoenix
- City of Mesa
- Central AZ Paddlers Association
- Flood Control District of Maricopa County
- Salt River Project
- Central Arizona Project
- Friends of Rio Salado
- Greater Phoenix Economic Council
- Maricopa Association of Governments
- Papago Salado Association
- Regional Public Transit Authority
- Rio Salado Advisory Commission
- Rio Salado Enhanced Services Commission
- Rio Salado Rowing Club
- Rio Salado Town Lake Foundation
- Salt River Pima Maricopa Community
- Tempe Arts Commission
- U.S. Army Corps of Engineers
- U.S. Department of Agriculture
- U.S. Environmental Protection Agency
- U.S. Fish and Wildlife Services
- Voyages Unbound
- Valley Partnership

Project Stewardship



- Water Quality
- Public Safety
- Dams
- Park Maintenance
- Public Relations
- Events
- Emergency Response



Public Project Investment 1985-2007



<i>Channelization</i>	<i>\$ 41,000,000</i>
<i>Town Lake Construction</i>	<i>\$ 50,500,000</i>
<i>Art in the Park Projects</i>	<i>\$ 500,000</i>
<i>Tempe Beach Park</i>	<i>\$ 5,800,000</i>
<i>Splash Playground</i>	<i>\$ 1,700,000</i>
<i>Town Lake Marina</i>	<i>\$ 6,500,000</i>
<i>Linear Park System</i>	<i>\$ 16,500,000</i>
<i>Mill Avenue Bridges</i>	<i>\$ 10,700,000</i>
<i>Pedestrian Bridge</i>	<i>\$ 2,750,000</i>
<i>Performing Arts Center</i>	<i>\$ 65,000,000</i>
<i>Boathouse Project</i>	<i>\$ 3,500,000</i>
<i>Street Improvements</i>	<i>\$ 37,500,000</i>
<i>Utility Improvements</i>	<i>\$ 7,000,000</i>
<i>Land Purchases</i>	<i>\$ 20,000,000</i>
<i>Habitat Projects</i>	<i>\$ 8,500,000</i>
<i>Operational Costs</i>	<i>\$ 32,000,000</i>
<i>Financing Costs</i>	<i>\$20,000,000</i>
TOTAL	OVER \$ 325,000,000.00

Hayden Ferry Lakeside & Hayden Ferry South



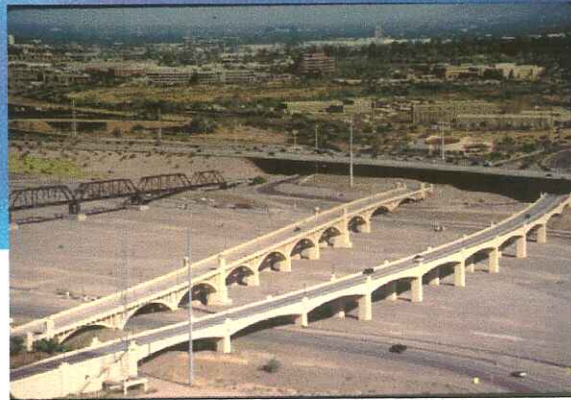
kitchen sink studio
www.kitchen-sink-studio.com







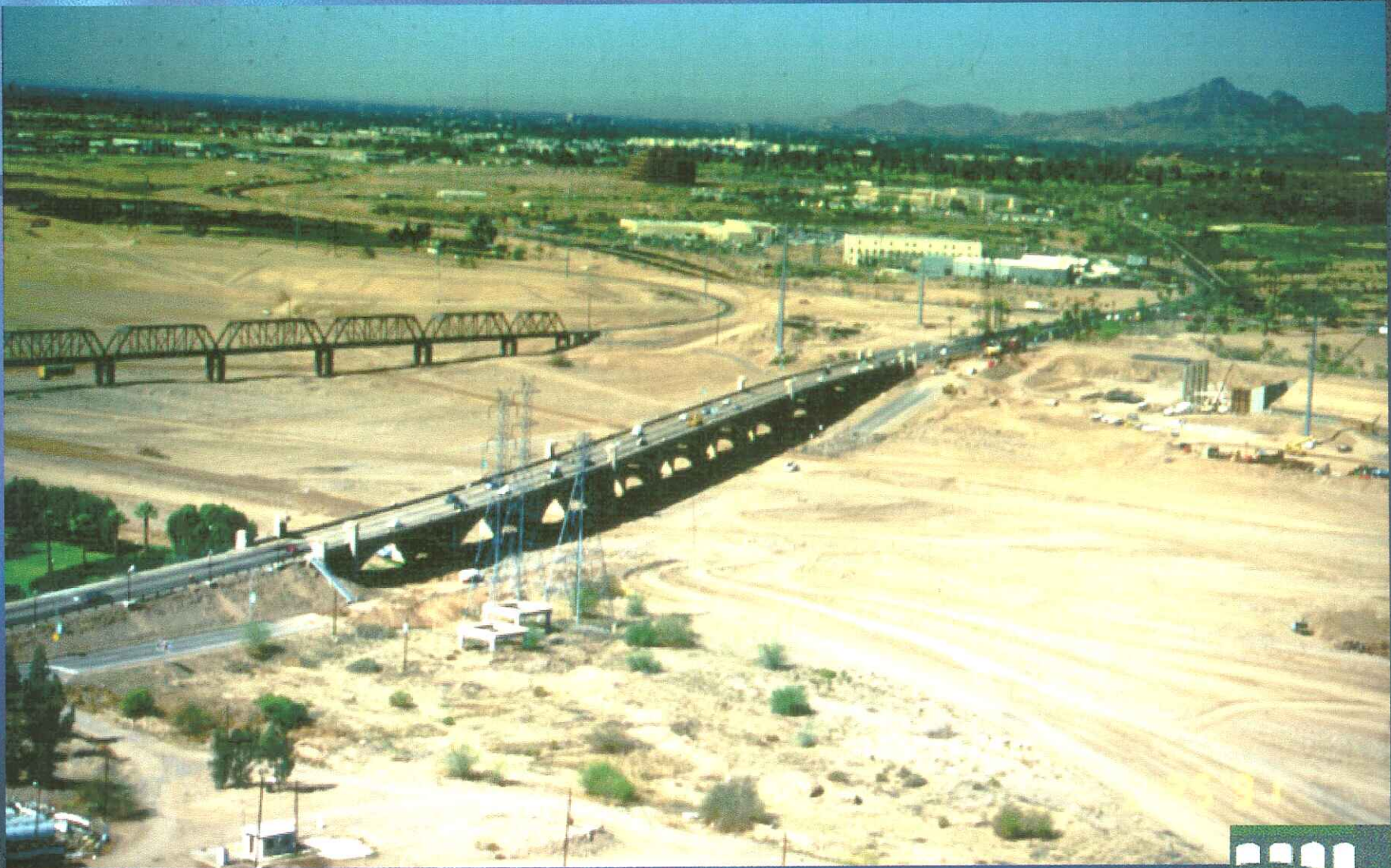
View looking south-east from air during flood in 1930's



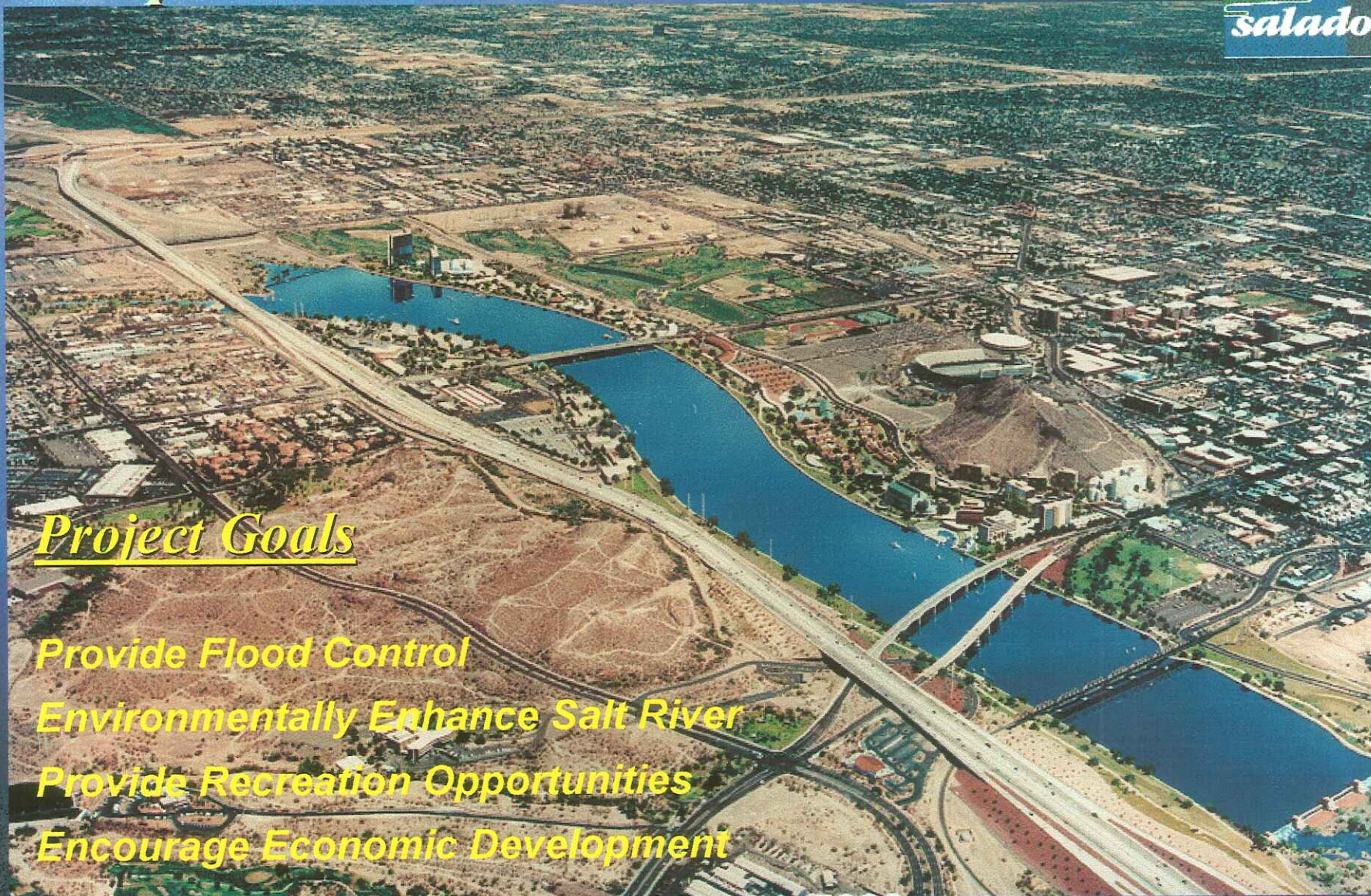
View looking north-west from air 1995.



View looking west from Rural Road prior to channelization in 1994

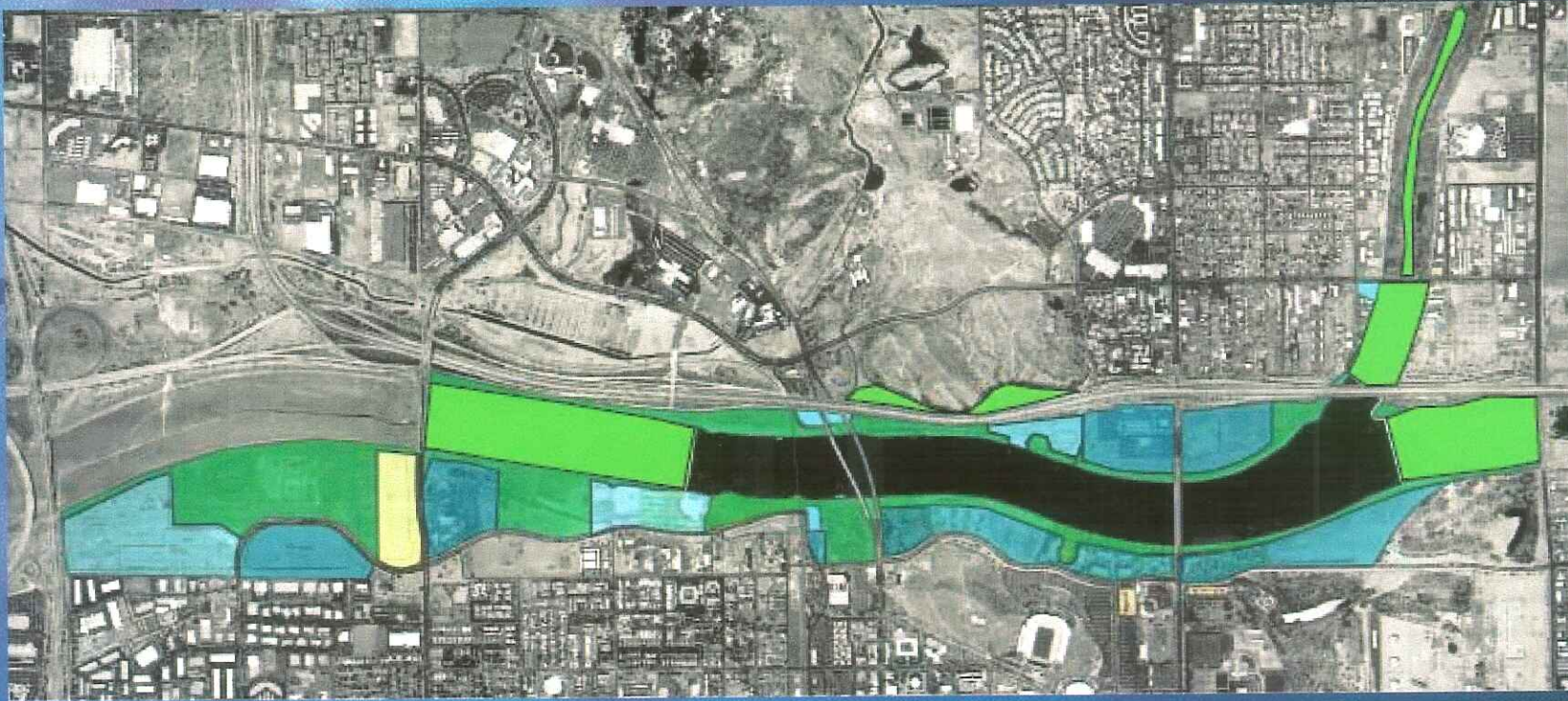


Tempe Town Lake on the Rio Salado

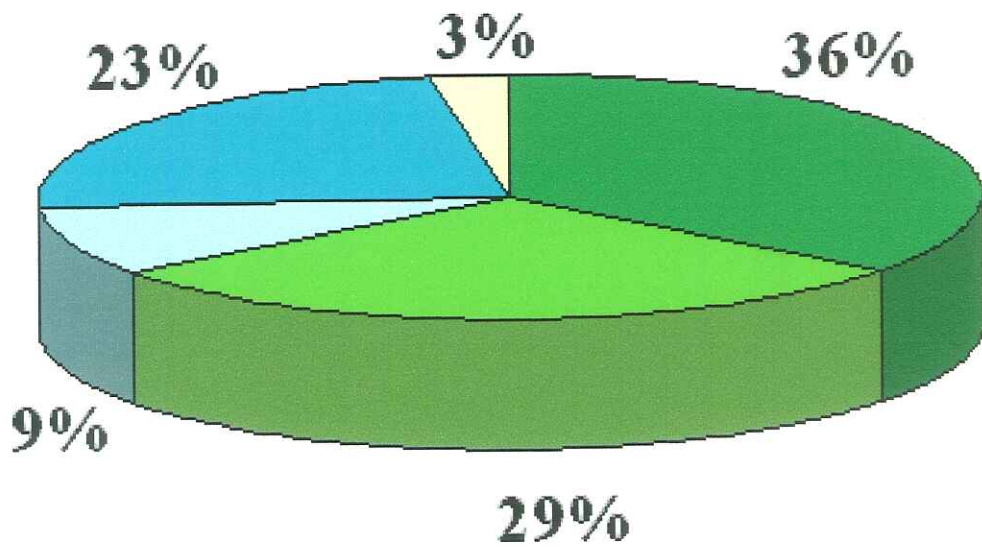


Project Goals

- Provide Flood Control*
- Environmentally Enhance Salt River*
- Provide Recreation Opportunities*
- Encourage Economic Development*



Rio Salado Project Land Use



- Parks / Open Space
- Habitat Restorations
- City Development
- Private Development
- Other





Rio Salado Tempe - Indian Bend Wash Reach



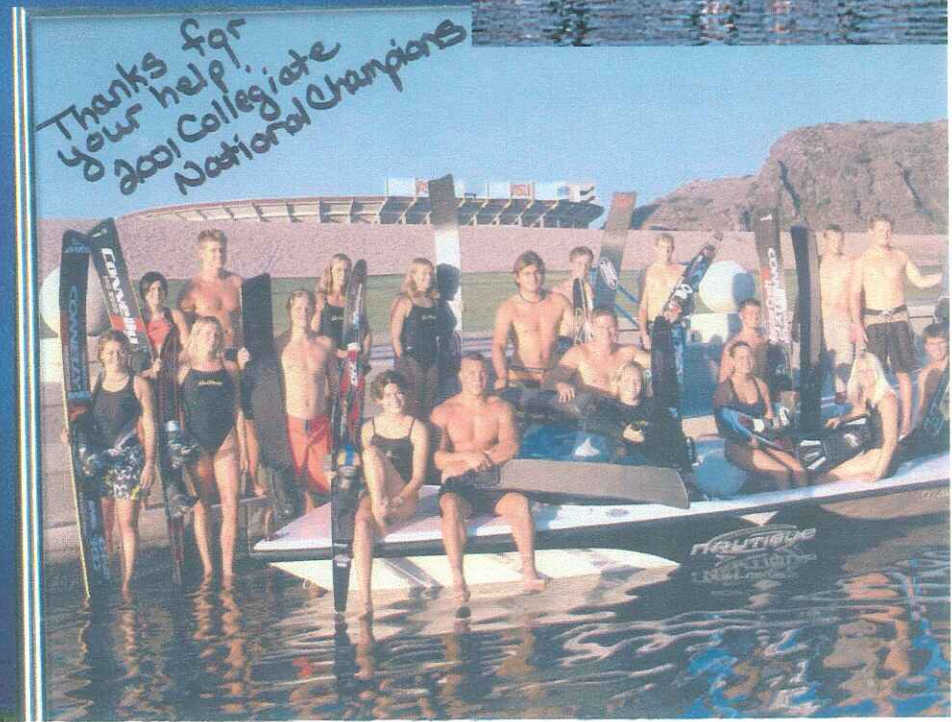
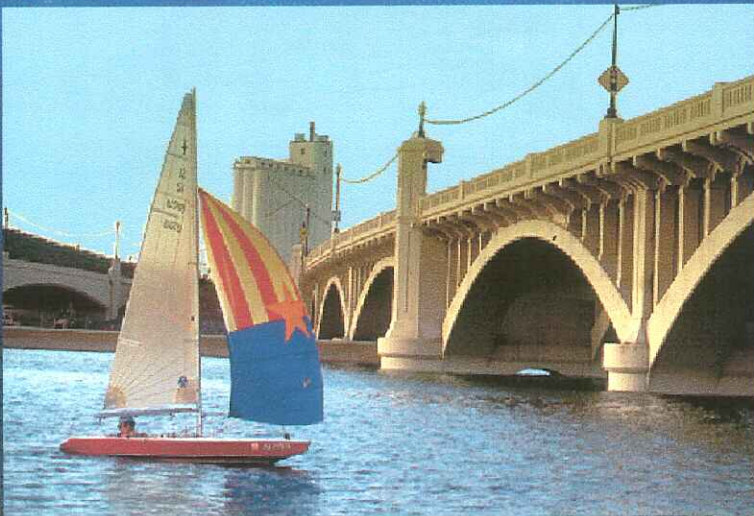
Army Corps Habitat Project



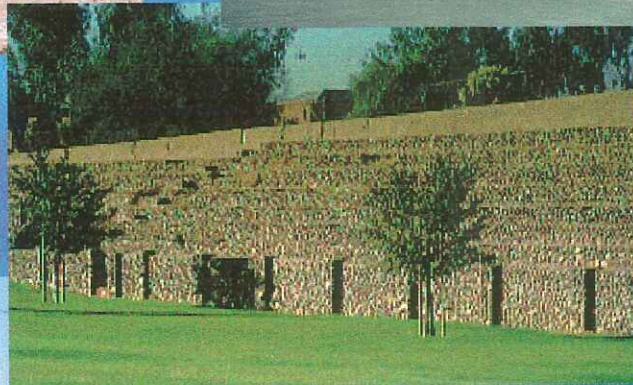
Lake Recreation



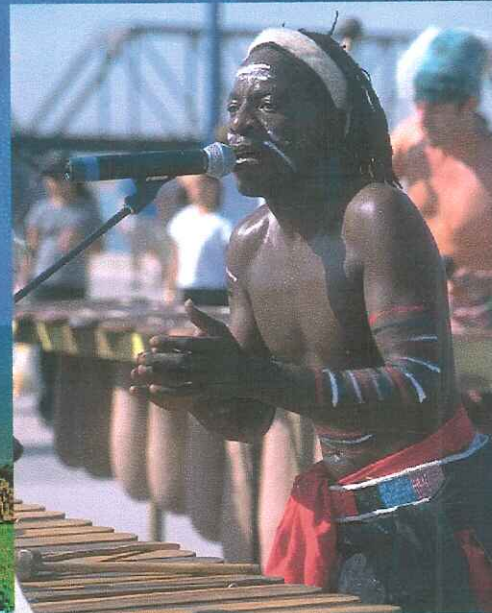
Lake Recreation



Park Features

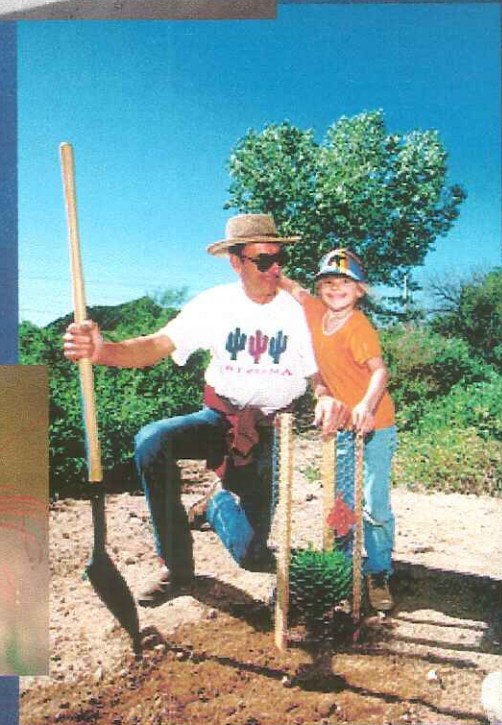


Park Activities & Events



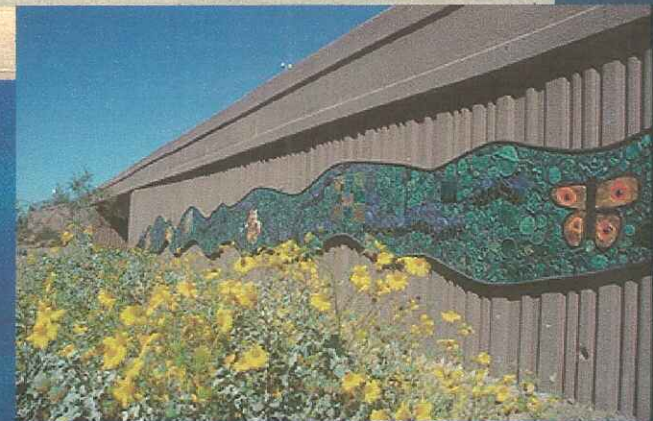
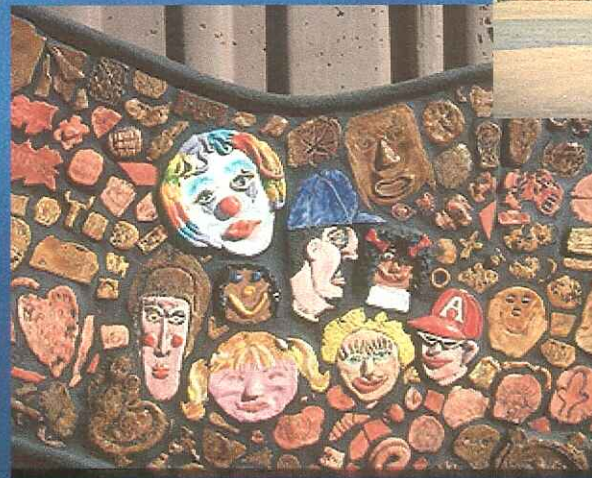


Environment





Public Art

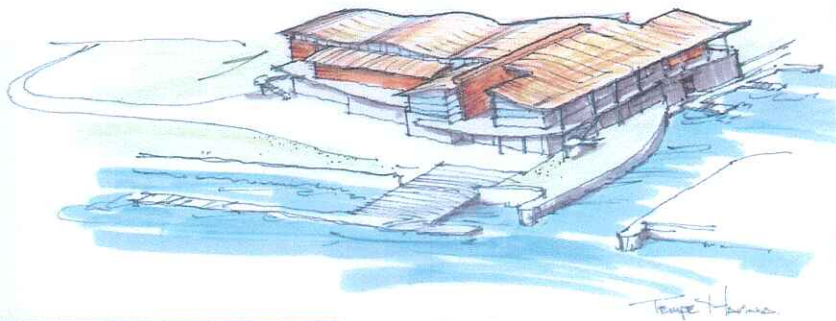




Public Building Projects



Rio Salado Marina
ON TOWN LAKE

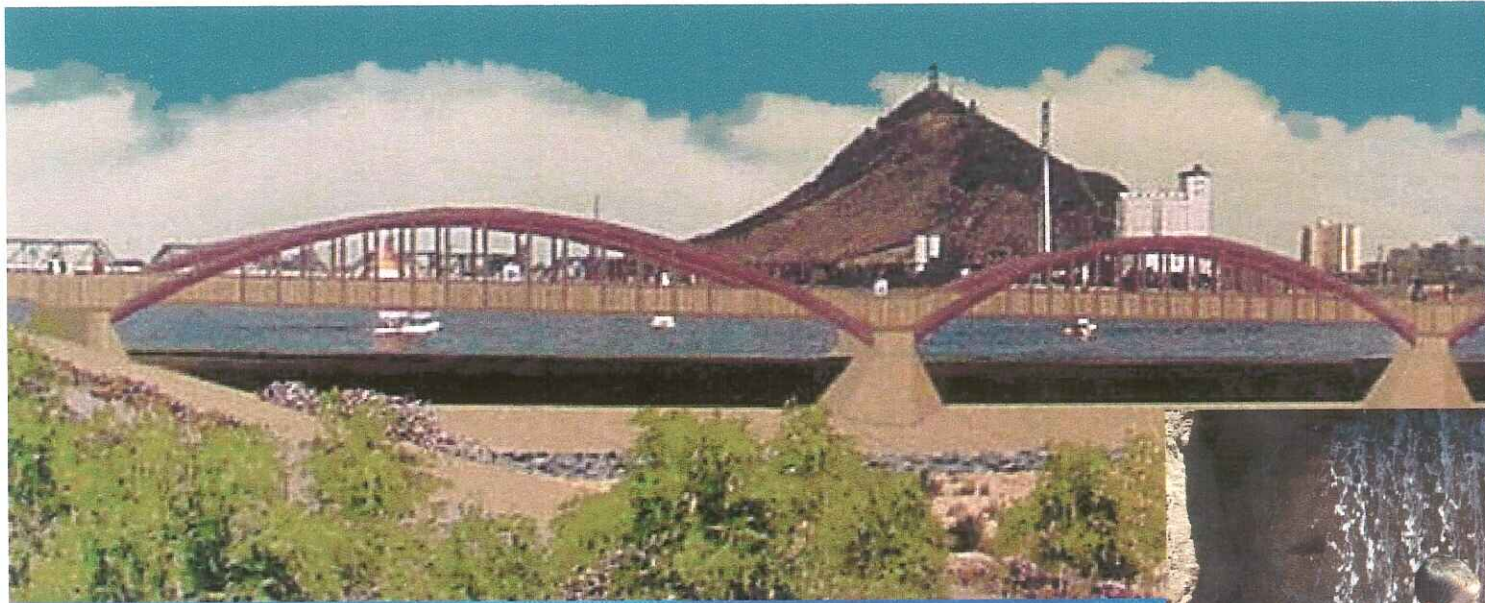




TETRAE

CENTER FOR THE ARTS

ARCHITECTON — Barton Myers Associates, Inc.



Partnerships

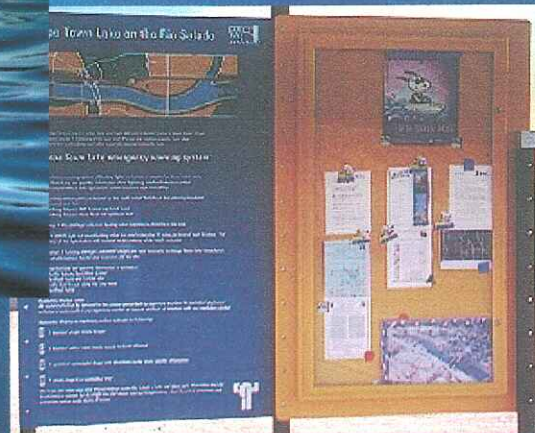


- AZ Department of Environmental Quality
- AZ Dept. of Transportation
- AZ Dept of Water Resources
- AZ Game and Fish Dept.
- AZ Office of Tourism
- AZ State Historic Preservation Office
- AZ State Land Department
- AZ State Parks
- AZ State University
- AZ Yacht Club
- Bass Angler's Sportsman Society
- Bureau of Land Management
- City of Phoenix
- City of Mesa
- Central AZ Paddlers Association
- Flood Control District of Maricopa County
- Salt River Project
- Central Arizona Project
- ┌ Friends of Rio Salado
- ┌ Greater Phoenix Economic Council
- ┌ Maricopa Association of Governments
- ┌ Papago Salado Association
- ┌ Regional Public Transit Authority
- ┌ Rio Salado Advisory Commission
- ┌ Rio Salado Enhanced Services Commission
- ┌ Rio Salado Rowing Club
- ┌ Rio Salado Town Lake Foundation
- ┌ Salt River Pima Maricopa Community
- ┌ Tempe Arts Commission
- ┌ U.S. Army Corps of Engineers
- ┌ U.S. Department of Agriculture
- U.S. Environmental Protection Agency
- U.S. Fish and Wildlife Services
- Voyages Unbound
- Valley Partnership

Project Stewardship



- Water Quality
- Public Safety
- Dams
- Park Maintenance
- Public Relations
- Events
- Emergency Response



Public Project Investment 1985-2007



<i>Channelization</i>	<i>\$ 41,000,000</i>
<i>Town Lake Construction</i>	<i>\$ 50,500,000</i>
<i>Art in the Park Projects</i>	<i>\$ 500,000</i>
<i>Tempe Beach Park</i>	<i>\$ 5,800,000</i>
<i>Splash Playground</i>	<i>\$ 1,700,000</i>
<i>Town Lake Marina</i>	<i>\$ 6,500,000</i>
<i>Linear Park System</i>	<i>\$ 16,500,000</i>
<i>Mill Avenue Bridges</i>	<i>\$ 10,700,000</i>
<i>Pedestrian Bridge</i>	<i>\$ 2,750,000</i>
<i>Performing Arts Center</i>	<i>\$ 65,000,000</i>
<i>Boathouse Project</i>	<i>\$ 3,500,000</i>
<i>Street Improvements</i>	<i>\$ 37,500,000</i>
<i>Utility Improvements</i>	<i>\$ 7,000,000</i>
<i>Land Purchases</i>	<i>\$ 20,000,000</i>
<i>Habitat Projects</i>	<i>\$ 8,500,000</i>
<i>Operational Costs</i>	<i>\$ 32,000,000</i>
<i>Financing Costs</i>	<i>\$20,000,000</i>
TOTAL	OVER \$ 325,000,000.00

Hayden Ferry Lakeside & Hayden Ferry South



kitchen sink studio
www.kitchen-sink-studio.com