

SALMON, LEWIS & WELDON, P.L.C.

Attorneys at Law

Riney B. Salmon II, P.C.
John B. Weldon, Jr.
Lisa M. McKnight
James R. Huntwork
Richard N. Morrison
Kristin D. Magin

2850 E. Camelback Road, Suite 200
Phoenix, Arizona 85016
Telephone 602-801-9060
Facsimile 602-801-9070

M. Byron Lewis
Stephen E. Crofton
Mark A. McGinnis
Karen S. Gaylord
Ronnie P. Hawks

Writer's Direct Line
602-801-9066

Writer's Internet Address
mam@slwplc.com

April 24, 2003

RECEIVED
APR 24 2003
SLW

Hand-delivered

Mr. George Mehnert
Arizona Navigable Stream Adjudication Commission
1700 West Washington, Room 304
Phoenix, AZ 85007

Re: In re Determination of Navigability of Lower Salt River

Dear George:

Enclosed are one set of slides and one set of color paper copies made from those slides. As you will recall, these are the slides used during Dr. Schumm's testimony and admitted as part of the evidence at the hearing.

If you have any questions or need additional copies, please call me.

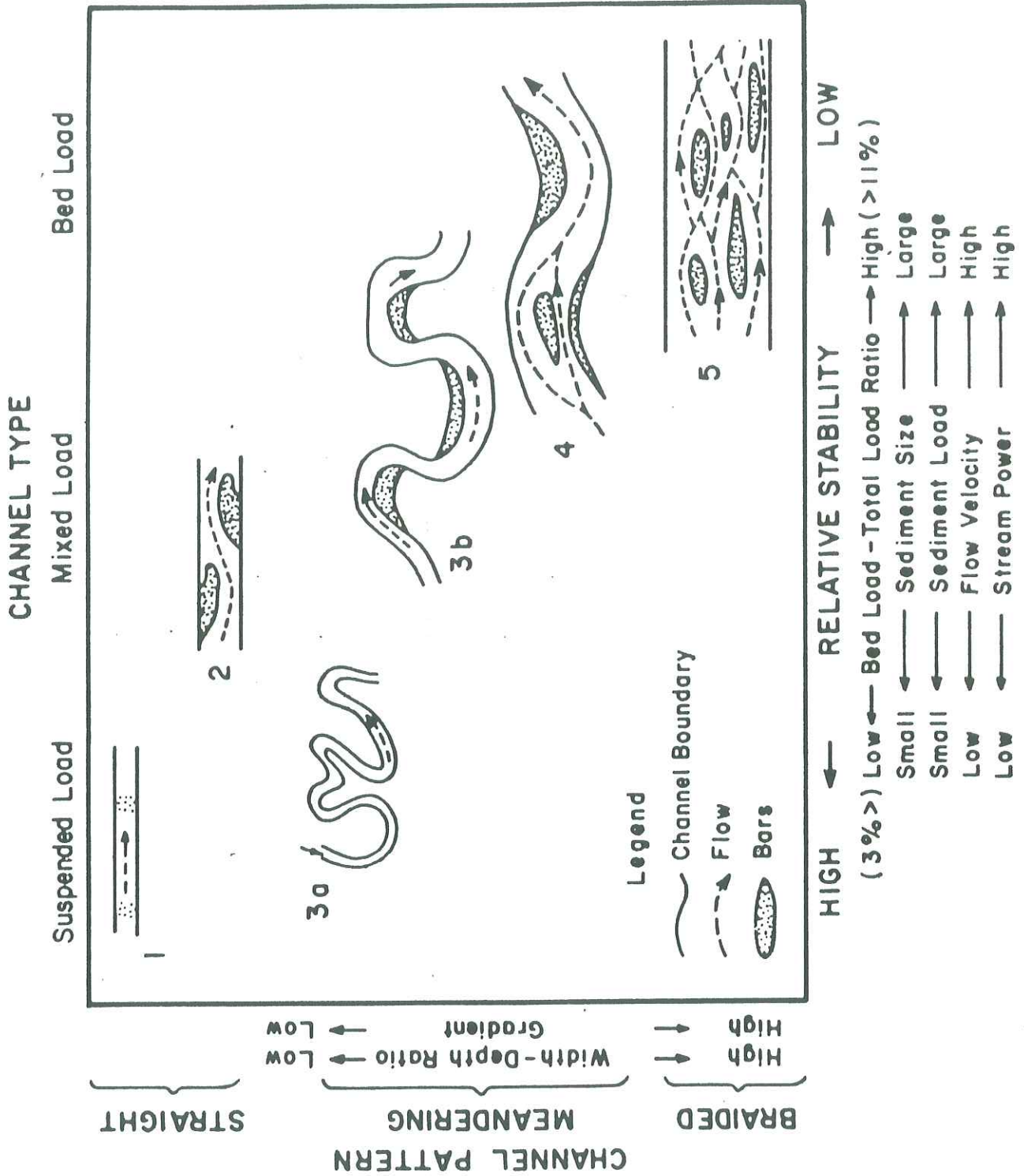
Very truly yours,

Salmon, Lewis & Weldon, P.L.C.

By 
Mark A. McGinnis

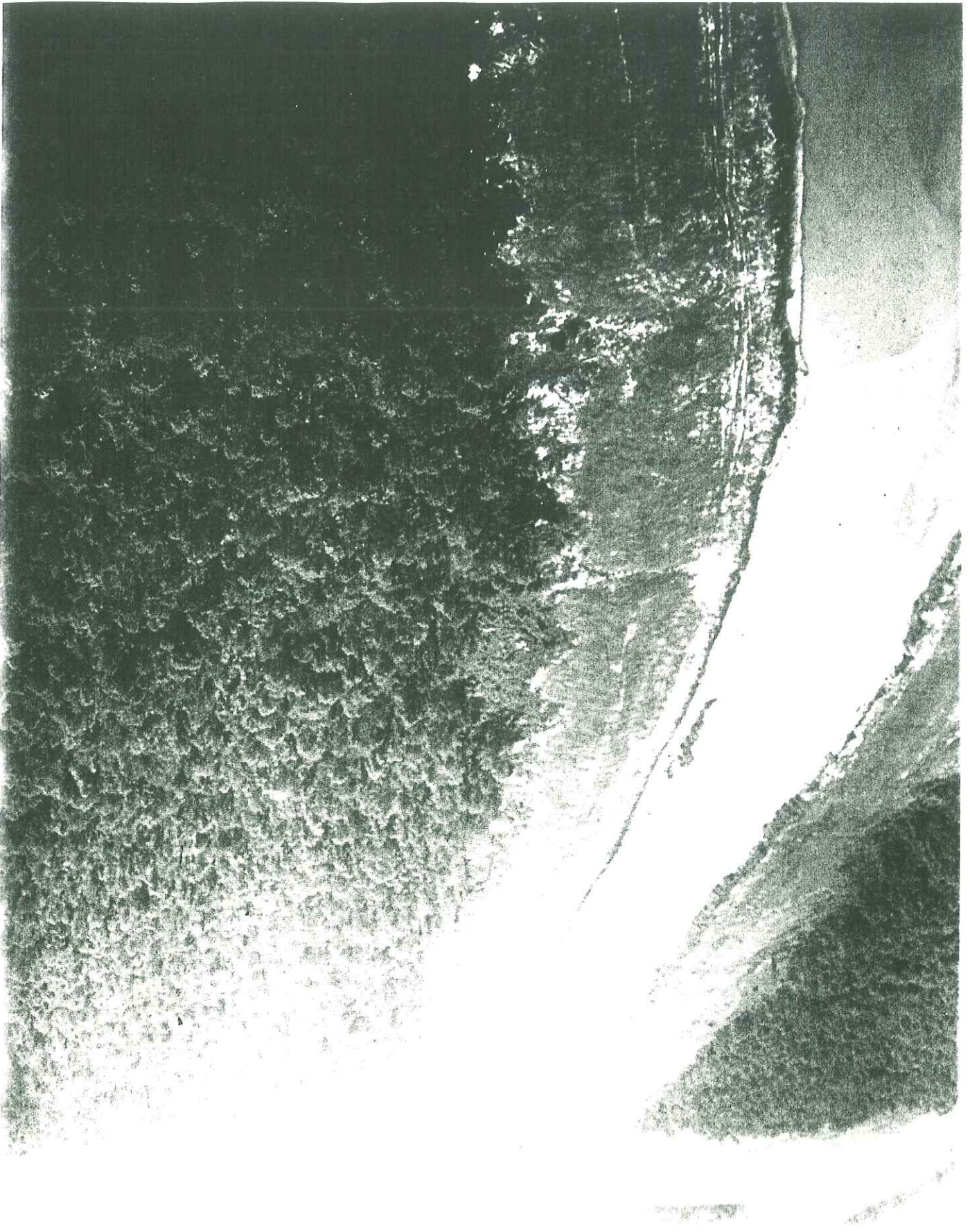
Encls.

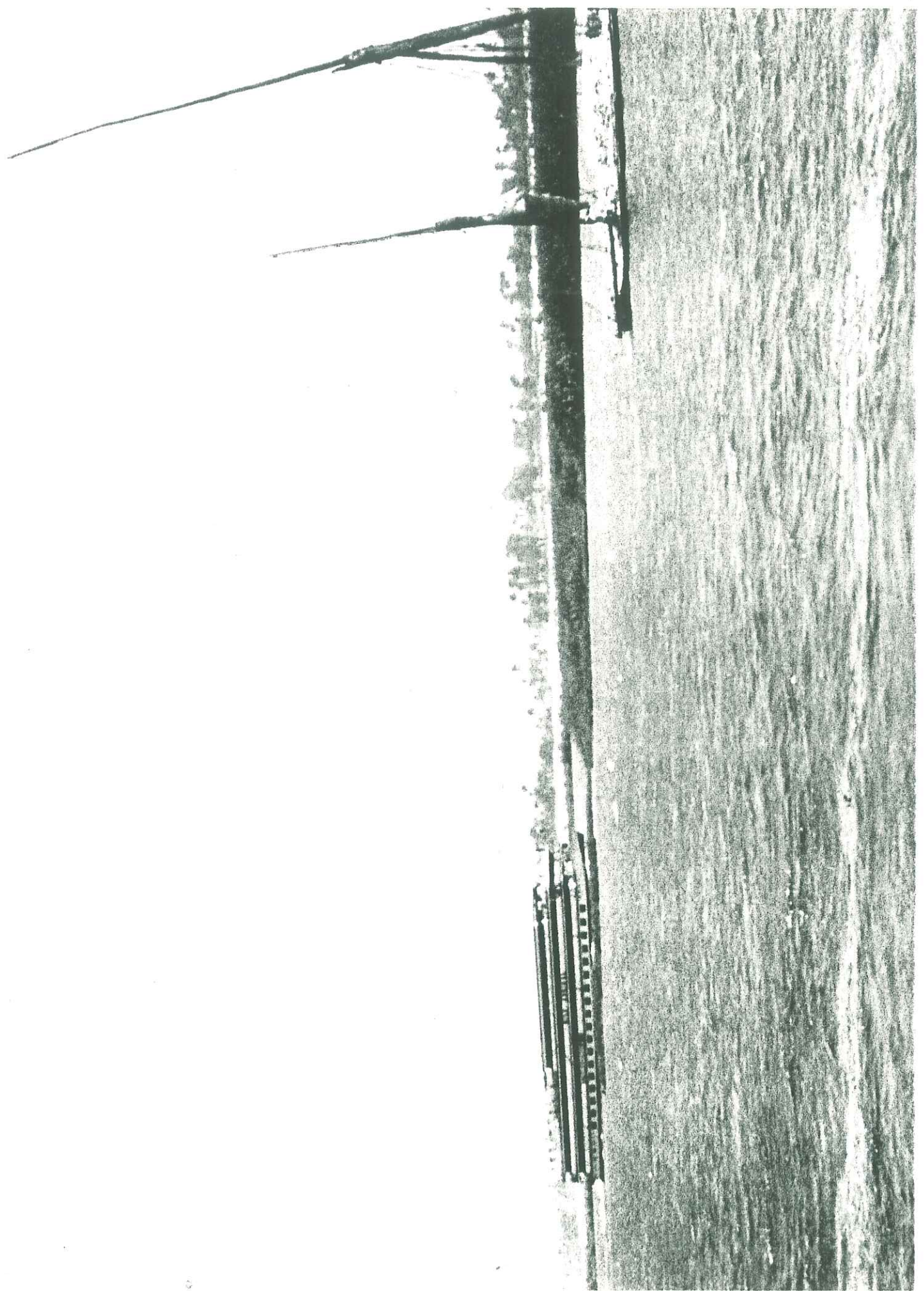
cc: David C. Roberts (w/ encls.)
Frederic L. Beeson (w/ encls.)

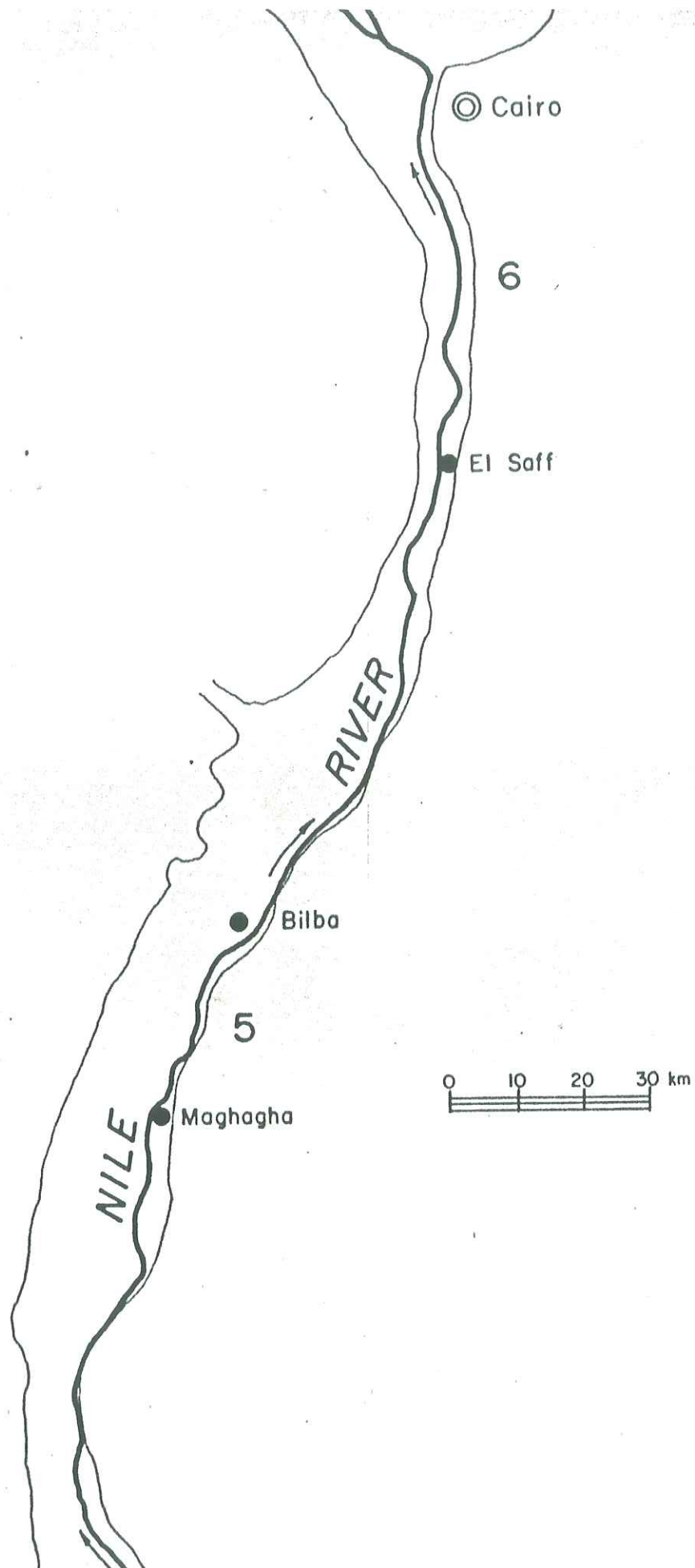


LOW → RELATIVE STABILITY ← HIGH

Channel Shift Meander Shift Meander Shift Alternate Bar
Chute Cutoff Neck Cutoff Shift Avulsion









GREENVILLE REACH

1933 & 1972

2



33°34'

91°10'

Dike

91°10'

33°20'

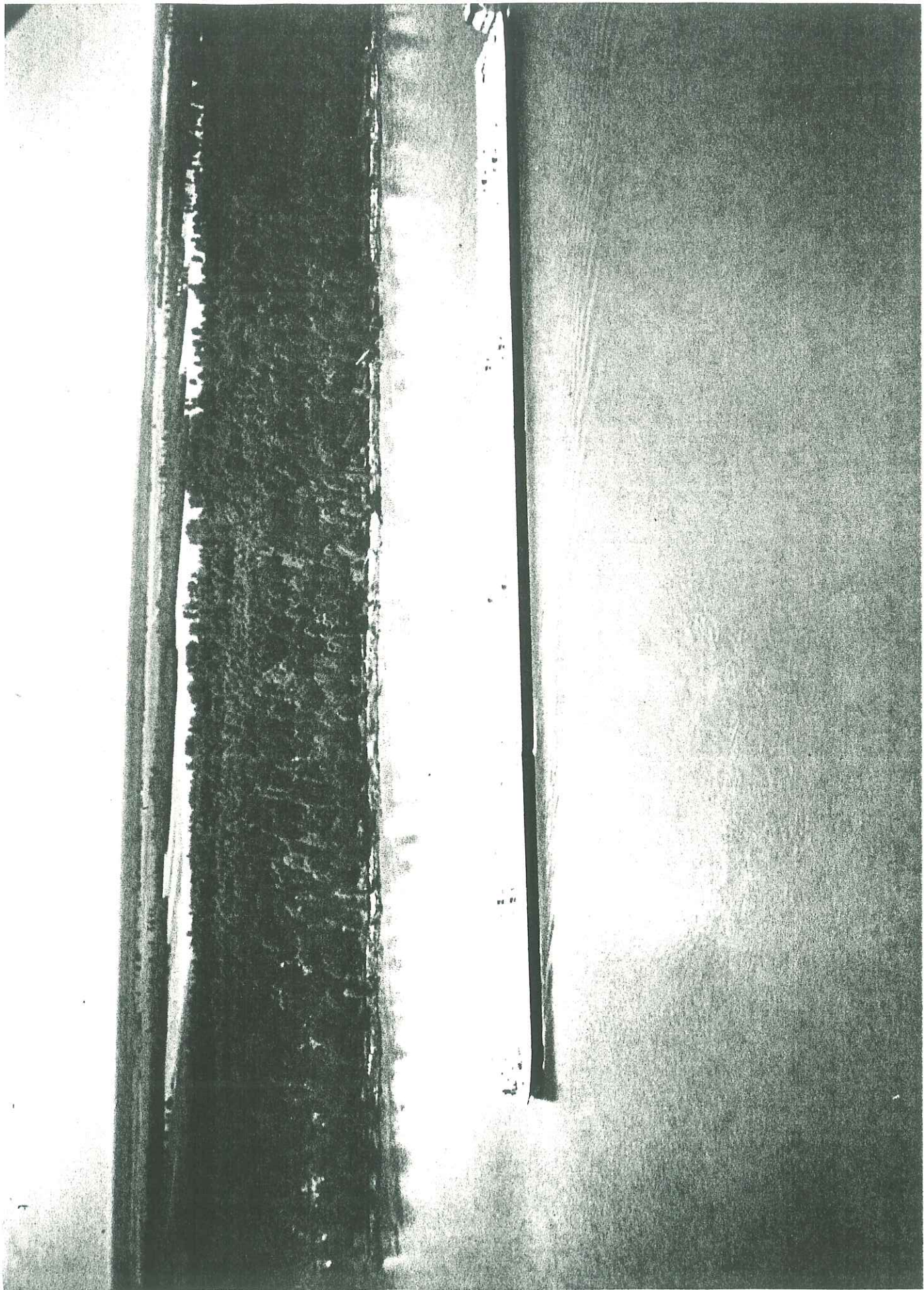
33°20'

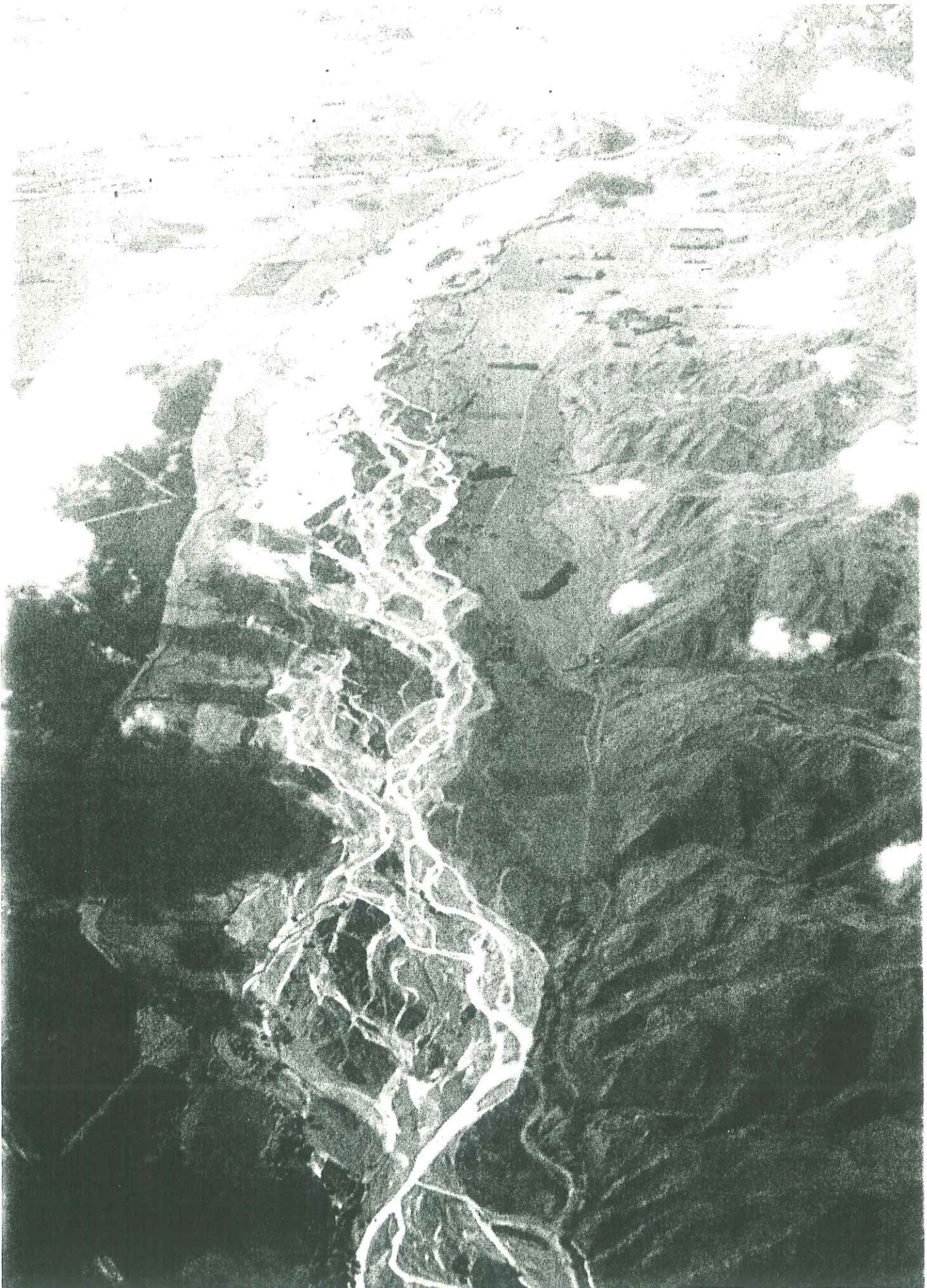
91°10'

Dike

33°20'

GEND
FT ALWP
30 FT ALWP
30 FT
TMENTS & DIKES





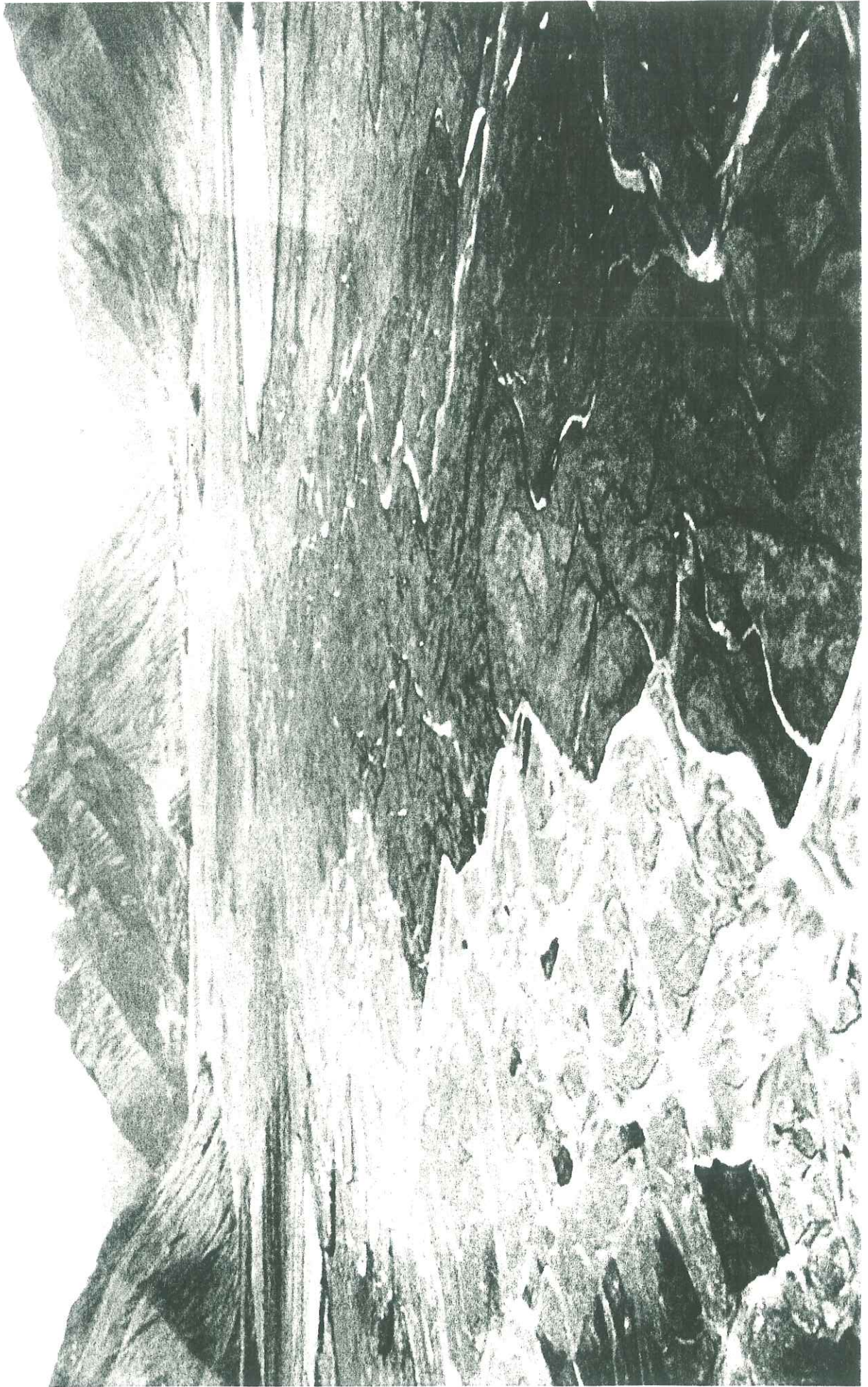


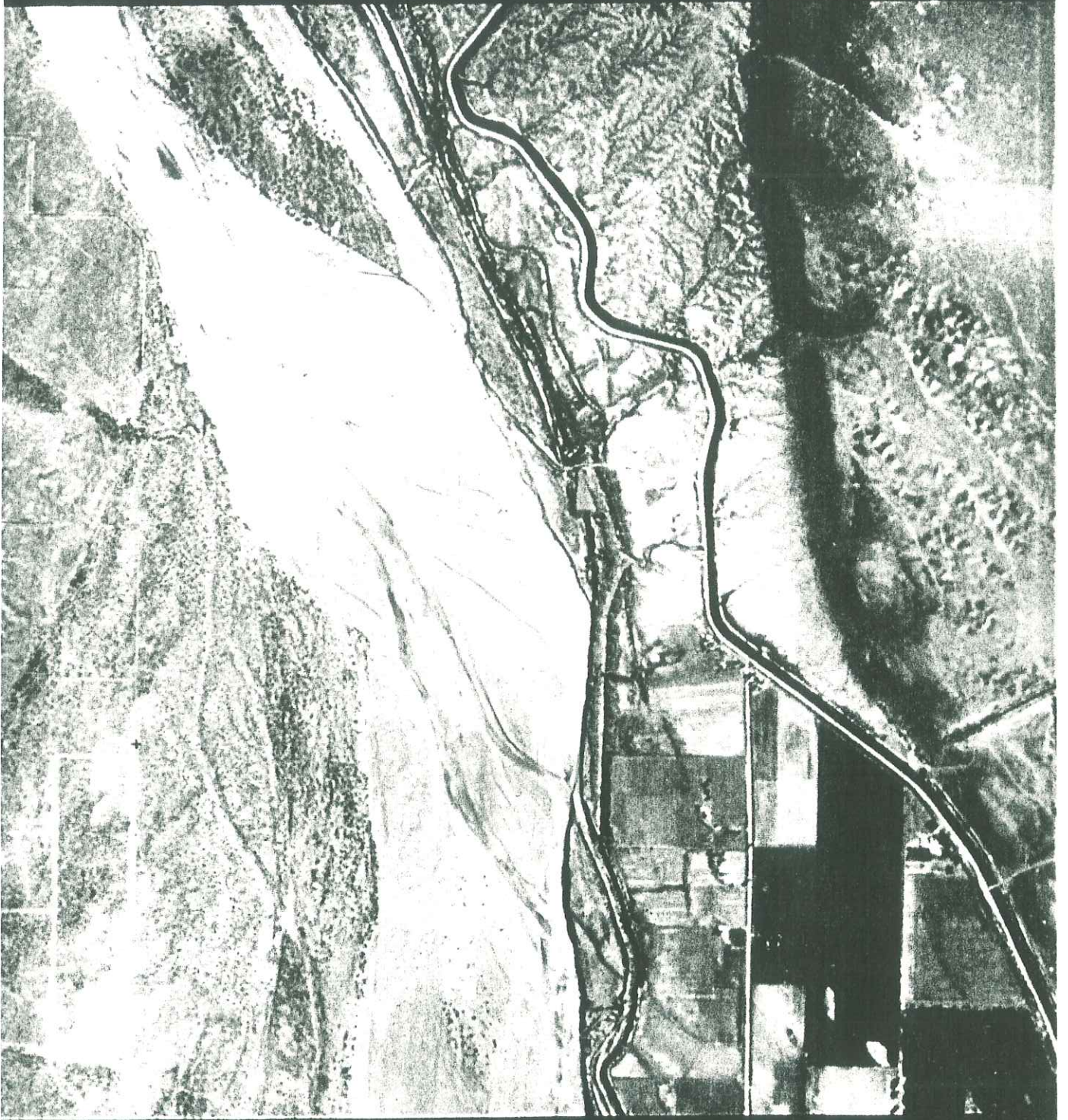


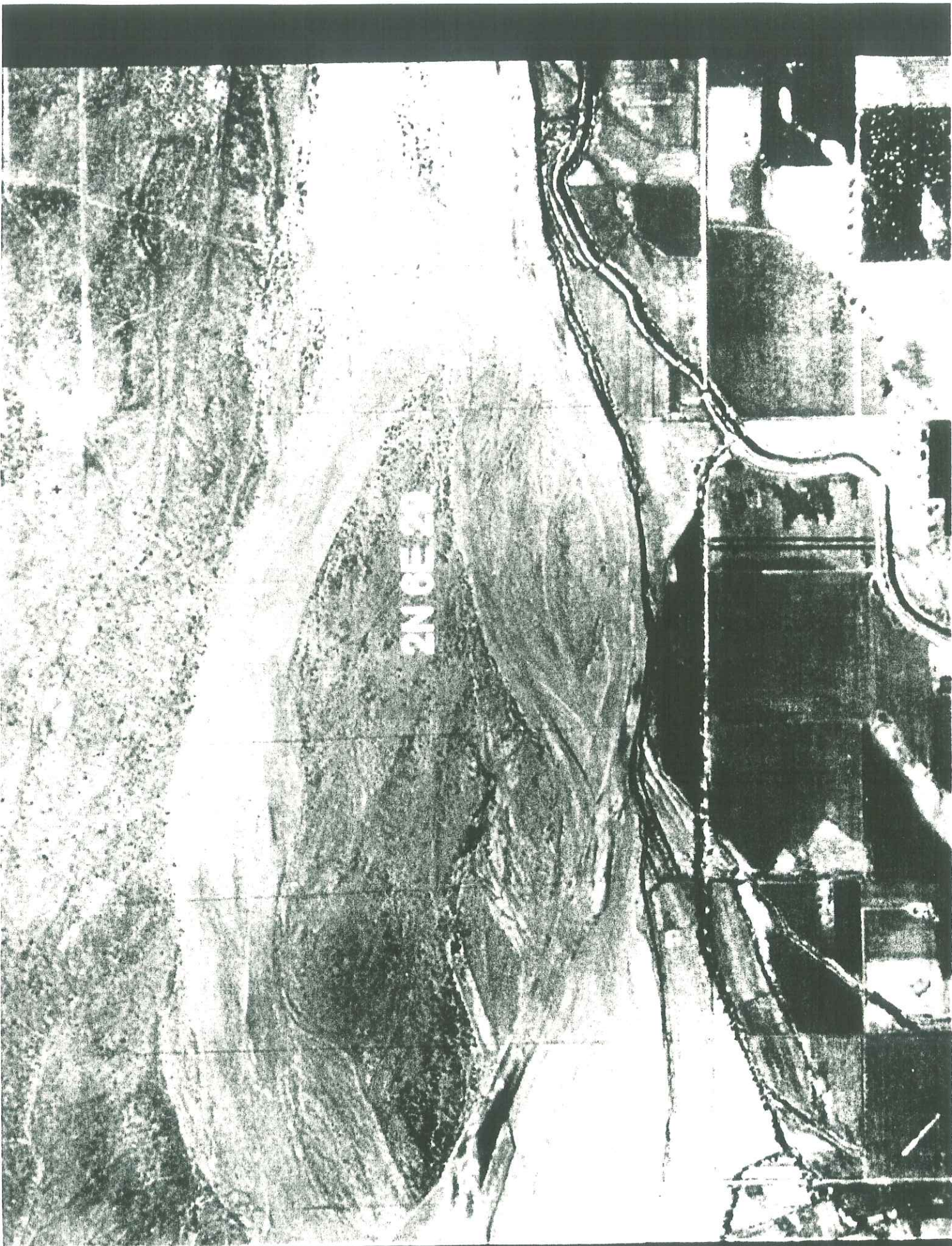


PLATE TWENTY-SEVEN











27 30 N

2077
2078



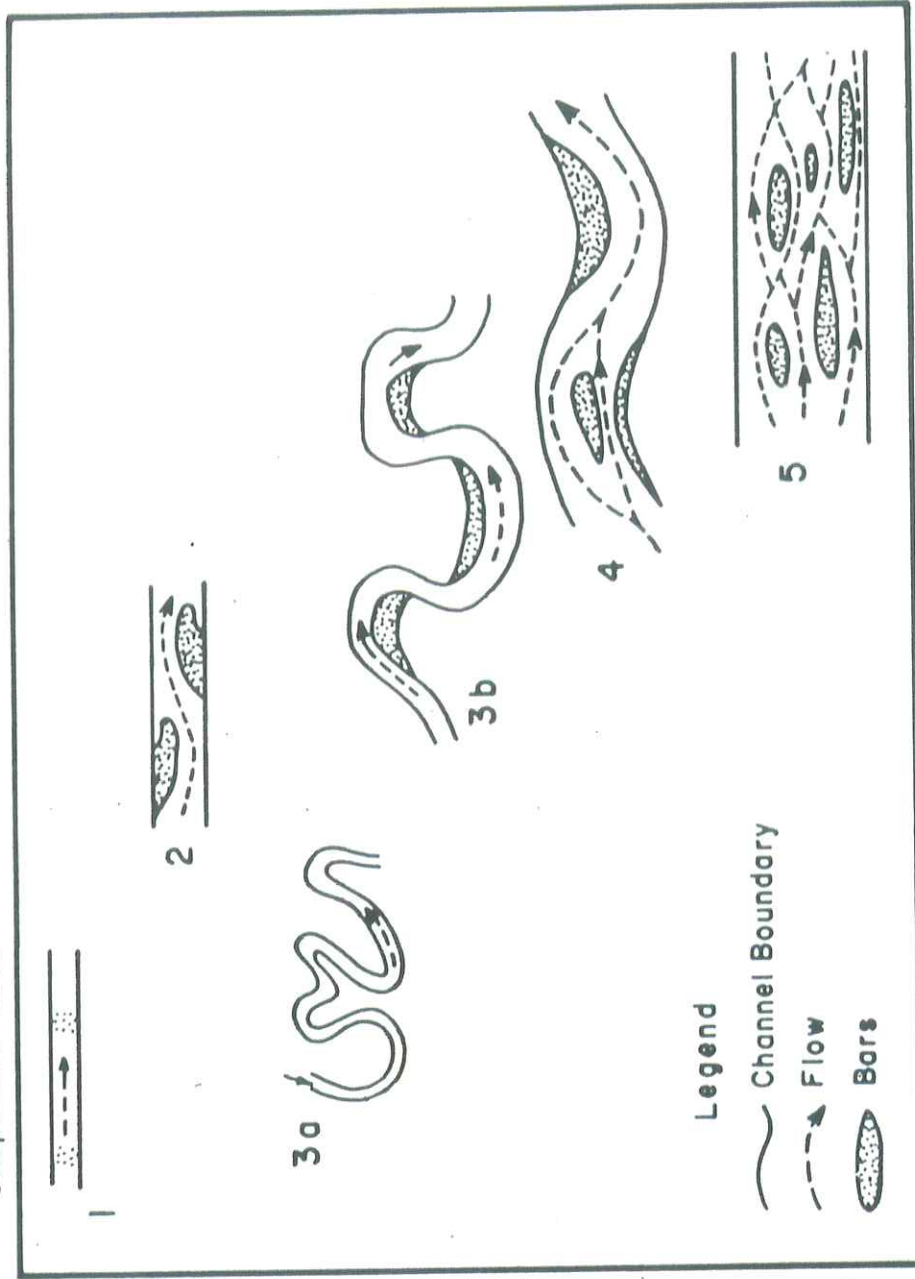
12





CHANNEL TYPE

Suspended Load Mixed Load Bed Load



LOW → RELATIVE STABILITY ← HIGH

Channel Shift Meander Shift Meander Shift Alternate Bar
Chute Cutoff Neck Cutoff Shift Avulsion

CHANNEL PATTERN

STRAIGHT MEANDERING BRAIDED

High → High → High →

Width-Depth Ratio → Low Low

Width-Gradient → Low Low

RELATIVE STABILITY HIGH ← → LOW

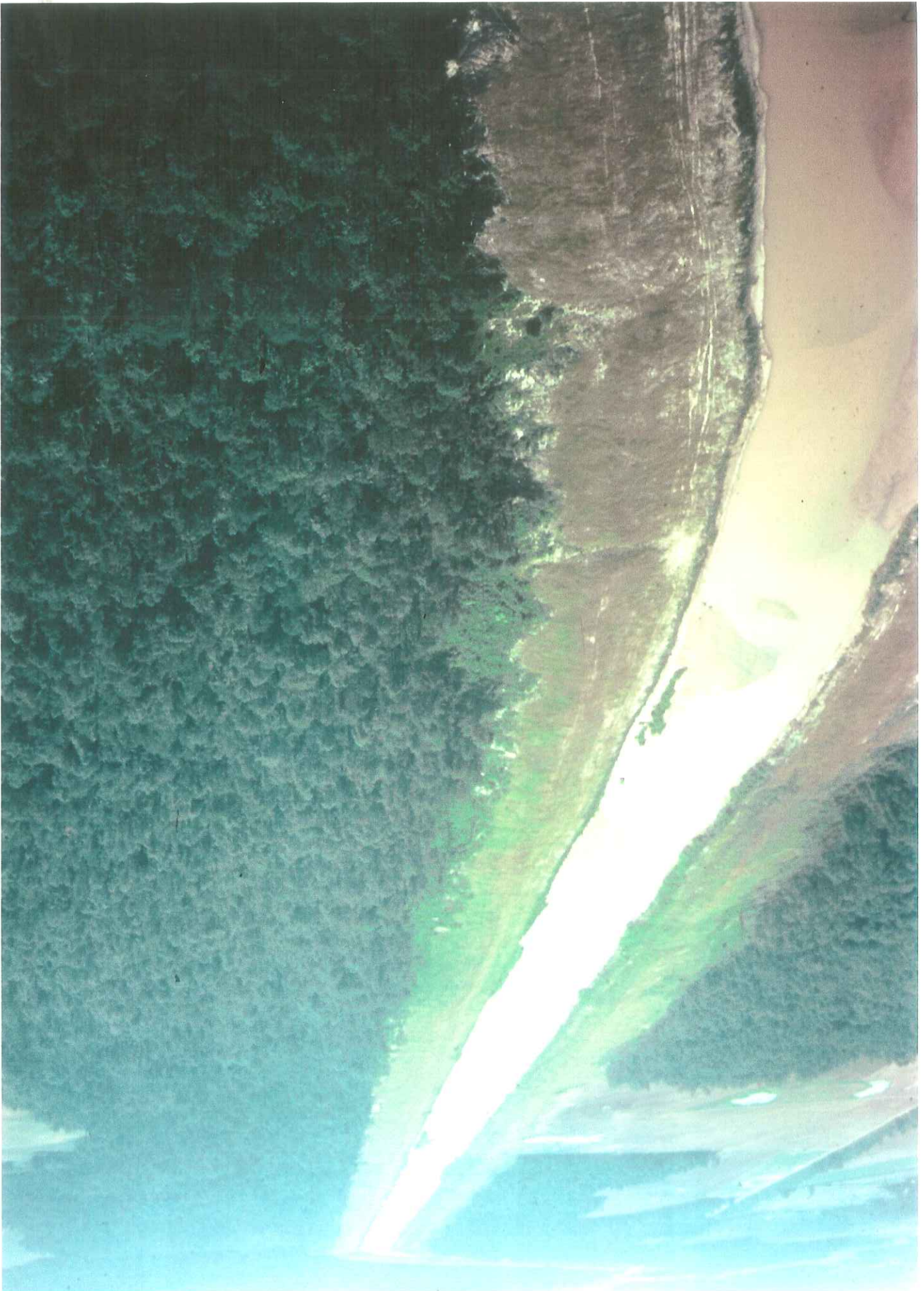
(3% >) Low ← Bed Load - Total Load Ratio → High (> 11%)

Small ← Sediment Size → Large

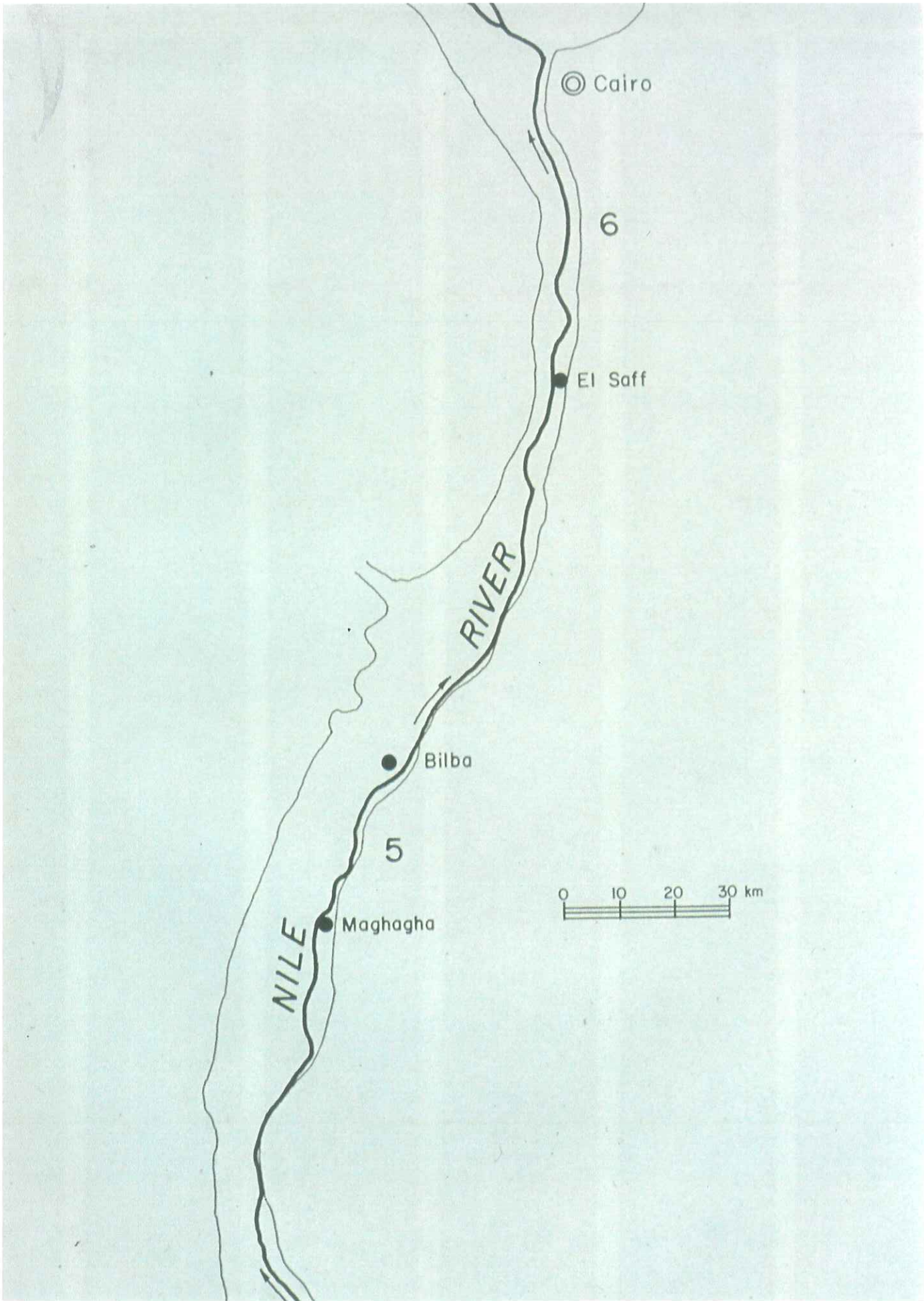
Small ← Sediment Load → Large

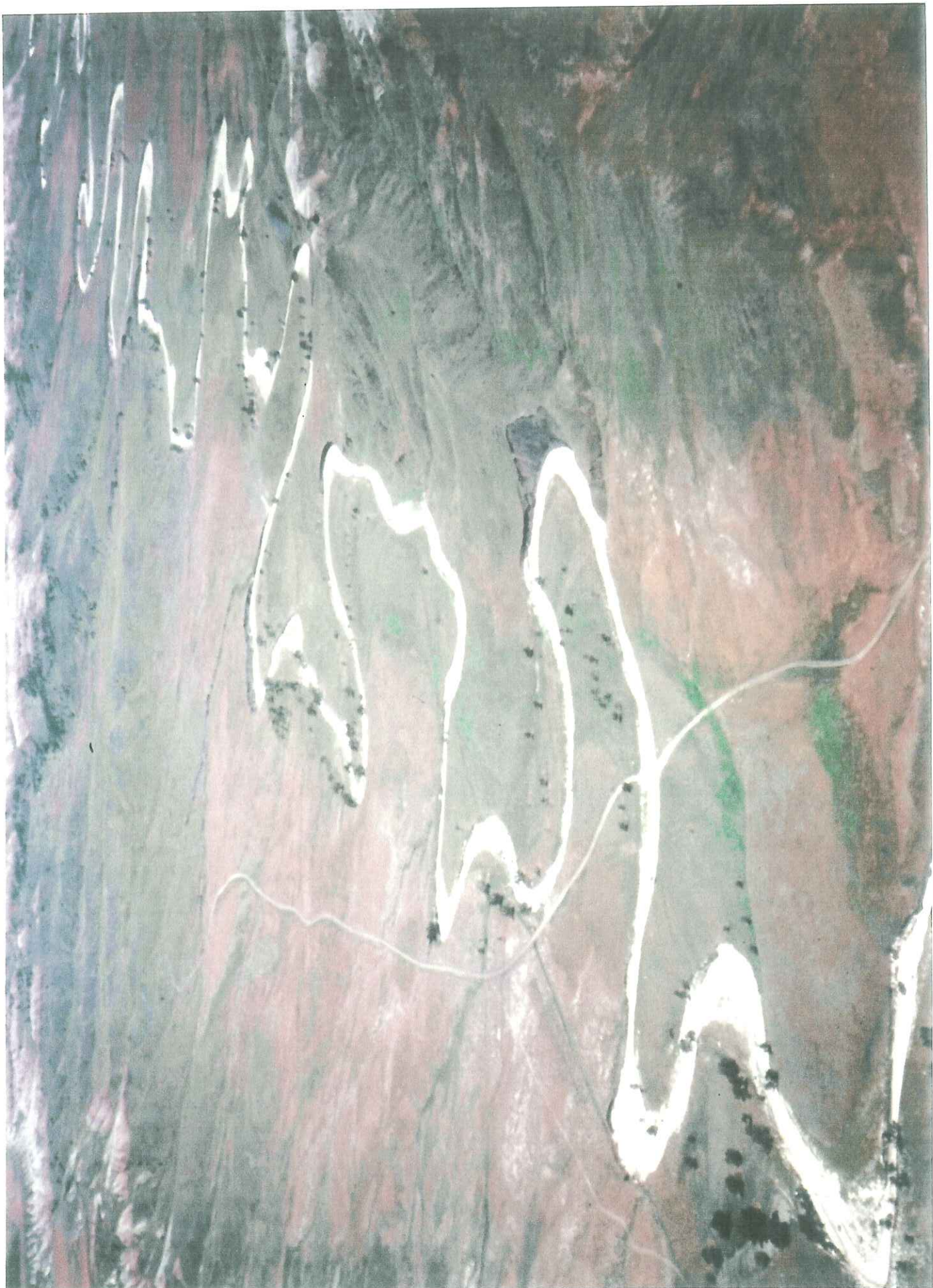
Low ← Flow Velocity → High

Low ← Stream Power → High





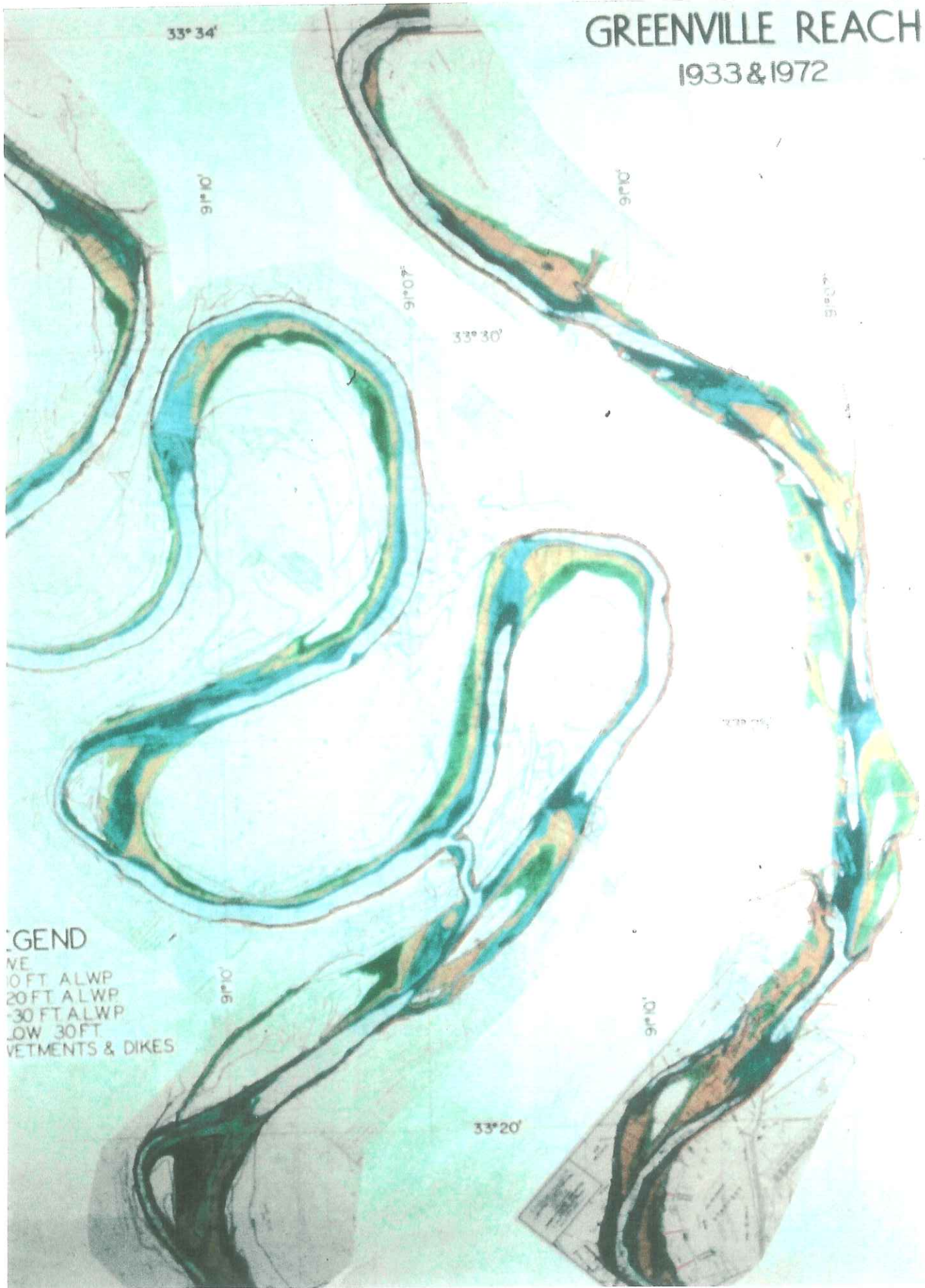




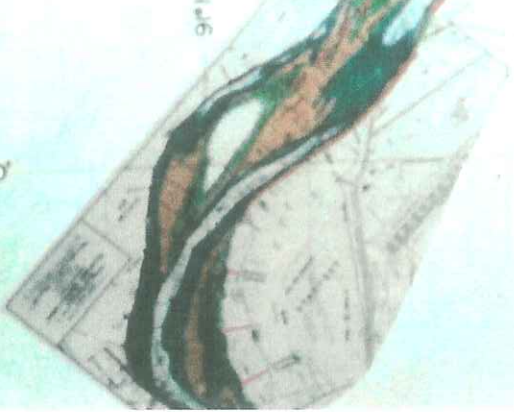
GREENVILLE REACH

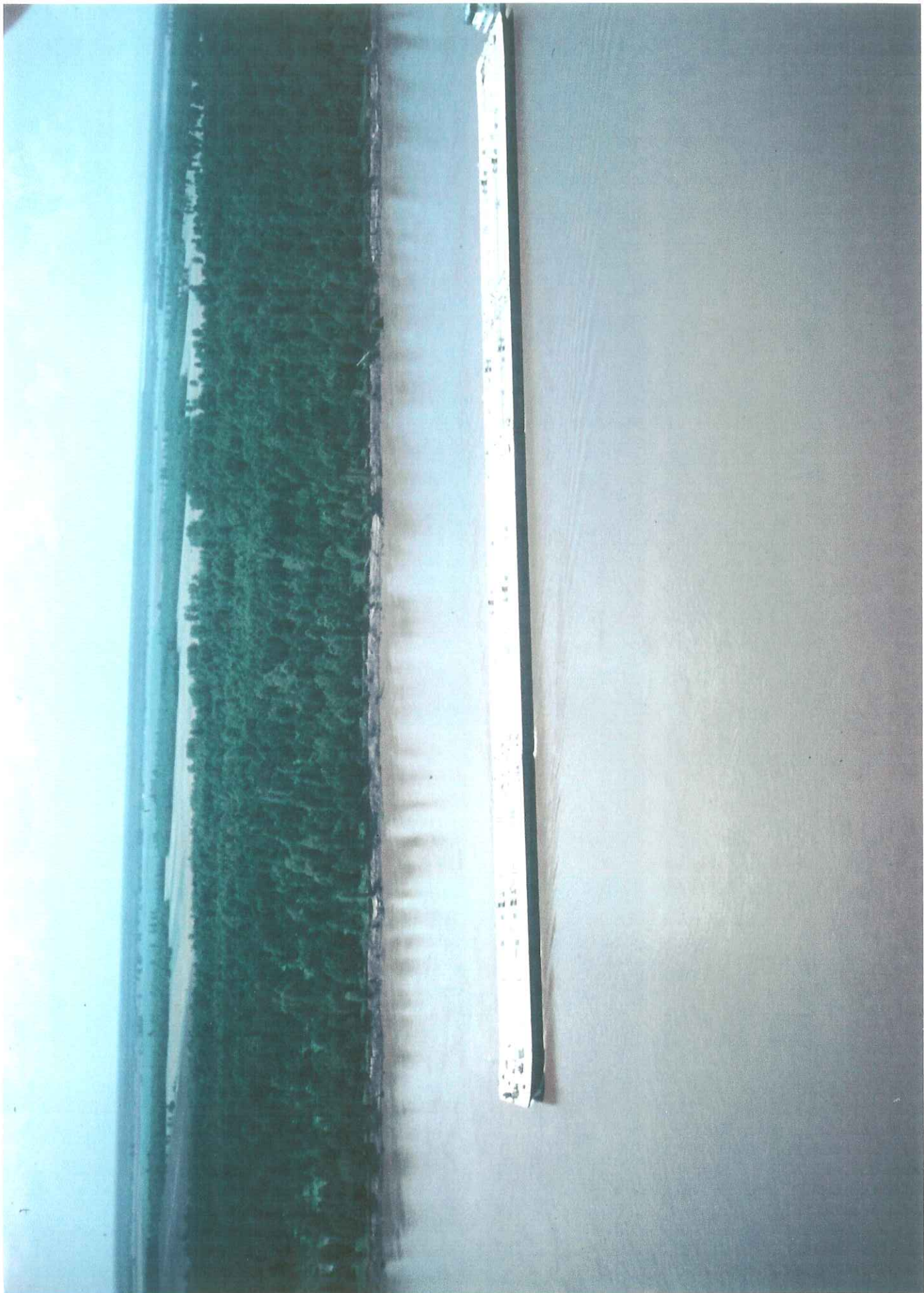
1933 & 1972

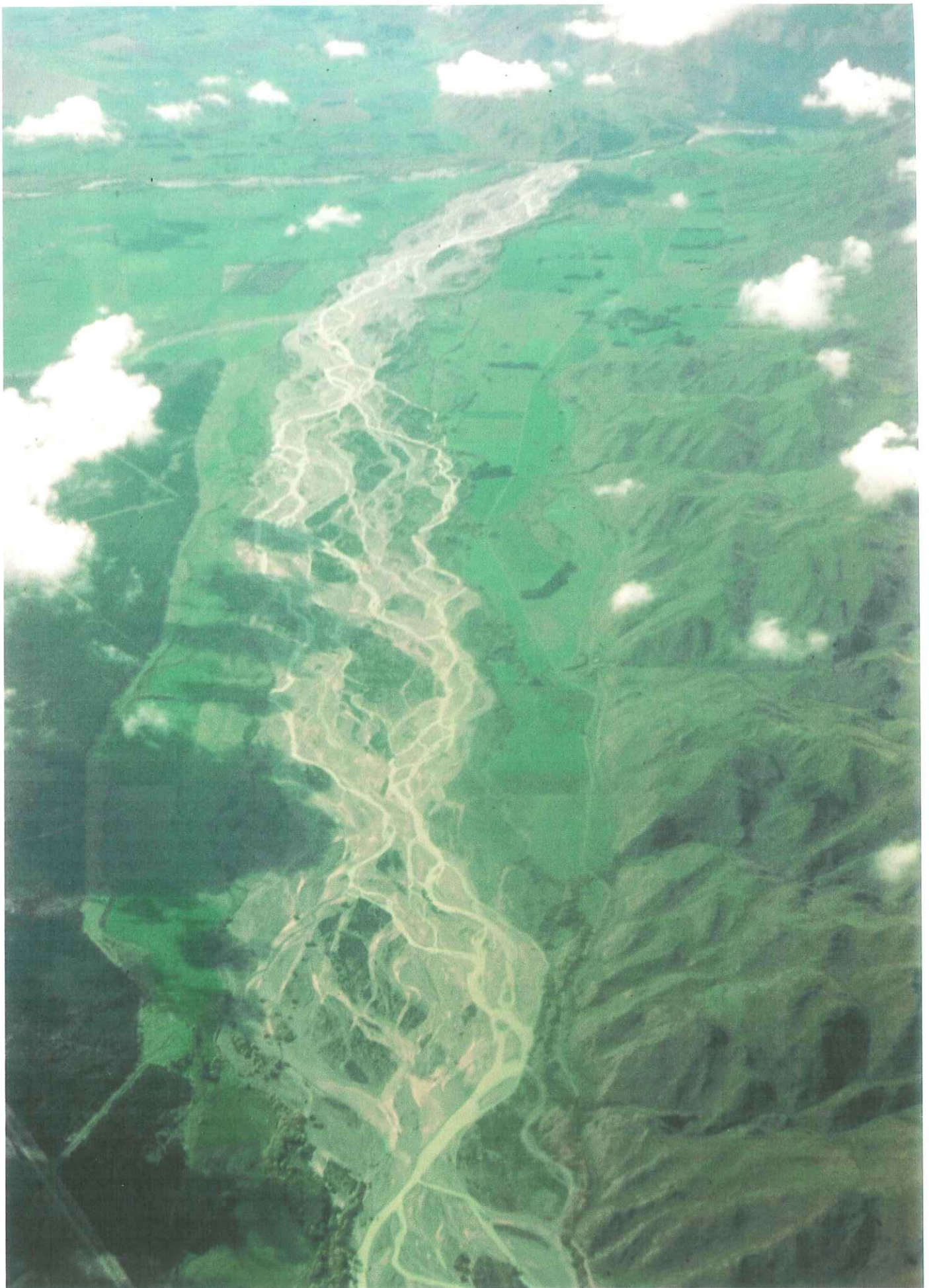
6



LEGEND
NE
10 FT ALWP
20 FT ALWP
30 FT ALWP
LOW 30 FT
SETTLEMENTS & DIKES









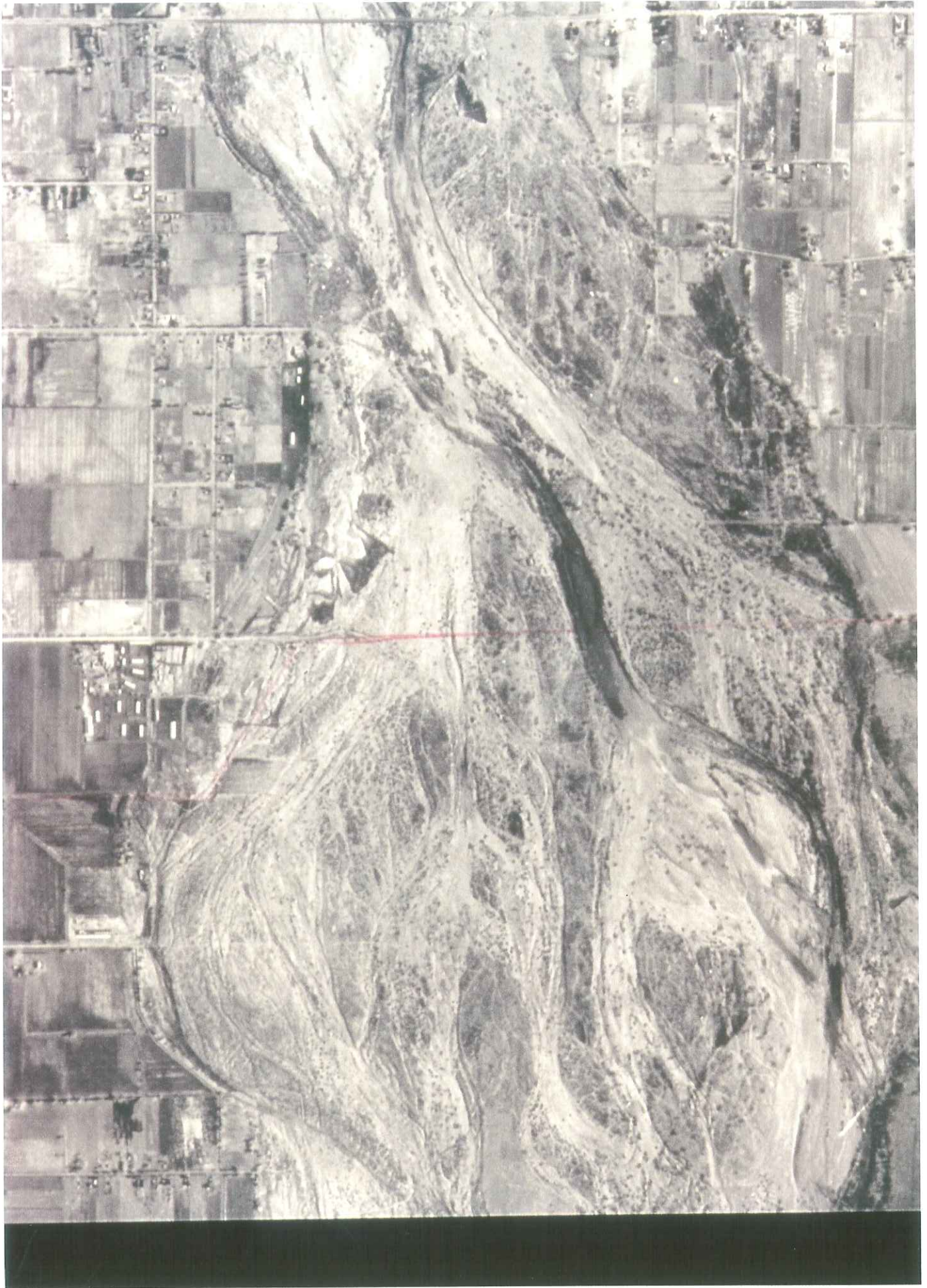


1N 1E 32

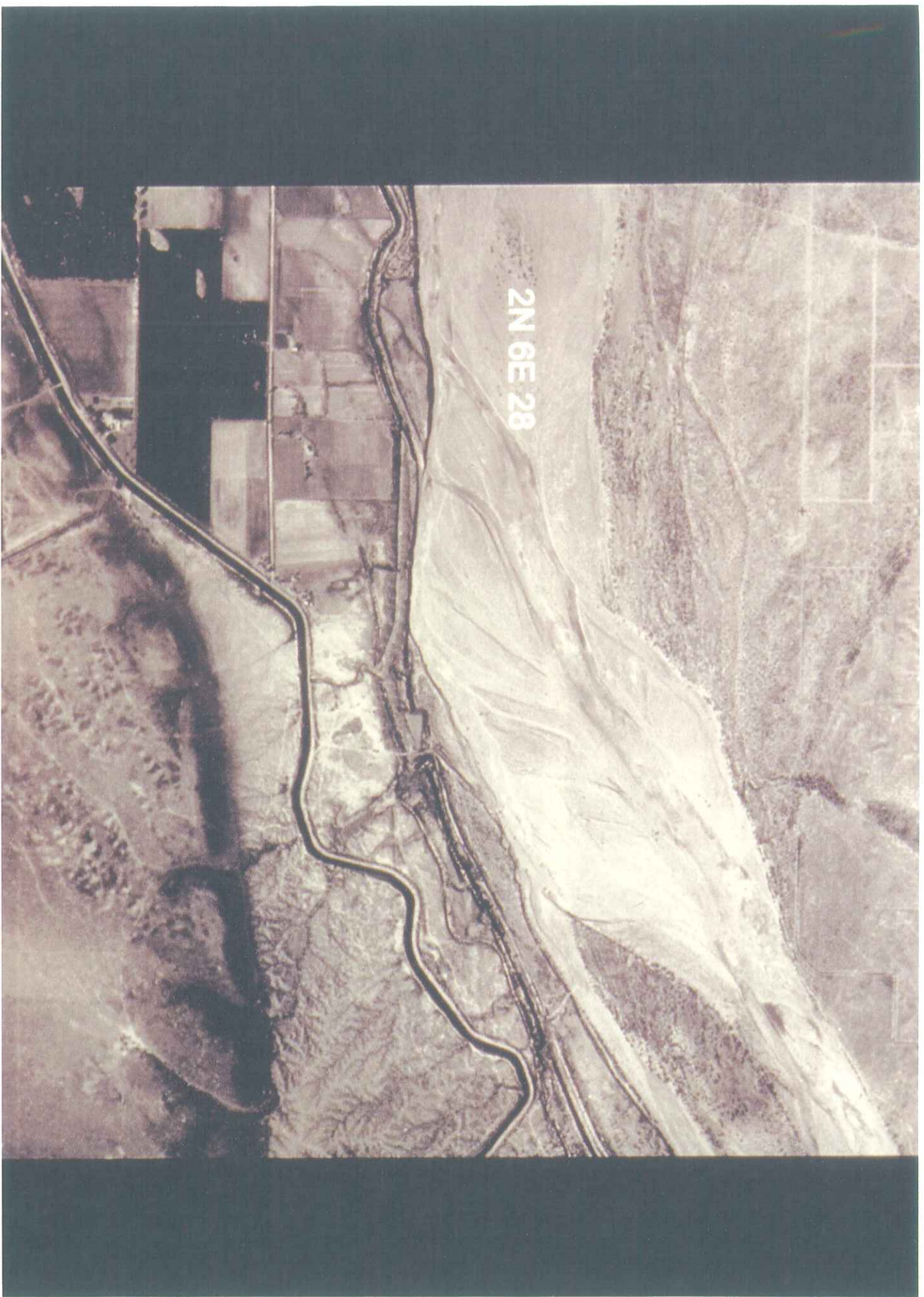
1S 1E 05



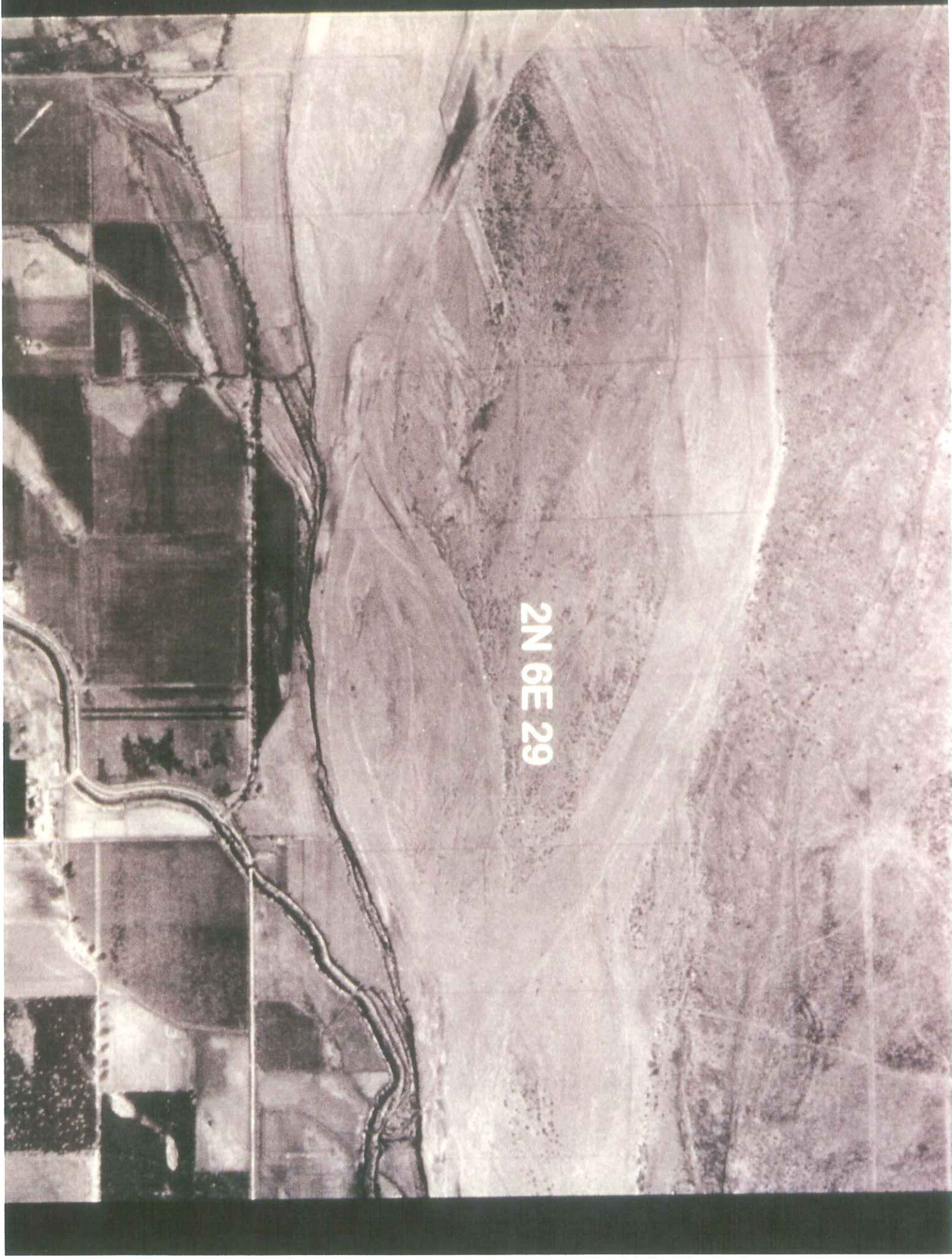
PLATE TWENTY-SEVEN







2N 6E 28



2N 6E 29



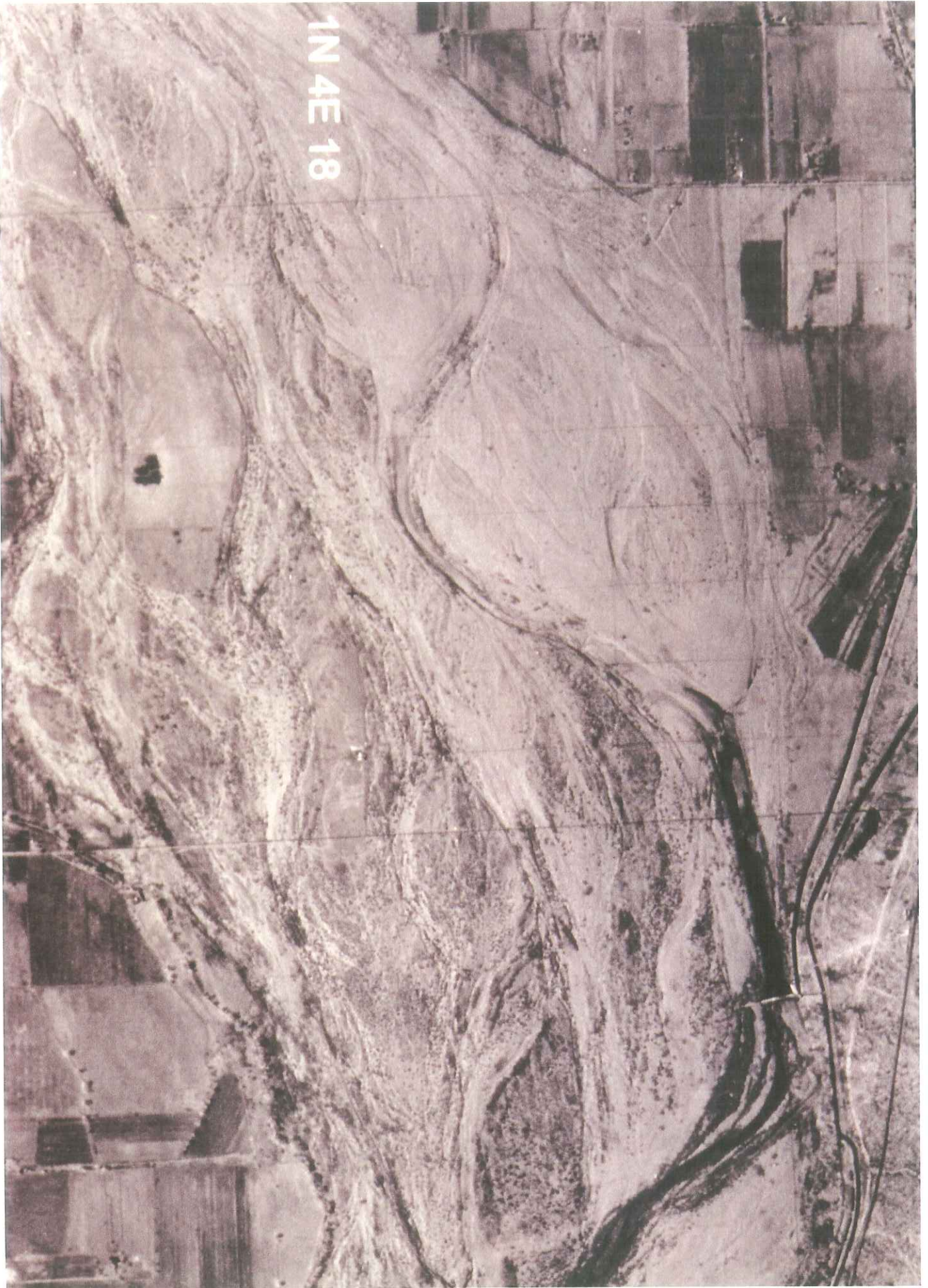
2N 5E 25



16



IN 4E 15



1N 4E 18

SALMON, LEWIS & WELDON, P.L.C.

Attorneys at Law

M. Byron Lewis
Stephen E. Crofton
Mark A. McGinnis
Karen S. Gaylord
Ronnie P. Hawks

Writer's Internet Address
mam@shplc.com

2850 E. Camelback Road, Suite 200
Phoenix, Arizona 85016
Telephone 602-801-9060
Facsimile 602-801-9070

Riney B. Salmon II, P.C.
John B. Weldon, Jr.
Lisa M. McKnight
James R. Huntwork
Richard N. Morrison
Kristin D. Magin
Writer's Direct Line
602-801-9066

Hand-delivered

April 24, 2003

RCV
4-24-03
D
shplc

Mr. George Mehnert
Arizona Navigable Stream Adjudication Commission
1700 West Washington, Room 304
Phoenix, AZ 85007

Re: In re Determination of Navigability of Lower Salt River

Dear George:

Enclosed are one set of slides and one set of color paper copies made from those slides. As you will recall, these are the slides used during Dr. Schumm's testimony and admitted as part of the evidence at the hearing.

If you have any questions or need additional copies, please call me.

Very truly yours,

Salmon, Lewis & Weldon, P.L.C.

By

Mark A. McGinnis
Mark A. McGinnis

Encls.

cc: David C. Roberts (w/ encls.)
Frederic L. Beeson (w/ encls.)