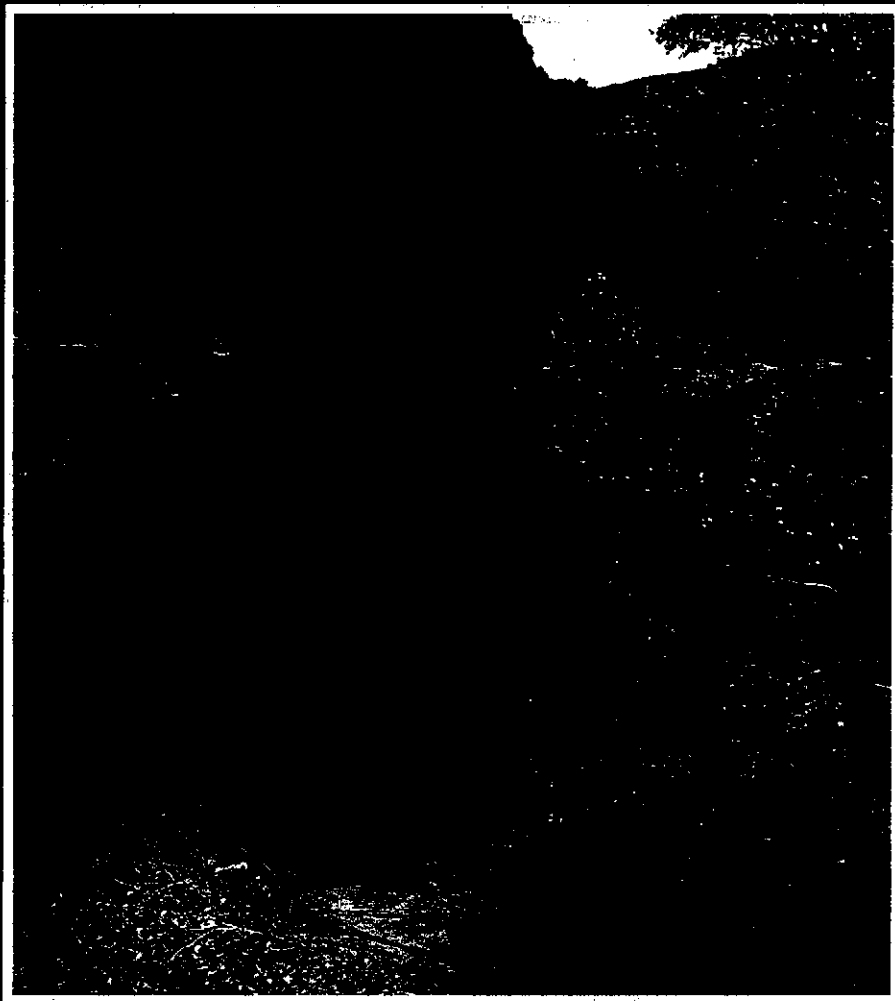


A R I Z O N A

Rivers and Streams

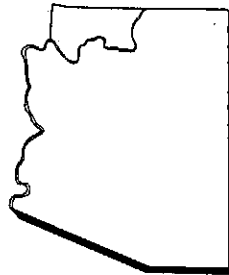
GUIDE



3/10/03

0/1

Arizona Rivers and Streams Guide



© 1989, Arizona State Parks

First Printing 1989
Second Printing 1993
Third Printing 1995
Fourth Printing 1998



SAN PEDRO RIVER — International Boundary to Benson

LENGTH: 56 miles
ACCESS: Paved road
FEATURES: Riparian preserve, profuse wildlife, rich history
CAUTIONS: Protected area, day use only, no pets
MAPS: USGS - Hereford, Tombstone SE, Fort Huachuca, Fairbank, Land USBLM - San Pedro Project

SEASON: Perennial flow
ELEVATION: 4250' - 3500'

The cottonwood-willow forest that lines the upper reaches of this river is such an outstanding example of one of the rarest and most rapidly disappearing habitats in North America, that 36 miles of it were recently acquired by the US Bureau of Land Management and designated a National Riparian Conservation Area. Its credentials are impressive. Over 350 species of birds, 82 species of mammals, and 47 species of reptiles and amphibians have been counted. Fossils of extinct mammoths, camels and tapirs indicate that the area has been productive for ages. It is the only site on the continent where those remains have been found with evidence that they were hunted by ancient peoples.

The stream itself is a humble one that flows year-round. Most people come here to observe the abundant wildlife, but hiking and horseback riding are also popular. The area offers an excellent interpretive center.

ACCESS: From Sierra Vista a number of roads lead east to the river and the Conservation Area. Other routes that lead to the river are AZ 90, AZ 92, Hereford Road and Charleston Road.

FACILITIES: Primitive camping is permitted on BLM land. There is a visitor contact center 7 miles east of Sierra Vista on AZ 90. Commercial campgrounds and other facilities are available in nearby Sierra Vista.

WILDLIFE: Diversity and uniqueness are the watchwords. Here you may see everything from crested caracaras to green kingfishers to eastern phoebes. Mammals include deer, coyote, kit foxes, coatimundis, bobcats and ringtails.

CAUTIONS: Above all else this is a preserve — recreational activities take a backseat to the welfare of the resource. Some areas are closed to the public. Walk softly.

INFORMATION: USBLM, San Pedro Project Office, Sierra Vista Chamber of Commerce.

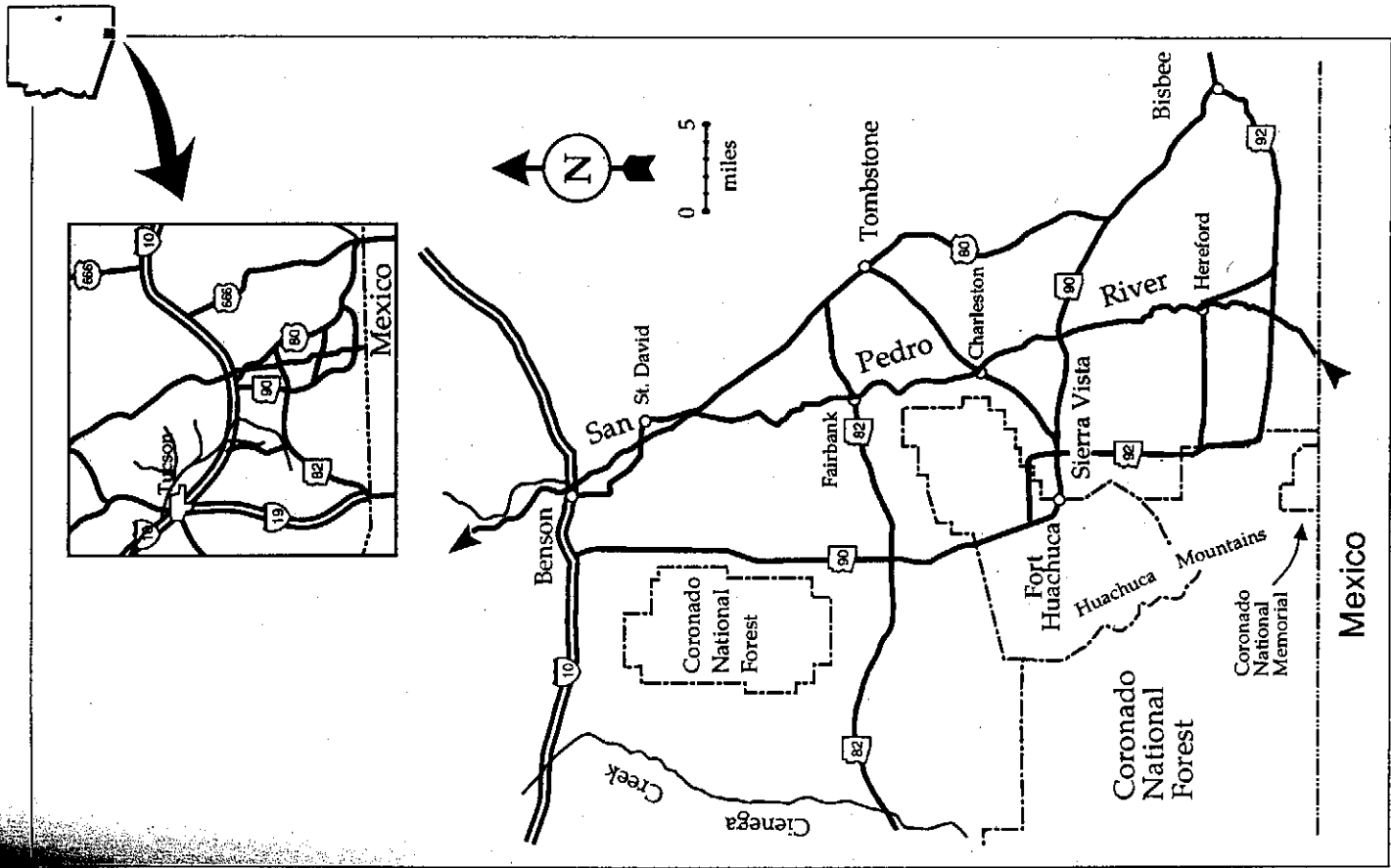
USES:



cold



primitive



SAN PEDRO RIVER — International Boundary to Benson 81