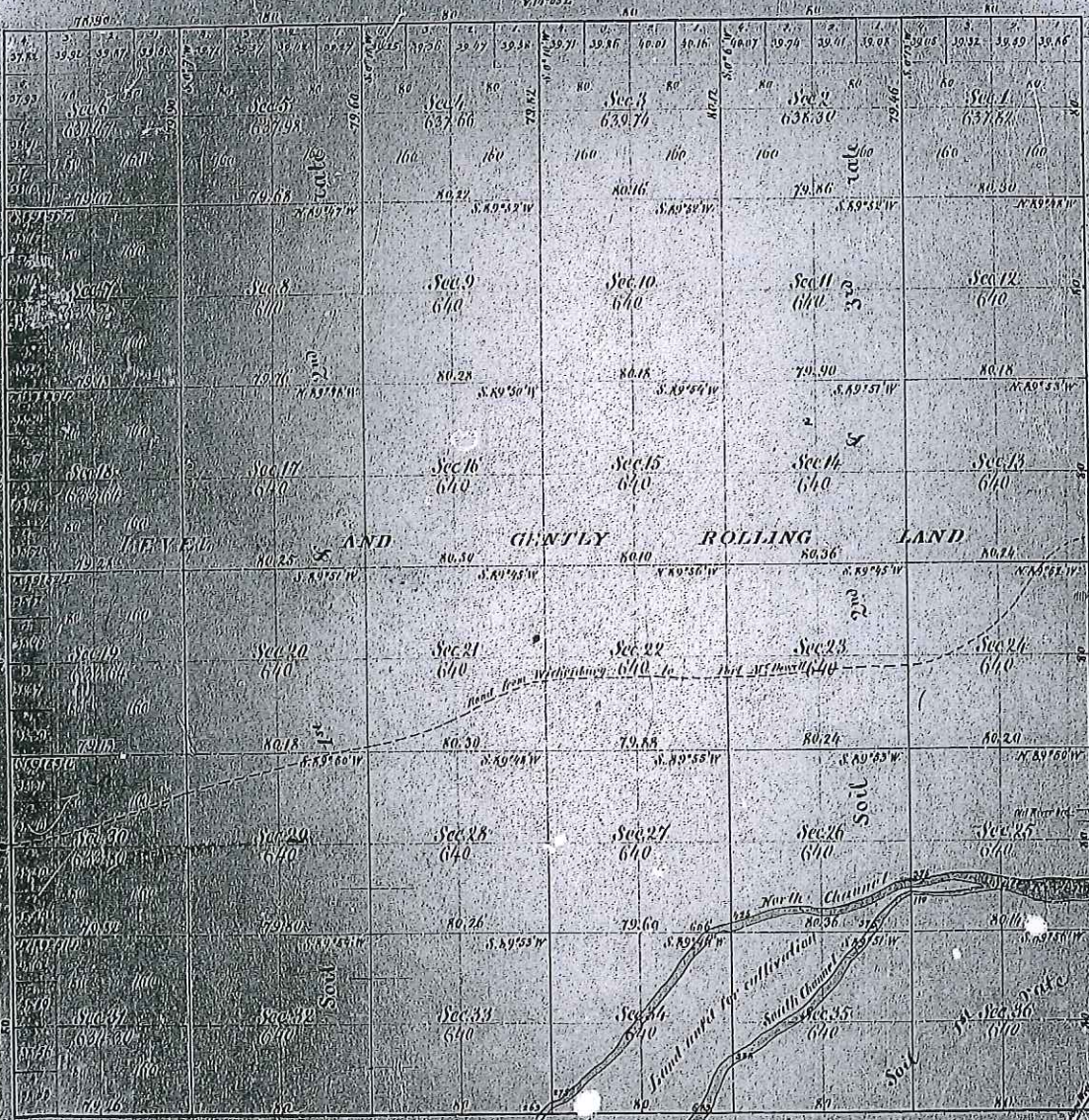


342

Township N° 2 North

Range N° 5 East,

Gila and Salt River Meridian



Received and filed in  
Prescott Arizona

THE SUSPENSION OF THIS SURVEY PLAT IS MADE BY  
AUTHORITY DIRECTOR'S MEMORANDUM DATED OCT. 31

This survey plat is hereby suspended by Author  
Memorandum dated January 17, 1969 and Director  
dated February 20, 1969.

OFFICIALLY FILED

Aggregate Area of Public

Section lines run at a variation of 1/4"

| Surveyor                   | File No. | Date of Survey  | Area of Survey | When Surveyed |
|----------------------------|----------|-----------------|----------------|---------------|
| South boundary of Township | 1118     | January 1868    | 1118           | 1868          |
| East of Township lines     | 1118     | January 22 1868 | 1118           | 1868          |
| Section lines              |          |                 | 39.3 77-78     | May 25 1868   |

The above Map of Township N° 2 North, Range N° 5 East, Gila and Salt River Meridian is hereby confirmed to be correct and in this office, which have been approved and filed in the Surveyor General's Office San Francisco, California December 22 1868

AND

GENTLY

ROLLING

80.25

80.50

80.10

S. 89° 51' W

S. 89° 45' W

N 89° 56' W

Sec 20  
640

Sec 21  
640

Sec 22  
640

Part M. Dawell

Road from Wachenburg 640 to

80.18

80.30

79.88

80

1st  
S. 89° 50' W

S. 89° 48' W

S. 89° 55' W

Sec 29  
640

Sec 28  
640

Sec 27  
640

Sec 26  
640

79.80

80.26

79.60

North

S. 89° 54' W

S. 89° 53' W

S. 89° 48' W

Soil

Sec 32  
640

Sec 33  
640

Sec 34  
640

South Ch...

Land unfit for cultivation

80

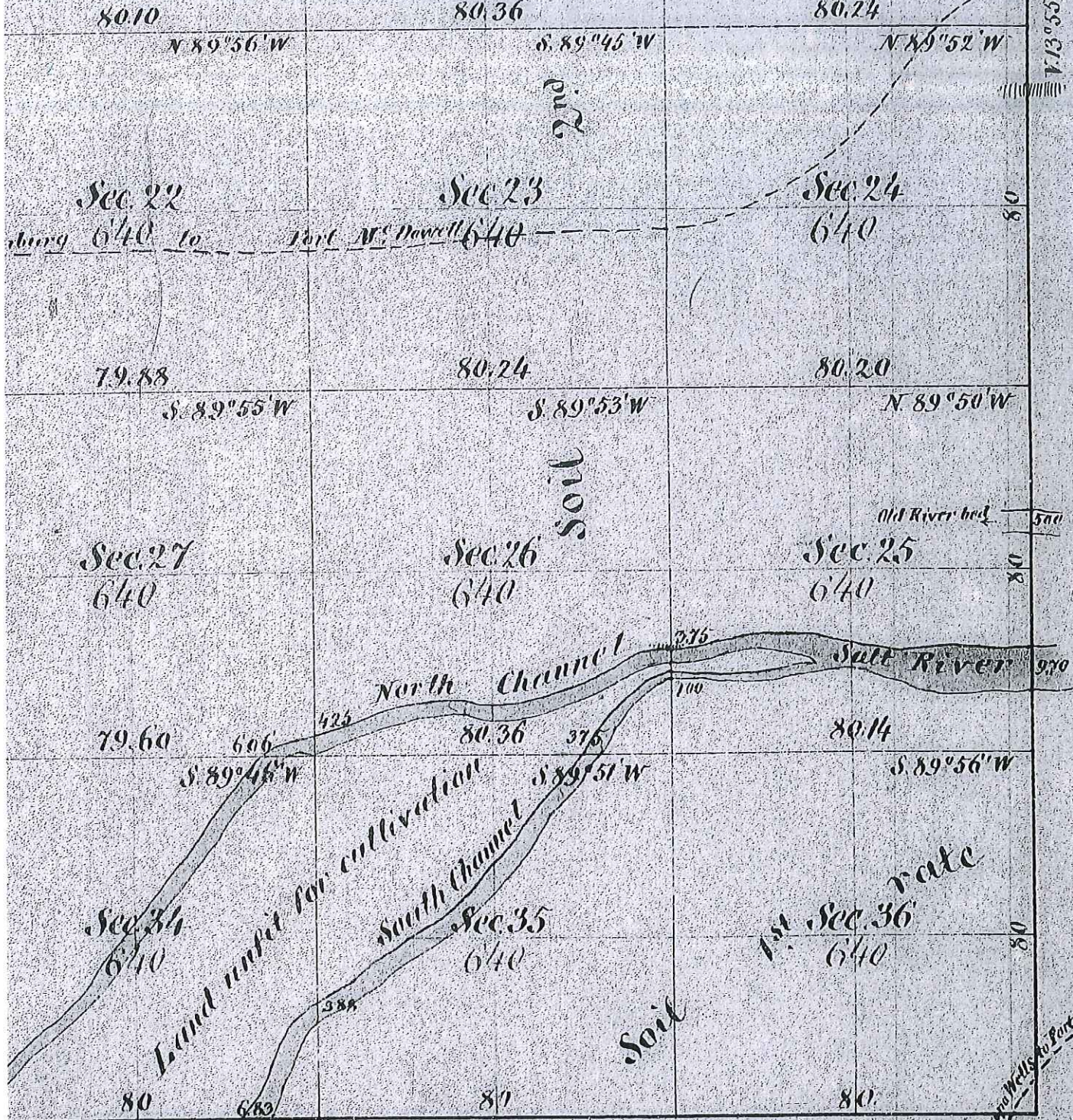
80

80

N 13° 51' E

| By Whom Surveyed | Date of Contract               | Amount of Surveys                                     | When Surveyed             |
|------------------|--------------------------------|---|---------------------------|
| W. F. Ingalls    | February 18 <sup>th</sup> 1868 |   | 1868                      |
| G. P. Ingalls    | February 29 <sup>th</sup> 1868 | 17M <sup>cs</sup> 78C <sup>cs</sup> 90L <sup>cs</sup> | 1868                      |
| " " "            | " " " "                        | 59 " 77 " 76 "  | May 25 <sup>th</sup> 1868 |

LY ROLLING LAND



| Amount of Surveys                                 | When Surveyed             |
|---|---------------------------|
|   | 1868                      |
| M <sup>rs</sup> 78 <sup>cs</sup> 90 <sup>cs</sup> | 1868                      |
| " 77 <sup>cs</sup> 76 <sup>cs</sup> "             | May 25 <sup>th</sup> 1868 |

The  
 River Meridian is stric  
 in this office, which  
 Surve  
 Jan 4  
 Decen