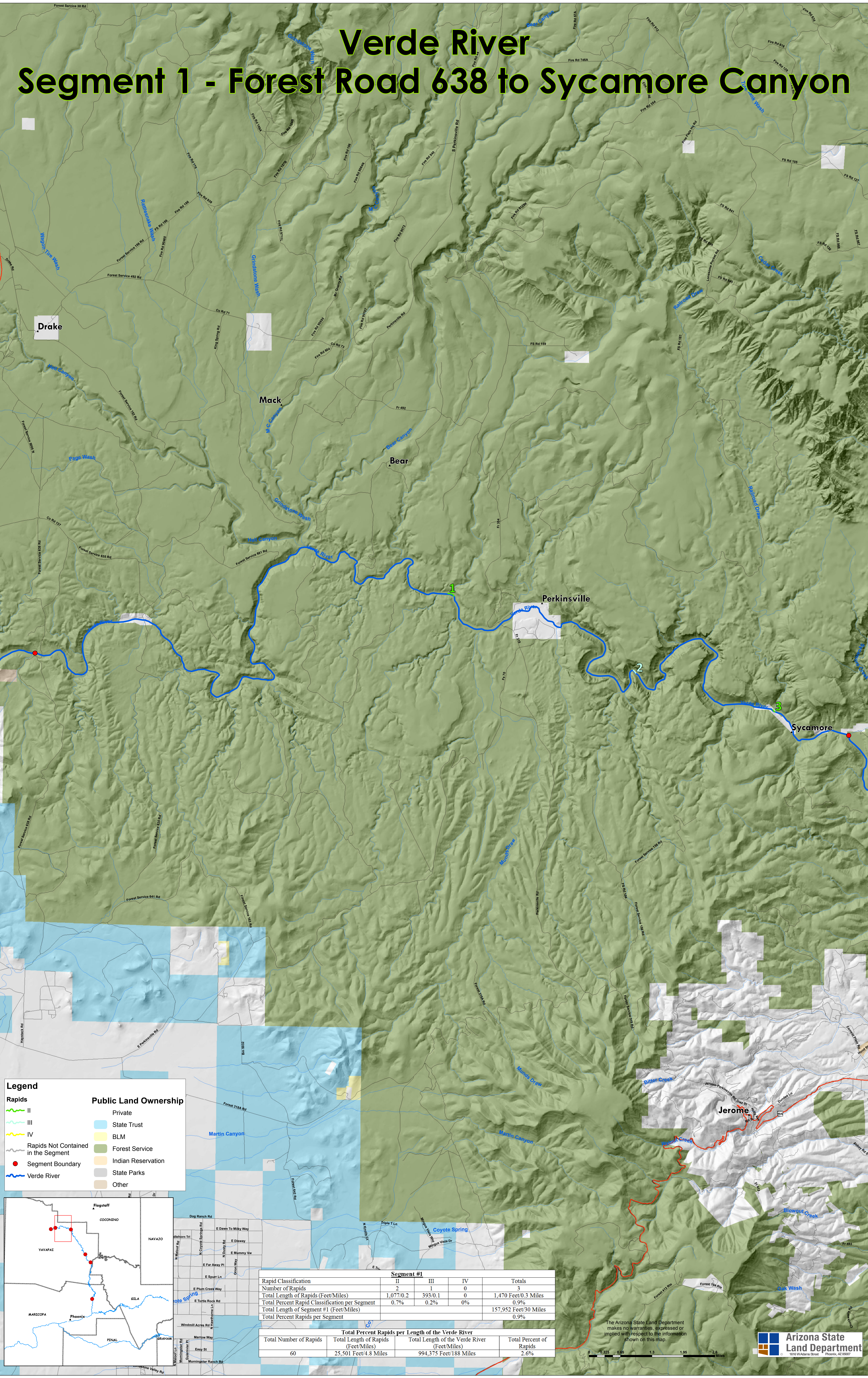


137

Verde River Segment 1 - Forest Road 638 to Sycamore Canyon



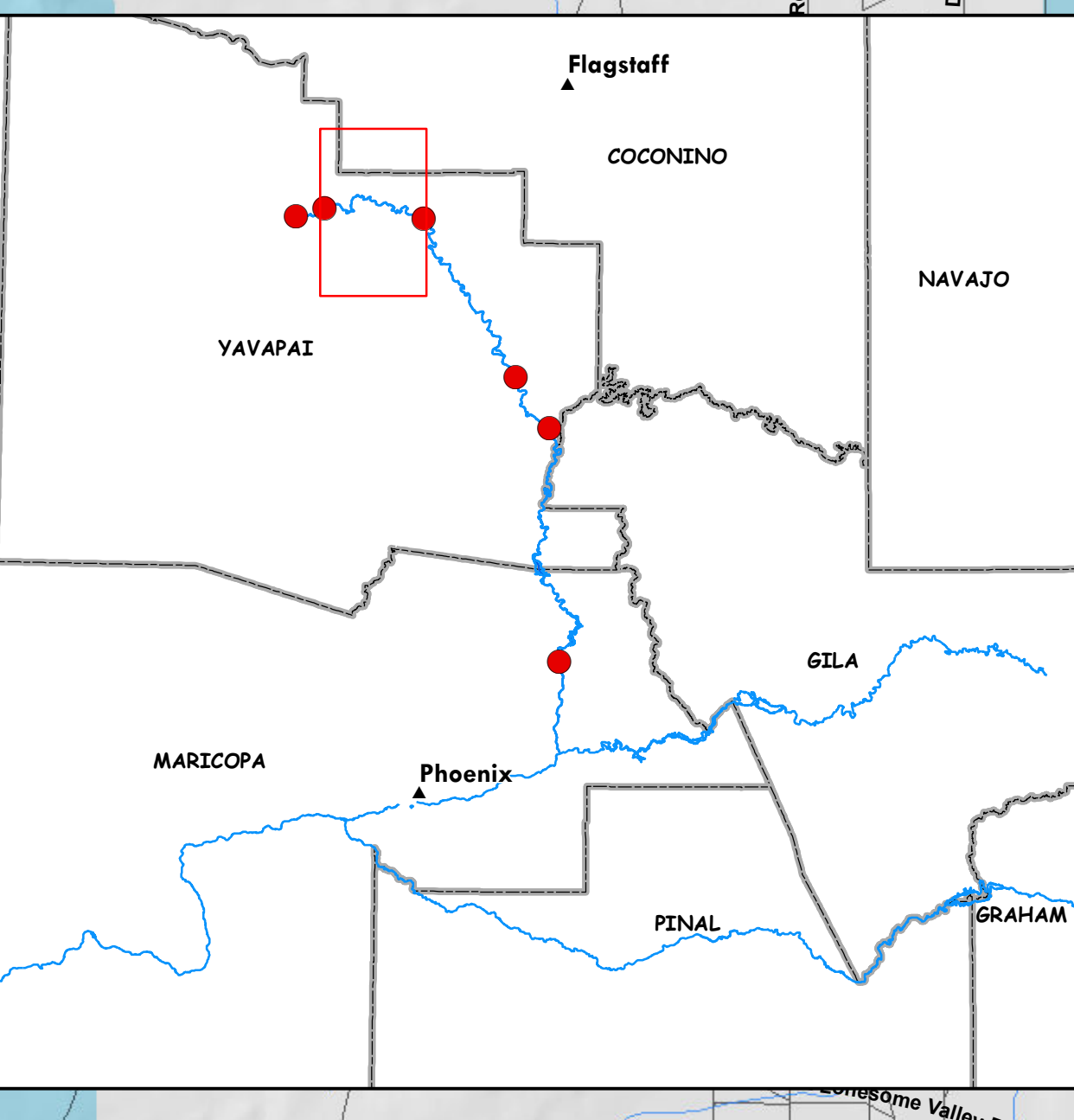
Legend

Rapids

- II
- III
- IV
- Rapids Not Contained in the Segment
- Segment Boundary
- Verde River

Public Land Ownership

- Private
- State Trust
- BLM
- Forest Service
- Indian Reservation
- State Parks
- Other



| Segment #1 | | | | |
|--|-----------|---------|----|-----------------------|
| Rapid Classification | II | III | IV | Totals |
| Number of Rapids | 2 | 1 | 0 | 3 |
| Total Length of Rapids (Feet/Miles) | 1,077/0.2 | 393/0.1 | 0 | 1,470 Feet/0.3 Miles |
| Total Percent Rapid Classification per Segment | 0.7% | 0.2% | 0% | 0.9% |
| Total Length of Segment #1 (Feet/Miles) | | | | 157,952 Feet/30 Miles |
| Total Percent Rapids per Segment | | | | 0.9% |

| Total Percent Rapids per Length of the Verde River | | | |
|--|-------------------------------------|--|-------------------------|
| Total Number of Rapids | Total Length of Rapids (Feet/Miles) | Total Length of the Verde River (Feet/Miles) | Total Percent of Rapids |
| 60 | 25,501 Feet/4.8 Miles | 994,375 Feet/188 Miles | 2.6% |

The Arizona State Land Department makes no warranties, expressed or implied with respect to the information shown on this map.

