

163

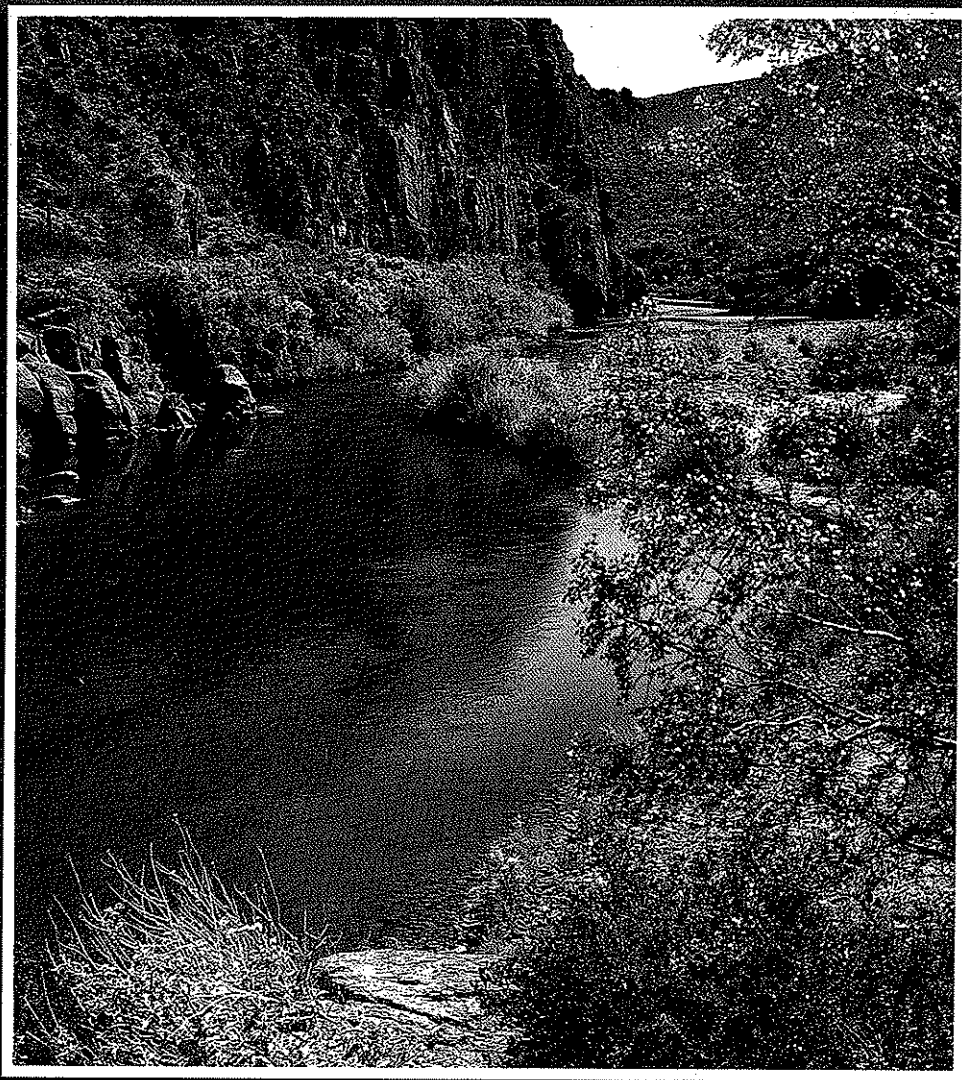
# A R I Z O N A

---

## *Rivers and Streams*

---

### GUIDE



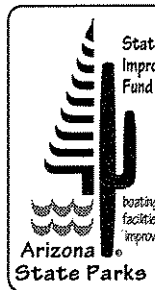


Arizona State Parks  
1300 West Washington  
Phoenix, AZ 85007

(602) 542-4174  
(800) 285-3703  
from 520 area code

<http://www.pr.state.az.us>

This document is available in alternative formats by contacting the Public Information Officer.



This guide was produced for Arizona State Parks, with money from the State Lake Improvement Fund, by Recreative Ink, a Flagstaff based publishing firm. Recreative Ink specializes in preparing guides, informative literature, and computer programs on outdoor (recreative) activities.

The bulk of the research for this guide, and all the writing was done by Dan Dagget. The maps were drawn by Dawson Henderson, with help from Ed Locke. The layout, editing and typesetting were by Ken Walters of Gneiss Structures.

Cover Design by Paul Mirocha and Tanna Thornburg

Cover photo of the Salt River by Kenneth Walters

Section photos:

Introduction	Salome Creek	Dan Dagget	
Northern	Colorado River	Kenneth Walters	pg 18
Western	Bill Williams River	Tanna Thornburg	pg 44
	Colorado River	Tanna Thornburg	pg 44
Southern	Aravaipa Creek	Tanna Thornburg	pg 62
Eastern	White River—East Fork	Dan Dagget	pg 86
Central	Verde River	Charles Eatherly	pg 130
	West Clear Creek	Tanna Thornburg	pg 130
Appendix	Black River	Tanna Thornburg	pg 176

Camera-ready copy was produced with Apple® Macintosh™ computers and Apple® LaserWriter II<sub>NT</sub>™ printers, using Microsoft Word, Adobe Illustrator 88, and Aldus PageMaker. The font used is Palatino.

All rights reserved. No part of this book may be translated or reproduced in any form, except brief extracts by a reviewer for the purpose of a review, without written permission of Arizona State Parks.

Although Arizona State Parks and Recreative Ink have made every effort to ensure the information was correct at the time of going to press, they do not assume and hereby disclaim any liability to any party for any loss or damage caused by errors, omissions, or any potential travel disruption due to errors or omissions, resulting from negligence, accident or any other cause.

---

## ICONS



Whitewater boating



Flat water boating



Low water boating



Waterplay



Fishing



Hiking trails



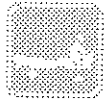
Undeveloped camping



Developed camping



No big water boating



No low water boating



No waterplay



No or poor fishing



No hiking trails



No camping

## Wildcard ICONS



Birdwatching



Picnicking



Horseback riding



Power boating



Wild animals commonly sighted

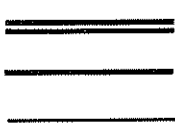


Photography/spectacular scenery

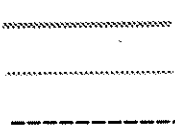


An area with historical or archaeological significance

# Map Symbols

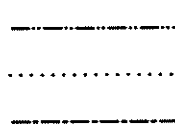


Divided Highway and Freeways  
 Paved Road, suitable for all cars  
 Dirt or Gravel Road, inquire about conditions



Stream Segment  
 Other Streams  
 Trail

▶ Arrows show location of segment and point down stream



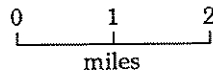
State Border  
 Special Use Areas, i.e., Closed or Restricted Entry  
 Agency Jurisdictional Boundaries  
 i.e., Forest Service, Indian lands, Wilderness

- Ⓟ Parking Areas
- ▲ Campgrounds
- ⊙ ○ Cities and Towns
- Sites of Special Interest

- Interstate Highway
- U.S. Highway
- Reservation Route
- State Highway



North is always towards the top of the page



The scale will change from map to map