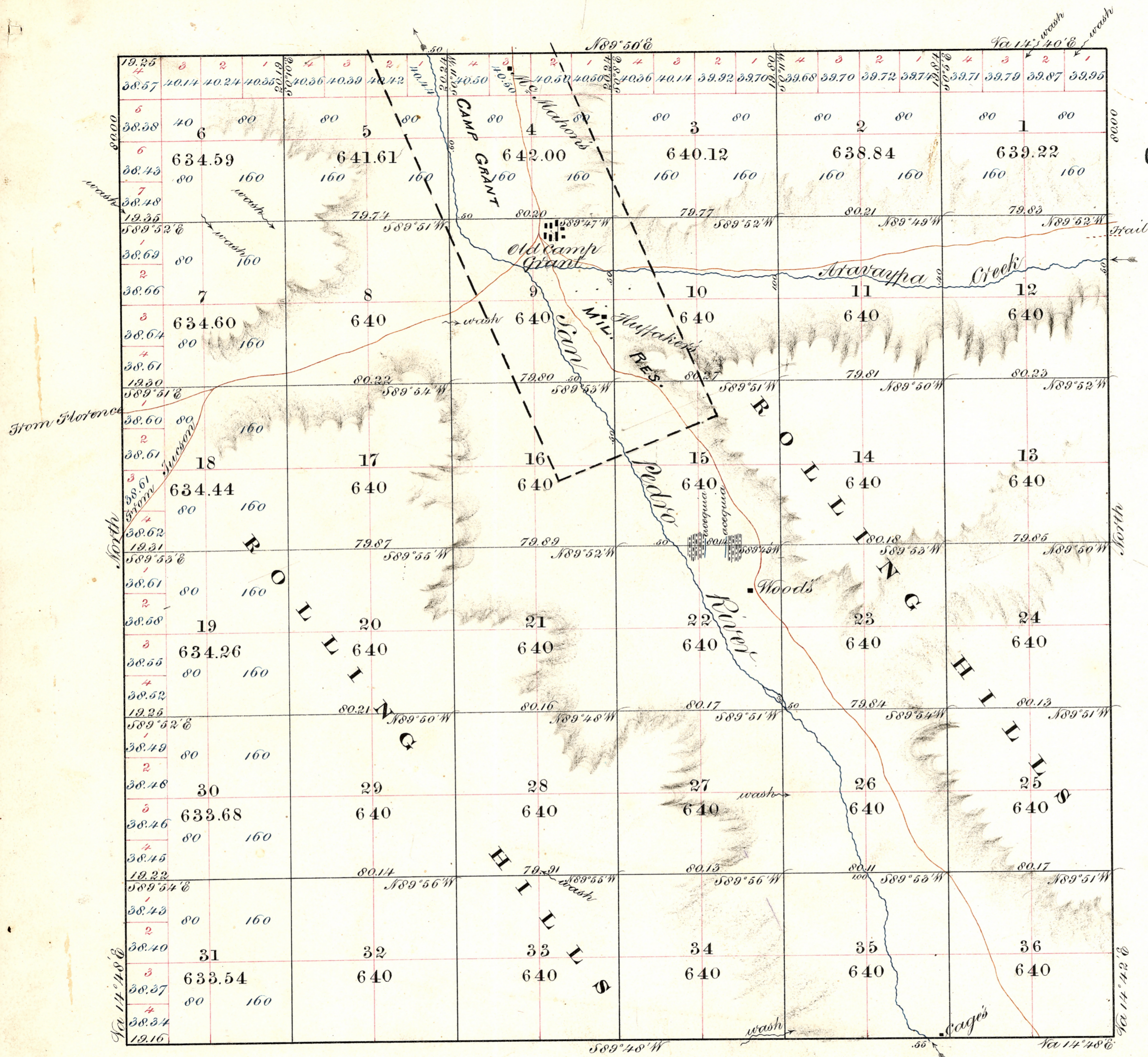


**ATTACHMENT E**  
**Historic Maps and Aerial Photographs of**  
**the San Pedro River from Aravaipa**  
**Creek to Dudleyville**

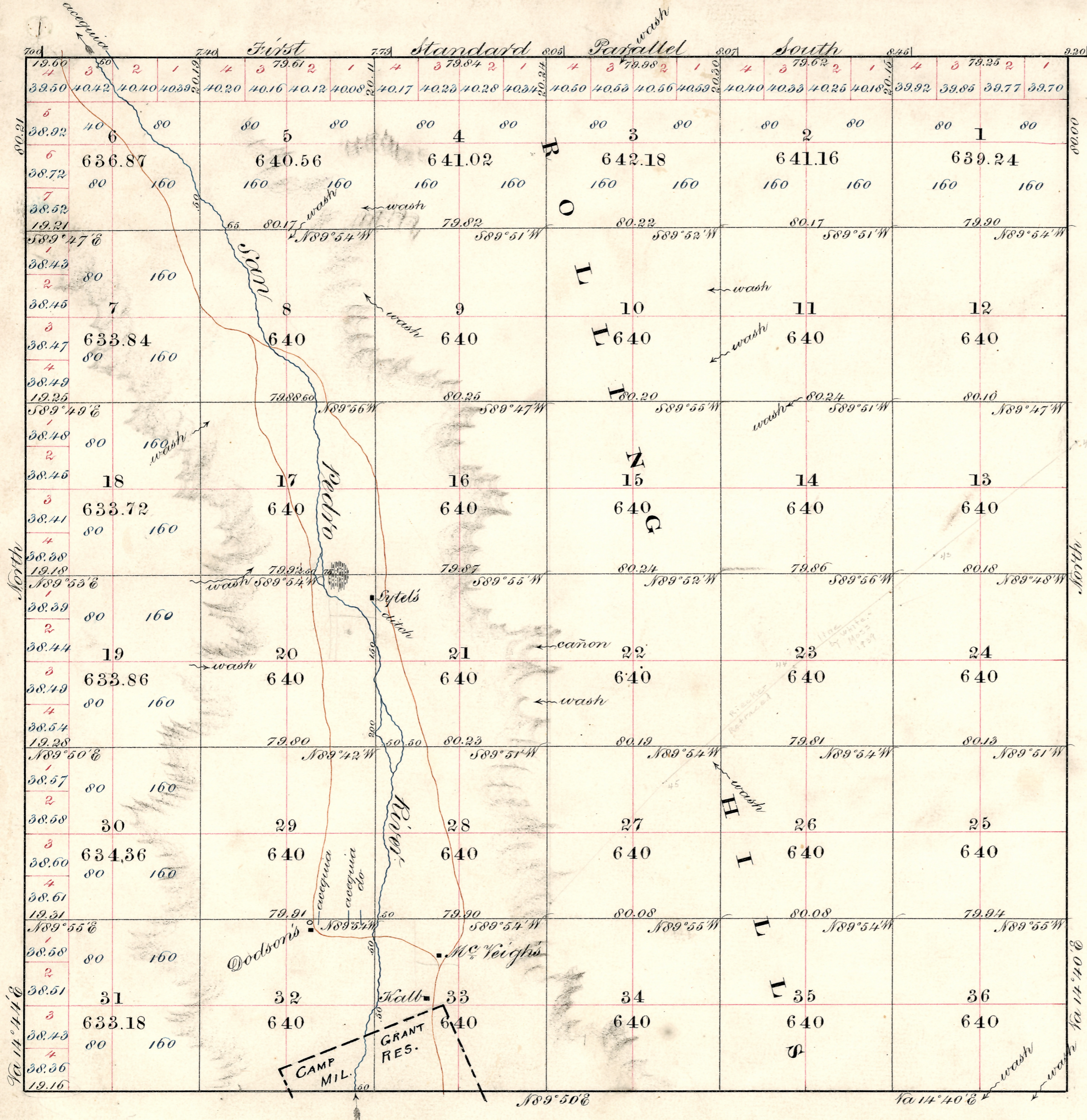


Subdivision lines run at a variation of 14' 42" East.  
Area 23006.90 acres

Surveys Designated.	By Whom Surveyed.	Date of Contract.	Amount of Surveys. Ms. Chs. Lks.	When Surveyed
Township Lines	J. L. Hart's	July 17-1877	23 78 41	Nov. 23 Dec. 3 1877
Subdivisions.	do	do	59 77 72	Dec. 3-8-

The above Map of Township No. 7 South of Range No. 16 East... Gila and Salt River Meridian, Arizona, is strictly conformable to the field notes of the survey thereof on file in this office, which have been examined and approved.

Surveyor General's Office,  
Tucson, Arizona, Feb. 28<sup>th</sup> 1878.  
Sur. Gen.



OFFICIALLY FILED 5-4-1878

Subdivision lines run at a variation of 14.40 East.  
Area 23,009.99 acres

Surveys Designated.	By Whom Surveyed.	Date of Contract.	Amount of Surveys. Ms. Chs. Lks.	When Surveyed
Township Lines	J. S. Harris	July 17-1877	17.79.37	Dec: 1-10-1877
Subdivisions.	do	do	59.78.31	Dec: 11-15-1877
Standard	do	do	6.00.00	Dec: 10-1877

The above Map of Township No. 6 South of Range No. 16 East Gila and Salt River Meridian, Arizona, is strictly conformable to the field notes of the survey thereof on file in this office, which have been examined and approved.

Surveyor General's Office,  
Tucson, Arizona, Feb. 28<sup>th</sup> 1878.

*John Massam*  
Sur. Gen.



R.B. Marshall, Chief Geographer.  
I.G. Gardine, Geographer in charge.  
Topography by Pearson Chapman, J.G. Staack, S.G. Lunde,  
Stuart T. Penick, T.P. Pendleton, and J.E. Blackburn.  
Control by T.M. Bannon, L.F. Biggs, M.S. Bright, and Thos. Winson  
Surveyed in 1910 and 1911.

TRUE NORTH  
MAGNETIC NORTH  
APPROXIMATE MEAN  
DECLINATION, 1910

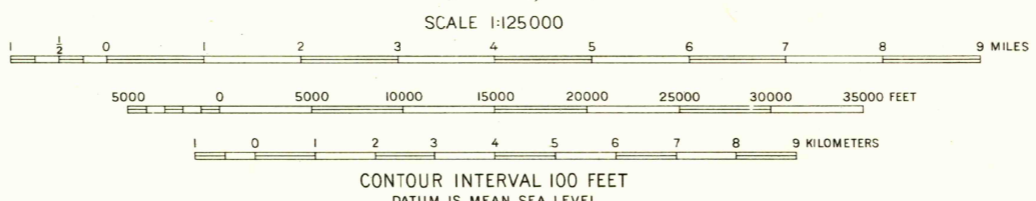


DIAGRAM OF TOWNSHIP

6	5	4	3	2	1
7	8	9	10	11	12
18	17	16	15	14	13
19	20	21	22	23	24
30	29	28	27	26	25
31	32	33	34	35	36

Polygonic projection. To place on 1927 North American datum  
move projection lines 465 feet south and 350 feet west  
The northeast, northwest, and southeast quarters  
of this area are covered by 1:62,500 and 1:24,000  
scale maps from later and more detailed surveys.

ARIZ.  
WINKELMAN  
N3230-W103030

1911

USGS  
Historical File  
Topographic Division

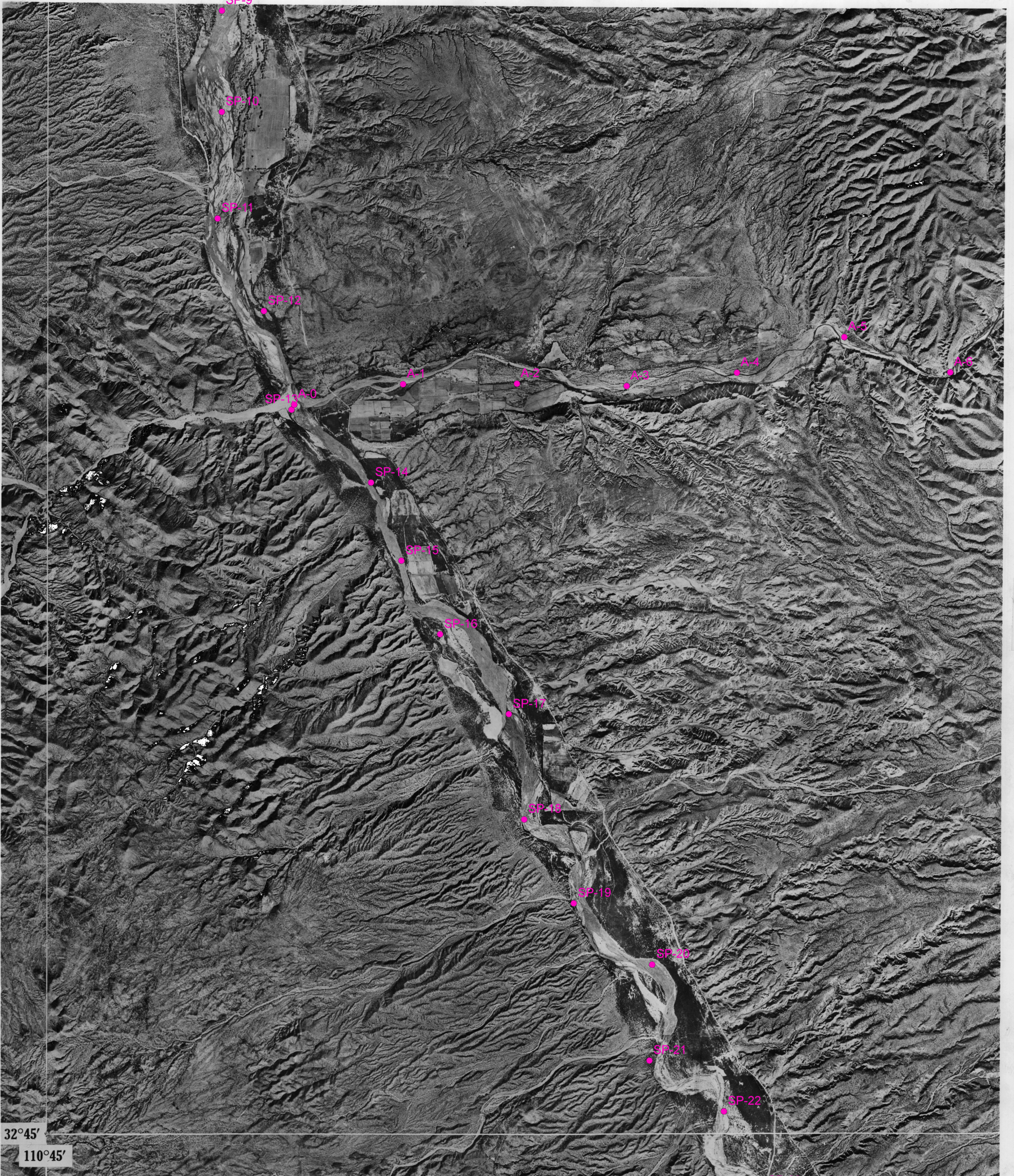
U.S.G.S.  
FILE COPY  
TOPOGRAPHIC DIVISION

FOR SALE BY U. S. GEOLOGICAL SURVEY, DENVER 2, COLORADO OR WASHINGTON 25, D. C.  
A FOLDER DESCRIBING TOPOGRAPHIC MAPS AND SYMBOLS IS AVAILABLE ON REQUEST

U.S.G.S.  
TOPOGRAPHIC DIVISION  
FILE COPY

2145  
AUG 14 19

# Lookout Mountain



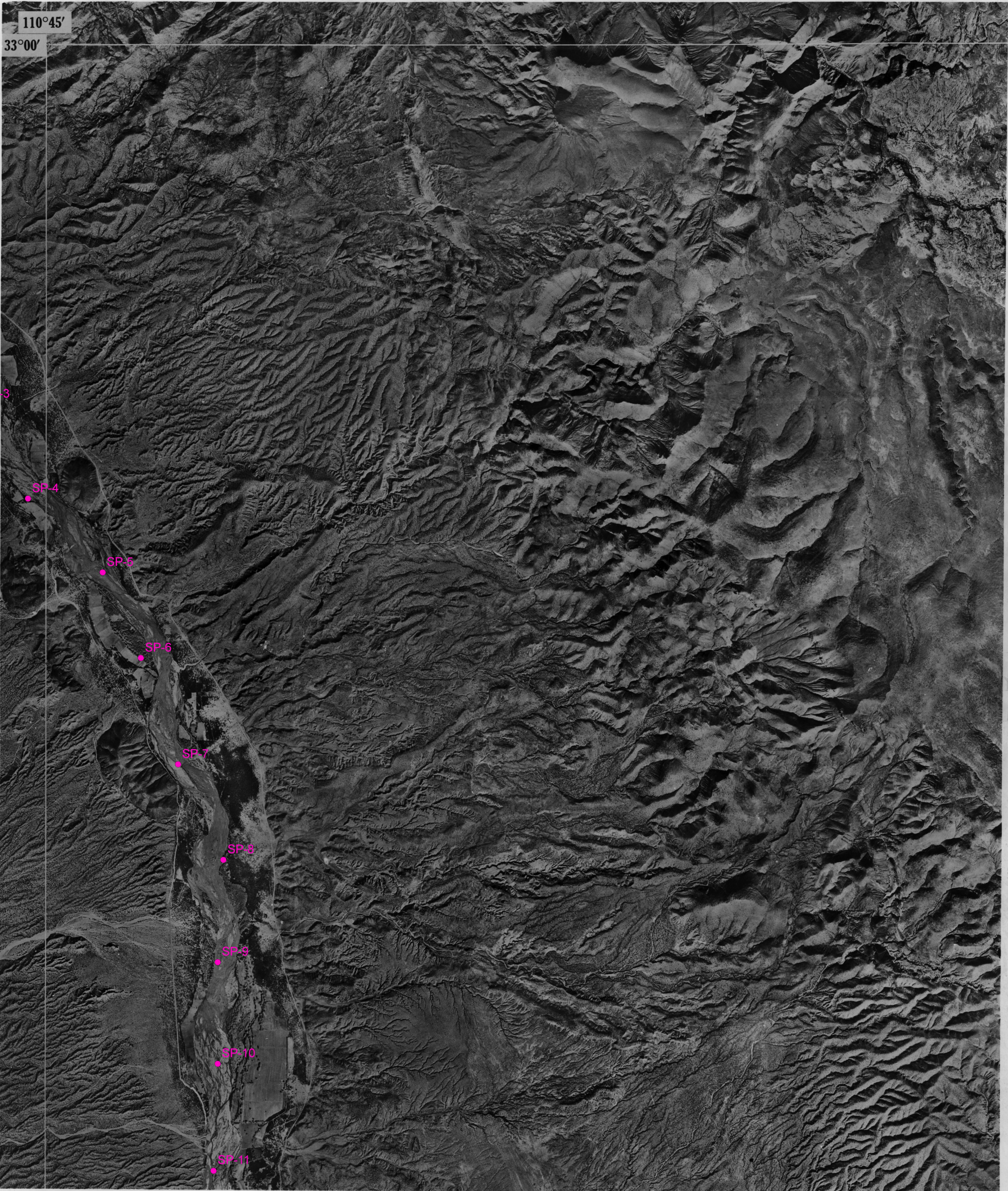
32°45'

110°45'

1935

SP-24

# Dudleyville



110°45'  
33°00'

1935

DUDLEYVILLE, AZ

A-8  
A-7  
A-6  
Saddle Mtn. Az. 365-NW

SP-12

SP-10

SP-9

SP-8

SP-7

SP-6

SP-5

SP-4

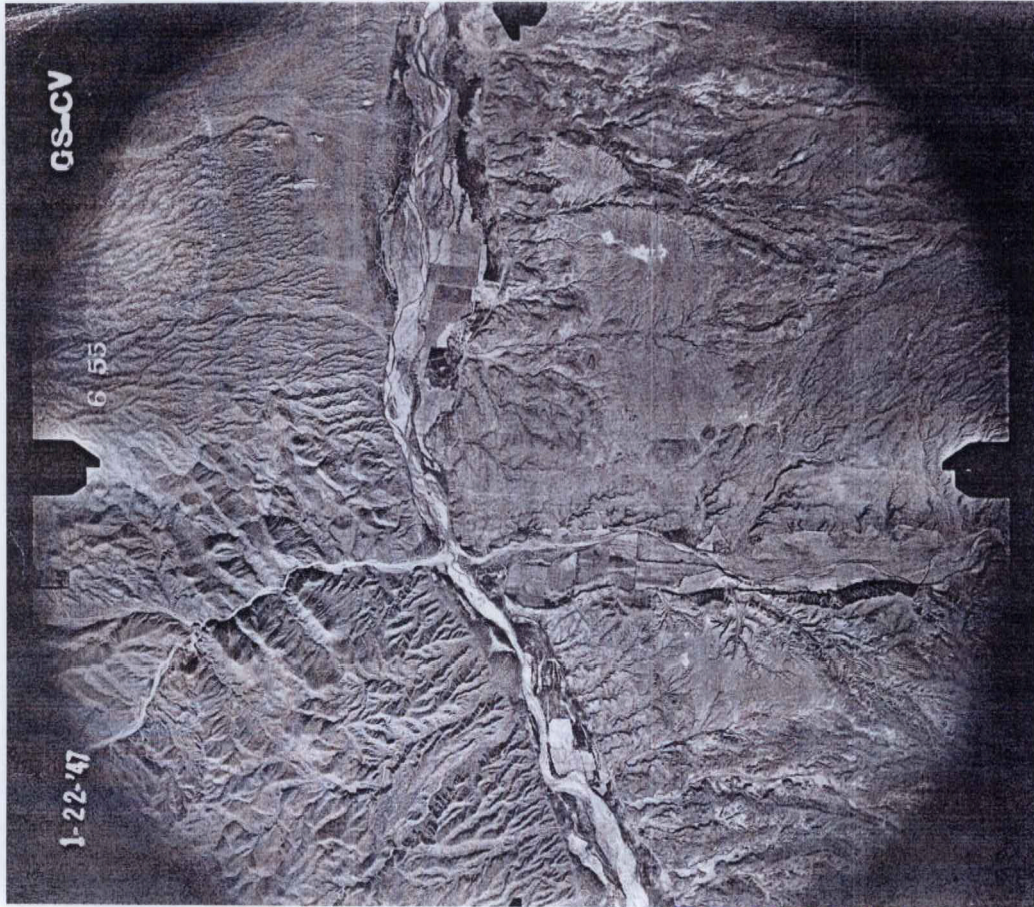
SP-3

SP-2

A-8

A-7

A-6

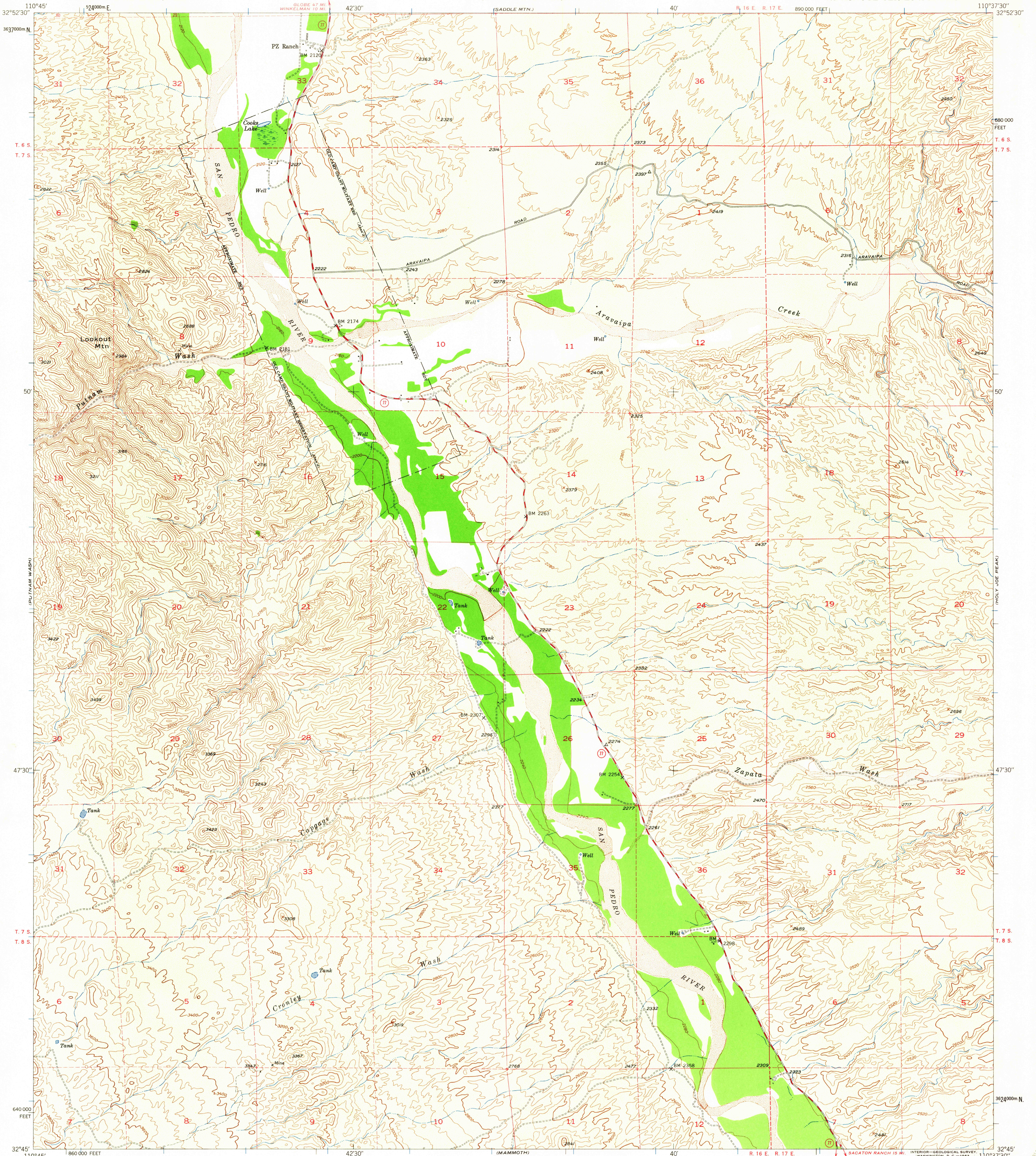


RECEIVED

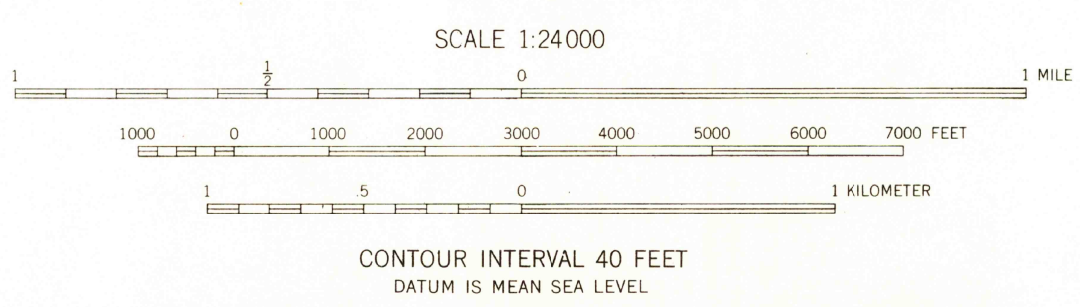
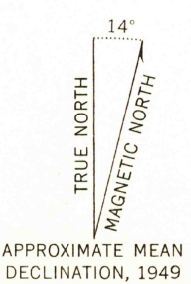
SEP 30 2005

AZ DEPT OF WATER RESOURCES  
SURFACE WATER

Title: U:\LUH\Stambaugh\19470122 Aerial.jpg



Mapped, edited, and published by the Geological Survey  
Control by USGS and USACE  
Topography from aerial photographs by multiplex methods  
Aerial photographs taken 1947. Field check 1949  
Polyconic projection. 1927 North American datum  
10,000-foot grid based on Arizona coordinate system,  
east zone  
Dashed land lines indicate approximate location  
1000-meter Universal Transverse Mercator grid ticks,  
zone 12, shown in blue



USGS  
Historical File  
Topographic Division



ROAD CLASSIFICATION  
1949  
Medium-duty ——— Light-duty ———  
Unimproved dirt - - - - -  
State Route ○

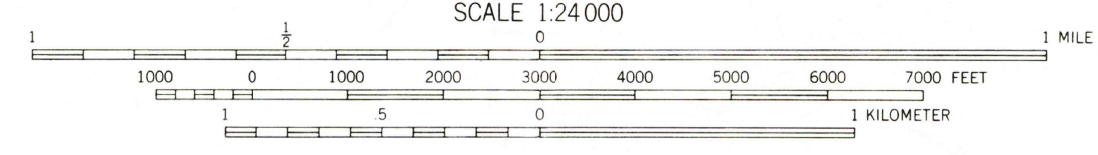
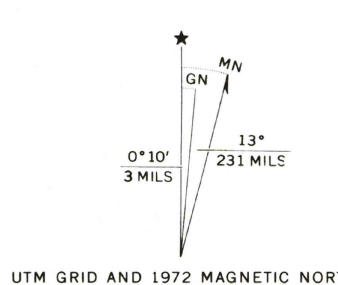
LOOKOUT MTN., ARIZ.  
N3245-W11037.5/7.5

THIS MAP COMPLIES WITH NATIONAL MAP ACCURACY STANDARDS  
FOR SALE BY U. S. GEOLOGICAL SURVEY, DENVER 25, COLORADO OR WASHINGTON 25, D. C.  
A FOLDER DESCRIBING TOPOGRAPHIC MAPS AND SYMBOLS IS AVAILABLE ON REQUEST



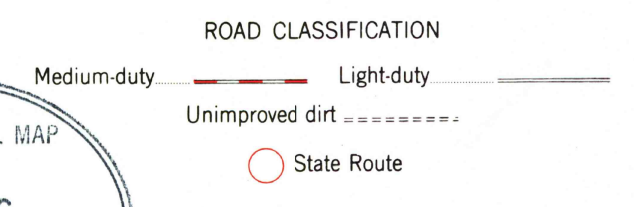


Mapped, edited, and published by the Geological Survey  
Control by USGS and USC&GS  
Topography from aerial photographs by multiplex methods  
Aerial photographs taken 1947. Field check 1949  
Polyconic projection. 1927 North American datum  
10,000-foot grid based on Arizona coordinate system,  
central zone  
1000-meter Universal Transverse Mercator grid ticks,  
zone 10, shown in blue  
To place on the predicted North American Datum 1983  
move the projection lines 4 meters south and  
61 meters east as shown by dashed corner ticks  
Dashed land lines indicate approximate locations



CONTOUR INTERVAL 40 FEET  
NATIONAL GEODETIC VERTICAL DATUM OF 1929

THIS MAP COMPLIES WITH NATIONAL MAP ACCURACY STANDARDS  
FOR SALE BY U. S. GEOLOGICAL SURVEY, DENVER, COLORADO 80225, OR RESTON, VIRGINIA 22092  
A FOLDER DESCRIBING TOPOGRAPHIC MAPS AND SYMBOLS IS AVAILABLE ON REQUEST

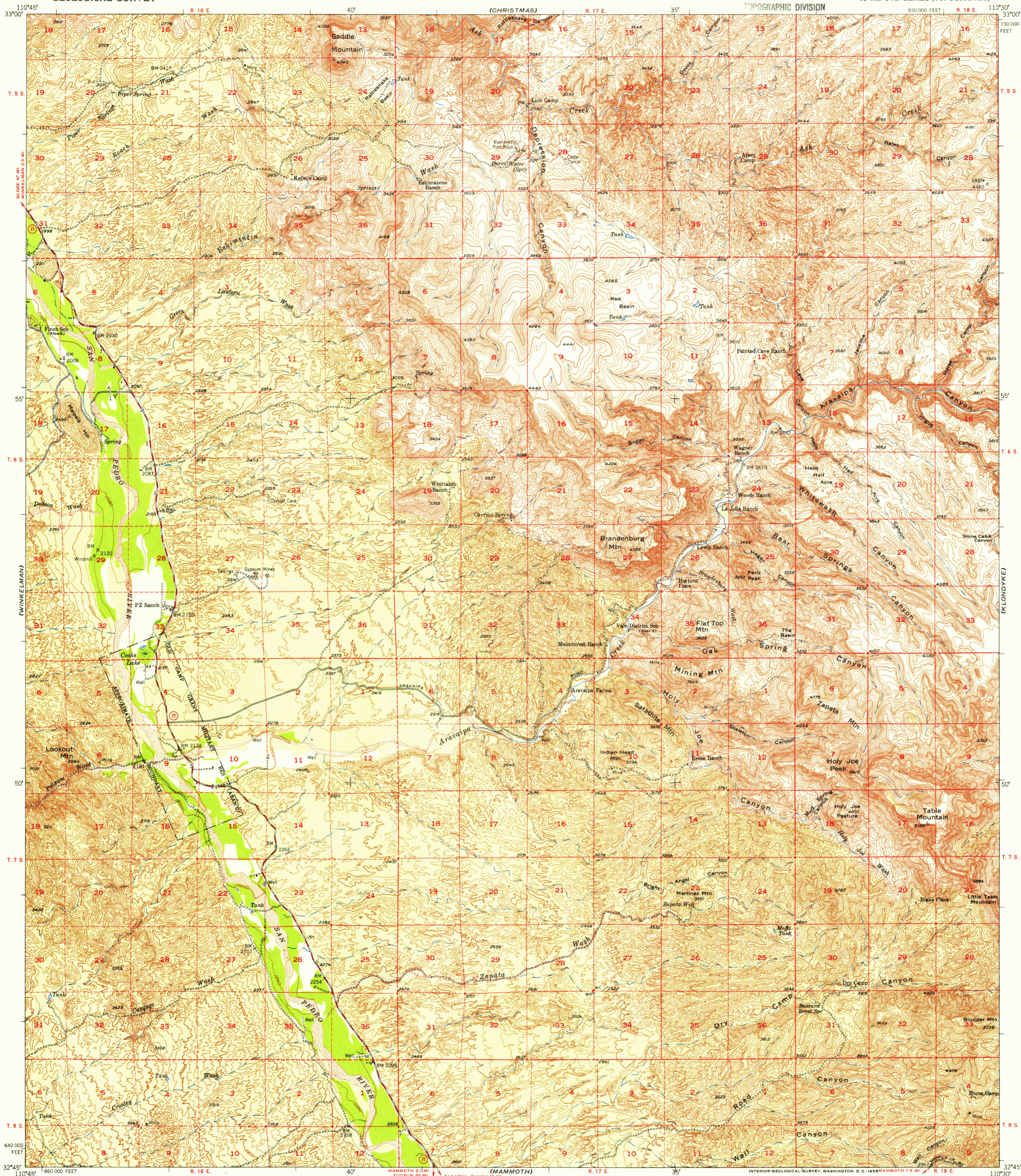


DUDLEYVILLE, ARIZ.  
(FORMERLY SADDLE MTN.)  
32110-H6-TF-024

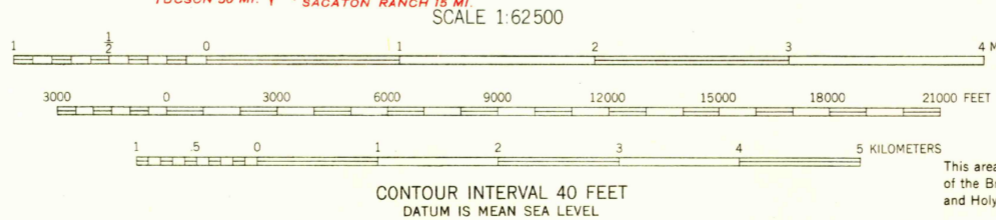
1949  
PHOTOREVISED 1972  
DMA 3849 1 NW - SERIES V898

Revisions shown in purple compiled from aerial photographs  
taken 1972. This information not field checked

(FRAY)

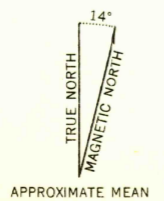


Mapped, edited, and published by the Geological Survey Control by USGS and USC&GS Topography from aerial photographs by multiplex methods Aerial photographs taken 1947. Field check 1949 Polyconic projection. 1927 North American Datum 10,000-foot grid based on Arizona coordinate system, central zone Dashed land lines indicate approximate location



USGS Historical File Topographic Division

ROAD CLASSIFICATION table with symbols for Heavy-duty, Medium-duty, Light-duty, and Unimproved dirt roads, as well as U.S. and State Routes.



THIS MAP COMPLES WITH NATIONAL MAP ACCURACY STANDARDS FOR SALE BY U.S. GEOLOGICAL SURVEY, FEDERAL CENTER, DENVER, COLORADO OR WASHINGTON 25, D. C. A FOLDER DESCRIBING TOPOGRAPHIC MAPS AND SYMBOLS IS AVAILABLE ON REQUEST

This area is also covered by 1:24,000 scale maps of the Brandenburg Mtn., Saddle Mtn., Lookout Mtn., and Holy Joe Peak 7 1/2 minute quadrangles

U.S.G.S. FILE COPY TOPOGRAPHIC DIVISION

HOLY JOE PEAK, ARIZ. N3245-W11030/15

1949 DEC 15 1955