

EXPLANATION

500  
WATER LEVEL CONTOUR—Shows altitude of the water level prior to development. Dashed where based on meager data, dotted where approximately located. Contour interval, in feet, is variable. National Geodetic Vertical Datum of 1929

1680  
SELECTED WELL—Number, 1680, is water-level altitude measured prior to extensive development

GROUND-WATER DIVIDE—Open circles where approximately located

GROUND-WATER UNDERFLOW—In acre-feet per year

More than 30,000

15,000-30,000

5,000-15,000

1,000-5,000

Less than 1,000

BASIN-FILL DEPOSITS

BEDROCK OF THE MOUNTAINS

BASALT FLOWS—Overlie basin-fill deposits and may act as a confining layer

GROUND-WATER BUDGET

GROUND-WATER OUTFLOW  
EVAPOTRANSPIRATION

GROUND-WATER INFLOW  
RECHARGE FROM INFILTRATING PRECIPITATION AND RUNOFF

UNDERFLOW

PERENNIAL STREAM LOSSES TO THE AQUIFER

RELATIVE MAGNITUDE OF OUTFLOW AND INFLOW—In acre-feet per year

More than 100,000

50,000-100,000

10,000-50,000

5,000-10,000

Less than 5,000

4  
11,000

RATIO OF ANNUAL INFLOW TO TOTAL VOLUME STORED IN THE GROUND-WATER SYSTEM—Upper number, 4, is the estimated average inflow and outflow to the aquifer of the basin, in thousands of acre-feet. Lower number, 11,000, is the estimated recoverable ground water in the basin-fill material to a depth of 1,200 feet below land surface, in thousands of acre-feet, rounded to the nearest million acre-feet

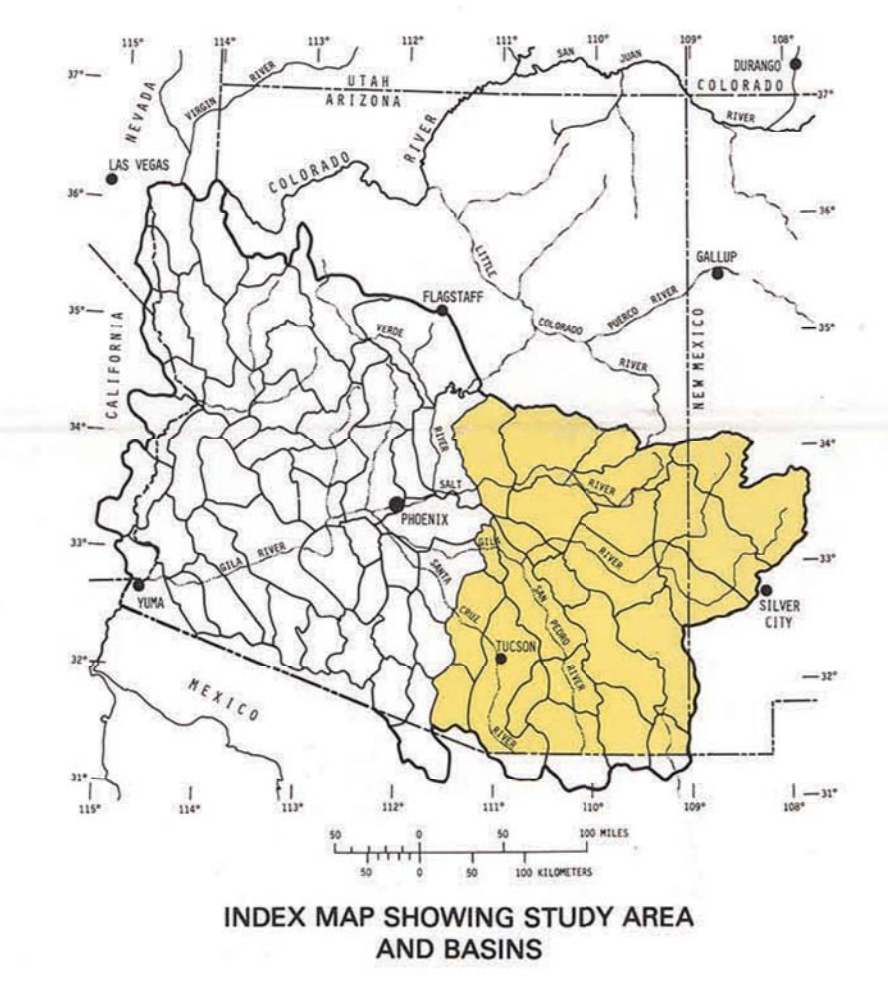
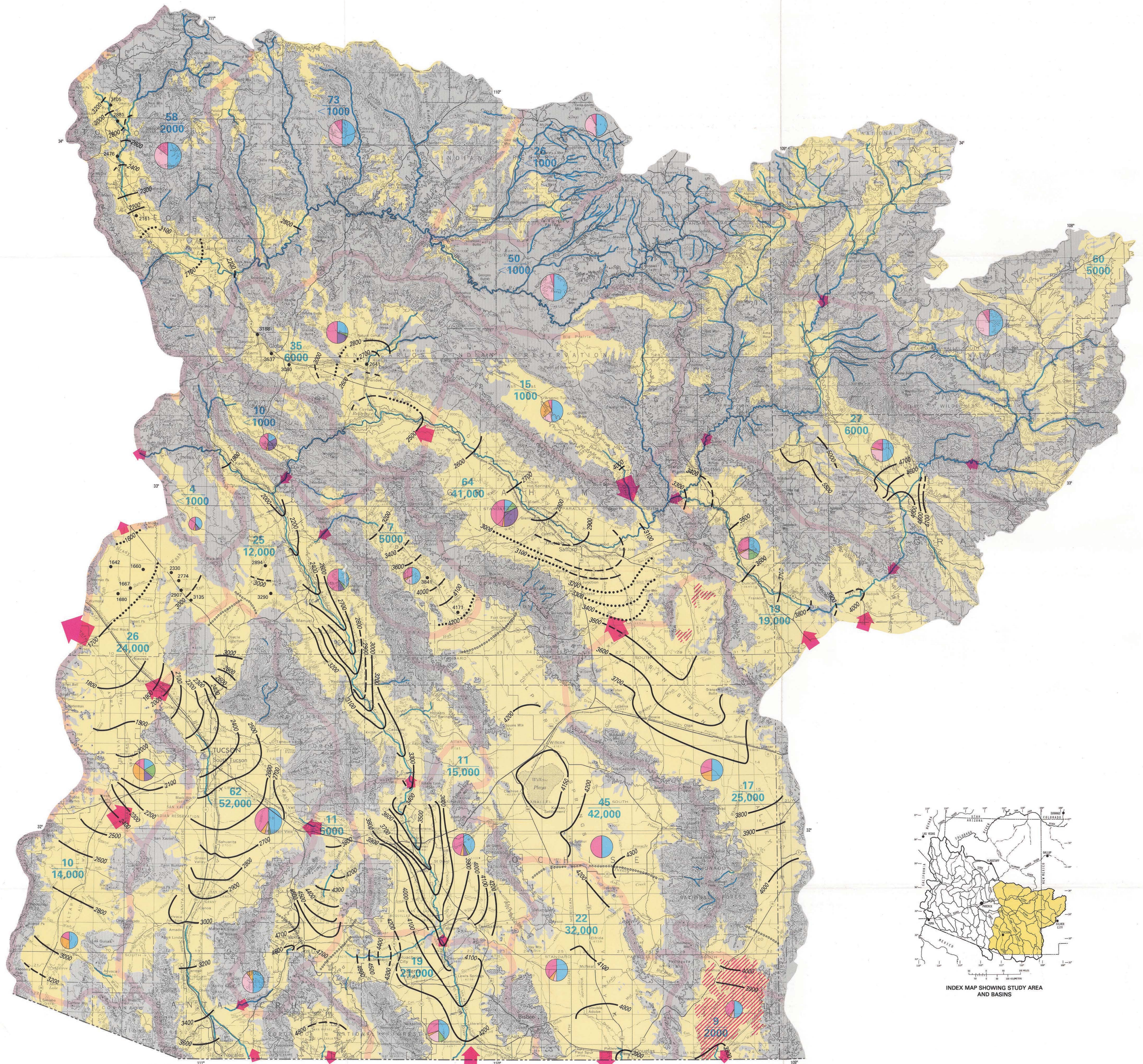
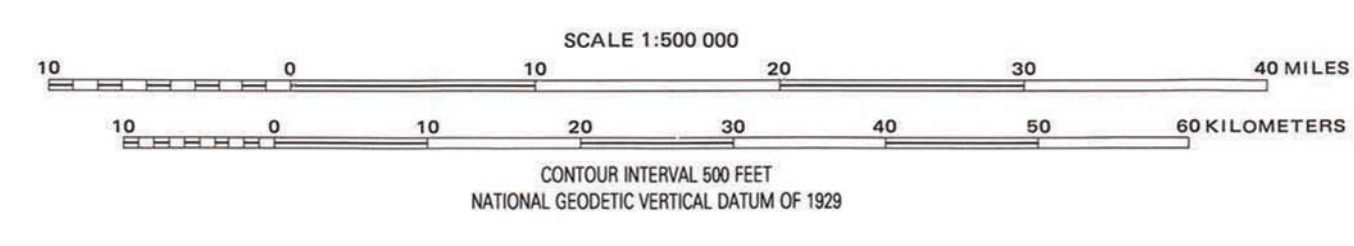
PERENNIAL STREAM

BOUNDARY OF GROUND-WATER BASIN

CONVERSION FACTORS

For readers who prefer to use metric units, the conversion factors for the terms used in this report are listed below:

Multiply	By	To obtain
inch (in.)	25.4	millimeter (mm)
foot (ft)	0.3048	meter (m)
square mile (mi <sup>2</sup> )	2.579	square kilometer (km <sup>2</sup> )
acre-foot (acre-ft)	0.001233	cubic hectometer (hm <sup>3</sup> )



PREDEVELOPMENT HYDROLOGIC CONDITIONS IN THE ALLUVIAL BASINS OF ARIZONA AND ADJACENT PARTS OF CALIFORNIA AND NEW MEXICO  
By  
Geoffrey W. Freethy and T. W. Anderson  
1986

U.S. GEOLOGICAL SURVEY RESTON, VA 20192

For sale by the Branch of Distribution, U.S. Geological Survey, Box 2428, Federal Center, Denver, CO 80225